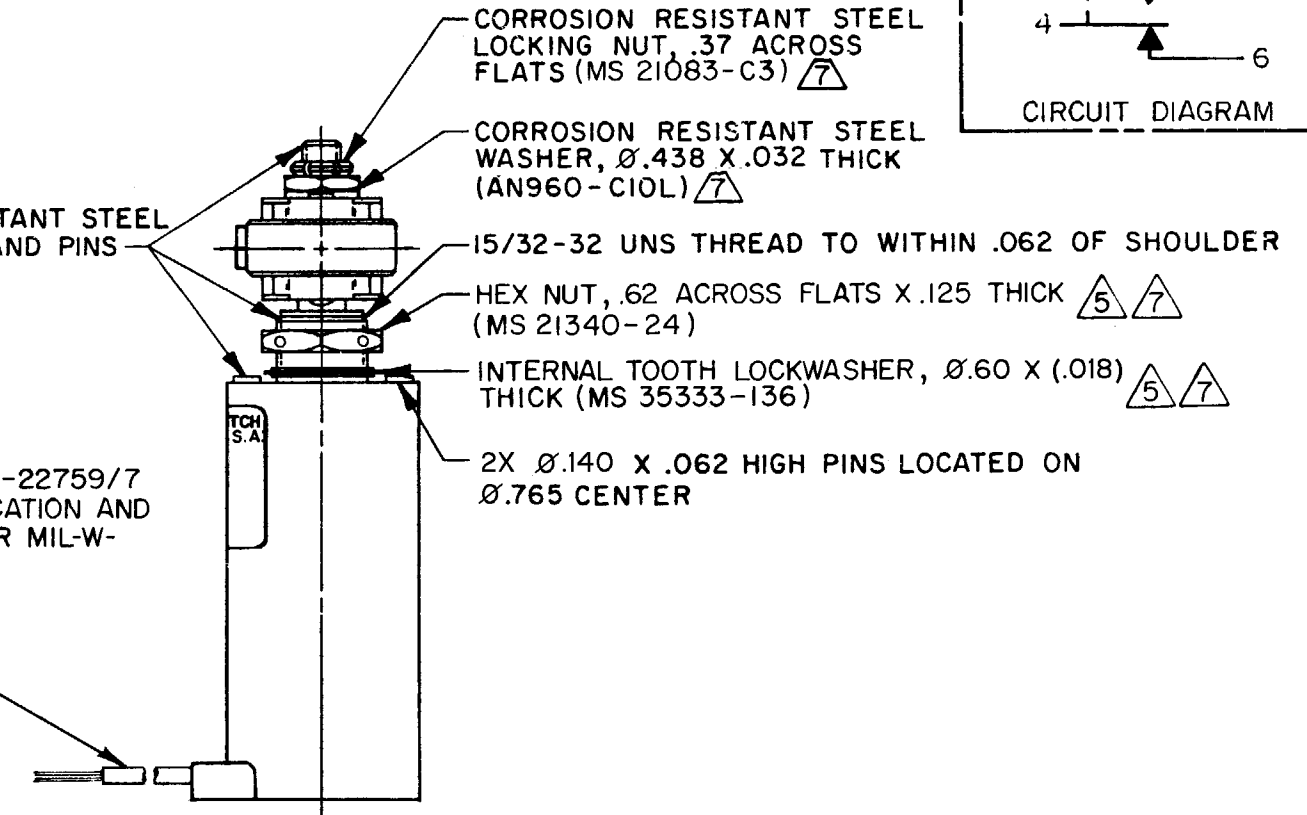
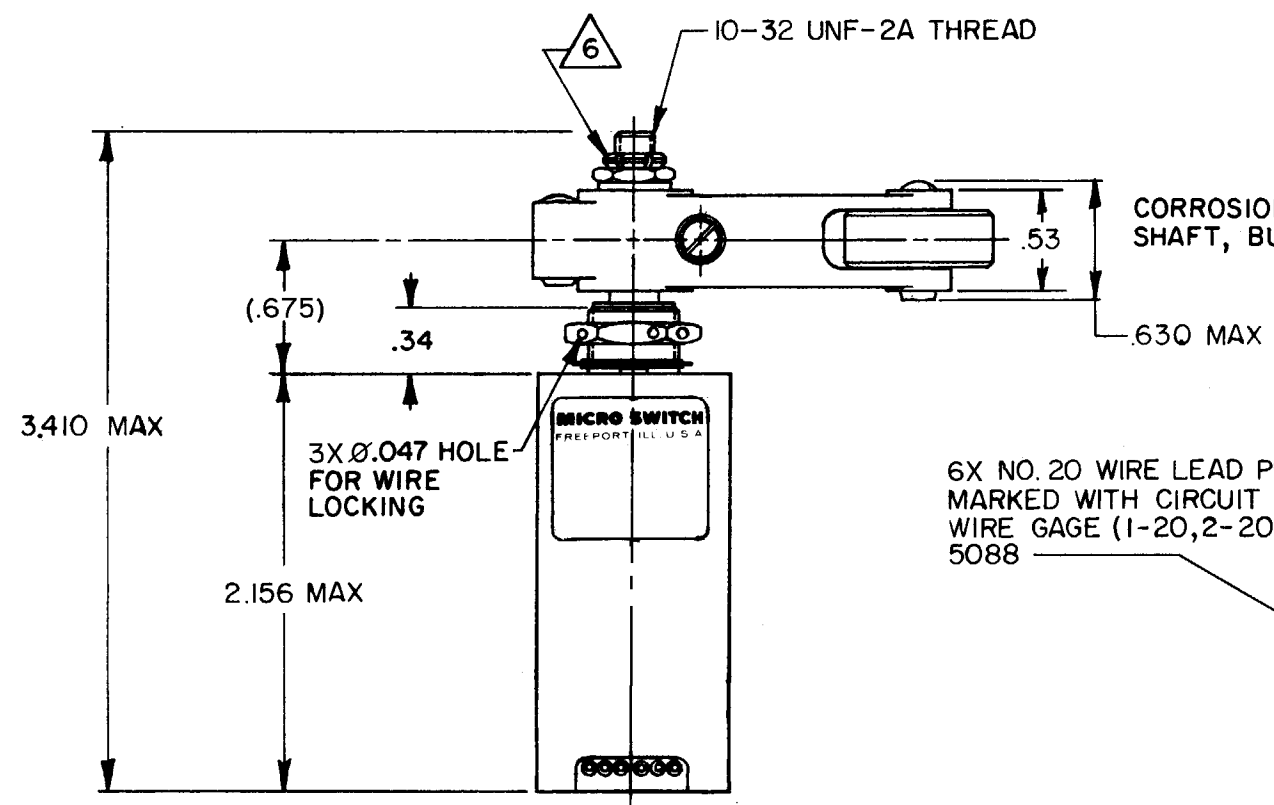
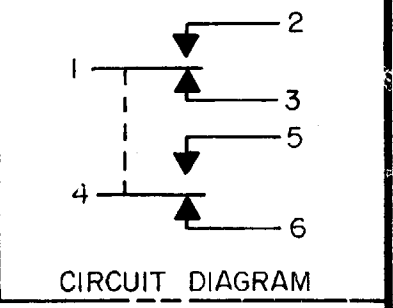
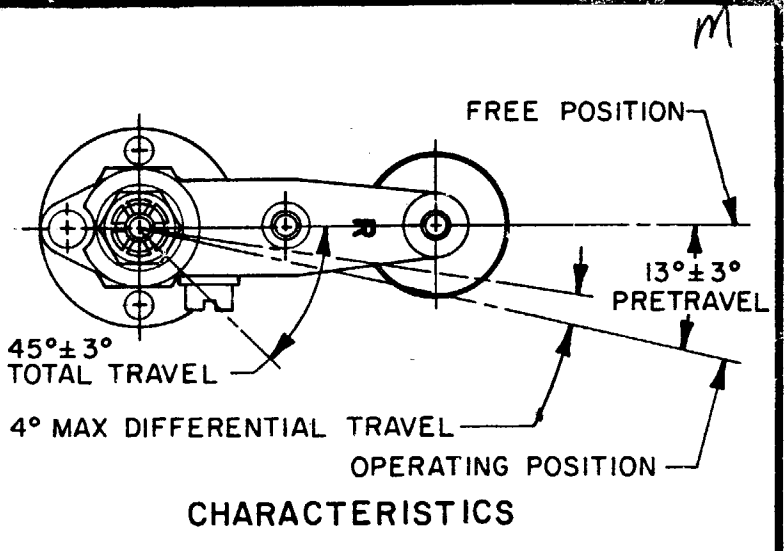
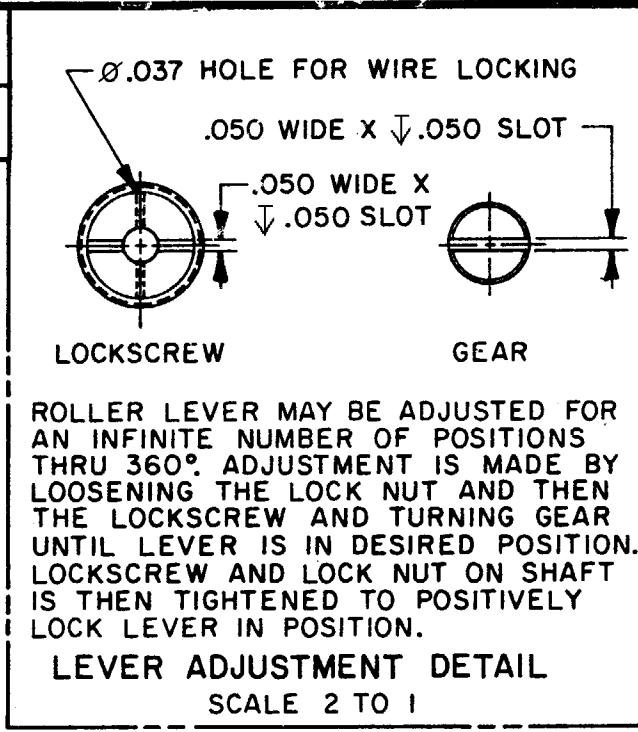
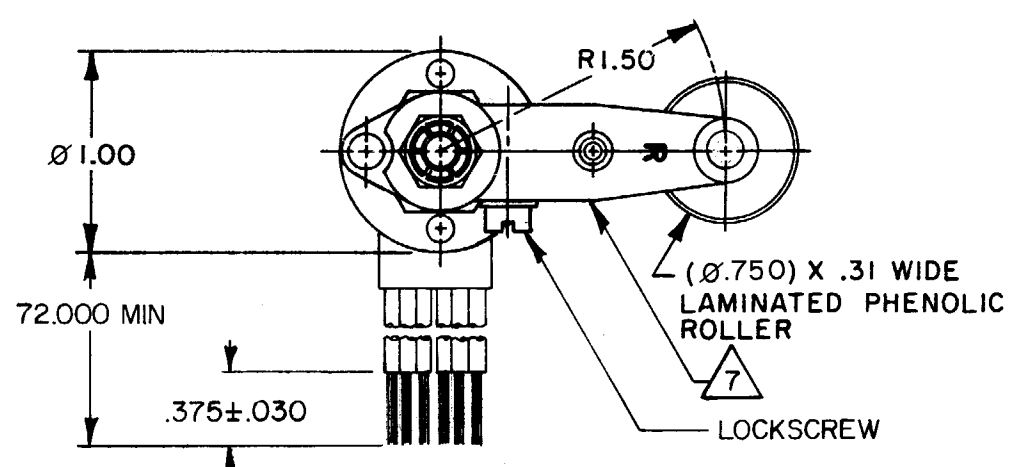


MICRO SWITCH
 FREEPORT, ILLINOIS, U.S.A.
 A DIVISION OF HONEYWELL
 FED. MFG. CODE 91928

SWITCH-ENCLOSED

CATALOG LISTING
31EN94-6

CATALOG LISTING
 31EN94-6
 PAGE 1 OF 1
 ISSUE 6
 REVISIONS
 A PR-14628
 T A D
 5 APR 86
 B C061895
 WJK
 24 JULY 87
 C C073639
 8 OCT 92
 D C075787-C
 DAW
 11 MAY 94
 E C093101
 JAS
 26 MAY 98
 FORMTEK
 DRAWN
 TAD 3 APR 86
 CHECK KAG
 9 APR 86
 CHECK GLL
 9 APR 86
 REPLACES
 PR-14628



ANSI Y14.5M-1982 APPLIES

THIS DRAWING COVERS A PROPRIETARY ITEM AND IS THE PROPERTY OF MICRO SWITCH, A DIVISION OF HONEYWELL. THIS DRAWING IS NOT TO BE COPIED OR USED WITHOUT THE APPROVAL OF MICRO SWITCH.

CHARACTERISTICS	
OPERATING TORQUE	12-25 IN LB
RELEASE TORQUE	9 IN LB MIN
PRETRAVEL	SEE DETAIL
DIFFERENTIAL TRAVEL	
OVERTRAVEL	
FREE POSITION	

ELECTRICAL DATA		
CONTACT ARRANGEMENT		
2X S P D T		
28 VDC		
LOAD	SEA LEVEL	50,000 FT.
RES	5	5
IND	3	2
MOTOR	4	
LAMP		

SCALE FULL			
DO NOT SCALE PRINT			
TOLERANCES			
APPLY TO DIMEN UNITS. CONVERSIONS ARE ONLY FOR REFERENCE. UNLESS NOTED, TOLERANCES ARE 2			
NO PLACES	DIM. mm	TOL. mm/in	NO. PLACES
ONE PLACE	X	1/64	X
TWO PLACES	X,X	0.001/0.015	X,X
THREE PLACES	X,X,X	0.0001/0.002	X,X,X
ANGLES			
SI METRIC		US CUSTOMARY	
DESIGN UNITS		THIRD ANGLE PROJECTION	
WEIGHT 9.5 OZ MAX			

- NOTES
- SWITCH SEALED PER MIL-S-8805 SYMBOL 4
 - CIRCUIT DIAGRAM, AND CATALOG LISTING ARE SHOWN ON NAMEPLATE
 - CORROSION RESISTANT STEEL ENCLOSURE
 - TOTAL TRAVEL OF ROLLER LEVER IS 45° ± 3° IN CLOCKWISE DIRECTION ONLY WITH SPRING RETURN TO NEUTRAL
 - REPLACEMENT MOUNTING HARDWARE - PACKET 19PA10
 - DO NOT APPLY MORE THAN 20-25 INCH POUNDS OF TORQUE WHEN TIGHTENING LOCKING NUT
 - HARDWARE MAY BE PACKAGED UNASSEMBLED PER MIL-S-8805
 - REPLACEMENT LEVER 6PA356-EN