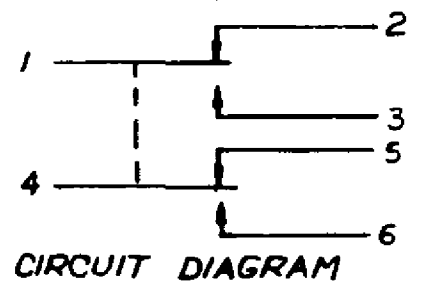


MICRO SWITCH
a Honeywell Division

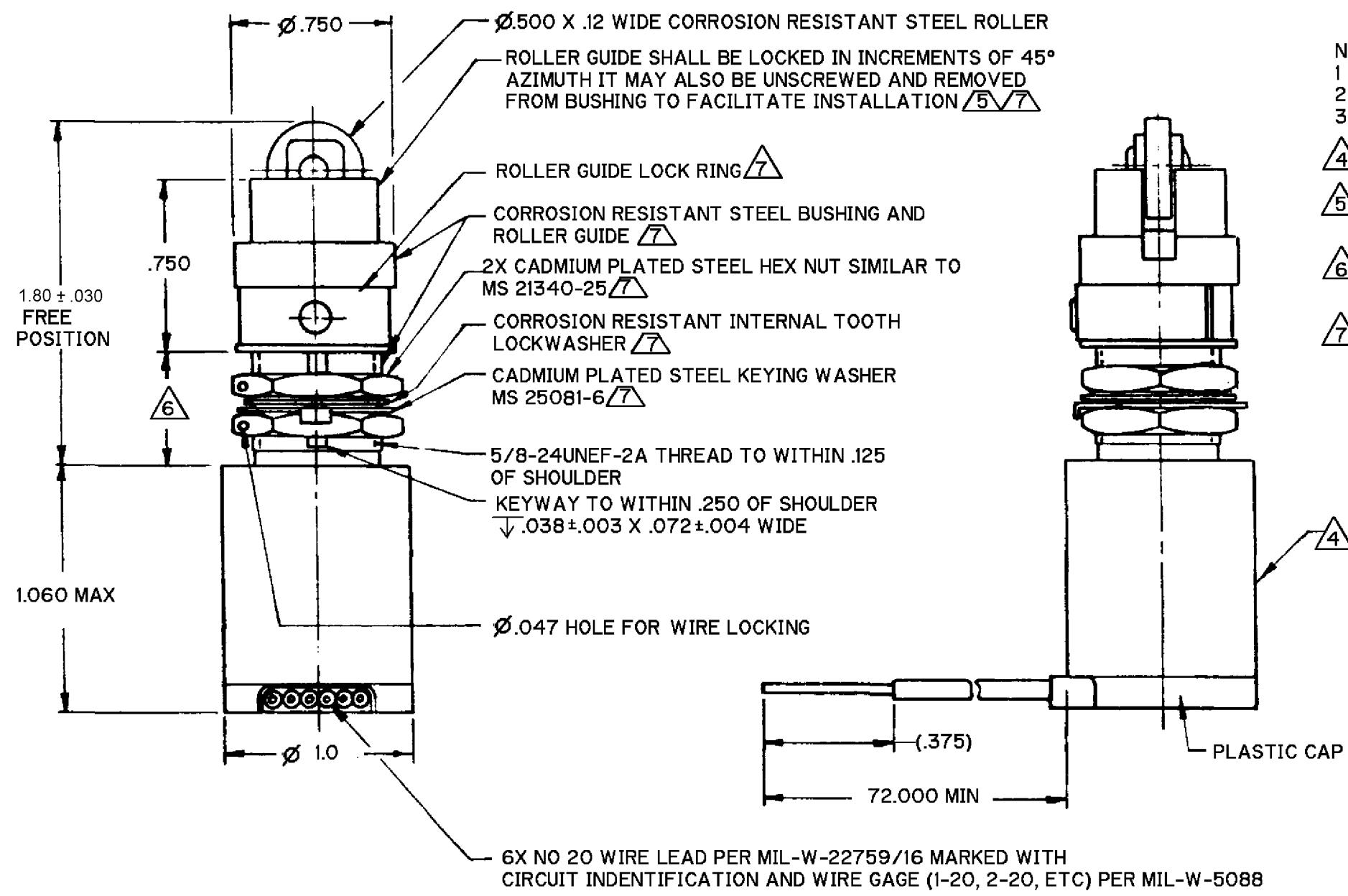
FED. MFG. CODE 91829

SWITCH - ENCLOSED

CATALOG LISTING
ML-1172



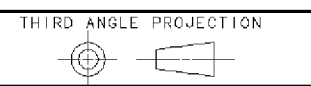
CATALOG LISTING
ML-1172
PAGE 1 OF 1
REPLACES
PR-24161
RELEASE NO.
05AUG08
CMH
05AUG08
CHECK
21 DEC 05
21 DEC 05
MBH
04AUG08
VA
CHECK
28 SEP 99
28 SEP 99
SAV
CHECK
28 SEP 99
28 SEP 99
JJA
DRAWN
RASTER



- NOTES**
- 1 - CORROSION RESISTANT STEEL ENCLOSURE
 - 2 - SWITCH SEALED PER MIL-PRF-8805, SYMBOL 4
 - 3 - COINCIDENCE OF OPERATING AND RELEASING POINTS: $.010$ OF PLUNGER TRAVEL
 - $\triangle 4$ PRINT CIRCUIT DIAGRAM, CATALOG LISTING, AND DATE CODE ON NAMEPLATE
 - $\triangle 5$ TO ADJUST ROLLER GUIDE: REMOVE LOCK RING, SCREW GUIDE DOWN AS FAR AS POSSIBLE, THEN UNSCREW GUIDE TO THE DESIRED DIRECTION IN 45° INCREMENTS, THEN REPLACE THE LOCK RING
 - $\triangle 6$ ROLLER CAN BE ADJUSTED TO EACH POSSIBLE DIRECTION WITH A ROLLER GUIDE LOCATION OF $.657 \pm .030$ AND STILL HAVE $.250$ MINIMUM OVERTRAVEL
 - $\triangle 7$ HARDWARE MAY BE PACKAGED UNASSEMBLED PER MIL-PRF-8805

ANSI Y14.5M-1982 APPLIES

THIS DRAWING COVERS A PROPRIETARY ITEM AND IS THE PROPERTY OF MICRO SWITCH, A DIVISION OF HONEYWELL. THIS DRAWING IS NOT TO BE COPIED OR USED WITHOUT THE APPROVAL OF MICRO SWITCH



CHARACTERISTICS		ELECTRICAL DATA		SCALE	
OPERATING FORCE -----	6 - 12 LBS	CONTACT ARRANGEMENT		NONE	
FULL OVERTRAVEL FORCE -----	30 LBS MAX	2X S P D T		DO NOT SCALE PRINT	
RELEASE FORCE -----	4 LBS MIN	28 VDC		UNLESS OTHERWISE SPECIFIED TOLERANCES ARE	
PRETRAVEL -----	.040 MAX	LOAD	SEA LEVEL		ONE PLACE (.0) $\pm .030$
DIFFERENTIAL TRAVEL -----	.020 MAX	RESISTIVE	50,000 FT		TWO PLACE (.00) $\pm .015$
OVERTRAVEL -----	.250 MIN	INDUCTIVE			THREE PLACE (.000) $\pm .005$
		MOTOR		ANGLES \pm	
				WEIGHT	