

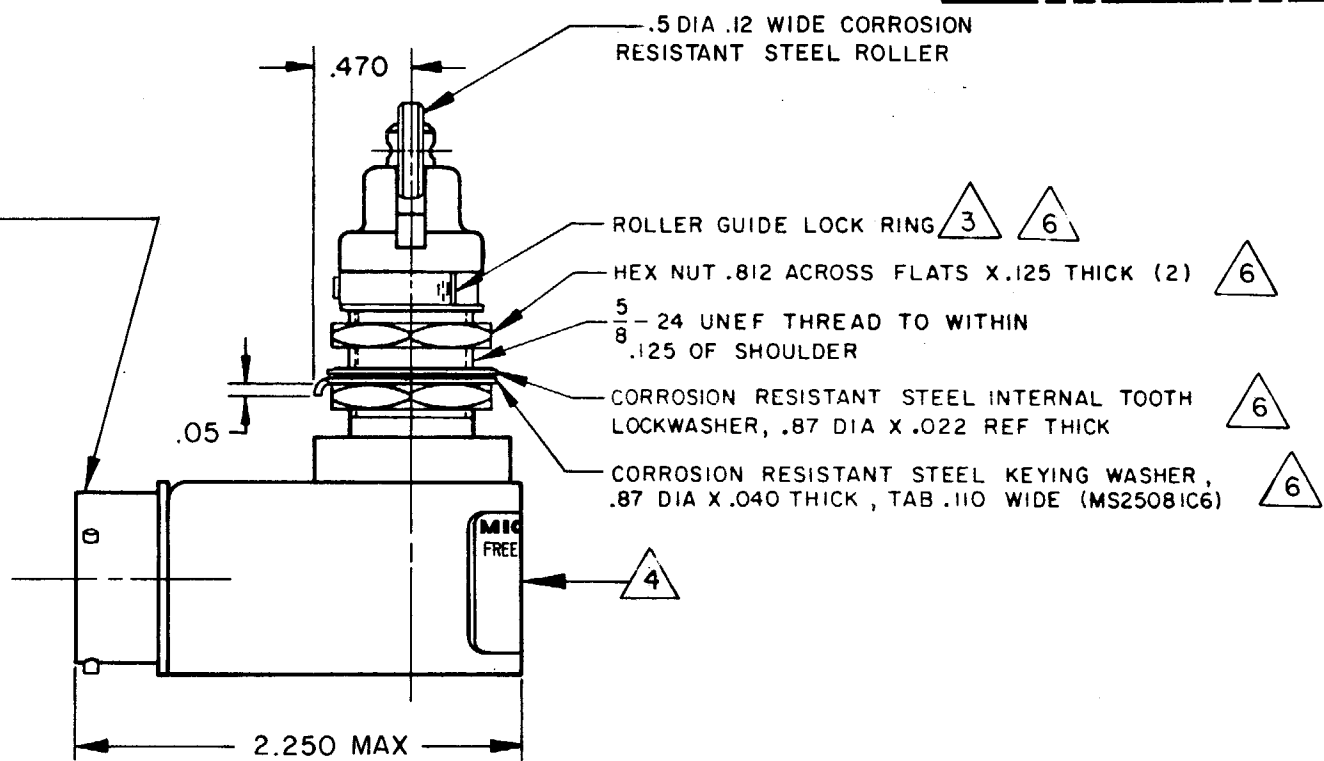
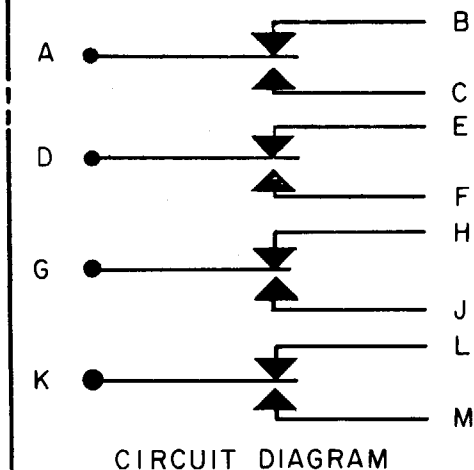
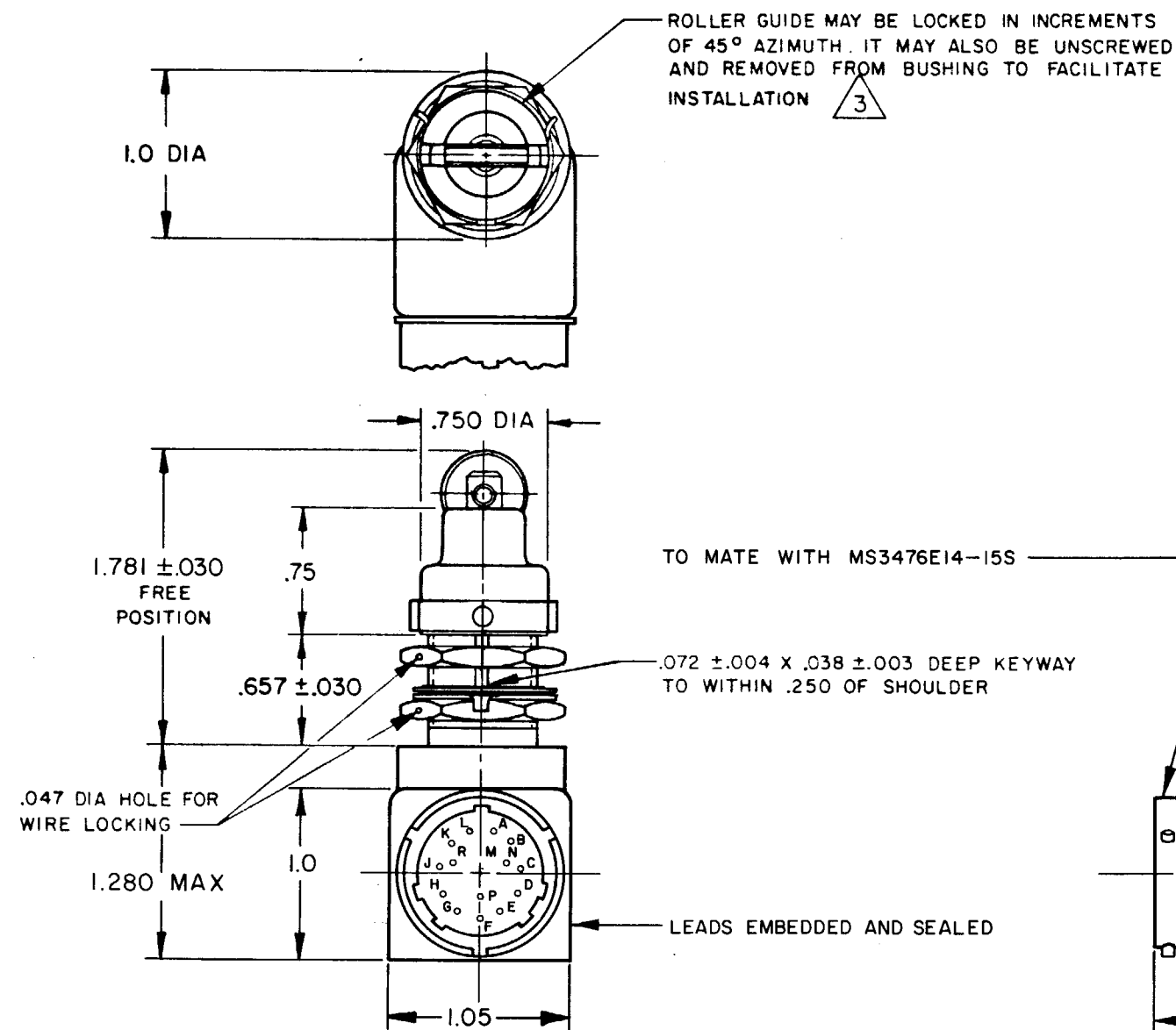
MICRO SWITCH
 FREEPORT ILLINOIS U.S.A.
 A DIVISION OF HONEYWELL
 FED. MFG. CODE 91929

SWITCH-ENCLOSED

CATALOG LISTING
424HE23-R

THIS DRAWING COVERS A PROPRIETARY ITEM AND IS THE PROPERTY OF MICRO SWITCH A DIVISION OF HONEYWELL THIS DRAWING IS NOT TO BE COPIED OR USED WITHOUT THE APPROVAL OF MICRO SWITCH.

424HE23-R
 M
 DRAWING NUMBER
 ISSUE
 REVISIONS
 A PR-4136-T
 24 JUNE 74
 B CO 34007
 24 JUL 74
 C CO 35834
 22 JUL 75
 D CO35858
 26 AUG 75
 E CO 44351
 28 NOV 78
 F CO47578
 16 JULY 80
 G CO48456
 10 OCT 80
 H CO48605
 18 MAR 81
 J CO68501
 7 DEC 90
 FO-52851
 DRAWN
 J A L 24 JUNE 74
 CHECK
 DAW
 12 JUL 74
 CHECK
 EVK
 3 JULY 74
 CHECK
 PR-4136-T
 REPLACES



NOTES

- 1 - CORROSIVE RESISTANT STEEL ENCLOSURE
- 2 - SWITCH SEALED PER MIL-S-8805 SYMBOL 5
- $\triangle 3$ - TO ADJUST ROLLER DIRECTION, REMOVE ROLLER GUIDE LOCKRING, SCREW ROLLER GUIDE DOWN AS FAR AS POSSIBLE, THEN UNSCREW TO DESIRED DIRECTION SECURE BY REPLACING ROLLER GUIDE LOCKRING
- $\triangle 4$ - CIRCUIT DIAGRAM AND CATALOG LISTING ARE SHOWN ON NAMEPLATE
- 5 - COINCIDENCE OF OPERATING AND RELEASING POINTS: .010 INCH OF PLUNGER TRAVEL
- $\triangle 6$ - HARDWARE MAY BE PACKAGED UNASSEMBLED PER MIL-S-8805

CHARACTERISTICS		ELECTRICAL DATA		SCALE FULL	
OPERATING FORCE	6-12 LB	CONTACT ARRANGEMENT		DO NOT SCALE PRINT	
FULL OVERTRAVEL FORCE	30 LB MAX	S P D T (4)		UNLESS OTHERWISE NOTED	
RELEASE FORCE	4 LB MIN	28 VDC		DIMENSIONS ARE IN INCHES	
PRETRAVEL	.040 MAX	LOAD	SEA LEVEL	TOLERANCES ARE:	
DIFFERENTIAL TRAVEL	.020 MAX	RES	100,000 FT.	ONE PLACE	± .030
OVERTRAVEL	.250 MIN	IND	1.5	TWO PLACE	± .015
			3	THREE PLACE	± .005
			1.5	ANGLES	± .005
				WEIGHT	