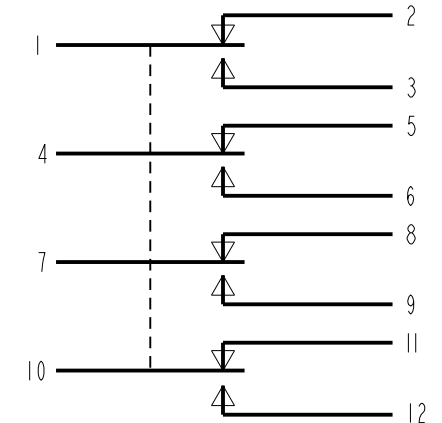


MICROSWITCH
a Honeywell Division

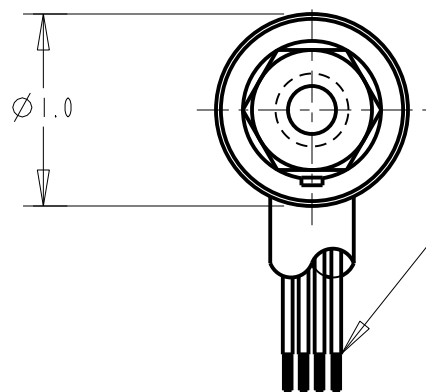
SWITCH - ENCLOSED

CATALOG LISTING
604HE161
6632303001-001

FED. MFG. CODE 91929



CIRCUIT DIAGRAM



12X NO 22 WIRE LEAD PER MIL-W-22759/11-22 WITH IDENTIFICATION AND WIRE GAGE (1-22, 2-22, ETC) PER MIL-W-5088

6X Ø.047 HOLE FOR WIRE LOCKING

.875 ± .030 FREE POSITION

.725 ± .030

1.500 MAX

.072 ± 004 WIDE - .031 ± 003 DEEP KEYWAY TO WITHIN .250 OF SHOULDER

HEAT MELTABLE TAPE

D38999/26FB35PB 8

CONDUIT ADAPTER 10

HEAT SHRINK BOOT

HEAT SHRINK TUBING

IRRADIATED ETFE CONDUIT

12.000 MIN

CORROSION RESISTANT STEEL PLUNGER

15/32-32 UNS-2A THREAD TO WITHIN .093 OF SHOULDER

2X HEX NUT .62 ACROSS FLATS X .125 THICK (MS 21340-24) 5 7

INTERNAL TOOTH LOCKWASHER Ø.60 X (.018) THICK (MS 35333-136) 5 7

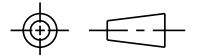
CORROSION RESISTANT STEEL KEYING WASHER Ø.72 X .040 THICK, TAB .110 WIDE (MS 25081C4) 5 7

NOTES

- 1 - CORROSION RESISTANT STEEL ENCLOSURE
- 2 - SWITCH SEALED PER MIL-PRF-8805 SYMBOL 5
- 3 - COINCIDENCE OF OPERATING AND RELEASE POINTS: .010 INCH OF PLUNGER TRAVEL
- 4 - CIRCUIT DIAGRAM, CATALOG LISTING, DATE CODES, FED. MFG. CODES AND CUST. P/N ARE SHOWN ON NAMEPLATE
- 5 - REPLACEMENT MOUNTING HARDWARE - PACKET 19PA9
- 6 - OPERATION IN TEMPERATURE RANGE OF -65°F TO +257 °F
- 7 - HARDWARE MAY BE PACKAGED UNASSEMBLED PER MIL-PRF-8805
- 8 - PER MIL-C-38999 THE LETTER(S) 'J' OR 'JAN' MAY PRECEDE THE PART NUMBER
- 9 - KEYWAY LOCATION SHOWN FOR REFERENCE: MAY BE RECEIVED ROTATED ABOUT ANY POSITION OF CONNECTOR DIAMETER.
- 10 - CONDUIT ADAPTER MAY BE LOOSENED FROM CONNECTOR BODY TO ALLOW PROPER MATING OF PLUG TO RECEPTCLE. AFTER MATING OF PLUG TO RECEPTACLE, CONDUIT ADAPTOR SHOULD BE TORQUED 40-50 IN-LBS

THIS DRAWING COVERS A PROPRIETARY ITEM AND IS THE PROPERTY OF MICRO SWITCH, A DIVISION OF HONEYWELL. THIS DRAWING IS NOT TO BE COPIED OR USED WITHOUT THE APPROVAL OF MICRO SWITCH

THIRD ANGLE PROJECTION



CHARACTERISTICS

OPERATING FORCE —	—	—	5-12 LB
DIFFERENTIAL FORCE—	—	—	30 LB MAX
RELEASE FORCE —	—	—	3 LB MIN
PRETRAVEL —	—	—	.040 MAX
DIFFERENTIAL TRAVEL—	—	—	.020 MAX
OVERTRAVEL —	—	—	.125 MIN

ELECTRICAL DATA

CONTACT ARRANGEMENT	
4X S P D T	
LOAD	28 VDC SEA LEVEL & 100,000 FT
RES	7
IND	4
MOTOR	4

SCALE FULL

DO NOT SCALE PRINT

UNLESS OTHERWISE SPECIFIED TOLERANCES ARE

ONE PLACE (.0) ±.030

TWO PLACE (.00) ±.015

THREE PLACE (.000) ±.005

ANGLES ±

WEIGHT 6 OZ MAX

ANSI Y14.5M-1982 APPLIES

604HE161

CATALOG LISTING

PAGE 1 OF 1

ISSUE 6

REVISIONS

E 0008658

KSR 130CT04

CHECK

130CT04

CHECK

AK

CHECK

130CT04

AK

CHECK

130CT04

AK

CHECK

130CT04

AK

PTC/CAD 2D

DRAWN

REPLACES

RELEASE NO.

CHECK

CHECK

CHECK

CHECK