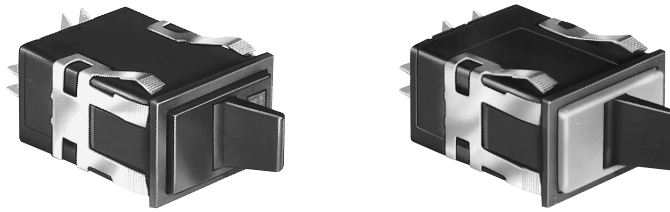


Manual Switches

Power Duty Paddle

AML33/35 Series

INCANDESCENT, NEON, OR NON-LIGHTED DISPLAY

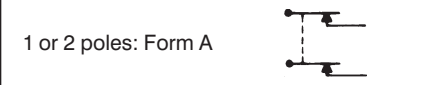


Colored housing covers ordered separately.

| | |
|---------------------|---------|
| Electrical Data | page 19 |
| Paddle Covers | page 47 |
| Lamps | page 58 |
| Mounting Dimensions | page 60 |

- FEATURES**
- Toggle type paddle operators permanently installed in rectangular housings.
 - 2-position maintained action.
 - AML33 lamp circuit independent of switch circuit.
 - UL recognized, CSA certified.

CONTACT ARRANGEMENT



*AML33 Series: 2-pole only.
*AML35 Series: 1-pole and 2-pole.

AML33 ORDER GUIDE

AML33 accepts one incandescent lamp which can be furnished installed or ordered separately.

| AML33 E | B | A | 4 | AA | 01 |
|--|---------------------------------|--|---|---|--|
| Housing Type | Operator/Bezel Color | Incandescent Lamp Type | Terminal Type | Circuitry Codes | Operating Action |
| AML33 E Rectangular Non-Lighted AML33 F Rectangular 1 Lamp Ckt. | B Black/Black | A No Lamp Installed B 6 V Lamp* C 14 V Lamp* E 28 V Lamp* | 4 .187 × .020 (Solder or Quick-Connect) | Silver Contacts: AA 1-Pole (One Form A Single-throw, Normally-Open) AC 2-Pole (Two Form A) | 01 Maint. ON Maint. OFF |

* Lamps will be installed per each lamp circuit specified in the Housing Type.

AML35 ORDER GUIDE

AML35 has neon lamp wired to 125 or 250 VAC resistor.

| AML35 F | B | B | 4 | AA | 01 |
|---|---------------------------------|--|---|--|--|
| Housing Type | Operator/Bezel Color | Neon Lamp Voltage | Terminal Type/Lamp Circuit † | Circuitry Codes | Operating Action |
| AML35 F Rectangular 1 Neon Lamp | B Black/Black | Red B 125 VAC C 250 VAC Green M 125 VAC P 250 VAC | 4 .187 × .020 (Solder or Quick-Connect) With Isolated Lamp Circuit 7 .187 × .020 With Integral Lamp Circuit (Available with 2-Pole devices only) | Silver Contacts: AA (One Form A Single-Throw) Available only with isolated lamp circuit, term. type 4. AC 2-Pole (Two Form A) | 01 Maint. ON Maint. OFF |

† The "MICRO SWITCH" identification is shown on this side of the switch housing.

Example: **AML35FBB4AA01**
Rectangular paddle switch housing; black paddle and bezel; 125 VAC neon lamp; .187 × .020 terminals with isolated lamp circuit; 1-Pole Form A Single-Throw; with circuit ON in one extreme position and OFF in the other (maintained).