

ZT

Immersion wells

for thermostats and temperature transmitters

Type	Immersion depth L ₁ (mm)	Overall length L ₂ (mm)	Suitable for
------	--	---------------------------------------	--------------

Nickel-plated brass, G 1/2", permitted pressure 25 bar

R1/Ms	135	151	TAM...
R2/Ms	220	236	
R3/Ms	500	516	
R10/Ms	135	151	TX.../TP
R20/Ms	220	236	

Stainless steel (1.4571 + 1.4401) G 1/2", permitted pressure 63 bar

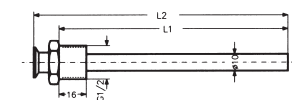
R1/Nst	135	151	TAM...
R2/Nst	220	236	
R10/Nst	135	151	TX.../TP
R20/Nst	220	236	

Nickel-plated brass, 1/2" NPT, permitted pressure 25 bar

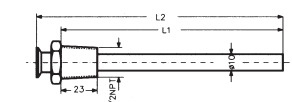
RN1/Ms	135	151	TAM...
RN2/Ms	220	236	
RN10/Ms	135	151	TX.../TP
RN20/Ms	220	236	

Stainless steel (1.4571 + 1.4401) 1/2" NPT, permitted pressure 63 bar

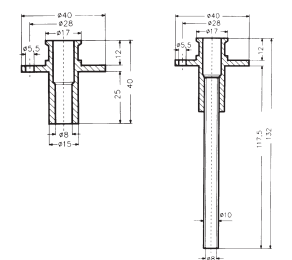
RN1/Nst	135	151	TAM...
RN2/Nst	220	236	
RN10/Nst	135	151	TX...
RN20/Nst	220	236	



Immersion wells G 1/2"



Immersion wells 1/2" NPT



R6

R7

Immersion wells with fixing flange for air ducts

Type	Immersion depth of sensor	Suitable for
------	---------------------------	--------------

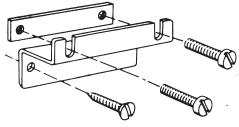
Material: chromated steel

R6	135 mm	TX...
R7	220 mm	

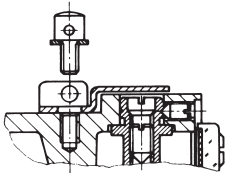
Immersion wells (screw-in thread G1/2")

Type	Immersion depth (mm)	Connection	Max. perm. press. (bar)
G12-100	100	G1/2"	100
G12-150	150	G1/2"	100
G12-200	200	G1/2"	100
G12-250	250	G1/2"	100
R12-100	100	R1/2"	100
R12-150	150	R1/2"	100
R12-200	200	R1/2"	100
R12-250	250	R1/2"	100
N12-100	100	1/2" NPT	100
N12-150	150	1/2" NPT	100
N12-200	200	1/2" NPT	100
N12-250	250	1/2" NPT	100

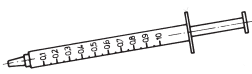
for thermostats and pressure monitors



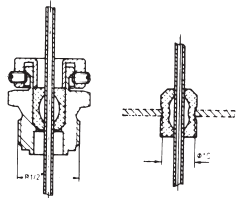
H1



P2

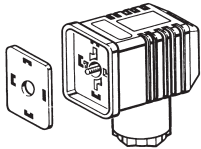


WLP1



R4

R5



ST5



ST218

Type

H1 Wall bracket

including fixing screws and plugs (6 mm Ø); included as standard with TRM type thermostats. Suitable for all switching devices of the 200 and 300 series.

P2 Sealing device

consisting of cover plate and capstan screw for covering and sealing the adjusting screws. Only suitable for switching device 200 (plug connection)

WLP1 Heat conducting compound

to improve the transfer of heat, e.g. for strap-on thermostats. Approx. 1.5 cm³ in handy dispenser.

R4 Capillary tube bushing

for 3 mm capillary tube (not pressure-tight). Screw-in thread G 1/2". Suitable for all TAM.

R5 Capillary tube bushing

Rubber plug for 3 mm capillary tube. Bore diameter 10 mm. Not pressure-tight (5 off packed in bag). Suitable for all TAM.

ST5 Replacement plug to DIN ISO 4400

for 200 series switching devices, with seal and fastening screw, 3-pin + earth contact

ST218 Plug connector with position indication via LEDs

Operating voltage: 12–240 V AC/DC

Operating current: max. 2 A

LED current consumption: max. 10 mA

LED indication: green, if voltage present at contact pin 1;
red, if voltage present at contact pin 3

Plug rotates through 270 °, engaging at 45 ° intervals

Connection cables: 1.5 mm² (finely stranded)

Protection class: IP 65

Ambient temperature: 0–60 °C

Suitable for 200 series pressure and temperature switches

(plug connection) which are equipped with a microswitch (standard version).