

# ZT

## Immersion wells

for thermostats and temperature transmitters

Type	Immersion depth L <sub>1</sub> (mm)	Overall length L <sub>2</sub> (mm)	Suitable for
------	--	---------------------------------------	--------------

Nickel-plated brass, G 1/2", permitted pressure 25 bar

R1/Ms	135	151	TAM...
R2/Ms	220	236	
R3/Ms	500	516	
R10/Ms	135	151	TX.../TP
R20/Ms	220	236	

Stainless steel (1.4571 + 1.4401) G 1/2", permitted pressure 63 bar

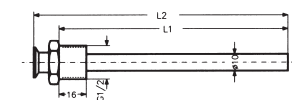
R1/Nst	135	151	TAM...
R2/Nst	220	236	
R10/Nst	135	151	TX.../TP
R20/Nst	220	236	

Nickel-plated brass, 1/2" NPT, permitted pressure 25 bar

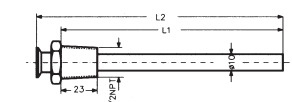
RN1/Ms	135	151	TAM...
RN2/Ms	220	236	
RN10/Ms	135	151	TX.../TP
RN20/Ms	220	236	

Stainless steel (1.4571 + 1.4401) 1/2" NPT, permitted pressure 63 bar

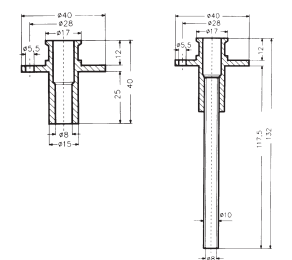
RN1/Nst	135	151	TAM...
RN2/Nst	220	236	
RN10/Nst	135	151	TX...
RN20/Nst	220	236	



Immersion wells G 1/2"



Immersion wells 1/2" NPT



R6

R7

Immersion wells with fixing flange for air ducts

Type	Immersion depth of sensor	Suitable for
------	---------------------------	--------------

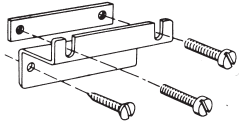
Material: chromated steel

R6	135 mm	TX...
R7	220 mm	

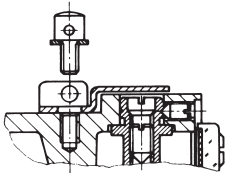
Immersion wells (screw-in thread G1/2")

Type	Immersion depth (mm)	Connection	Max. perm. press. (bar)
G12-100	100	G1/2"	100
G12-150	150	G1/2"	100
G12-200	200	G1/2"	100
G12-250	250	G1/2"	100
R12-100	100	R1/2"	100
R12-150	150	R1/2"	100
R12-200	200	R1/2"	100
R12-250	250	R1/2"	100
N12-100	100	1/2" NPT	100
N12-150	150	1/2" NPT	100
N12-200	200	1/2" NPT	100
N12-250	250	1/2" NPT	100

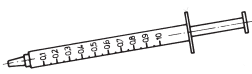
## for thermostats and pressure monitors



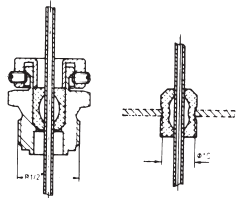
H1



P2

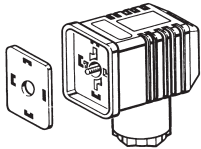


WLP1



R4

R5



ST5



ST218

### Type

#### H1 Wall bracket

including fixing screws and plugs (6 mm Ø); included as standard with TRM type thermostats. Suitable for all switching devices of the 200 and 300 series.

#### P2 Sealing device

consisting of cover plate and capstan screw for covering and sealing the adjusting screws. Only suitable for switching device 200 (plug connection)

#### WLP1 Heat conducting compound

to improve the transfer of heat, e.g. for strap-on thermostats. Approx. 1.5 cm<sup>3</sup> in handy dispenser.

#### R4 Capillary tube bushing

for 3 mm capillary tube (not pressure-tight). Screw-in thread G 1/2". Suitable for all TAM.

#### R5 Capillary tube bushing

Rubber plug for 3 mm capillary tube. Bore diameter 10 mm. Not pressure-tight (5 off packed in bag). Suitable for all TAM.

#### ST5 Replacement plug to DIN ISO 4400

for 200 series switching devices, with seal and fastening screw, 3-pin + earth contact

#### ST218 Plug connector with position indication via LEDs

Operating voltage: 12–240 V AC/DC

Operating current: max. 2 A

LED current consumption: max. 10 mA

LED indication: green, if voltage present at contact pin 1;  
red, if voltage present at contact pin 3

Plug rotates through 270 °, engaging at 45 ° intervals

Connection cables: 1.5 mm<sup>2</sup> (finely stranded)

Protection class: IP 65

Ambient temperature: 0–60 °C

Suitable for 200 series pressure and temperature switches

(plug connection) which are equipped with a microswitch (standard version).