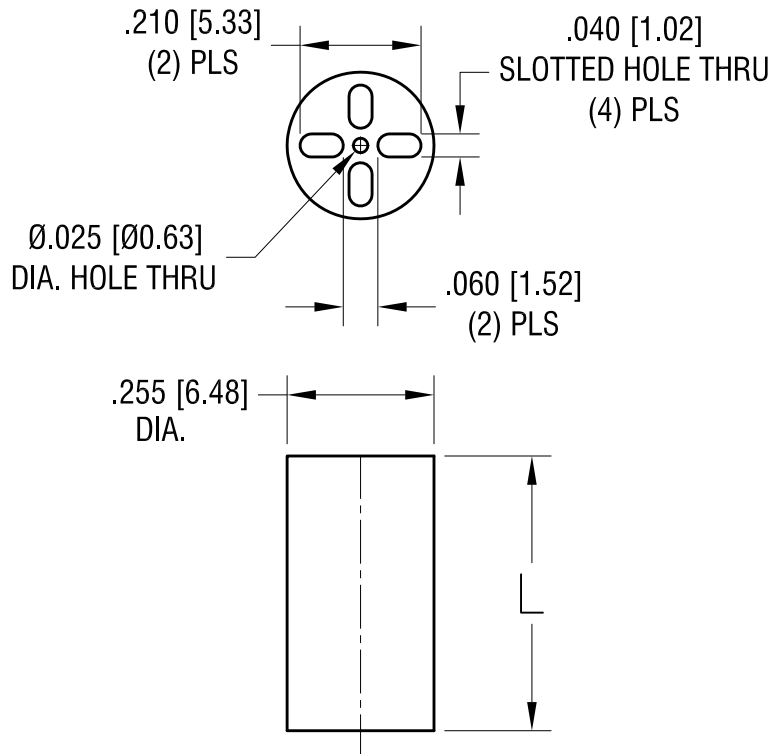


THIS DOCUMENT IS THE PROPERTY OF
KEYSTONE ELECTRONICS CORP. AND
SHALL NOT BE REPRODUCED, DISTRIBUTED
OR USED AS A BASIS FOR MANUFACTURE
WITHOUT PRIOR WRITTEN PERMISSION
FROM KEYSTONE ELECTRONICS CORP.



PART NO.	'L' DIM.
8916	.400 [10.16]
8917	.420 [10.66]
8918	.440 [11.17]
8919	.450 [11.43]
8920	.460 [11.68]
8921	.480 [12.19]
8922	.500 [12.70]
8923	.550 [13.97]
8924	.600 [15.24]
8925	.650 [16.51]
8926	.700 [17.78]
8927	.750 [19.05]
8928	.800 [20.32]
8929	.850 [21.59]
8930	.900 [22.86]
8931	.925 [23.49]

DATE	DESCRIPTION	REV.
5.26.11	CHANGE AS PER ECN 11-070	C
6.30.00	CHANGE AS PER ECN 00-059	B
4.6.98	CHANGE AS PER ECR 98-024	A

KEYSTONE ELECTRONICS CORP.
www.keyelco.com • ASTORIA, N.Y. 11105-2017 • Tel (718) 956-8900

PART NAME		LED SPACER MOUNT	
MATERIAL		PVC UL 94V-0	
FINISH	-	DRN BY	BOONE
		DATE	3.30.95
		APP'D	LN
		SCALE	3X
TOLERANCES	INCH [MM]	CODE	DWG NO.
DECIMAL	± .005 [± 0.15]	C/M	8916-8931
ANGULAR	± 1°		
UNLESS OTHERWISE SPECIFIED			