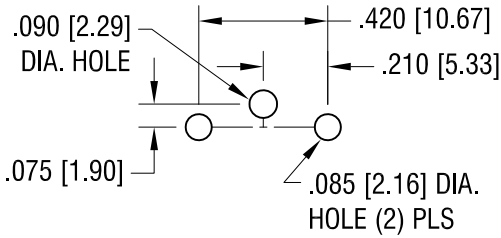
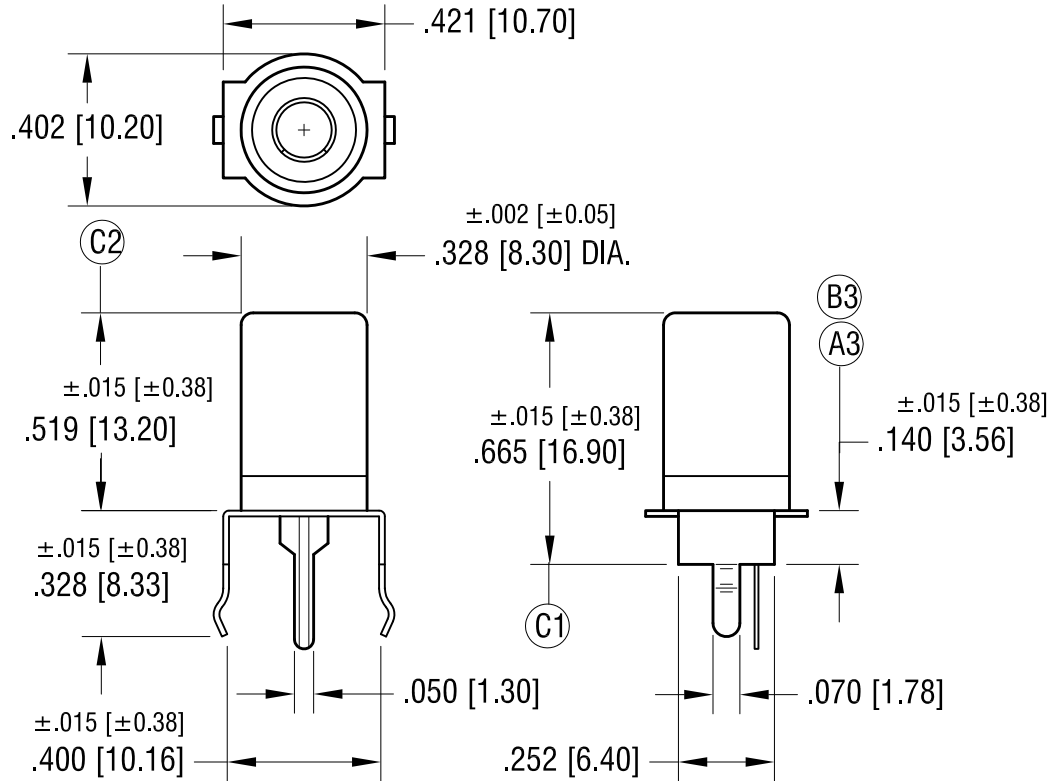
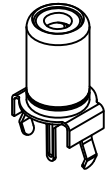


THIS DOCUMENT IS THE PROPERTY OF KEYSTONE ELECTRONICS CORP. AND SHALL NOT BE REPRODUCED, DISTRIBUTED OR USED AS A BASIS FOR MANUFACTURE WITHOUT PRIOR WRITTEN PERMISSION FROM KEYSTONE ELECTRONICS CORP.

MOUNTING DETAIL



ACTUAL SIZE



NOTES:

- 1. SHELL: MAT'L - STEEL
FINISH: - NICKEL PLATE
- CONTACT: MAT'L - BRASS
FINISH: - TIN PLATE

| PART NO. | INSULATOR COLOR |
|----------|-----------------|
| 584 | WHITE |
| 585 | BLACK |
| 586 | YELLOW |

| DATE | DESCRIPTION | REV. |
|----------|--|------|
| 5.07.15 | ADD C1, C2 ELIMINATE OVERALL DIMENSION CHANGE AS PER ECN 15-048 | C |
| 3.19.15 | B1 WAS .910, B2 WAS .967 B3 WAS .152 ELIMINATE ALL CHANGES PER REV.A CHANGE AS PER ECN 15-031 | B |
| 12.24.14 | A1 WAS .843, A2 WAS .875 A3 WAS .140 CHANGE AS PER ECN 14-128 | A |

KEYSTONE ELECTRONICS CORP.
www.keyelco.com • ASTORIA, N.Y. 11105-2017 • Tel (718) 956-8900

PART NAME: **SNAP-FIT VERTICAL PC PHONO JACK**

MATERIAL: **AS NOTED**

FINISH: **TIN PLATE**

DRN BY: **BOONE** DATE: **8.10.06**

APP'D: **LN** SCALE: **2X**

TOLERANCES INCH [MM]
DECIMAL ± .005 [± 0.13]
ANGULAR ± 1°
UNLESS OTHERWISE SPECIFIED

CODE: **C** DWG NO.: **584-586**