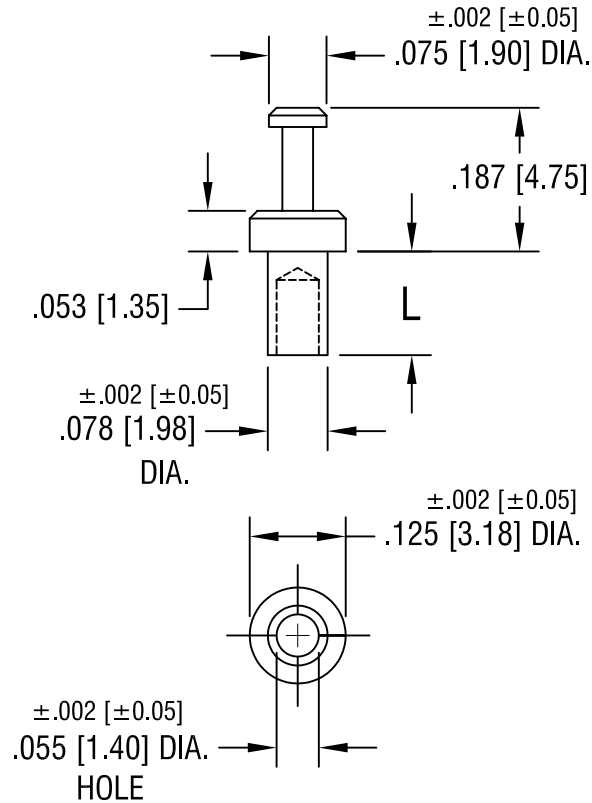


THIS DOCUMENT IS THE PROPERTY OF  
KEYSTONE ELECTRONICS CORP. AND  
SHALL NOT BE REPRODUCED, DISTRIBUTED  
OR USED AS A BASIS FOR MANUFACTURE  
WITHOUT PRIOR WRITTEN PERMISSION  
FROM KEYSTONE ELECTRONICS CORP.



| PART NO. | 'L' DIM.    |
|----------|-------------|
| 1520-1   | .078 [1.98] |
| 1520-2   | .109 [2.77] |
| 1520-3   | .141 [3.58] |
| 1520-4   | .172 [4.37] |

**KEYSTONE ELECTRONICS CORP.**

ASTORIA, N.Y. 11105-2017

PART NAME

SOLDER TERMINAL, SINGLE TURRET

MATERIAL

BRASS

FINISH

TIN PLATE

DRN BY

BOONE

DATE

3.11.97

APP'D

LN

SCALE

4X

2.13.08 CHANGE AS PER ECN 08-080

A

TOLERANCES

INCH [MM]

DECIMAL ±.005 [±0.15]

CODE

C

DWG NO.

1520-

DATE

DESCRIPTION

REV.