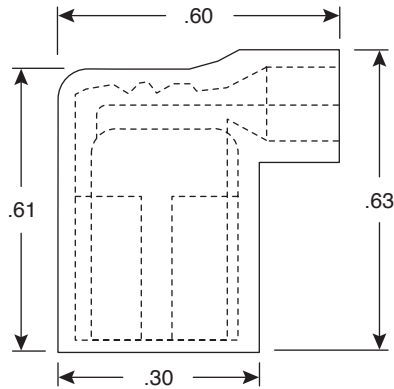
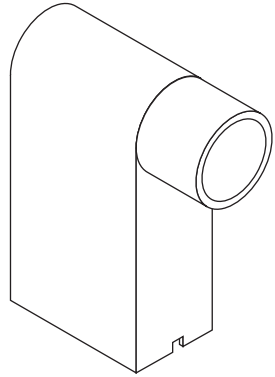


# Flag Disconnects (Female)

159-2225, 159-1625



Flag Disconnects (Female)



Dimensions: In.

| SPECIFICATIONS          |                               |
|-------------------------|-------------------------------|
| Type:                   | insulated flag                |
| Nema tab:               | .032 x .250                   |
| Terminal material:      | tin plated brass; .018" thick |
| Insulation material:    | nylon                         |
| Max. electrical rating: | 300V @ 105°C                  |

| MOUSER STOCK NO. | Color | Stud Size | Wire Size |
|------------------|-------|-----------|-----------|
| 159-2225         | Red   | 22-16     | 22-16     |
| 159-1625         | Blue  | 16-14     | 16-14     |

Date Last Revised: 6-27-05

Available from Mouser Electronics  
1-800-346-6873  
www.mouser.com

KC-300734

159-2225, 159-1625