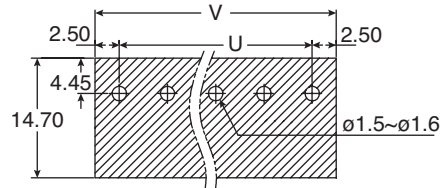
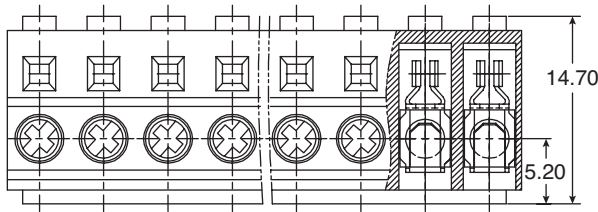


Terminal Block PCB Plug

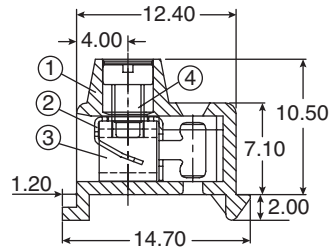
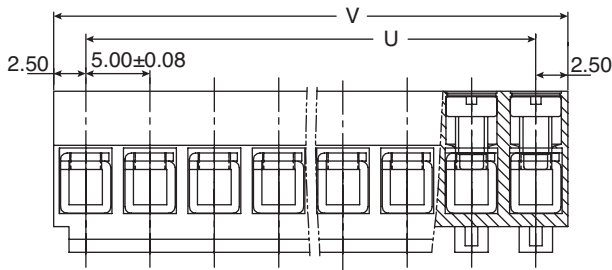
158-P02ED130R2966-E, 158-P03ED130R2966-E



Terminal Block PCB Plug



P.C.B. LAYOUT



DIMENSIONS: mm

Pole	2	3	4	5	6	7	8	9	10	11	12	13	14
U	5.00	10.00	15.00	20.00	25.00	30.00	35.00	40.00	45.00	50.00	55.00	60.00	65.00
V	10.00	15.00	20.00	25.00	30.00	35.00	40.00	45.00	50.00	55.00	60.00	65.00	70.00
Pole	15	16	17	18	19	20							
U	70.00	75.00	80.00	85.00	90.00	95.00							
V	75.00	80.00	85.00	90.00	95.00	100.00							

ELECTRICAL SPECIFICATIONS

Rating:	300V 10A
Pitch:	5.00mm
Insulation Withstands Voltage:	AC 2500V/min.
Insulation Resistance:	500MΩ or more at DC500V
Using Temperature Range:	-40°C~ + 100°C
Screw Torque Value:	4.0kgf-cm
Suitable Electric Wire:	AWG 22~14

RoHS Compliant

MATERIAL SPECIFICATIONS

No.	Description	Qty.	Material	Finish
1	Housing	1	PA66(VO)	Black
2	Clamp	P	Bronze	Tin Plated
3	Wire Cage	P	Steel	Zinc Plated
4	Screw	P	Steel	M2.5/Zinc Plated

RoHS Compliant

Date Last Revised: 04/04/13

Available from Mouser Electronics
1-800-346-6873 / www.mouser.com

KC-301433

Specifications are subject to change without notice. No liability or warranty implied by this information. Environmental compliance based on producer documentation.

158-P02ED130R2966-E, 158-P03ED130R2966-E