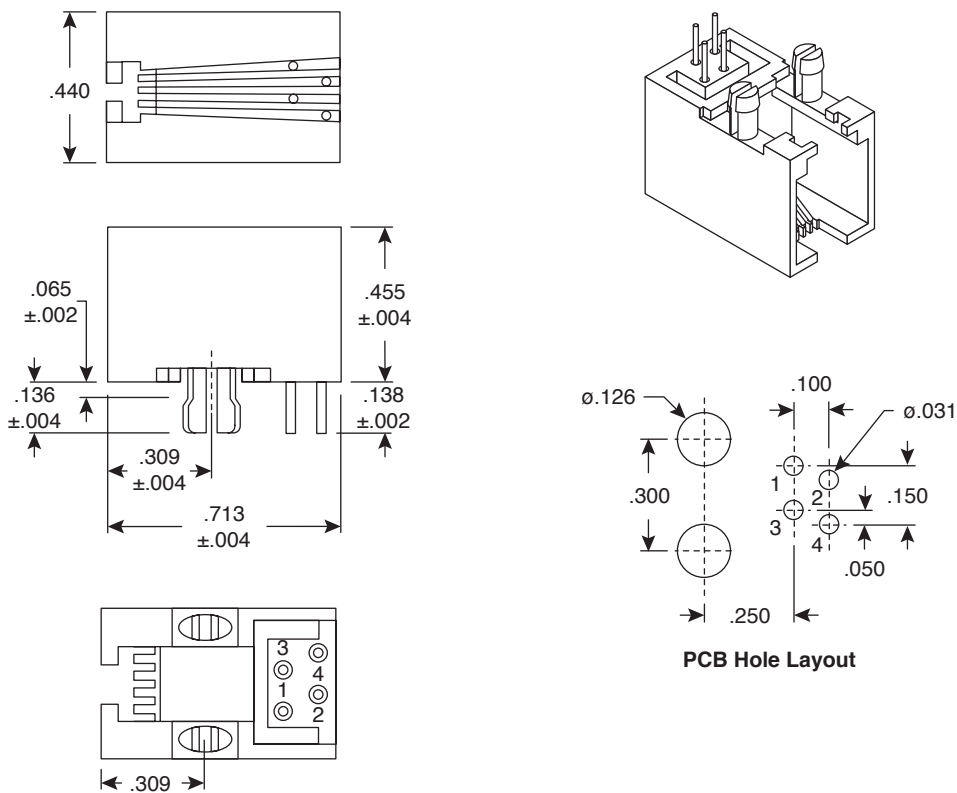


PCB Modular Jack

154-UL6443



PCB Modular Jack



Dimensions: In.

SPECIFICATIONS	
Type:	4P/4C Modular with PCB Leads
Housing:	25% Glass Filled FR50
Contact:	ø0.45mm Phosphor Bronze, 50μ Gold Over Nickel Plated
Color:	Black
USOC Type:	RJ11
Western Electric Type:	616PCB

Date Last Revised: 10-15-05

Available from Mouser Electronics
 1-800-346-6873
 www.mouser.com

KC-300618

154-UL6443