

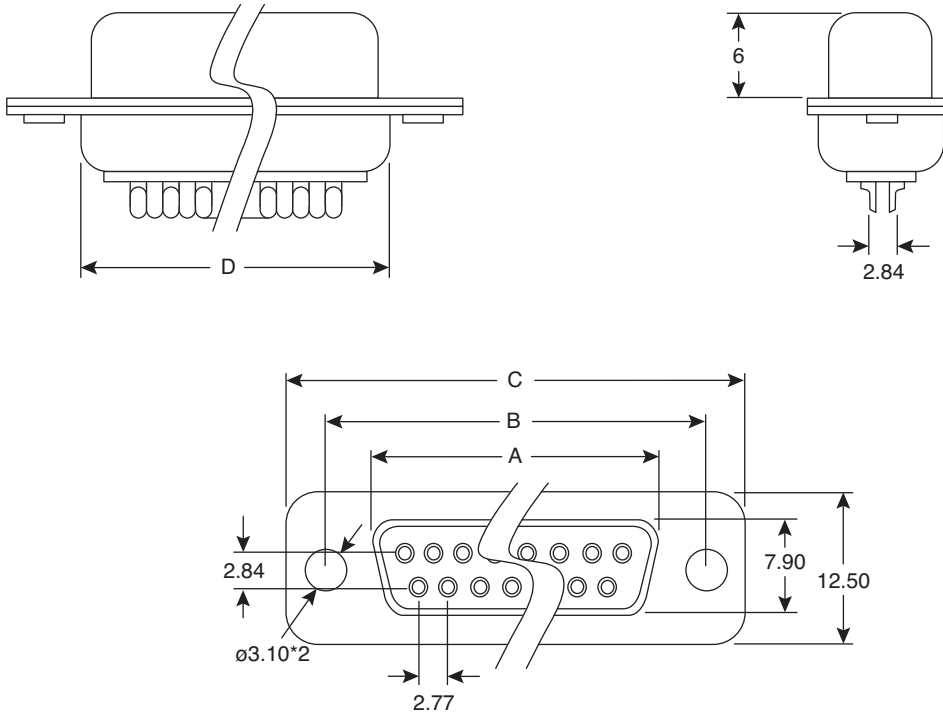
D-Sub Connectors Female

156-1309T-E, 156-1315T-E,
156-1325T-E, 156-1337T-E



D-Sub Connectors Female

156-1309T-E, 156-1315T-E, 156-1325T-E, 156-1337T-E



MOUSER STOCK NO.	Position	A	B	C	D
156-1309T-E	9F	16.30	25.00	30.80	19.20
156-1315T-E	15F	24.60	33.30	39.20	27.70
156-1325T-E	25F	38.30	47.10	53.10	41.10
156-1337T-E	37F	54.80	63.50	69.40	57.30

Dimensions: mm

MATERIAL SPECIFICATIONS	
Insulator:	Thermal Plastic
Contacts:	Copper Alloy
Shell:	Steel
Rivet, Boardlock:	Copper Alloy, Contact Plating
Underplated:	50μ"~100μ" Nickel
Contact Area:	1μ"~50μ" Selective Gold
Solder Tails Area:	100μ"~200μ" Tin/Lead (Brighten Tin) or 100μ"~200μ" Tin/Lead Free (Brighten Tin/Matte Tin)

ELECTRICAL SPECIFICATIONS	
Operation Voltage:	250 VAC Max.
Current Rating:	3 Amps Max.
Contact Resistance:	15 mΩ Max.
Insulation Resistance:	3000 MΩ Min. @ 500 VDC
Dielectric Withstanding Voltage:	1000 VAC / Minute
Temperature Range:	-55°C +105°C
RoHS Compliant	

Date Last Revised: 6-13-12

Available from Mouser Electronics
1-800-346-6873 / www.mouser.com

KC-301312

Specifications are subject to change without notice. No liability or warranty implied by this information. Environmental compliance based on producer documentation.