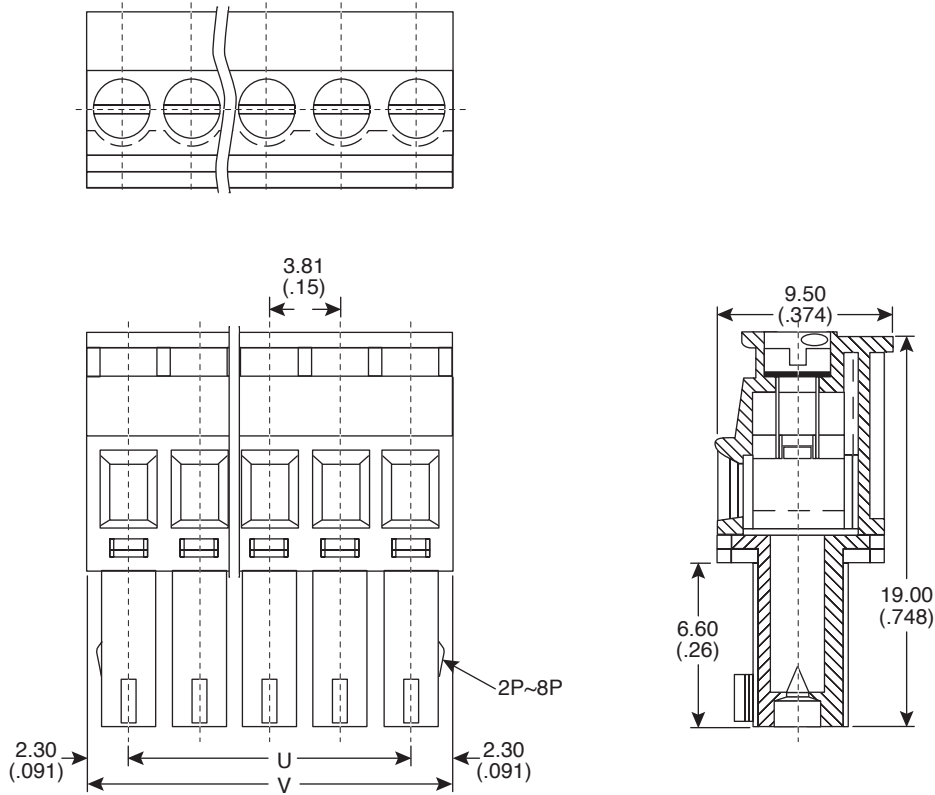


Terminal Block Plugs



158-P02EC381RP-E, 158-P03EC381RP-E, 158-P04EC381RP-E, 158-P05EC381RP-E,
158-P06EC381RP-E, 158-P07EC381RP-E, 158-P08EC381RP-E, 158-P09EC381RP-E,
158-P10EC381RP-E, 158-P11EC381RP-E, 158-P12EC381RP-E

Terminal Block Plugs



Dimensions: mm (in.)

P	02P	03P	04P	05P	06P	07P	08P	09P	10P	11P	12P
U mm	3.81	7.52	11.43	15.24	19.05	22.86	28.67	30.48	34.29	38.10	41.91
V mm	8.41	12.22	16.03	19.84	23.85	27.48	31.27	35.08	38.89	42.70	48.51

ELECTRICAL SPECIFICATIONS

Rating:	300V 8A
Pitch:	3.81 mm
Insulation withstands voltage:	AC 1000V/Min
Insulation resistance:	1000MΩ or more at DC500V
Temperature range:	-40°C~ +120°C
Electric wire:	22 ~ 16 AWG

MATERIAL SPECIFICATIONS

Base Housing:	PBT, Green
Clamp:	Bronze
Wire Cage:	Steel, Ni Plated
Screw:	Steel, M2/Zn Plated
Top Housing:	PBT, Green
RoHS Compliant	

158-P02EC381RP-E, 158-P03EC381RP-E, 158-P04EC381RP-E, 158-P05EC381RP-E,
158-P06EC381RP-E, 158-P07EC381RP-E, 158-P08EC381RP-E, 158-P09EC381RP-E,
158-P10EC381RP-E, 158-P11EC381RP-E, 158-P12EC381RP-E

Date Last Revised: 03/08/07

Available from Mouser Electronics
1-800-346-6873 / www.mouser.com

KC-301121

Specifications are subject to change without notice. No liability or warranty implied by this information. Environmental compliance based on producer documentation.