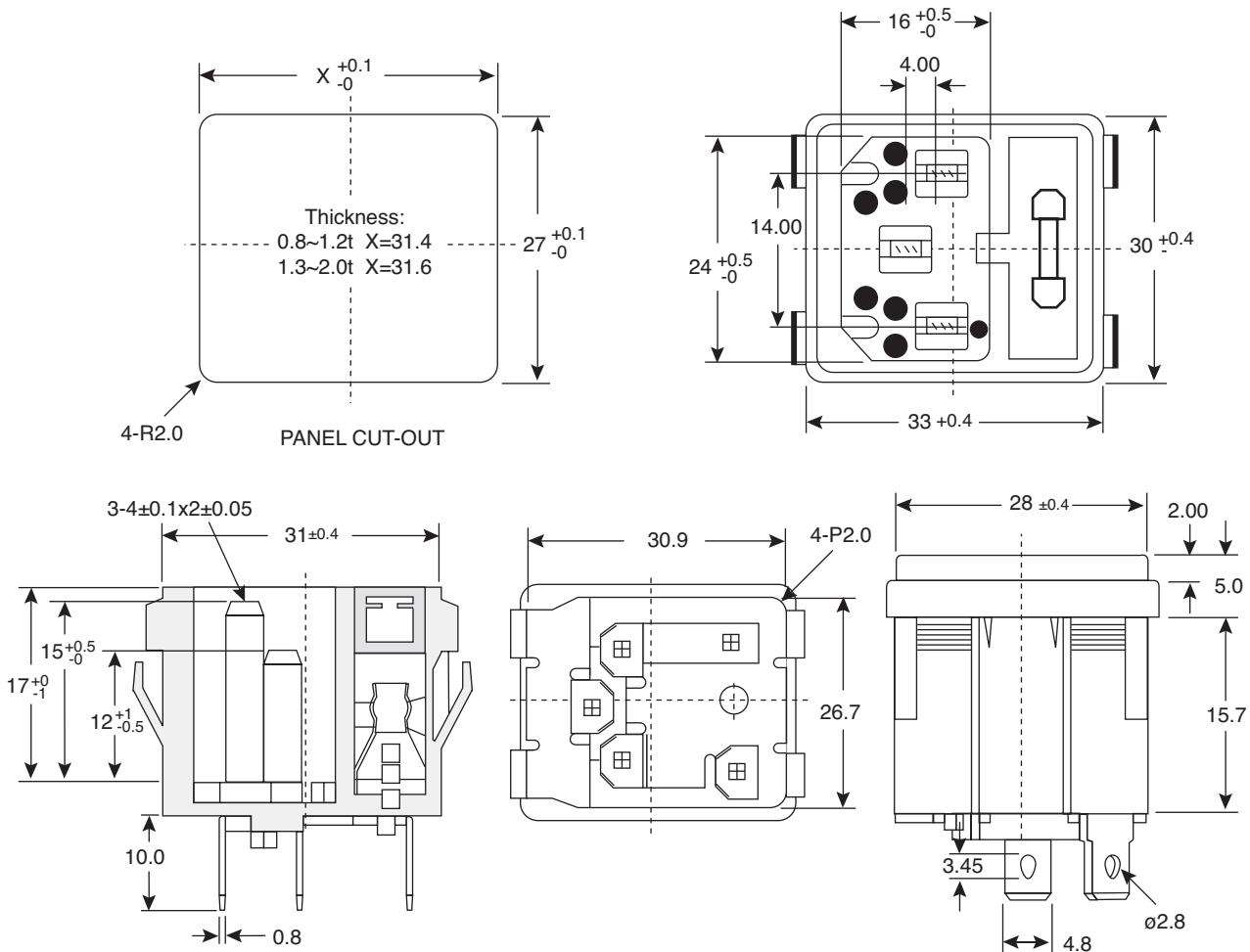


AC Power Inlet

161-0717-1-187-E



AC Power Inlet



Dimensions: mm

SPECIFICATIONS	
Housing:	Nylon 66 Flammability, UL 94V-0
Terminal:	Copper Alloy, Tin Plated
Rating:	10A 250V~
Insulation Resistance:	100MΩ Min., at 500 V DC
Electric Strength:	AC 2,000 V for 1 Minute
Fuse Holder:	Suitable for 5x20mm Fuse
RoHS Compliant	

Date Last Revised: 6-1-12

Available from Mouser Electronics
 1-800-346-6873
 www.mouser.com

KC-301083

161-0717-1-187-E