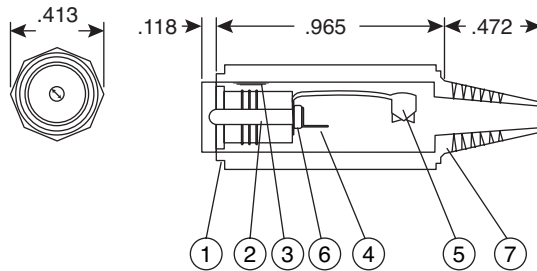
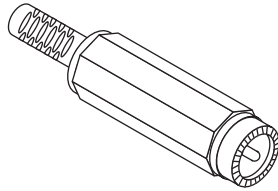


# In-Line DC Power Jack

163-0300-EX, 163-0301-EX



In-Line DC Power Jack



## DIMENSIONS: IN

Mouser Stock No.	Center Pin	
	Diameter	Length
163-0300-EX	2.0mm	8.5mm
163-0301-EX	2.35mm	8.5mm

SPECIFICATIONS	
<b>Power Rating:</b>	12VDC 1A
<b>Insulation Resistance:</b>	100MΩ min. @ 500VDC
<b>Contact Resistance:</b>	50mΩ max.
<b>Voltage Breakdown:</b>	500VAC for 1 minute
<b>Mating Plug O.D.:</b>	5.5mm
<b>Max Cable O.D.:</b>	4mm
RoHS Compliant by Exemption	

Materials		
1	<b>Body:</b>	Nickel Plated Brass
2	<b>Pin:</b>	Nickel Plated Brass
3	<b>Spring:</b>	Nickel Plated Brass
4	<b>Terminal A:</b>	Nickel Plated Brass
5	<b>Terminal B:</b>	Nickel Plated Brass
6	<b>Insulator:</b>	POM
7	<b>Cap:</b>	Polyethylene 80°C max.

Date Last Revised: 4-5-05

**Available from Mouser Electronics**  
**1-800-346-6873**  
**www.mouser.com**

KC-300832

163-0300-EX, 163-0301-EX