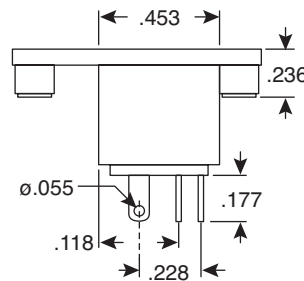
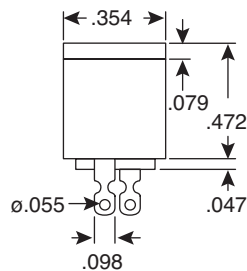
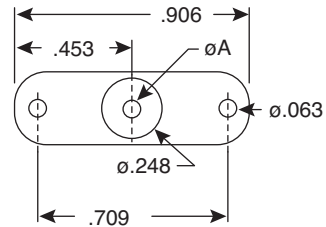
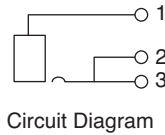
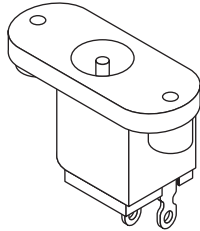


# DC Power Jacks

163-5005-E, 163-5006-E

**KOBI**CONN

DC Power Jacks



**DIMENSIONS: in.**  
(Except where noted.)

## SPECIFICATIONS

<b>Type:</b>	Molded with NC Switch
<b>Center Pin:</b>	A= 2.5mm (163-5005-E), 2.1mm (163-5006-E)
<b>Terminals:</b>	Silver Plated Brass
<b>Shunt Spring:</b>	Silver Plated Brass
<b>Rating:</b>	12V 1A
<b>Tip Spring:</b>	Silver Plated Copper Alloy
<b>Insulation Resistance:</b>	1,000M $\Omega$
<b>Contact Resistance:</b>	30m $\Omega$ Max.
<b>Extraction Force:</b>	0.3kg ~ 2.0kg
<b>Insertion Force:</b>	0.3kg ~ 2.0kg
<b>Withstand Voltage:</b>	500VAC for 1 Minute
<b>Life Time:</b>	Withstand >5,000 cycles insertion & withdrawal with testing plug
<b>Warning:</b>	This product should not be washed by a chloride.
RoHS Compliant	

Date Last Revised: 6-22-07

Available from Mouser Electronics  
1-800-346-6873 / [www.mouser.com](http://www.mouser.com)

KC-301048

Specifications are subject to change without notice. No liability or warranty implied by this information. Environmental compliance based on producer documentation.

163-5005-E, 163-5006-E