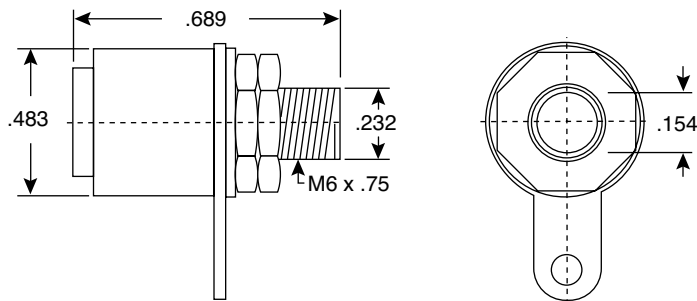
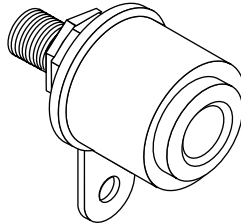


# Banana Jacks

16BJ381, 16BJ382, 16BJ383

KOBI CONN

Banana Jacks



DIMENSIONS IN.

## SPECIFICATIONS

<b>Type:</b>	banana, chassis mount
<b>Voltage Rating:</b>	125VAC 5A max.
<b>Breadkdown Voltage:</b>	300VAC-1000VDC
<b>Temp. Rating</b>	60°C @ max, melting point around 80°C
<b>Body, Nut:</b>	nickel plated brass
<b>Molded Body:</b>	ABS plastic
<b>Solder Lug, Washer:</b>	nickel plated steel
<b>Colors:</b>	red (16BJ381), black (16BJ382), green (16BJ383)

Date Last Revised: 10-3-11

Available from Mouser Electronics  
1-800-346-6873  
www.mouser.com

KC-300575

16BJ381, 16BJ382, 16BJ383