

## LISA2-PIN-RE MINIATURE LENS FOR LUXEON REBEL SERIES OF LEDS

LUXEON



- Lens material optical grade PMMA with high UV and temperature resistance (105°C/220°F). Lens holder molded of high quality black PC (120°C/248°F).
- High optical efficiency, up to 90%.
- Integrated holder with small position pins, see drawing below for more details. Fastening of holder to PCB with appropriate adhesive, e.c. epoxy or polyurethane based. NOTE: DO NOT USE SUPERGLUE.
- Please check fastening details from this link: ([http://www.ledil.com/datasheets/DataSheet\\_GLUES.pdf](http://www.ledil.com/datasheets/DataSheet_GLUES.pdf))
- Very small and compact dimensions: Diameter 9.9 mm, height 6.8 mm

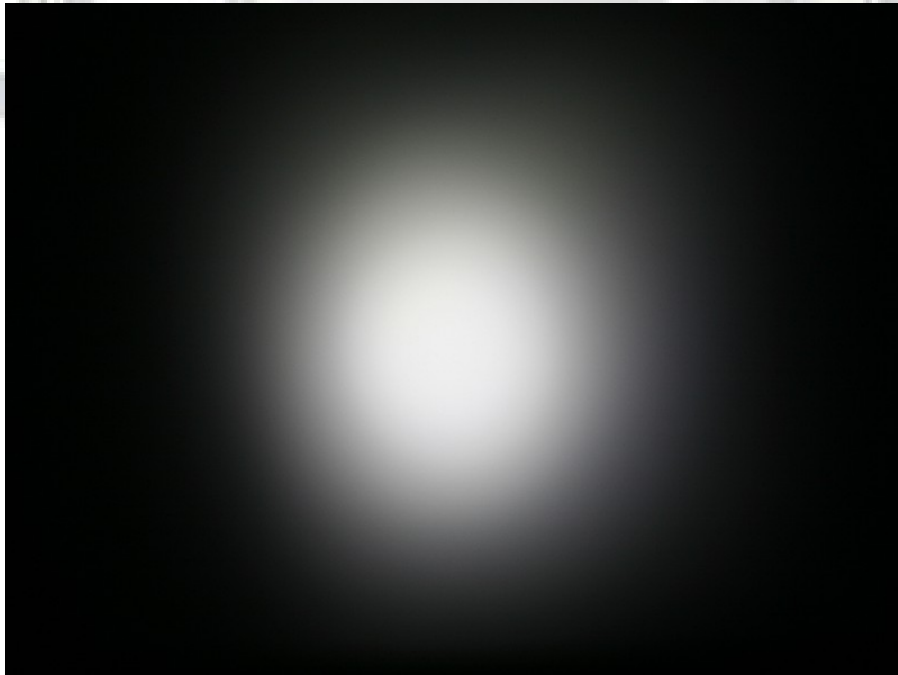
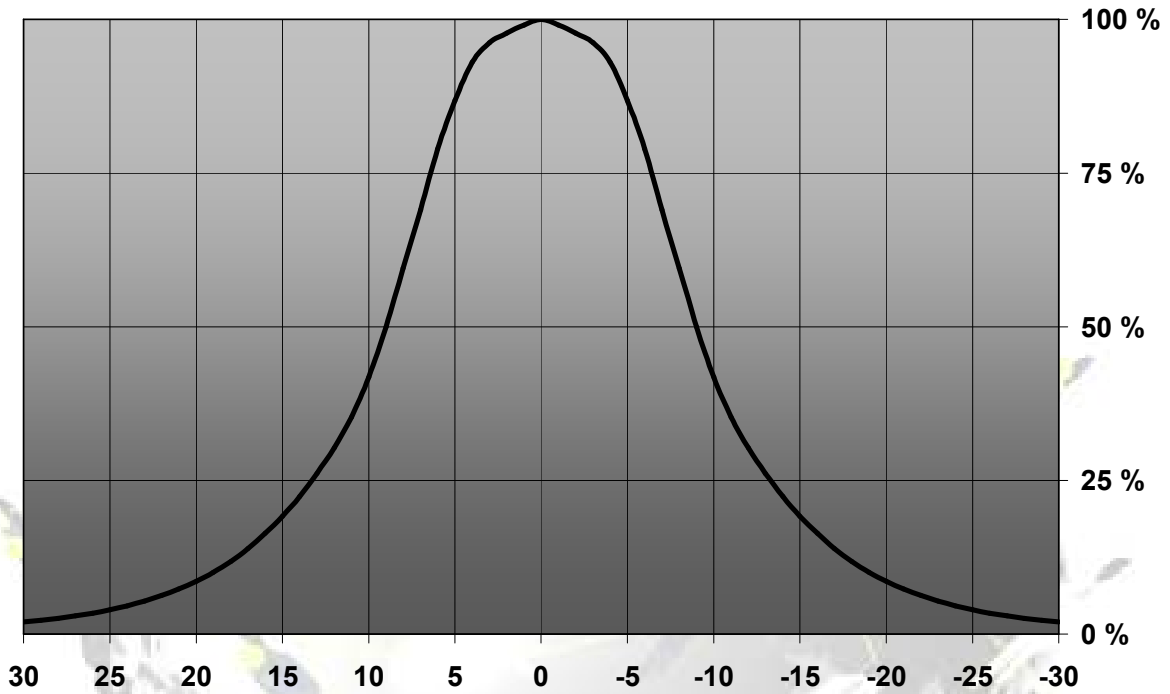
### LENS TYPES

NAME	ORDERING CODE	FWHM Angle
Lisa2-Pin Real Spot	FA11056_Lisa2-RS-Pin-RE	±9°
Lisa2-Pin Medium	FA10992_Lisa2-M-Pin-RE	±13°
Lisa2-Pin Oval	FA11126_Lisa2-O-Pin-RE	±10° x ±24°
Lisa2-Pin Wide	FA10993_Lisa2-W-Pin-RE	±19°

© Ledil Oy – PRELIMINARY - Subject to change without prior notice

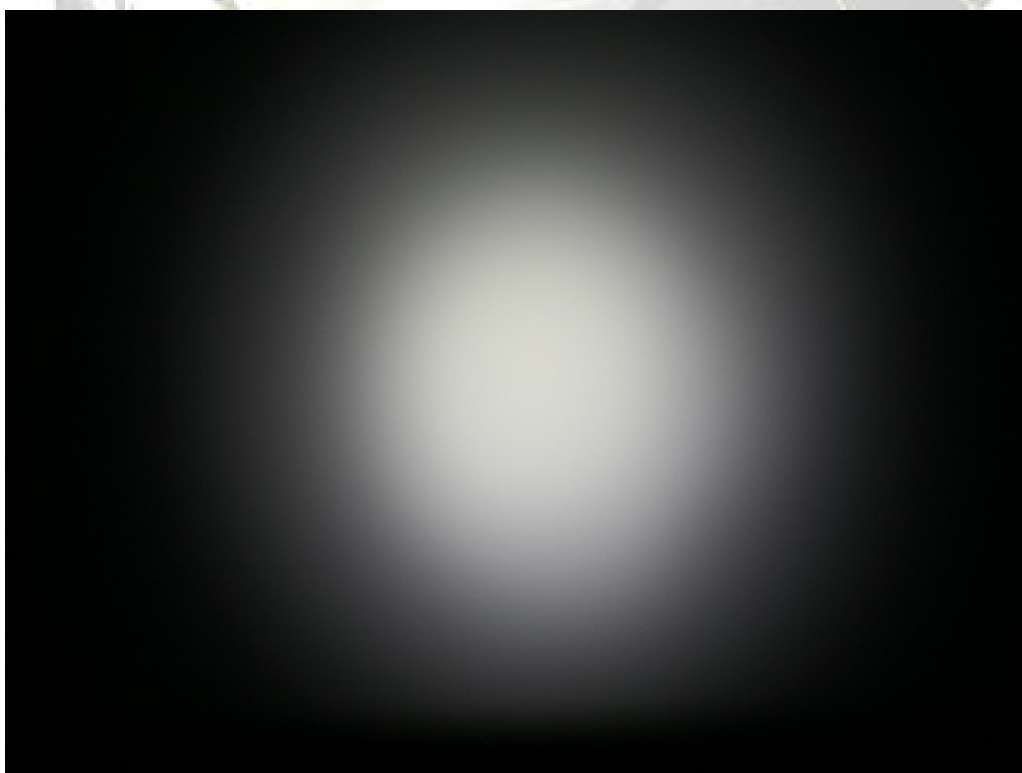
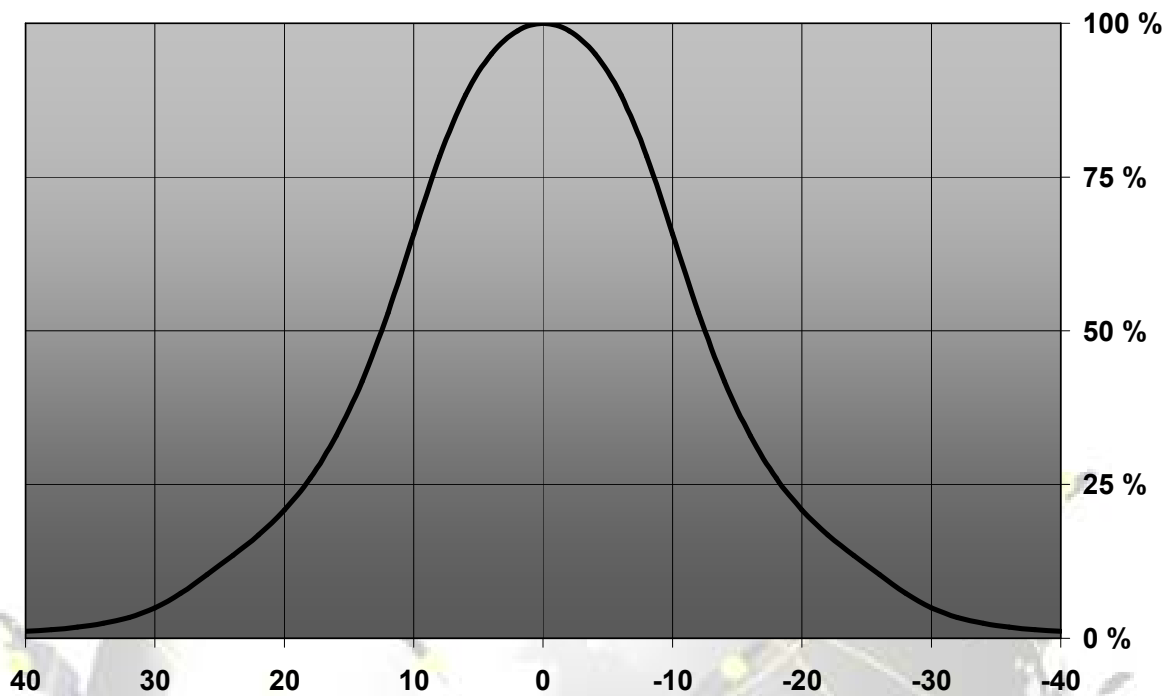
## MEASUREMENT DATA

Relative Intensity of FA11056\_Lisa2-RS-Pin-RE



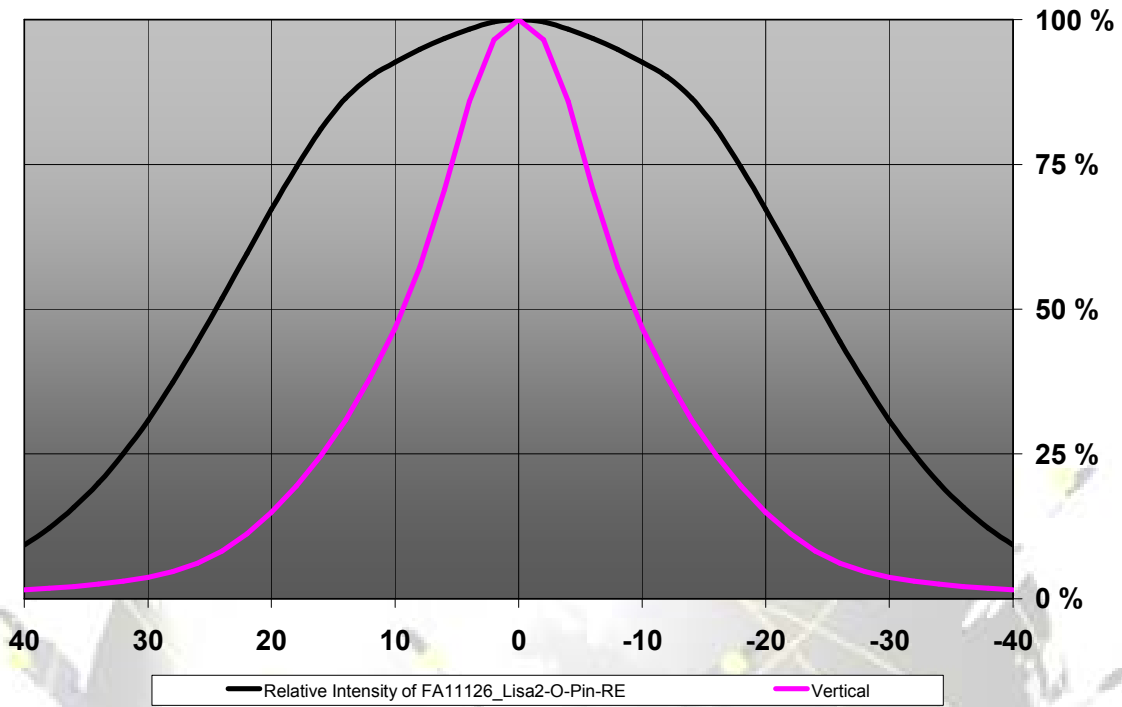
© Ledil Oy – PRELIMINARY - Subject to change without prior notice

Relative Intensity of FA10992\_Lisa2-M-Pin-RE



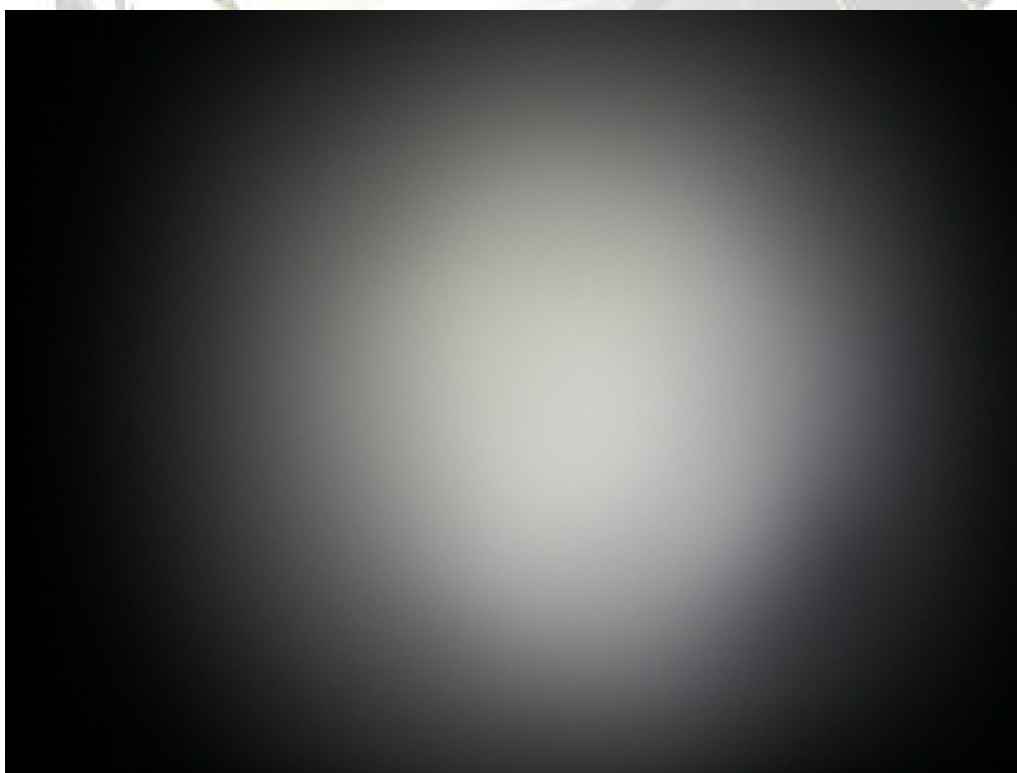
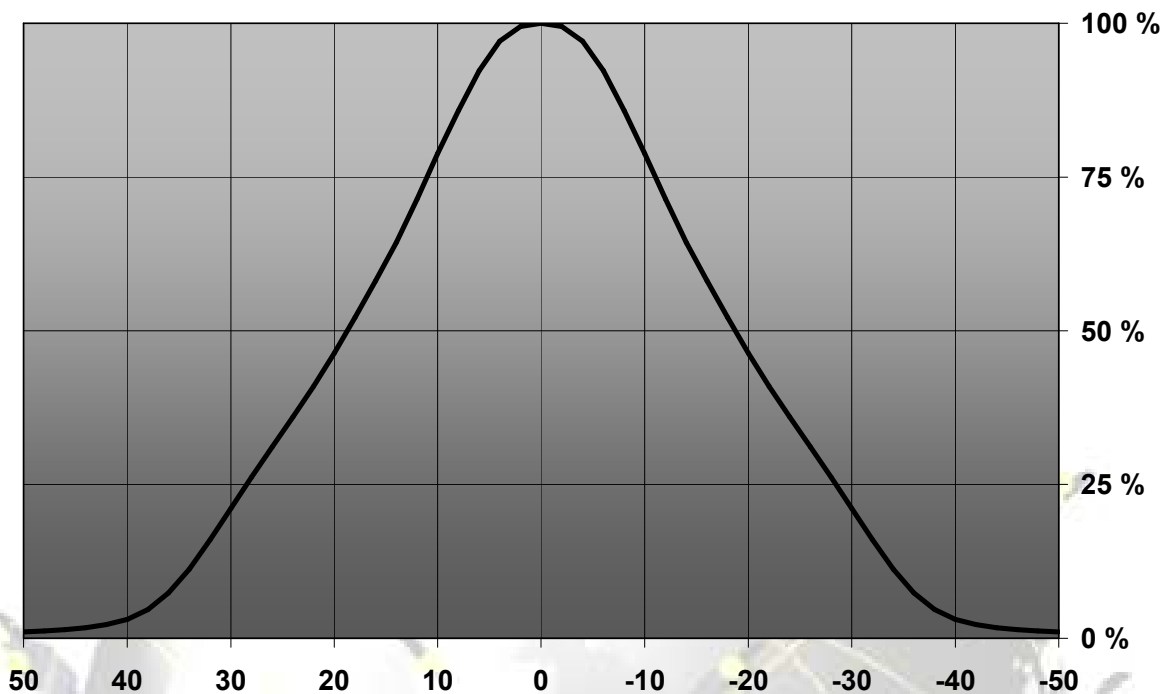
© Ledil Oy – PRELIMINARY - Subject to change without prior notice

Relative intensity of FA11126\_Lisa2-O-Pin-RE



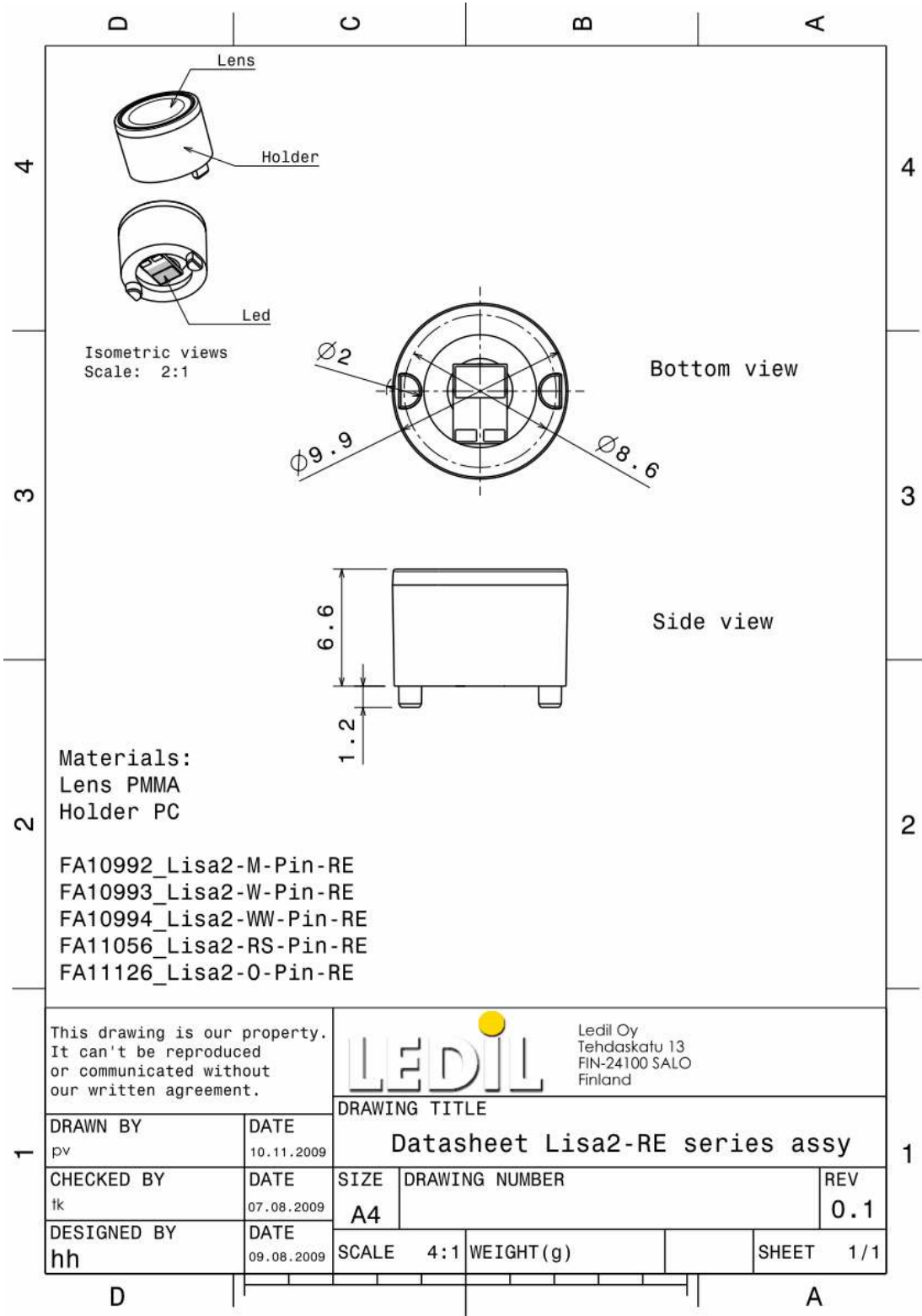
© Ledil Oy – PRELIMINARY - Subject to change without prior notice

Relative Intensity of FA10993\_Lisa2-W-Pin-RE



© Ledil Oy – PRELIMINARY - Subject to change without prior notice

## DRAWINGS



© Ledil Oy - PRELIMINARY - Subject to change without prior notice