



- Specially designed for Cree XR-E series of LEDs.
- New extremely wide street light design with very wide horizontal and vertical angle.
- Predecessor of the Strada-B, wider distribution than ever before.
- Special care taken to make a uniform white or warm white illumination.
- Lens material optical grade PMMA with high UV and temperature resistance (105°C/220°F). Allows use of high current and temperature conditions.
- Best available optical efficiency, approximately 95%.
- Fastening to heat sink with or without PU foam adhesive tape of automotive grade, please select which suits the best for your needs.
- We advise customer to ensure the suitability and sufficiency of the bond in the end product. For example, mechanical stress, vibration and holes on the surface of the circuit board weaken the strength of the tape.
- Please check fastening details from this link:
http://www.ledil.com/datasheets/DataSheet_TAPE.pdf

LENS TYPES

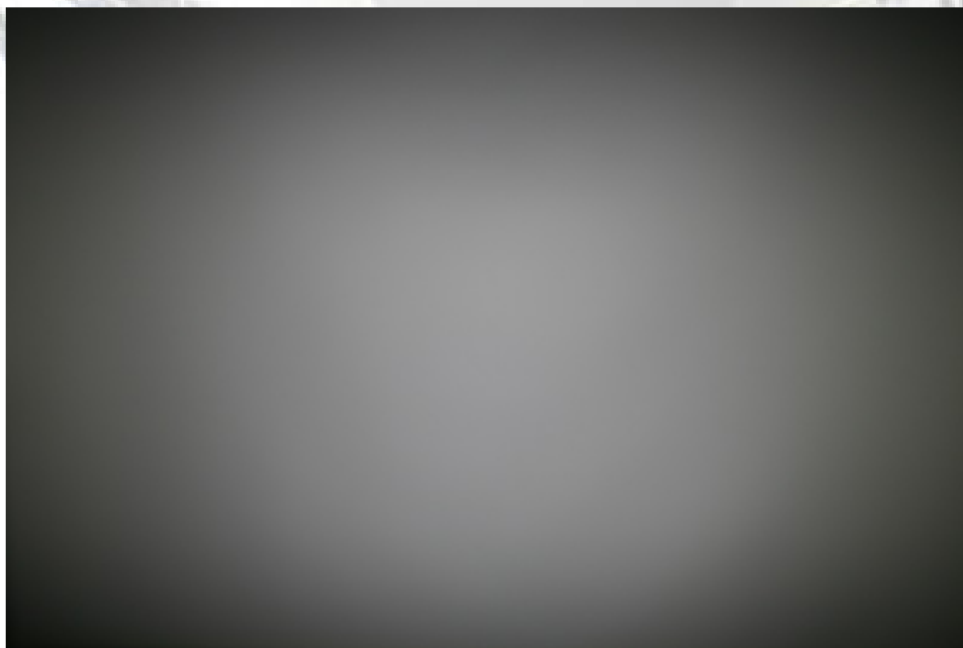
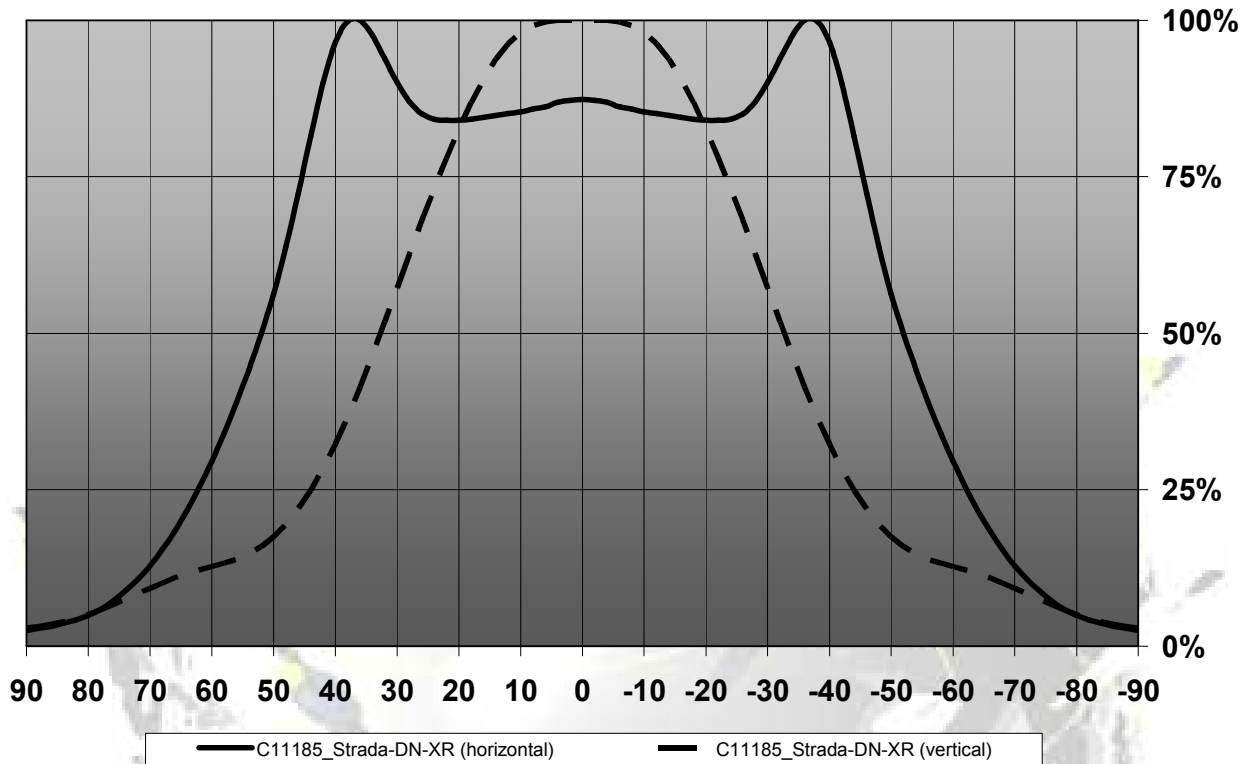
NAME	ORDERING CODE	FWHM Angle
Strada-DN-XR	C11185_Strada-DN-XR	±52° x ±33°
Strada-DN-XR-TAPE	CA11186_Strada-DN-XR-tape	±52° x ±33°

EULUMDAT & IES FILES AVAILABLE BY REQUEST

© Ledil Oy – PRELIMINARY - Subject to change without prior notice

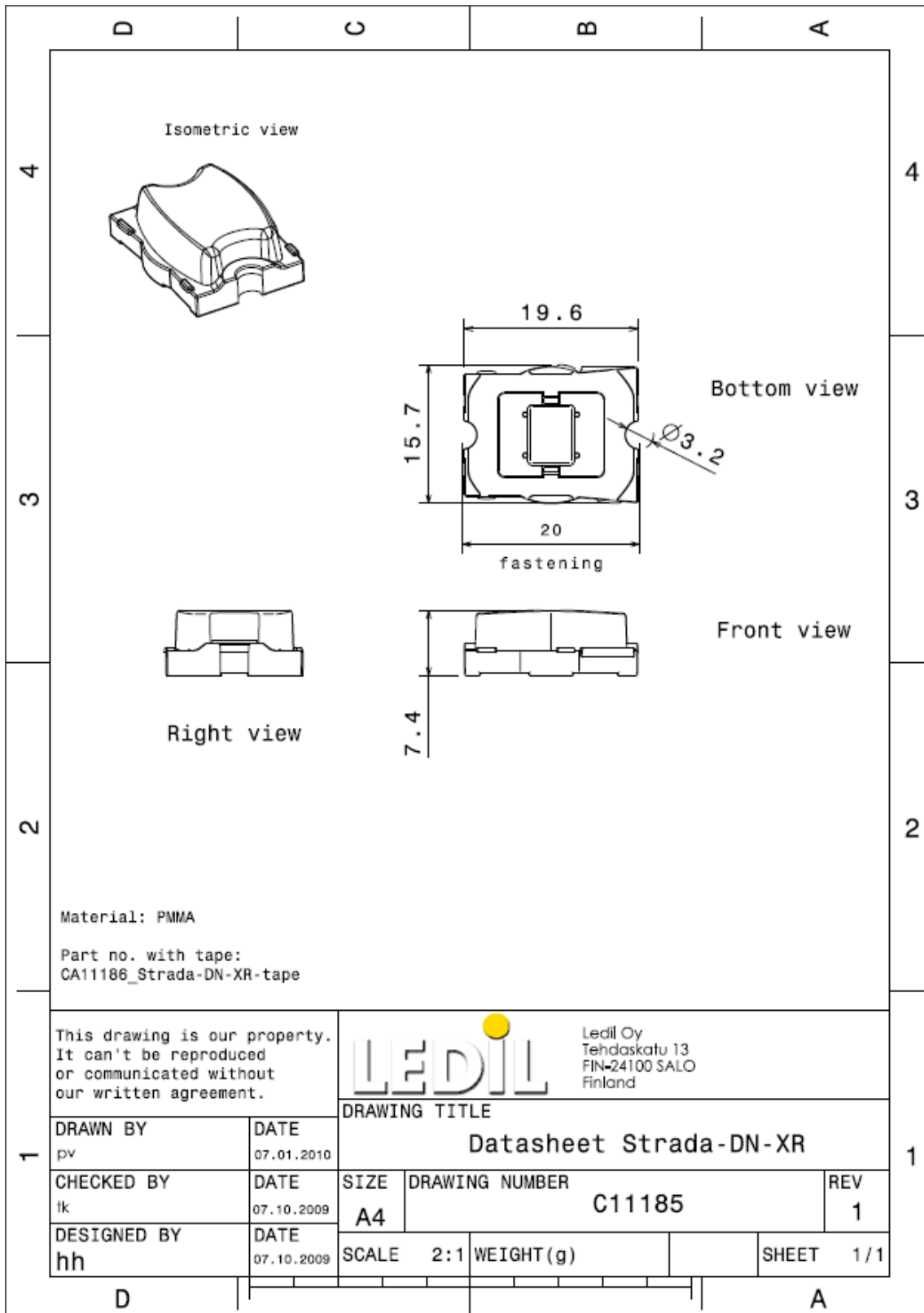
MEASUREMENT DATA

Relative Intensity of C11185_Strada-DN-XR



© Ledil Oy – PRELIMINARY - Subject to change without prior notice

DRAWINGS



© Ledil Oy - PRELIMINARY - Subject to change without prior notice