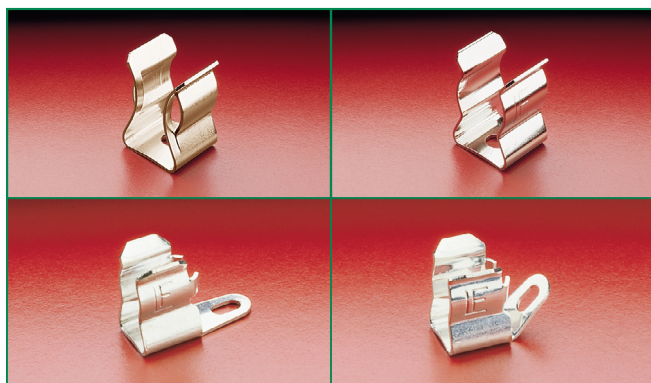


## Rivet / Eyelet Mount Fuse Clips for 1/4" - 13/16" Diameter Fuses

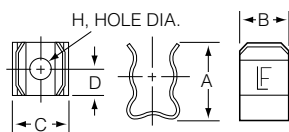


### Product Characteristics

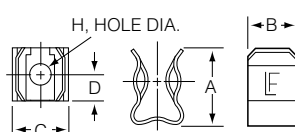
	101/102/121 Series	105/125 Series	107/127 Series	109/129 Series
<b>Compatible Fuse Size</b>	<b>1/4" Dia Fuses</b>	<b>13/32" Dia Fuses</b>	<b>9/16" Dia Fuses</b>	<b>13/16" Dia Fuses</b>

### Product Dimensions

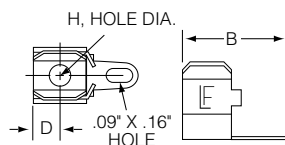
#### Earless Clip Type (without fuse stops)



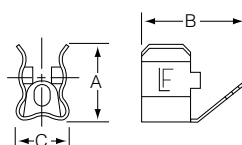
#### Ear Clip Type (with fuse stops)



#### Straight Solder Lug Type



#### 45° Angle Solder Lug Type



Catalog No.	Fuse Diameter	A	B	C	D	H Diameter
101001 101002 121001 121002	1/4"	.48"	.31"	.30"	.16"	.131"
101003 121004	1/4"	.47"	.58"	.31"	.15"	
102064			NA			
105001 105002 125001 125002	13/32"	.75"	.44"	.52"	.22"	
107002 127001 127002	9/16"	.94"	.59"	.65"	.25"	.203"
109001 109002 129001 129002	13/16"	1.31"	.75"	.88"	.31"	.265"

## Ordering Information

Ordering PN*	Catalog PN	Material	Plating	Style	Current Level	Packaging
0101 0001	101 001	Spring Brass	Nickel-plated	Ear	15A max	Z
0121 0001	121 001	Beryllium Copper	Silver-plated	Ear	30A max	Z
0105 0001	105 001	Spring Brass	Nickel-plated	Ear	15A max	Z
0125 0001	125 001	Beryllium Copper	Silver-plated	Ear	30A max	Z
0127 0001	127 001	Beryllium Copper	Silver-plated	Ear	30A max	Z
0109 0001	109 001	Phos. Bronze	Bare	Ear	60A max	H or Z
0129 0001	129 001	Beryllium Copper	Silver-plated	Ear	30A max	H or Z
0101 0002	101 002	Spring Brass	Nickel-plated	Earless	15A max	Z
0121 0002	121 002	Beryllium Copper	Silver-plated	Earless	30A max	Z
0105 0002	105 002	Spring Brass	Nickel-plated	Earless	15A max	Z
0125 0002	125 002	Beryllium Copper	Silver-plated	Earless	30A max	Z
0107 0002	107 002	Spring Brass	Nickel-plated	Earless	30A max	Z
0127 0002	127 002	Beryllium Copper	Silver-plated	Earless	30A max	H or Z
0109 0002	109 002	Phos. Bronze	Bare	Earless	60A max	H or Z
0129 0002	129 002	Beryllium Copper	Silver-plated	Earless	30A max	H or Z
0101 0003	101 003	Spring Brass	Tin-plated	Ear- Solder Lug 45*	15A max	Z
0121 0004	121 004	Beryllium Copper	Silver-plated	Ear- Solder Lug 45*	30A max	H or Z
0102 0064	102 064	Spring Brass	Tin-plated	Ear-Solder Lug Straight	15A max	H or Z

### Add Suffix to the Ordering PN for Packaging

"H" =std. package 100 pcs per pack

"Z" =for bulk package

## Additional Information



**Datasheet  
101 Series**



**Resources  
101 Series**



**Samples  
101 Series**



**Datasheet  
102 Series**



**Resources  
102 Series**



**Samples  
102 Series**



**Datasheet  
121 Series**



**Resources  
121 Series**



**Samples  
121 Series**



**Datasheet  
105 Series**



**Resources  
105 Series**



**Samples  
105 Series**



**Datasheet  
125 Series**



**Resources  
125 Series**



**Samples  
125 Series**



**Datasheet  
107 Series**



**Resources  
107 Series**



**Samples  
107 Series**

## Additional Information



**Datasheet  
127 Series**



**Resources  
127 Series**



**Samples  
127 Series**



**Datasheet  
109 Series**



**Resources  
109 Series**



**Samples  
109 Series**



**Datasheet  
129 Series**



**Resources  
129 Series**



**Samples  
129 Series**