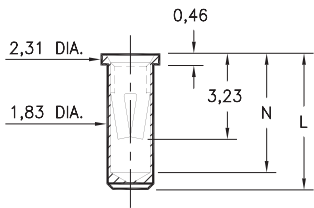


PIN RECEPTACLES

FOR 0,81 - 1,17 DIAMETER PINS

0327/0351/0373

03XX-0-15-XX-34-XX-10-0
Solder mount in 1,91 min. mounting hole
Also available on 12mm or 24mm wide carrier tape: See chart for details
Order as: 03XX-0-57-XX-34-XX-10-0



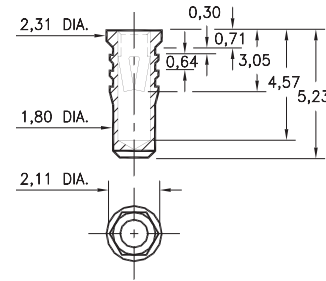
Basic Part Number	Length L	Depth N
0327-0	5,23	4,57
0351-0	5,74	5,08
0373-0	6,86	6,12

T&R Packaging

Basic Part Number	Tape Width	Parts per 330mm Reel
0327-0	12mm	1,400
0351-0	24mm	1,100
0373-0	24mm	1,000

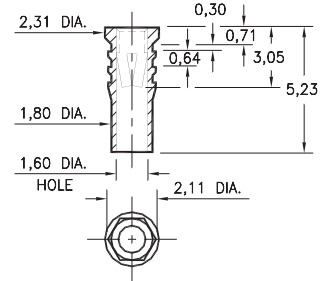
0328

0328-0-15-XX-34-XX-10-0
Hex press-fit in 2,01 plated through-hole



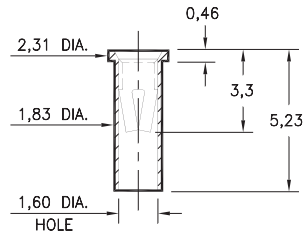
0334

0334-0-15-XX-34-XX-10-0
Hex press-fit in 2,01 plated through-hole



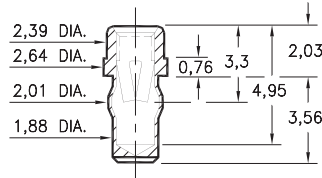
0312

0312-0-15-XX-34-XX-10-0
Solder mount in 1,91 min. mounting hole
Also available on 12mm or 24mm wide carrier tape: 1,400 parts per 330mm reel
Order as: 0312-0-57-XX-34-XX-10-0



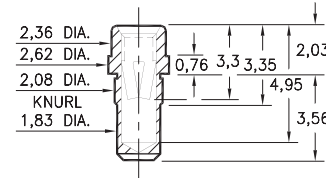
0333

0333-0-42-XX-34-XX-10-0
Press-fit in 1,93 mounting hole



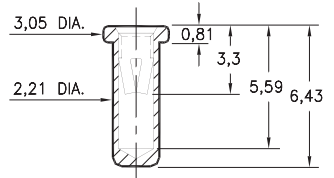
0357

0357-0-15-XX-34-XX-10-0
Press-fit in 1,98 mounting hole



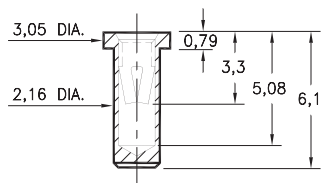
0317

0317-0-15-XX-34-XX-04-0
Solder mount in 2,31 min. mounting hole



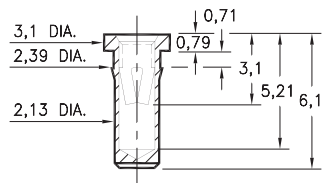
0340

0340-0-15-XX-34-XX-10-0
Solder mount in 2,21 min. mounting hole



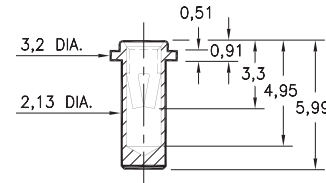
0345

0345-0-15-XX-34-XX-10-0
Press-fit in 2,26 mounting hole



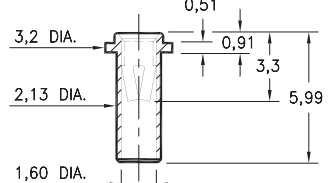
0316

0316-0-15-XX-34-XX-10-0
Solder mount in 2,21 min. mounting hole



0314

0314-0-15-XX-34-XX-10-0
Solder mount in 2,21 min. mounting hole



SPECIFICATIONS:

Shell Material: Brass Alloy 360, 1/2 Hard

Contact Material: Beryllium Copper Alloy 172, HT

Dimensions: Millimeters

Tolerances On: Lengths: ± 0,13
Diameters: ± 0,051
Angles: ± 2°



ORDER CODE: XXXX - X - XX - XX - 34 - XX - 10 - 0

BASIC PART #

SPECIFY SHELL FINISH:

- 01 5,08µm TIN/LEAD OVER NICKEL
- ◆ 80 5,08µm TIN OVER NICKEL (RoHS)
- ◆ 15 0,25µm GOLD OVER NICKEL (RoHS)

SPECIFY CONTACT FINISH:

- 01 5,08µm TIN/LEAD OVER NICKEL
- ◆ 80 5,08µm TIN OVER NICKEL (RoHS)
- ◆ 27 0,76µm GOLD OVER NICKEL (RoHS)

SELECT CONTACT:

#34 CONTACT (DATA ON PAGE 258)

(For alternate contact choices, see group E on page 248)

