

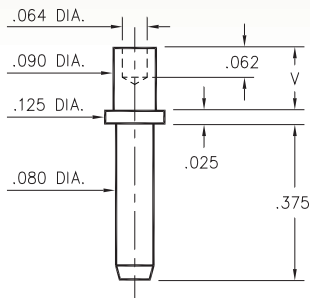
# MALE PCB PINS

## PRINTED CIRCUIT PINS

### 3231

3231-X-00-XX-00-00-08-0

Swage mount in .094 hole

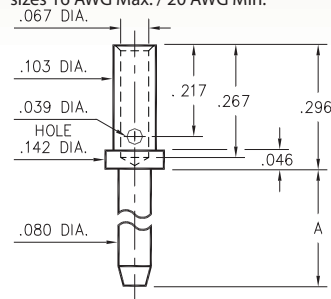


Basic Part Number	Board Thickness	Length V
3231-2	.062	.094
3231-3	.094	.125
3231-4	.125	.156

### 3609

3609-X-07-XX-00-00-08-0

Wire crimp termination. Accepts wire sizes 16 AWG Max. / 20 AWG Min.

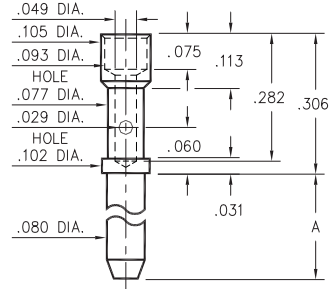


Basic Part Number	Pin Length A
3609-1	.200
3609-2	.375
3609-3	.500

### 3601

3601-X-07-XX-00-00-08-0

Wire crimp termination. Accepts wire sizes 20 AWG Max. / 24 AWG Min.

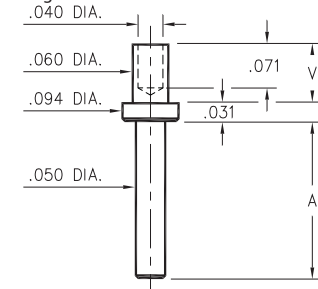


Basic Part Number	Pin Length A
3601-1	.200
3601-2	.375
3601-3	.500

### 3133/3138/3152

31XX-X-00-XX-00-00-08-0

Specify board thickness  
Swage mount in .064 hole



Basic Part Number	Pin Length A
3152-X	.094
3133-X	.219
3138-X	.282

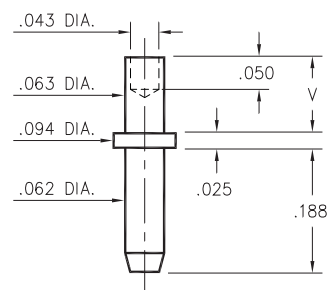
  

- X -	Board Thickness	Length V
1	.031	.063
2	.062	.094
3	.094	.125
4	.125	.156

### 3144

3144-X-00-XX-00-00-08-0

Swage mount in .067 hole

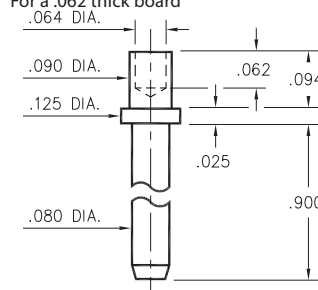


Basic Part Number	Board Thickness	Length V
3144-1	.031	.053
3144-2	.062	.084
3144-3	.094	.115

### 3233

3233-2-00-XX-00-00-08-0

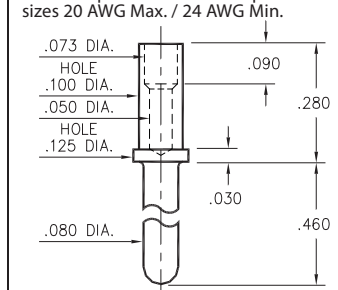
Swage mount in .094 hole  
For a .062 thick board



### 0520

0520-0-00-XX-00-00-03-0

Annealed  
Wire crimp termination. Accepts wire sizes 20 AWG Max. / 24 AWG Min.



#### SPECIFICATIONS:

**Pin Material:** Brass Alloy 360, 1/2 Hard  
(Except swage pins which are annealed)

**Dimensions:** Inches

**Tolerances On:** Lengths: ±.005  
Diameters: ±.002  
Angles: ±2°



ORDER CODE: XXXX - X - 0X - XX - 00 - 00 - XX - 0

BASIC PART #

SPECIFY PIN FINISH:

- 01 200 μ" TIN/LEAD OVER NICKEL
- ◆ 80 200 μ" TIN OVER NICKEL (RoHS)
- ◆ 15 10 μ" GOLD OVER NICKEL (RoHS)
- ◆ 21 20 μ" GOLD OVER NICKEL (RoHS)
- ◆ 34 50 μ" GOLD OVER NICKEL (RoHS)

