

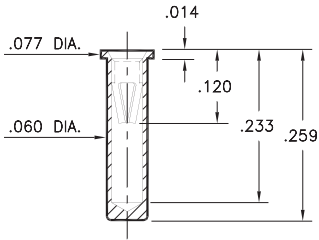
PIN RECEPTACLES

FOR .022" - .032" DIAMETER PINS

0295

0295-0-15-XX-06-XX-10-0

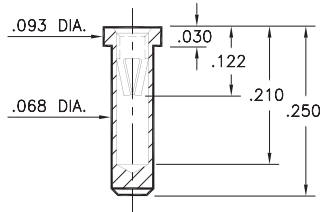
Solder mount in .063 min. mounting hole
Also available on 12mm wide carrier tape:
1,000 parts per 13" reel
Order as: 0295-0-57-XX-06-XX-10-0



0292

0292-0-15-XX-06-XX-10-0

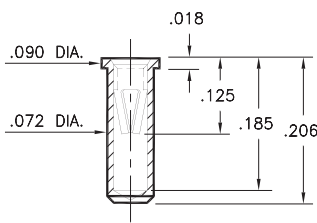
Solder mount in .071 min. mounting hole



0294

0294-0-15-XX-06-XX-10-0

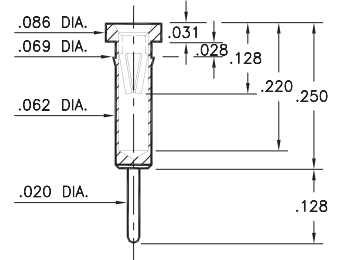
Solder mount in .076 min. mounting hole
Also available on 12mm wide carrier tape:
1,400 parts per 13" reel
Order as: 0294-0-57-XX-06-XX-10-0



0398

0398-0-15-XX-06-XX-04-0

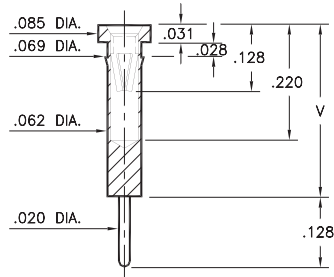
Press-fit in .066 mounting hole



0397

0397-X-15-XX-06-XX-04-0

Press-fit in .066 mounting hole

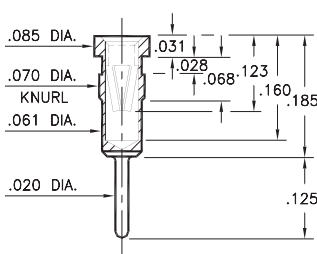


Basic Part Number	Length V
0397-0	.353
0397-1	.333
0397-2	.413

0297

0297-0-15-XX-06-XX-04-0

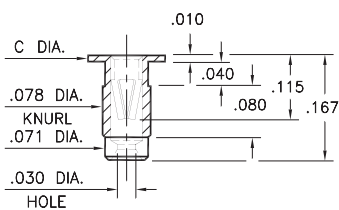
Press-fit in .067 mounting hole



9019/9039

90X9-0-19-XX-06-XX-10-0

Press-fit in .075 mounting hole



Basic Part Number	Head Dia. C
9019-0	.125
9039-0	.100

SPECIFICATIONS:

Shell Material: Brass Alloy 360, 1/2 Hard

Contact Material: Beryllium Copper Alloy 172, HT

Dimensions: Inches

Tolerances On: Lengths: ±.005

Diameters: ±.002

Angles: ± 2°



ORDER CODE: XXXX - X - XX - XX - 06 - XX - XX - 0

BASIC PART #

SPECIFY SHELL FINISH:

- 01 200 μ" TIN/LEAD OVER NICKEL
- ◆ 80 200 μ" TIN OVER NICKEL (RoHS)
- ◆ 15 10 μ" GOLD OVER NICKEL (RoHS)

SPECIFY CONTACT FINISH:

- 01 200 μ" TIN/LEAD OVER NICKEL
- ◆ 80 200 μ" TIN OVER NICKEL (RoHS)
- ◆ 27 30 μ" GOLD OVER NICKEL (RoHS)

SELECT CONTACT:

#06 CONTACT (DATA ON PAGE 255)

(For alternate contact choices, see group D on page 248)

