

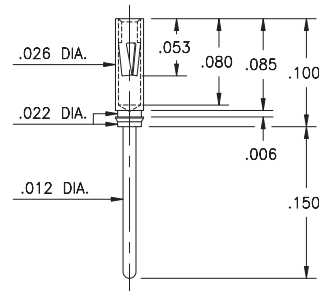
PIN RECEPTACLES

**FOR .008" - .013" DIAMETER PINS (#04 CONTACT)
AND .012" - .017" DIAMETER PINS (#10 CONTACT)
(SEE SPECIFIC CONTACT RANGE ON PAGE 250)**

8210

8210-0-15-15-04-27-04-0

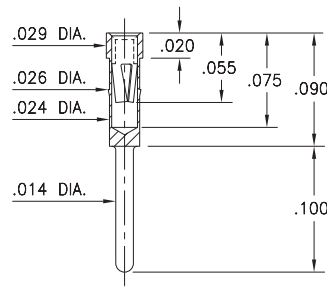
Press-fit in .024/.027 stepped hole



0439

0439-0-15-15-04-27-04-0

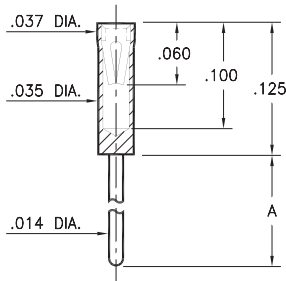
Press-fit in .025 mounting hole



X464

X464-X-15-XX-10-XX-04-0

Solder mount in .016 min. mounting hole

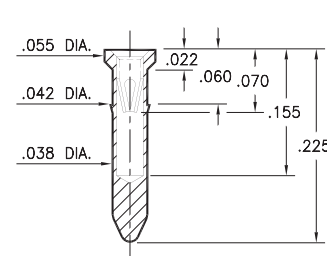


| Basic Part Number | Length A |
|-------------------|----------|
| 0464-0 | .125 |
| 0464-1 | .250 |
| 6464-0 | .275 |

9225

9225-0-15-XX-10-XX-10-0

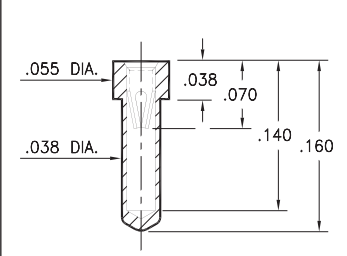
Press-fit in .039 mounting hole



0529

0529-0-15-XX-10-XX-10-0

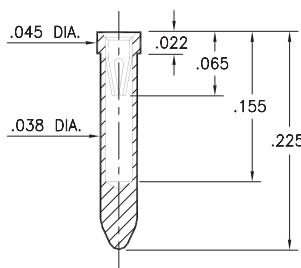
.040 min. mounting hole



8947

8947-0-15-XX-10-XX-10-0

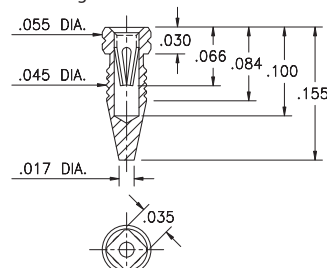
Solder mount in .040 min. mounting hole



4993

4993-0-15-15-10-27-10-0

Compliant press-fit in .041 - .043 Dia. mounting hole



SPECIFICATIONS:

Shell Material: Brass Alloy 360, 1/2 Hard

Contact Material: Beryllium Copper Alloy 172, HT

Dimensions: Inches

Tolerances On: Lengths: ±.005

Diameters: ±.002

Angles: ±2°



ORDER CODE: XXXX - X - XX - XX - XX - XX - 0

BASIC PART #

SPECIFY SHELL FINISH:

- 01 200 μ" TIN/LEAD OVER NICKEL
- ◆ 80 200 μ" TIN OVER NICKEL (RoHS)
- ◆ 15 10 μ" GOLD OVER NICKEL (RoHS)

SPECIFY CONTACT FINISH:

- 02 100 μ" TIN/LEAD OVER NICKEL
- ◆ 84 100 μ" TIN OVER NICKEL (RoHS)
- ◆ 27 30 μ" GOLD OVER NICKEL (RoHS)

SELECT CONTACT:

**#04 or #10 CONTACT (DATA ON PAGE 250)
(CONTACTS #04 & #10 NOT INTERCHANGEABLE)**

