

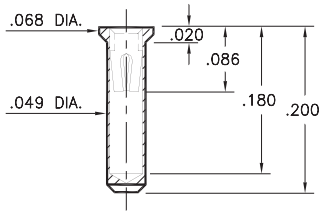
PIN RECEPTACLES

FOR .015" - .025" DIAMETER PINS

0660

0660-0-15-XX-30-XX-10-0

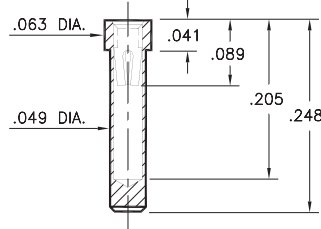
Solder mount in .051 min. mounting hole



0677

0677-0-15-XX-30-XX-10-0

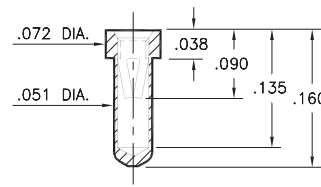
Solder mount in .051 min. mounting hole



0555

0555-0-15-XX-32-XX-10-0

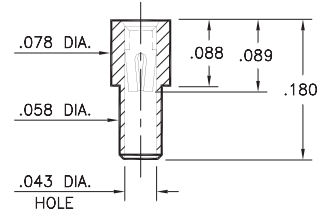
Solder mount in .053 min. mounting hole
Also available on 16mm wide carrier tape:
1,800 parts per 13" reel
Order as: 0555-0-57-XX-32-XX-10-0



0558

0558-0-15-XX-30-XX-10-0

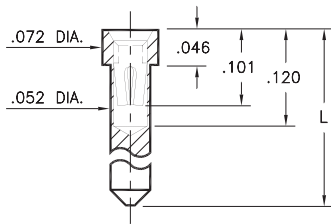
Solder mount in .061 min. mounting hole



0675/0679

067X-0-15-XX-30-XX-10-0

Solder mount in .054 min. mounting hole

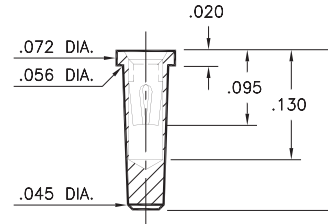


Basic Part Number	Length L
0675-0	.145
0679-0	.203

1065/1066/7065

X06X-0-15-XX-30-XX-10-0

Solder mount in .055 min. mounting hole

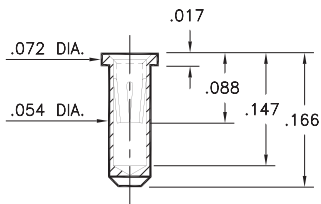


Basic Part Number	Length L
1065-0	.190
1066-0	.160
7065-0	.181

0682

0682-0-15-XX-32-XX-10-0

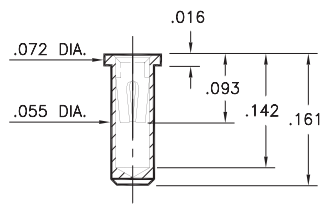
Solder mount in .056 min. mounting hole
Also available on 16mm wide carrier tape:
1,500 parts per 13" reel
Order as: 0682-0-57-XX-32-XX-10-0



0667

0667-0-15-XX-30-XX-10-0

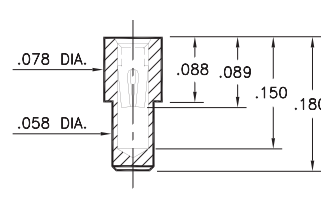
Solder mount in .057 min. mounting hole
Also available on 16mm wide carrier tape:
1,700 parts per 13" reel
Order as: 0667-0-57-XX-30-XX-10-0



0665

0665-0-15-XX-30-XX-10-0

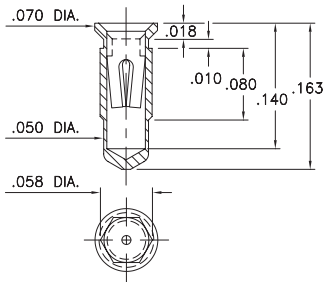
Solder mount in .061 min. mounting hole
Also available on 16mm wide carrier tape:
1,580 parts per 13" reel
Order as: 0665-0-57-XX-30-XX-10-0



4286

4286-0-15-XX-30-XX-10-0

Hex press-fit in .055 plated through-hole



SPECIFICATIONS:

Shell Material: Brass Alloy 360, 1/2 Hard

Contact Material: Beryllium Copper Alloy 172, HT

Dimensions: Inches

Tolerances On: Lengths: ±.005

Diameters: ±.002

Angles: ± 2°



ORDER CODE: XXXX - X - XX - XX - XX - XX - 10 - 0

BASIC PART #

SPECIFY SHELL FINISH:

01 200 μ" TIN/LEAD OVER NICKEL

◆ 80 200 μ" TIN OVER NICKEL (RoHS)

◆ 15 10 μ" GOLD OVER NICKEL (RoHS)

SPECIFY CONTACT FINISH:

02 100 μ" TIN/LEAD OVER NICKEL

◆ 84 100 μ" TIN OVER NICKEL (RoHS)

◆ 27 30 μ" GOLD OVER NICKEL (RoHS)

SELECT CONTACT:

#30 or #32 CONTACT (DATA ON PAGE 253)

(For alternate contact choices, see groups B and C on page 248)

