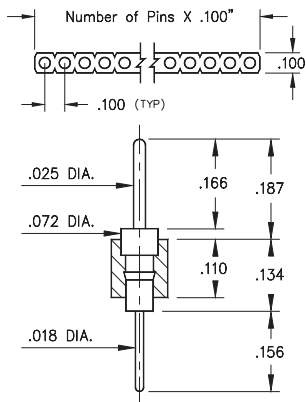
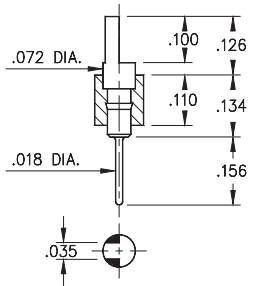


# INTERCONNECTS

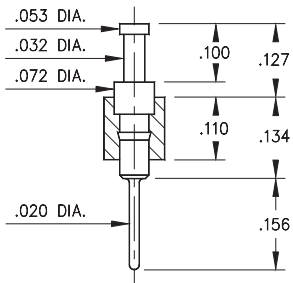
## SERIES 350, 360, 370, 380 • .100" GRID SOLDER TAIL • SINGLE ROW STRIPS



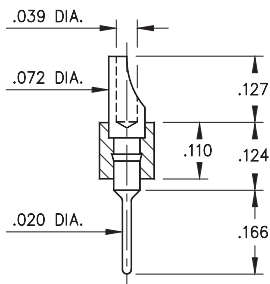
**FIG. 1**



**FIG. 2**



**FIG. 3**



**FIG. 4**

- Series 350, 360, 370 & 380 single row header strips come in various styles (pin, slotted, head, turret and solder cup) with pluggable solder tails

350...001 uses pin #0290

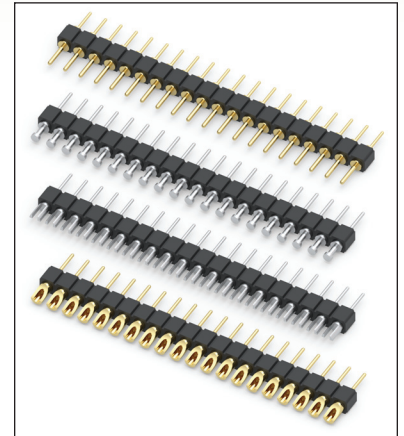
360...001 uses pin #0282

370...001 uses pin #0700

380...001 uses pin #8000

See pages 215 and 216 for details

- Insulators are high temperature thermoplastic, suitable for all soldering operations



### ORDERING INFORMATION

	Series 350...001	.025" / .018" Dia. Solder Tails
<b>FIG. 1</b>	350-XX-1	-00-001000 Specify number of pins 01-64
<b>FIG. 2</b>	Series 360...001	Slotted Head / Solder Tail
	360-XX-1	-00-001000 Specify number of pins 01-64
<b>FIG. 3</b>	Series 370...001	Turret / Solder Tail
	370-XX-1	-00-001000 Specify number of pins 01-64
<b>FIG. 4</b>	Series 380...001	Solder Cup / Solder Tail
	380-XX-1	-00-001000 Specify number of pins 01-64



XX=Plating Code  
See Below

For  
Electrical, Mechanical  
& Environmental Data,  
See page 264

SPECIFY PLATING CODE XX=	10	90	40	
Pin Plating 	10 μ" Au	200 μ" Sn/Pb	200 μ" Sn	

