

SPRING-LOADED CONNECTORS

SERIES 319, 330 • .100" GRID TARGET CONNECTORS FOR SPRING-LOADED ASSEMBLIES • SINGLE ROW STRIPS

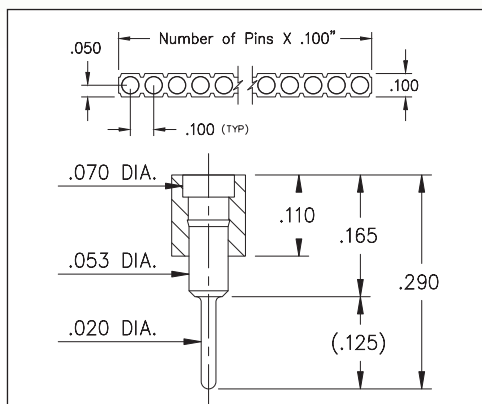


FIG. 1

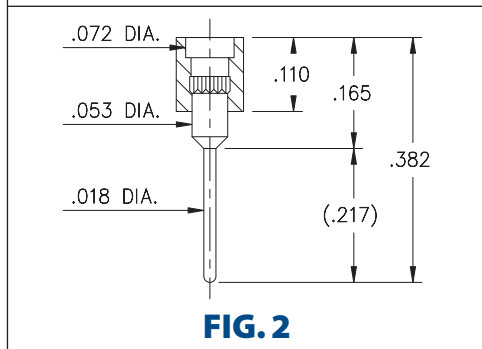


FIG. 2

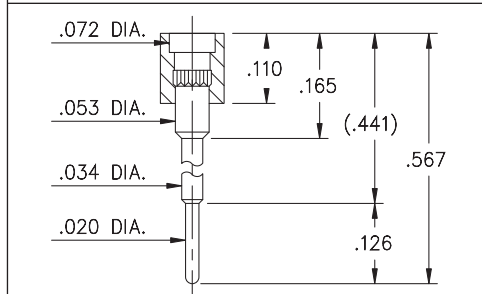


FIG. 3

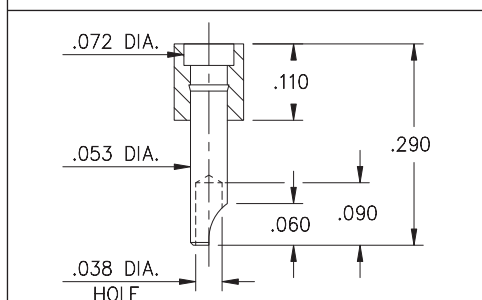
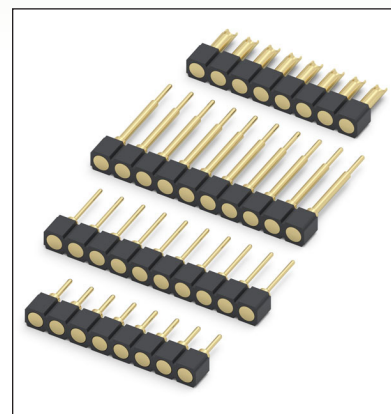


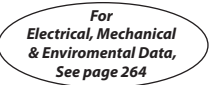




FIG. 4

- Series 319 and 330 Spring Target Connectors, supplied in single row strips. Available in through-hole and wire termination configurations
- Target Connectors provide an excellent gold-plated conductive mating surface for spring loaded connectors. These series are offered with a flat face for making contact with our standard .042" dia. spring pin plungers
- Target connectors use MM #1938, #1940, #1942 and #3024 pins. See page 218 for details
- Insulators are high temperature thermoplastic



ORDERING INFORMATION

FIG. 1	Series 319...001	Standard Solder Tails
	319-10-1__-00-001000	Specify number of pins → 01-64
FIG. 2	Series 319...002	Long Solder Tails
	319-10-1__-00-002000	Specify number of pins → 01-64
FIG. 3	Series 319...005	Elevated with Solder Tails
	319-10-1__-00-005000	Specify number of pins → 01-64
FIG. 4	Series 330...240	Solder Cups
	330-10-1__-00-240000	Specify number of pins → 01-64
  		
SPECIFY PLATING CODE XX=		
Pin Plating 	10 	10 μ" Au