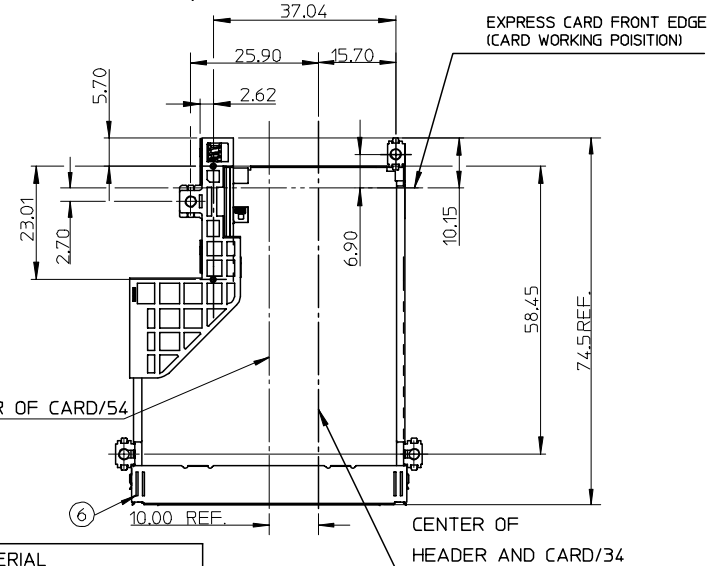
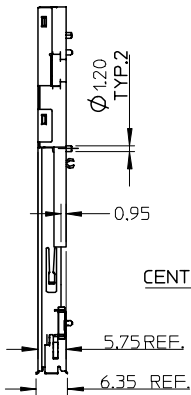
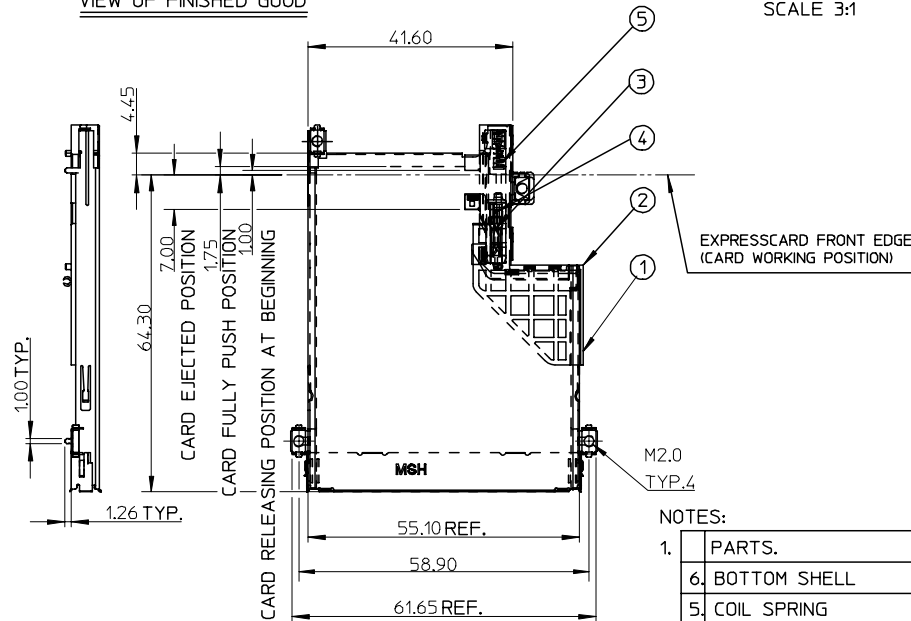


P/N	DESCRIPTION
47150-0003	W/O BOTTOM SHELL
47150-0004	W BOTTOM SHELL

VIEW OF FINISHED GOOD

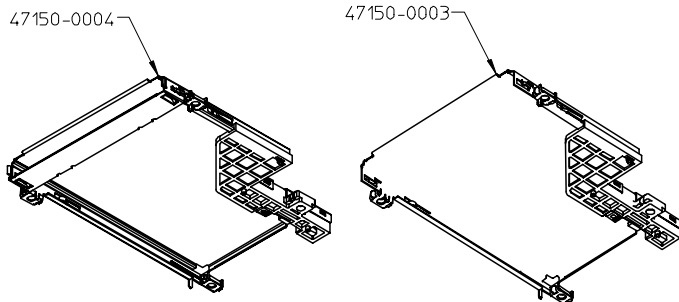


NOTES:

1.	PARTS.	MATERIAL
6.	BOTTOM SHELL	STAINLESS STEEL
5.	COIL SPRING	PIANO WIRE
4.	CAM PIN	STAINLESS STEEL
3.	HEART CAM SLIDER	HIGH TEMPERATURE THERMOPLASTIC
2.	HOUSING FOR HEART CAM	HIGH TEMPERATURE THERMOPLASTIC
1.	METAL COVER	STAINLESS STEEL

2. THE EJECTOR MECHANISM TO BE ASSEMBLED BASES ON 34 CARD CENTER LINE.
3. PRODUCT SPEC. REFERS TO PS-47202-001

4. APPLICABLE HEADER: 47150-0002
5. WHEN DELIVERING, THE HEART CAM SLIDER IS IN THE STATE OF THE SPRING RELEASED. (CARD EJECTED OUT POSITION).
6. SLOT DESIGN BASED ON EXPRESS CARD ASSOC. REV.A.
7. EXPRESSCARD SLOT TO BE COMPATIBLE BOTH EXPRESSCARD/34 AND /54.



NEW RELEASE	2005/07/25
EC NO: SH2006-0040	2005/07/26
DRWN: LBAO	2005/07/26
CHKD:	2005/07/26
APPR: YTYAP	2005/07/26

QUALITY SYMBOLS	DESCRIPTION
▽=0	
∇=0	

GENERAL TOLERANCES (UNLESS SPECIFIED)	DIMENSION STYLE
	MM ONLY
	SCALE
	1:1
	DESIGN UNITS
	METRIC
	THIRD ANGLE PROJECTION
	DRAWN BY
	R. BIAN
	DATE
	2004/11/24
	CHECKED BY
	DATE
	APPROVED BY
	DATE
	MATERIAL NO.
	SEE TABLE
	DOCUMENT NO.
	SD-47150-001
	SHEET NO.
	1 OF 4
	SIZE
	A3
	DRAFT WHERE APPLICABLE MUST REMAIN WITHIN DIMENSIONS
	THIS DRAWING CONTAINS INFORMATION THAT IS PROPRIETARY TO MOLEX INCORPORATED AND SHOULD NOT BE USED WITHOUT WRITTEN PERMISSION

TITLE	EXPRESSCARD SLOT WITH PUSH-PUSH MECHANISM TOP MOUNT
MATERIAL NO.	SEE TABLE
DOCUMENT NO.	SD-47150-001
SHEET NO.	1 OF 4
SIZE	A3
THIS DRAWING CONTAINS INFORMATION THAT IS PROPRIETARY TO MOLEX INCORPORATED AND SHOULD NOT BE USED WITHOUT WRITTEN PERMISSION	

SCALE	1:1
DESIGN UNITS	METRIC
THIRD ANGLE PROJECTION	
TITLE	EXPRESSCARD SLOT WITH PUSH-PUSH MECHANISM TOP MOUNT
MATERIAL NO.	SEE TABLE
DOCUMENT NO.	SD-47150-001
SHEET NO.	1 OF 4
SIZE	A3
THIS DRAWING CONTAINS INFORMATION THAT IS PROPRIETARY TO MOLEX INCORPORATED AND SHOULD NOT BE USED WITHOUT WRITTEN PERMISSION	

10 9 8 7 6 5 4 3 2 1

F

E

D

C

B

A

F

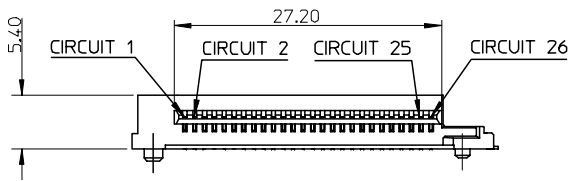
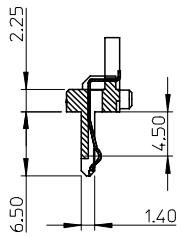
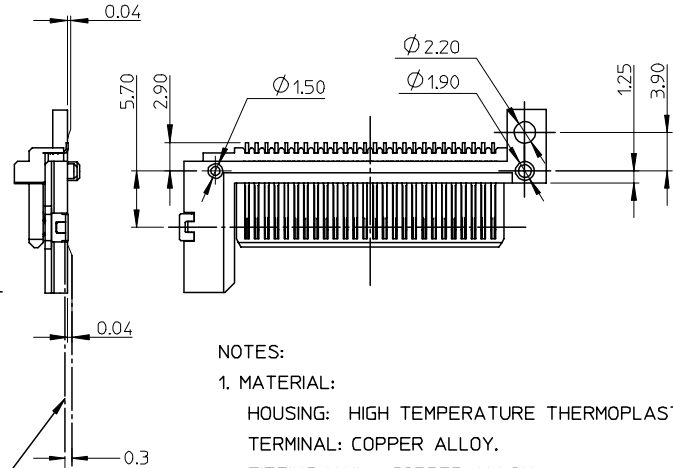
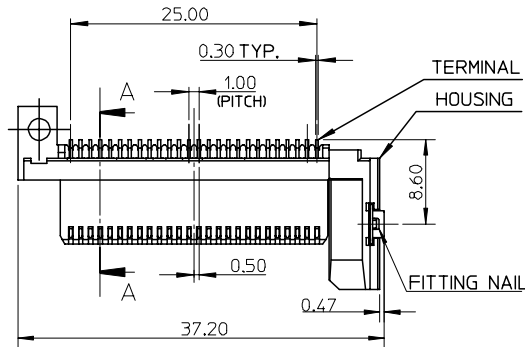
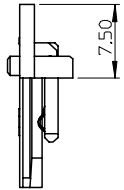
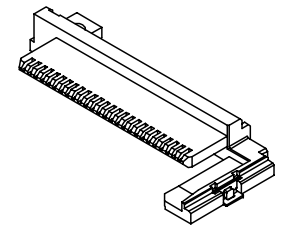
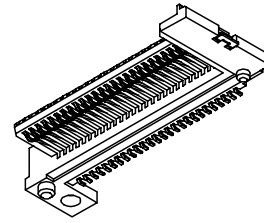
E

D

C

B

A



NOTES:

1. MATERIAL:

HOUSING: HIGH TEMPERATURE THERMOPLASTIC
TERMINAL: COPPER ALLOY.
FITTING NAIL : COPPER ALLOY.

2. FINISH:

TERMINAL: SELECTIVE GOLD(AU) IN CONTACT AREA.
THICKNESS: 0.3 MICROMETER MIN
SELECTIVE PURE TIN IN SOLDER TAIL AREA.
THICKNESS: 3 MICROMETER MIN
UNDERPLATING : NICKEL(NI) OVERALL

3.COPLANARITY AT SOLDER TAIL TO BE 0.1mm MAX.

4.PRODUCT SPEC. REFERS TO PS-47202-001

5.APPLICABLE EXPRESS CARD SLOT: 47150-0003/47150-0004

SECTION A-A

NEW RELEASE	2005/07/25
EC NO: SH2006-0040	2005/07/26
DRWN: LBAO	2005/07/26
CHKD:	2005/07/26
APPR: YTYAP	2005/07/26

QUALITY SYMBOLS	DESCRIPTION
▽=0	
∇=0	

GENERAL TOLERANCES (UNLESS SPECIFIED)	
	DIMENSION STYLE MM ONLY
	SCALE 2:1
	DESIGN UNITS METRIC
	THIRD ANGLE PROJECTION
4 PLACES	± ---
3 PLACES	± ---
2 PLACES	± 0.25
1 PLACE	± 0.25
ANGULAR ± 3 °	
DRAFT WHERE APPLICABLE MUST REMAIN WITHIN DIMENSIONS	

DRAWN BY R. BIAN	DATE 2004/11/24
CHECKED BY	DATE
APPROVED BY	DATE
MATERIAL NO. 47150-0002	DOCUMENT NO. SD-47150-001
SIZE A3	THIS DRAWING CONTAINS INFORMATION THAT IS PROPRIETARY TO MOLEX INCORPORATED AND SHOULD NOT BE USED WITHOUT WRITTEN PERMISSION

TITLE EXPRESSCARD SLOT WITH PUSH-PUSH MECHANISM TOP MOUNT	
MOLEX INCORPORATED	
SHEET NO. 2 OF 4	

9 8 7 6 5 4 3 2 1

10 9 8 7 6 5 4 3 2 1

F

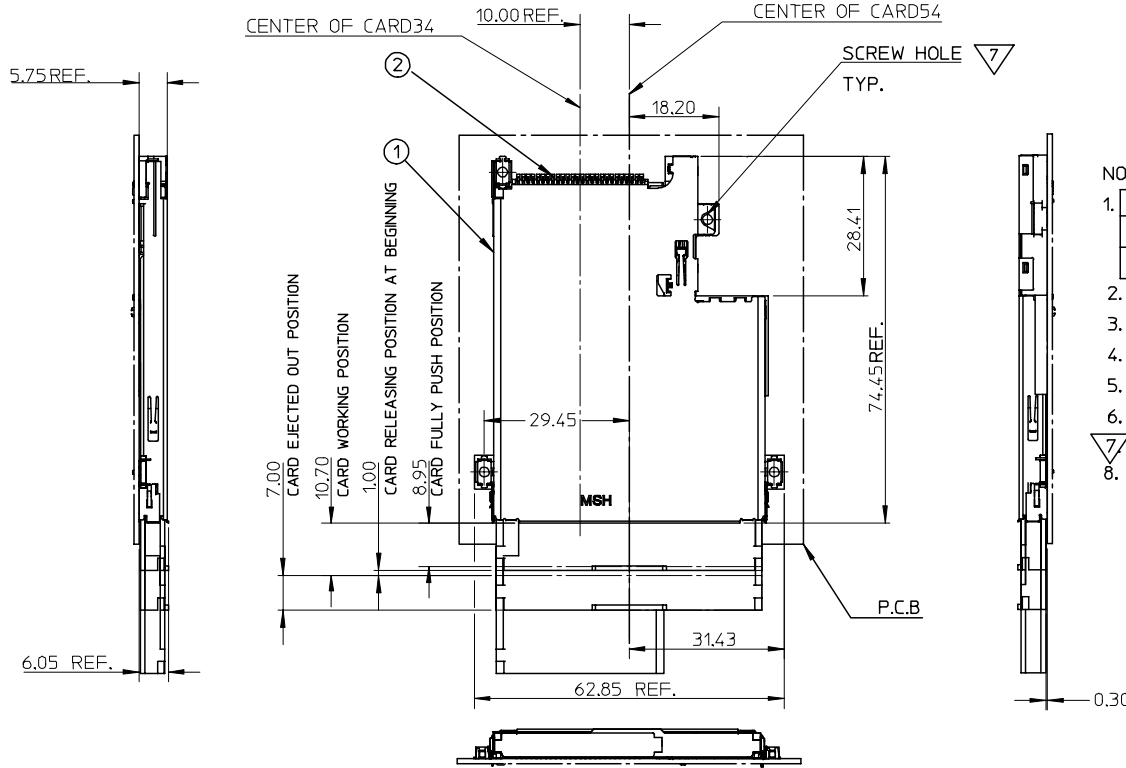
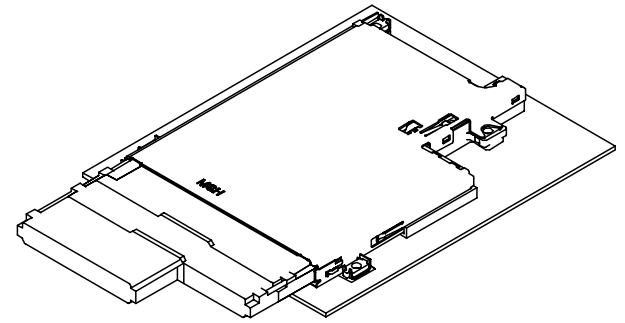
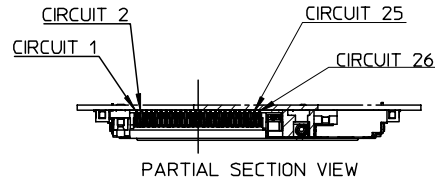
E

D

C

B

A



NOTES:

- | 1. NO. | DRAWING | MATERIAL NO. | DESCRIPTION |
|--------|-------------|-----------------------|-------------------|
| 1 | SEE SHEET 1 | 47150-0003/47150-0004 | EJECTOR MECHANISM |
| 2 | SEE SHEET 2 | 47150-0002 | CARD HEADER |
- P.C.B LAYOUT REFERS TO SHEET 4.
 - COPLANRTY OF HEADER FOR SMT SOLDER TAIL TO BE 0.1mm MAX
 - PRODUCT SPEC. REFERS TO PS-47202-001.
 - SCREW FASTENING TORQUE: 2kgf-cm.
 - TRUE POSITION IS 0.15mm MAX BETWEEN SOLDER TAILS.
 - 7 USING M2 SCREW AND NUT TO FIX
 - NON-REFLOW PROCESS FOR CARD SLOT

NEW RELEASE
 EC NO: SH2006-0040
 DRWN: LBAO 2005/07/25
 CHKD: 2005/07/26
 APPR: YIYAP 2005/07/26

QUALITY SYMBOLS
 ▽=0
 ◻=0

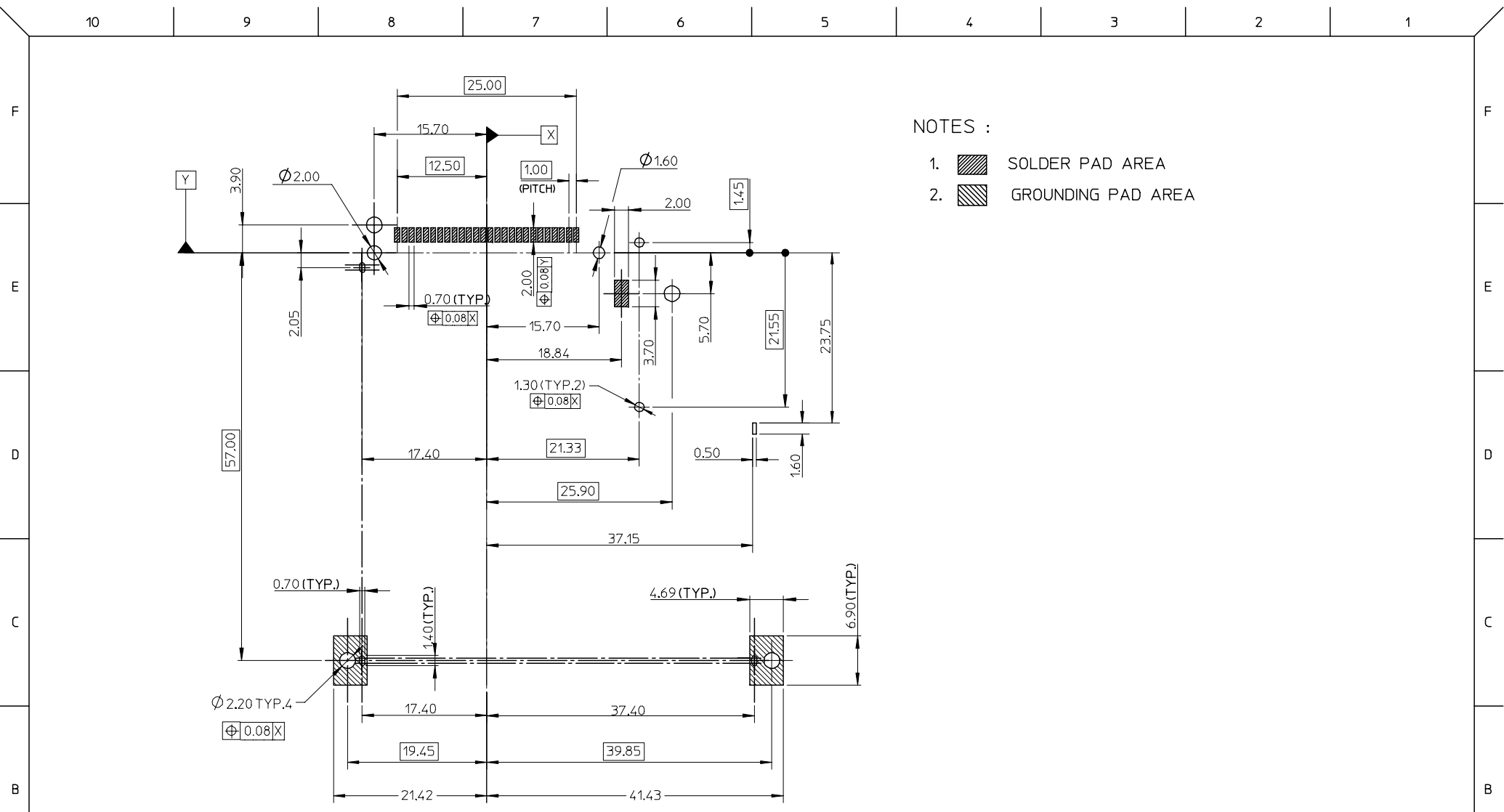
GENERAL TOLERANCES (UNLESS SPECIFIED)	
mm	INCH
4 PLACES ± ---	± ---
3 PLACES ± ---	± ---
2 PLACES ± 0.25	±
1 PLACE ± 0.25	±
ANGULAR ± 3 °	

DRAFT WHERE APPLICABLE
 MUST REMAIN WITHIN DIMENSIONS

DIMENSION STYLE	
MM ONLY	
DRAWN BY	DATE
R. BIAN	2004/11/24
CHECKED BY	DATE
APPROVED BY	DATE
MATERIAL NO.	N/A

SCALE	DESIGN UNITS	THIRD ANGLE PROJECTION	
2:1	METRIC	⊙ □	
EXPRESSCARD SLOT WITH PUSH-PUSH MECHANISM TOP MOUNT			
molex		MOLEX INCORPORATED	
DOCUMENT NO.		SHEET NO.	
SD-47150-001		3 OF 4	

9 8 7 6 5 4 3 2 1



NOTES :

- 1. SOLDER PAD AREA
- 2. GROUNDING PAD AREA

NEW RELEASE EC NO: SH2006-0040 DRWN: LBAO CHKD: APPR: YIYAP	2005/07/25 2005/07/26 2005/07/26	DESCRIPTION REV	QUALITY SYMBOLS	GENERAL TOLERANCES (UNLESS SPECIFIED)	DIMENSION STYLE	SCALE	DESIGN UNITS	THIRD ANGLE PROJECTION															
			$\nabla = 0$ $\sphericalangle = 0$	<table border="1"> <thead> <tr> <th></th> <th>mm</th> <th>INCH</th> </tr> </thead> <tbody> <tr> <td>4 PLACES</td> <td>± ---</td> <td>± ---</td> </tr> <tr> <td>3 PLACES</td> <td>± ---</td> <td>± ---</td> </tr> <tr> <td>2 PLACES</td> <td>± 0.25</td> <td>±</td> </tr> <tr> <td>1 PLACE</td> <td>± 0.25</td> <td>±</td> </tr> </tbody> </table>		mm	INCH	4 PLACES	± ---	± ---	3 PLACES	± ---	± ---	2 PLACES	± 0.25	±	1 PLACE	± 0.25	±	MM ONLY	1:1	METRIC	
				mm	INCH																		
			4 PLACES	± ---	± ---																		
3 PLACES	± ---	± ---																					
2 PLACES	± 0.25	±																					
1 PLACE	± 0.25	±																					

EXPRESSCARD SLOT WITH
 PUSH-PUSH MECHANISM
 TOP MOUNT

MOLEX INCORPORATED

DRAWN BY: R. BIAN DATE: 2004/11/24
 CHECKED BY: DATE:
 APPROVED BY: DATE:
 MATERIAL NO.: N/A
 DOCUMENT NO.: SD-47150-001
 SHEET NO.: 4 OF 4

DRAFT WHERE APPLICABLE
 MUST REMAIN
 WITHIN DIMENSIONS

THIS DRAWING CONTAINS INFORMATION THAT IS PROPRIETARY TO MOLEX
 INCORPORATED AND SHOULD NOT BE USED WITHOUT WRITTEN PERMISSION