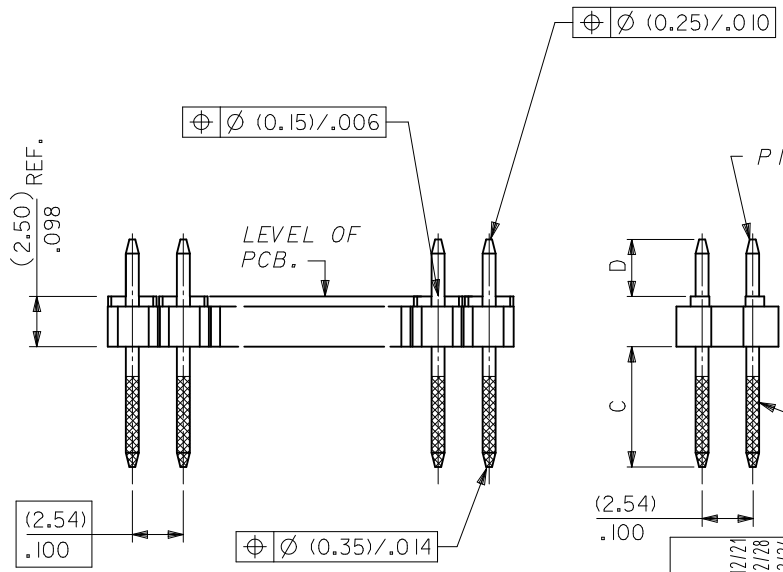


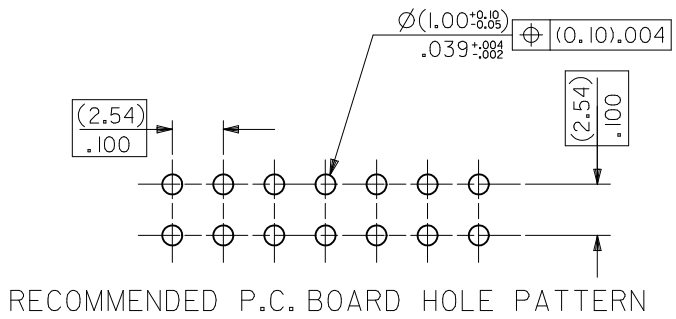
WAFER: 15% GLASS FILLED POLYESTER
TO UL 94V-0.
COLOUR: BLACK.

CKT SIZE	DIM. "A"		DIM. "B" ^(+0.20) _{+.008}		CKT SIZE	DIM. "A"		DIM. "B" ^(+0.20) _{+.008}	
2X 1			(2.54)	.100	2X21	(50.80)	2.000	(53.34)	2.100
2X 2	(2.54)	.100	(5.08)	.200	2X22	(53.34)	2.100	(55.88)	2.200
2X 3	(5.08)	.200	(7.62)	.300	2X23	(55.88)	2.200	(58.42)	2.300
2X 4	(7.62)	.300	(10.16)	.400	2X24	(58.42)	2.300	(60.96)	2.400
2X 5	(10.16)	.400	(12.70)	.500	2X25	(60.96)	2.400	(63.50)	2.500
2X 6	(12.70)	.500	(15.24)	.600	2X26	(63.50)	2.500	(66.04)	2.600
2X 7	(15.24)	.600	(17.78)	.700	2X27	(66.04)	2.600	(68.58)	2.700
2X 8	(17.78)	.700	(20.32)	.800	2X28	(68.58)	2.700	(71.12)	2.800
2X 9	(20.32)	.800	(22.86)	.900	2X29	(71.12)	2.800	(73.66)	2.900
2X10	(22.86)	.900	(25.40)	1.000	2X30	(73.66)	2.900	(76.20)	3.000
2X11	(25.40)	1.000	(27.94)	1.100	2X31	(76.20)	3.000	(78.74)	3.100
2X12	(27.94)	1.100	(30.48)	1.200	2X32	(78.74)	3.100	(81.28)	3.200
2X13	(30.48)	1.200	(33.02)	1.300	2X33	(81.28)	3.200	(83.82)	3.300
2X14	(33.02)	1.300	(35.56)	1.400	2X34	(83.82)	3.300	(86.36)	3.400
2X15	(35.56)	1.400	(38.10)	1.500	2X35	(86.36)	3.400	(88.90)	3.500
2X16	(38.10)	1.500	(40.64)	1.600	2X36	(88.90)	3.500	(91.44)	3.600
2X17	(40.64)	1.600	(43.18)	1.700	2X37	(91.44)	3.600	(93.98)	3.700
2X18	(43.18)	1.700	(45.72)	1.800	2X38	(93.98)	3.700	(96.52)	3.800
2X19	(45.72)	1.800	(48.26)	1.900	2X39	(96.52)	3.800	(99.06)	3.900
2X20	(48.26)	1.900	(50.80)	2.000	2X40	(99.06)	3.900	(101.60)	4.000



PINS: (0.65)/.0255 SQ.
BRASS WIRE.
PLATED AS PER
SHEETS 2 TO 6.

EXTENT OF
GOLD PLATE



- NOTES
- PLEASE REFER TO SHT 2 FOR PLATING DETAILS.
 - PLEASE REFER TO SHT 3-8 FOR DIMENSIONS C & D.
 - RECOMMENDED PCB THICKNESS 1.60MM
 - PRODUCT SPECIFICATION: PS-99020-0001

CHANGE DOC. NO EC NO: S2012-0490 DRWN:ATSE 2011/12/21 CHKD:SKANG 2011/12/28 APPR:MLONG 2012/02/24	QUALITY SYMBOLS F=0 F=0 F=0	GENERAL TOLERANCES (UNLESS SPECIFIED)		DIMENSION STYLE MM ONLY	SCALE NTS	DESIGN UNITS METRIC	THIRD ANGLE PROJECTION
		4 PLACES ± --- ± --- 3 PLACES ± --- ± --- 2 PLACES ± 0.20 ± --- 1 PLACE ± --- ± ---	mm INCH	DRAWN BY: DB DATE: 1987/07/16	TITLE: C GRID III DUAL ROW STRAIGHT PIN HEADER		
		ANGULAR ± 3 °	DRAFT WHERE APPLICABLE MUST REMAIN WITHIN DIMENSIONS	CHECKED BY: DB DATE: 1987/07/16	APPROVED BY: MLONG DATE: 2012/02/24		
		SEE TABLE	MATERIAL NO.	MOLEX INCORPORATED DOCUMENT NO. SD-90131-001	SHEET NO. 1 OF 8		

PLATING OPTIONS	PLATING DESCRIPTION
A	3.00µm MIN TIN OVER 1.27MIN NICKEL OVERALL
B	0.38µm MIN GOLD IN SELECTED AREA AND 3.00µm MIN TIN IN SELECTED AREA AND 1.30µm MIN NICKEL OVERALL
C	0.76µm MIN GOLD IN SELECTED AREA AND 3.00µm MIN TIN IN SELECTED AREA AND 1.30µm MIN NICKEL OVERALL
D	0.05-0.10µm GOLD FLASH IN SELECTED AREA AND 3.00µm MIN TIN IN SELECTED AREA AND 1.30µm MIN NICKEL OVERALL
E	0.38µm MIN GOLD IN SELECTED AREA (2 SIDES) AND 3.00µm MIN TIN IN SELECTED AREA AND 1.30µm MIN NICKEL OVERALL
F	0.76µm MIN GOLD IN SELECTED AREA (2 SIDES) AND 3.00µm MIN TIN IN SELECTED AREA AND 1.30µm MIN NICKEL OVERALL
G	0.05-0.10µm GOLD FLASH IN SELECTED AREA (2 SIDES) AND 3.00µm MIN TIN IN SELECTED AREA AND 1.30µm MIN NICKEL OVERALL

CHANGE DOC. NO EC NO: S2012-0490 DRWN:ATSEE 2011/12/21 CHKD:SKANG 2011/12/28 APPR:MLONG 2012/02/24	REV DESCRIPTION 0	QUALITY SYMBOLS	GENERAL TOLERANCES (UNLESS SPECIFIED)	DIMENSION STYLE	SCALE	DESIGN UNITS	THIRD ANGLE PROJECTION	
		$F_A=0$ $F_C=0$ $F_P=0$	mm INCH 4 PLACES ± --- ± --- 3 PLACES ± --- ± --- 2 PLACES ± 0.20 ± --- 1 PLACE ± --- ± --- ANGULAR ± 3 °	MM ONLY	NTS	METRIC	DRAWN BY DATE DB 1987/07/16 CHECKED BY DATE DB 1987/07/16 APPROVED BY DATE MLONG 2012/02/24	TITLE C GRID III DUAL ROW STRAIGHT PIN HEADER
		DRAFT WHERE APPLICABLE MUST REMAIN WITHIN DIMENSIONS	SEE TABLE	MATERIAL NO. DOCUMENT NO.	MOLEX INCORPORATED SD-90131-001	SHEET NO. 2 OF 8		
		SIZE A3 THIS DRAWING CONTAINS INFORMATION THAT IS PROPRIETARY TO MOLEX INCORPORATED AND SHOULD NOT BE USED WITHOUT WRITTEN PERMISSION						

10 9 8 7 6 5 4 3 2 1

CIRCUIT SIZE	PLATING TYPE A	PLATING TYPE E	PLATING TYPE F
	PART NO.	PART NO.	PART NO.
2 X 1	90131-0121	90131-0761	90131-0921
2 X 2	▲ -0122	▲ -0762	▲ -0922
2 X 3	-0123	-0763	-0923
2 X 4	-0124	-0764	-0924
2 X 5	-0125	-0765	-0925
2 X 6	-0126	-0766	-0926
2 X 7	-0127	-0767	-0927
2 X 8	-0128	-0768	-0928
2 X 9	-0129	-0769	-0929
2 X 10	-0130	-0770	-0930
2 X 11	-0131	-0771	-0931
2 X 12	-0132	-0772	-0932
2 X 13	-0133	-0773	-0933
2 X 14	-0134	-0774	-0934
2 X 15	-0135	-0775	-0935
2 X 16	-0136	-0776	-0936
2 X 17	-0137	-0777	-0937
2 X 18	-0138	-0778	-0938
2 X 19	-0139	-0779	-0939
2 X 20	-0140	-0780	-0940
2 X 21	-0141	-0781	-0941
2 X 22	-0142	-0782	-0942
2 X 23	-0143	-0783	-0943
2 X 24	-0144	-0784	-0944
2 X 25	-0145	-0785	-0945
2 X 26	-0146	-0786	-0946
2 X 27	-0147	-0787	-0947
2 X 28	-0148	-0788	-0948
2 X 29	-0149	-0789	-0949
2 X 30	-0150	-0790	-0950
2 X 31	-0151	-0791	-0951
2 X 32	-0152	-0792	-0952
2 X 33	-0153	-0793	-0953
2 X 34	-0154	-0794	-0954
2 X 35	-0155	-0795	-0955
2 X 36	-0156	-0796	-0956
2 X 37	-0157	-0797	-0957
2 X 38	-0158	-0798	-0958
2 X 39	▼ -0159	▼ -0799	▼ -0959
2 X 40	90131-0160	90131-0800	90131-0960

DIM C (+0.20 / ±.008) (6.75) .266

DIM D (+0.20 / 0.30 / ±.008 / -.012) (2.90) .114

STANDARD PRODUCTS

CHANGE DOC. NO EC NO: S2012-0490 DRWN:ATSEE 2011/12/21 CHKD:SKANG 2011/12/28 APPR:MLONG 2012/02/24	QUALITY SYMBOLS F=0 F=0 F=0	GENERAL TOLERANCES (UNLESS SPECIFIED)		DIMENSION STYLE MM ONLY		SCALE NTS	DESIGN UNITS METRIC	THIRD ANGLE PROJECTION		
			mm	INCH	DRAWN BY DB	DATE 1987/07/16	TITLE C GRID III DUAL ROW STRAIGHT PIN HEADER			
		4 PLACES	± ---	± ---	CHECKED BY DB	DATE 1987/07/16				
		3 PLACES	± ---	± ---	APPROVED BY MLONG		DATE 2012/02/24	molex MOLEX INCORPORATED		
	ANGULAR ± 3 °		MATERIAL NO. SEE TABLE		DOCUMENT NO. SD-90131-001		SHEET NO. 3 OF 8			
DRAFT WHERE APPLICABLE MUST REMAIN WITHIN DIMENSIONS		THIS DRAWING CONTAINS INFORMATION THAT IS PROPRIETARY TO MOLEX INCORPORATED AND SHOULD NOT BE USED WITHOUT WRITTEN PERMISSION								

9 8 7 6 5 4 3 2 1

CIRCUIT SIZE	PLATING TYPE A PART NO.	PLATING TYPE E PART NO.	PLATING TYPE F PART NO.
2 X 1	90131-0041	90131-0681	90131-0841
2 X 2	▲ -0042	▲ -0682	▲ -0842
2 X 3	-0043	-0683	-0843
2 X 4	-0044	-0684	-0844
2 X 5	-0045	-0685	-0845
2 X 6	-0046	-0686	-0846
2 X 7	-0047	-0687	-0847
2 X 8	-0048	-0688	-0848
2 X 9	-0049	-0689	-0849
2 X 10	-0050	-0690	-0850
2 X 11	-0051	-0691	-0851
2 X 12	-0052	-0692	-0852
2 X 13	-0053	-0693	-0853
2 X 14	-0054	-0694	-0854
2 X 15	-0055	-0695	-0855
2 X 16	-0056	-0696	-0856
2 X 17	-0057	-0697	-0857
2 X 18	-0058	-0698	-0858
2 X 19	-0059	-0699	-0859
2 X 20	-0060	-0700	-0860
2 X 21	-0061	-0701	-0861
2 X 22	-0062	-0702	-0862
2 X 23	-0063	-0703	-0863
2 X 24	-0064	-0704	-0864
2 X 25	-0065	-0705	-0865
2 X 26	-0066	-0706	-0866
2 X 27	-0067	-0707	-0867
2 X 28	-0068	-0708	-0868
2 X 29	-0069	-0709	-0869
2 X 30	-0070	-0710	-0870
2 X 31	-0071	-0711	-0871
2 X 32	-0072	-0712	-0872
2 X 33	-0073	-0713	-0873
2 X 34	-0074	-0714	-0874
2 X 35	-0075	-0715	-0875
2 X 36	-0076	-0716	-0876
2 X 37	-0077	-0717	-0877
2 X 38	-0078	-0718	-0878
2 X 39	▼ -0079	▼ -0719	▼ -0879
2 X 40	90131-0080	90131-0720	90131-0880

DIM C (+0.20) ±.008 (5.75) .226

DIM D (+0.20) ±.008 ±.012 (2.90) .114

CIRCUIT SIZE	PLATING TYPE A PART NO.	PLATING TYPE E PART NO.	PLATING TYPE F PART NO.
2 X 1	90131-0081	90131-0721	90131-0881
2 X 2	▲ -0082	▲ -0722	▲ -0882
2 X 3	-0083	-0723	-0883
2 X 4	-0084	-0724	-0884
2 X 5	-0085	-0725	-0885
2 X 6	-0086	-0726	-0886
2 X 7	-0087	-0727	-0887
2 X 8	-0088	-0728	-0888
2 X 9	-0089	-0729	-0889
2 X 10	-0090	-0730	-0890
2 X 11	-0091	-0731	-0891
2 X 12	-0092	-0732	-0892
2 X 13	-0093	-0733	-0893
2 X 14	-0094	-0734	-0894
2 X 15	-0095	-0735	-0895
2 X 16	-0096	-0736	-0896
2 X 17	-0097	-0737	-0897
2 X 18	-0098	-0738	-0898
2 X 19	-0099	-0739	-0899
2 X 20	-0100	-0740	-0900
2 X 21	-0101	-0741	-0901
2 X 22	-0102	-0742	-0902
2 X 23	-0103	-0743	-0903
2 X 24	-0104	-0744	-0904
2 X 25	-0105	-0745	-0905
2 X 26	-0106	-0746	-0906
2 X 27	-0107	-0747	-0907
2 X 28	-0108	-0748	-0908
2 X 29	-0109	-0749	-0909
2 X 30	-0110	-0750	-0910
2 X 31	-0111	-0751	-0911
2 X 32	-0112	-0752	-0912
2 X 33	-0113	-0753	-0913
2 X 34	-0114	-0754	-0914
2 X 35	-0115	-0755	-0915
2 X 36	-0116	-0756	-0916
2 X 37	-0117	-0757	-0917
2 X 38	-0118	-0758	-0918
2 X 39	▼ -0119	▼ -0759	▼ -0919
2 X 40	90131-0120	90131-0760	90131-0920

DIM C (+0.20) ±.008 (5.75) .226

DIM D (+0.25) ±.010 (4.50) .177

NON-STANDARD PRODUCTS

CHANGE DOC. NO
EC NO: S2012-0490
DRAWN/SEE 2011/12/21
CHKD:SKANG 2011/12/28
APPR:MLONG 2012/02/24

QUALITY SYMBOLS
F_A=0
F_E=0
F_F=0

GENERAL TOLERANCES (UNLESS SPECIFIED)

4 PLACES	± ---	± ---
3 PLACES	± ---	± ---
2 PLACES	± 0.20	± ---
1 PLACE	± ---	± ---

ANGULAR ± 3°

DRAFT WHERE APPLICABLE MUST REMAIN WITHIN DIMENSIONS

DIMENSION STYLE
MM ONLY

SCALE
NTS

DESIGN UNITS
METRIC

THIRD ANGLE PROJECTION

DRAWN BY
DB

DATE
1987/07/16

CHECKED BY
DB

DATE
1987/07/16

APPROVED BY
MLONG

DATE
2012/02/24

MATERIAL NO.
SEE TABLE

SIZE
A3

TITLE
C GRID III DUAL ROW STRAIGHT PIN HEADER

MOLEX MOLEX INCORPORATED

DOCUMENT NO.
SD-90131-001

SHEET NO.
4 OF 8

THIS DRAWING CONTAINS INFORMATION THAT IS PROPRIETARY TO MOLEX INCORPORATED AND SHOULD NOT BE USED WITHOUT WRITTEN PERMISSION

CIRCUIT SIZE	PLATING TYPE A PART NO.	PLATING TYPE E PART NO.	PLATING TYPE F PART NO.
2 X 1	90131-0161	90131-0801	90131-0961
2 X 2	▲ -0162	-0802	▲ -0962
2 X 3	-0163	-0803	-0963
2 X 4	-0164	-0804	-0964
2 X 5	-0165	-0805	-0965
2 X 6	-0166	-0806	-0966
2 X 7	-0167	-0807	-0967
2 X 8	-0168	-0808	-0968
2 X 9	-0169	-0809	-0969
2 X 10	-0170	-0810	-0970
2 X 11	-0171	-0811	-0971
2 X 12	-0172	-0812	-0972
2 X 13	-0173	-0813	-0973
2 X 14	-0174	-0814	-0974
2 X 15	-0175	-0815	-0975
2 X 16	-0176	-0816	-0976
2 X 17	-0177	-0817	-0977
2 X 18	-0178	-0818	-0978
2 X 19	-0179	-0819	-0979
2 X 20	-0180	-0820	-0980
2 X 21	-0181	-0821	-0981
2 X 22	-0182	-0822	-0982
2 X 23	-0183	-0823	-0983
2 X 24	-0184	-0824	-0984
2 X 25	-0185	-0825	-0985
2 X 26	-0186	-0826	-0986
2 X 27	-0187	-0827	-0987
2 X 28	-0188	-0828	-0988
2 X 29	-0189	-0829	-0989
2 X 30	-0190	-0830	-0990
2 X 31	-0191	-0831	-0991
2 X 32	-0192	-0832	-0992
2 X 33	-0193	-0833	-0993
2 X 34	-0194	-0834	-0994
2 X 35	-0195	-0835	-0995
2 X 36	-0196	-0836	-0996
2 X 37	-0197	-0837	-0997
2 X 38	-0198	-0838	-0998
2 X 39	▼ -0199	-0839	▼ -0999
2 X 40	90131-0200	90131-0840	90131-1000

DIM C
(±0.20)
±.008
(6.75)
.266

DIM D
(±0.25)
±.010
(4.50)
.177

NON-STANDARD PRODUCTS

CHANGE DOC. NO EC NO: S2012-0490 DRWN:ATSEE 2011/12/21 CHKD:SKANG 2011/12/28 APPR:MLONG 2012/02/24	QUALITY SYMBOLS	GENERAL TOLERANCES (UNLESS SPECIFIED)	DIMENSION STYLE	SCALE	DESIGN UNITS	THIRD ANGLE PROJECTION
	$F_A = 0$ $F_B = 0$ $F_C = 0$	mm INCH	MM ONLY	NTS	METRIC	
		4 PLACES ± --- ± --- 3 PLACES ± --- ± --- 2 PLACES ± 0.20 ± --- 1 PLACE ± --- ± --- ANGULAR ± 3°	DRAWN BY DATE DB 1987/07/16 CHECKED BY DATE DB 1987/07/16 APPROVED BY DATE MLONG 2012/02/24	TITLE C GRID III DUAL ROW STRAIGHT PIN HEADER		
		DRAFT WHERE APPLICABLE MUST REMAIN WITHIN DIMENSIONS	MATERIAL NO. SEE TABLE	MOLEX INCORPORATED DOCUMENT NO. SD-90131-001		SHEET NO. 5 OF 8

THIS DRAWING CONTAINS INFORMATION THAT IS PROPRIETARY TO MOLEX INCORPORATED AND SHOULD NOT BE USED WITHOUT WRITTEN PERMISSION

	10	9	8	7	6	5	4	3	2	1		
		CIRCUIT SIZE	PLATING TYPE B PART NO.	PLATING TYPE C PART NO.	PLATING TYPE D PART NO.	PLATING TYPE G PART NO.	CIRCUIT SIZE	PLATING TYPE B PART NO.	PLATING TYPE C PART NO.	PLATING TYPE D PART NO.	PLATING TYPE G PART NO.	
F		2 X 1	90131-0281	90131-0441	90131-0601	90131-1081	2 X 1	90131-0201	90131-0361	90131-0521	90131-1001	F
		2 X 2	▲ -0282	▲ -0442	▲ -0602	▲ -1082	2 X 2	▲ -0202	▲ -0362	▲ -0522	▲ -1002	
		2 X 3	-0283	-0443	-0603	-1083	2 X 3	-0203	-0363	-0523	-1003	
		2 X 4	-0284	-0444	-0604	-1084	2 X 4	-0204	-0364	-0524	-1004	
		2 X 5	-0285	-0445	-0605	-1085	2 X 5	-0205	-0365	-0525	-1005	
		2 X 6	-0286	-0446	-0606	-1086	2 X 6	-0206	-0366	-0526	-1006	
		2 X 7	-0287	-0447	-0607	-1087	2 X 7	-0207	-0367	-0527	-1007	
		2 X 8	-0288	-0448	-0608	-1088	2 X 8	-0208	-0368	-0528	-1008	
		2 X 9	-0289	-0449	-0609	-1089	2 X 9	-0209	-0369	-0529	-1009	
E		2 X 10	-0290	-0450	-0610	-1090	2 X 10	-0210	-0370	-0530	-1010	E
		2 X 11	-0291	-0451	-0611	-1091	2 X 11	-0211	-0371	-0531	-1011	
		2 X 12	-0292	-0452	-0612	-1092	2 X 12	-0212	-0372	-0532	-1012	
		2 X 13	-0293	-0453	-0613	-1093	2 X 13	-0213	-0373	-0533	-1013	
		2 X 14	-0294	-0454	-0614	-1094	2 X 14	-0214	-0374	-0534	-1014	
		2 X 15	-0295	-0455	-0615	-1095	2 X 15	-0215	-0375	-0535	-1015	
		2 X 16	-0296	-0456	-0616	-1096	2 X 16	-0216	-0376	-0536	-1016	
		2 X 17	-0297	-0457	-0617	-1097	2 X 17	-0217	-0377	-0537	-1017	
		2 X 18	-0298	-0458	-0618	-1098	2 X 18	-0218	-0378	-0538	-1018	
		2 X 19	-0299	-0459	-0619	-1099	2 X 19	-0219	-0379	-0539	-1019	
D		2 X 20	-0300	-0460	-0620	-1100	2 X 20	-0220	-0380	-0540	-1020	D
		2 X 21	-0301	-0461	-0621	-1101	2 X 21	-0221	-0381	-0541	-1021	
		2 X 22	-0302	-0462	-0622	-1102	2 X 22	-0222	-0382	-0542	-1022	
		2 X 23	-0303	-0463	-0623	-1103	2 X 23	-0223	-0383	-0543	-1023	
		2 X 24	-0304	-0464	-0624	-1104	2 X 24	-0224	-0384	-0544	-1024	
		2 X 25	-0305	-0465	-0625	-1105	2 X 25	-0225	-0385	-0545	-1025	
		2 X 26	-0306	-0466	-0626	-1106	2 X 26	-0226	-0386	-0546	-1026	
		2 X 27	-0307	-0467	-0627	-1107	2 X 27	-0227	-0387	-0547	-1027	
		2 X 28	-0308	-0468	-0628	-1108	2 X 28	-0228	-0388	-0548	-1028	
		2 X 29	-0309	-0469	-0629	-1109	2 X 29	-0229	-0389	-0549	-1029	
C		2 X 30	-0310	-0470	-0630	-1110	2 X 30	-0230	-0390	-0550	-1030	C
		2 X 31	-0311	-0471	-0631	-1111	2 X 31	-0231	-0391	-0551	-1031	
		2 X 32	-0312	-0472	-0632	-1112	2 X 32	-0232	-0392	-0552	-1032	
		2 X 33	-0313	-0473	-0633	-1113	2 X 33	-0233	-0393	-0553	-1033	
		2 X 34	-0314	-0474	-0634	-1114	2 X 34	-0234	-0394	-0554	-1034	
		2 X 35	-0315	-0475	-0635	-1115	2 X 35	-0235	-0395	-0555	-1035	
		2 X 36	-0316	-0476	-0636	-1116	2 X 36	-0236	-0396	-0556	-1036	
		2 X 37	-0317	-0477	-0637	-1117	2 X 37	-0237	-0397	-0557	-1037	
		2 X 38	-0318	-0478	-0638	-1118	2 X 38	-0238	-0398	-0558	-1038	
B		2 X 39	▼ -0319	▼ -0479	▼ -0639	▼ -1119	2 X 39	▼ -0239	▼ -0399	▼ -0559	▼ -1039	B
		2 X 40	90131-0320	90131-0480	90131-0640	90131-1120	2 X 40	90131-0240	90131-0400	90131-0560	90131-1040	

DIM C (+0.20/-0.008) (6.75) .266

DIM D (+0.30/-0.012) (2.90) .114

DIM C (+0.20/-0.008) (5.75) .226

DIM D (+0.30/-0.012) (2.90) .114

**NON-STANDARD PRODUCTS
NOT FOR GENERAL RELEASE**

CHANGE DOC. NO EC NO: S2012-0490	2011/12/21	DRWINATSEE	2011/12/28	CHKD:SKANG	2012/02/24	APPR:MLONG	DESCRIPTION
QUALITY SYMBOLS	▽ _A =0	▽ _B =0	▽ _C =0	▽ _D =0	▽ _E =0	▽ _F =0	
REV	0						

GENERAL TOLERANCES (UNLESS SPECIFIED)	mm	INCH
4 PLACES	± ---	± ---
3 PLACES	± ---	± ---
2 PLACES	± 0.20	± ---
1 PLACE	± ---	± ---
ANGULAR ± 3 °		
DRAFT WHERE APPLICABLE MUST REMAIN WITHIN DIMENSIONS		

DIMENSION STYLE MM ONLY	
DRAWN BY	DATE
DB	1987/07/16
CHECKED BY	DATE
DB	1987/07/16
APPROVED BY	DATE
MLONG	2012/02/24
MATERIAL NO.	SEE TABLE
SIZE	A3

SCALE NTS	DESIGN UNITS METRIC	THIRD ANGLE PROJECTION
TITLE C GRID III DUAL ROW STRAIGHT PIN HEADER		
MOLEX INCORPORATED		SHEET NO. 6 OF 8
DOCUMENT NO. SD-90131-001		
THIS DRAWING CONTAINS INFORMATION THAT IS PROPRIETARY TO MOLEX INCORPORATED AND SHOULD NOT BE USED WITHOUT WRITTEN PERMISSION		

CIRCUIT SIZE	PLATING TYPE B PART NO.	PLATING TYPE C PART NO.	PLATING TYPE D PART NO.	PLATING TYPE G PART NO.
2 X 1	90131-0241	90131-0401	90131-0561	90131-1041
2 X 2	▲ -0242	▲ -0402	▲ -0562	▲ -1042
2 X 3	▲ -0243	▲ -0403	▲ -0563	▲ -1043
2 X 4	▲ -0244	▲ -0404	▲ -0564	▲ -1044
2 X 5	▲ -0245	▲ -0405	▲ -0565	▲ -1045
2 X 6	▲ -0246	▲ -0406	▲ -0566	▲ -1046
2 X 7	▲ -0247	▲ -0407	▲ -0567	▲ -1047
2 X 8	▲ -0248	▲ -0408	▲ -0568	▲ -1048
2 X 9	▲ -0249	▲ -0409	▲ -0569	▲ -1049
2 X 10	▲ -0250	▲ -0410	▲ -0570	▲ -1050
2 X 11	▲ -0251	▲ -0411	▲ -0571	▲ -1051
2 X 12	▲ -0252	▲ -0412	▲ -0572	▲ -1052
2 X 13	▲ -0253	▲ -0413	▲ -0573	▲ -1053
2 X 14	▲ -0254	▲ -0414	▲ -0574	▲ -1054
2 X 15	▲ -0255	▲ -0415	▲ -0575	▲ -1055
2 X 16	▲ -0256	▲ -0416	▲ -0576	▲ -1056
2 X 17	▲ -0257	▲ -0417	▲ -0577	▲ -1057
2 X 18	▲ -0258	▲ -0418	▲ -0578	▲ -1058
2 X 19	▲ -0259	▲ -0419	▲ -0579	▲ -1059
2 X 20	▲ -0260	▲ -0420	▲ -0580	▲ -1060
2 X 21	▲ -0261	▲ -0421	▲ -0581	▲ -1061
2 X 22	▲ -0262	▲ -0422	▲ -0582	▲ -1062
2 X 23	▲ -0263	▲ -0423	▲ -0583	▲ -1063
2 X 24	▲ -0264	▲ -0424	▲ -0584	▲ -1064
2 X 25	▲ -0265	▲ -0425	▲ -0585	▲ -1065
2 X 26	▲ -0266	▲ -0426	▲ -0586	▲ -1066
2 X 27	▲ -0267	▲ -0427	▲ -0587	▲ -1067
2 X 28	▲ -0268	▲ -0428	▲ -0588	▲ -1068
2 X 29	▲ -0269	▲ -0429	▲ -0589	▲ -1069
2 X 30	▲ -0270	▲ -0430	▲ -0590	▲ -1070
2 X 31	▲ -0271	▲ -0431	▲ -0591	▲ -1071
2 X 32	▲ -0272	▲ -0432	▲ -0592	▲ -1072
2 X 33	▲ -0273	▲ -0433	▲ -0593	▲ -1073
2 X 34	▲ -0274	▲ -0434	▲ -0594	▲ -1074
2 X 35	▲ -0275	▲ -0435	▲ -0595	▲ -1075
2 X 36	▲ -0276	▲ -0436	▲ -0596	▲ -1076
2 X 37	▲ -0277	▲ -0437	▲ -0597	▲ -1077
2 X 38	▲ -0278	▲ -0438	▲ -0598	▲ -1078
2 X 39	▲ -0279	▲ -0439	▲ -0599	▲ -1079
2 X 40	90131-0280	90131-0440	90131-0600	90131-1080

DIM C (±0.20) ±.008 (5.75) .226

DIM D (±0.25) ±.010 (4.50) .177

CIRCUIT SIZE	PLATING TYPE B PART NO.	PLATING TYPE C PART NO.	PLATING TYPE D PART NO.	PLATING TYPE G PART NO.
2 X 1	90131-0321	90131-0481	90131-0641	90131-1121
2 X 2	▲ -0322	▲ -0482	▲ -0642	▲ -1122
2 X 3	▲ -0323	▲ -0483	▲ -0643	▲ -1123
2 X 4	▲ -0324	▲ -0484	▲ -0644	▲ -1124
2 X 5	▲ -0325	▲ -0485	▲ -0645	▲ -1125
2 X 6	▲ -0326	▲ -0486	▲ -0646	▲ -1126
2 X 7	▲ -0327	▲ -0487	▲ -0647	▲ -1127
2 X 8	▲ -0328	▲ -0488	▲ -0648	▲ -1128
2 X 9	▲ -0329	▲ -0489	▲ -0649	▲ -1129
2 X 10	▲ -0330	▲ -0490	▲ -0650	▲ -1130
2 X 11	▲ -0331	▲ -0491	▲ -0651	▲ -1131
2 X 12	▲ -0332	▲ -0492	▲ -0652	▲ -1132
2 X 13	▲ -0333	▲ -0493	▲ -0653	▲ -1133
2 X 14	▲ -0334	▲ -0494	▲ -0654	▲ -1134
2 X 15	▲ -0335	▲ -0495	▲ -0655	▲ -1135
2 X 16	▲ -0336	▲ -0496	▲ -0656	▲ -1136
2 X 17	▲ -0337	▲ -0497	▲ -0657	▲ -1137
2 X 18	▲ -0338	▲ -0498	▲ -0658	▲ -1138
2 X 19	▲ -0339	▲ -0499	▲ -0659	▲ -1139
2 X 20	▲ -0340	▲ -0500	▲ -0660	▲ -1140
2 X 21	▲ -0341	▲ -0501	▲ -0661	▲ -1141
2 X 22	▲ -0342	▲ -0502	▲ -0662	▲ -1142
2 X 23	▲ -0343	▲ -0503	▲ -0663	▲ -1143
2 X 24	▲ -0344	▲ -0504	▲ -0664	▲ -1144
2 X 25	▲ -0345	▲ -0505	▲ -0665	▲ -1145
2 X 26	▲ -0346	▲ -0506	▲ -0666	▲ -1146
2 X 27	▲ -0347	▲ -0507	▲ -0667	▲ -1147
2 X 28	▲ -0348	▲ -0508	▲ -0668	▲ -1148
2 X 29	▲ -0349	▲ -0509	▲ -0669	▲ -1149
2 X 30	▲ -0350	▲ -0510	▲ -0670	▲ -1150
2 X 31	▲ -0351	▲ -0511	▲ -0671	▲ -1151
2 X 32	▲ -0352	▲ -0512	▲ -0672	▲ -1152
2 X 33	▲ -0353	▲ -0513	▲ -0673	▲ -1153
2 X 34	▲ -0354	▲ -0514	▲ -0674	▲ -1154
2 X 35	▲ -0355	▲ -0515	▲ -0675	▲ -1155
2 X 36	▲ -0356	▲ -0516	▲ -0676	▲ -1156
2 X 37	▲ -0357	▲ -0517	▲ -0677	▲ -1157
2 X 38	▲ -0358	▲ -0518	▲ -0678	▲ -1158
2 X 39	▲ -0359	▲ -0519	▲ -0679	▲ -1159
2 X 40	90131-0360	90131-0520	90131-0680	90131-1160

DIM C (±0.20) ±.008 (6.75) .266

DIM D (±0.25) ±.010 (4.50) .177

**NON-STANDARD PRODUCTS
NOT FOR GENERAL RELEASE**

CHANGE DOC. NO EC NO: S2012-0490	2011/12/21	QUALITY SYMBOLS
DRW:NAITSEE	2011/12/28	▽=0
CHKD:SKANG	2012/02/24	▽=0
APPR:MLONG		▽=0
REV	DESCRIPTION	
0		

GENERAL TOLERANCES (UNLESS SPECIFIED)	
4 PLACES	± --- ± ---
3 PLACES	± --- ± ---
2 PLACES	± 0.20 ± ---
1 PLACE	± --- ± ---
ANGULAR ± 3 °	
DRAFT WHERE APPLICABLE MUST REMAIN WITHIN DIMENSIONS	

DIMENSION STYLE	
MM ONLY	
DRAWN BY	DATE
DB	1987/07/16
CHECKED BY	DATE
DB	1987/07/16
APPROVED BY	DATE
MLONG	2012/02/24
MATERIAL NO.	DOCUMENT NO.
SEE TABLE	SD-90131-001
SIZE A3	

SCALE NTS	DESIGN UNITS METRIC	THIRD ANGLE PROJECTION
TITLE		
C GRID III DUAL ROW STRAIGHT PIN HEADER		
MOLEX INCORPORATED		
SHEET NO.		7 OF 8
THIS DRAWING CONTAINS INFORMATION THAT IS PROPRIETARY TO MOLEX INCORPORATED AND SHOULD NOT BE USED WITHOUT WRITTEN PERMISSION		

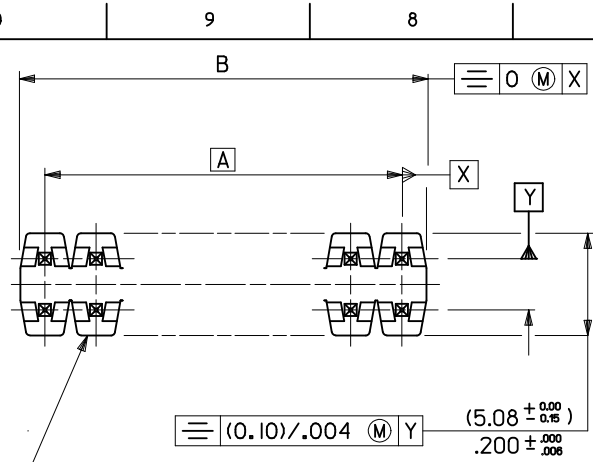
10 9 8 7 6 5 4 3 2 1

CIRCUIT SIZE	PLATING TYPE A PART NO.	PIN PART NUMBER	WAFER PART NUMBER	DIM C ^(±0.20) ±.008	DIM D ^(±0.30) ±.008 -.012
2 X 6	90131-3126	90129-2008	90131-0040	(14.60) .575	(2.38) .094
2 X 36	90131-3128	90129-2008	90131-0040	(14.60) .575	(2.38) .094
2 X 40	90131-3127	90129-2008	90131-0040	(14.60) .575	(2.38) .094

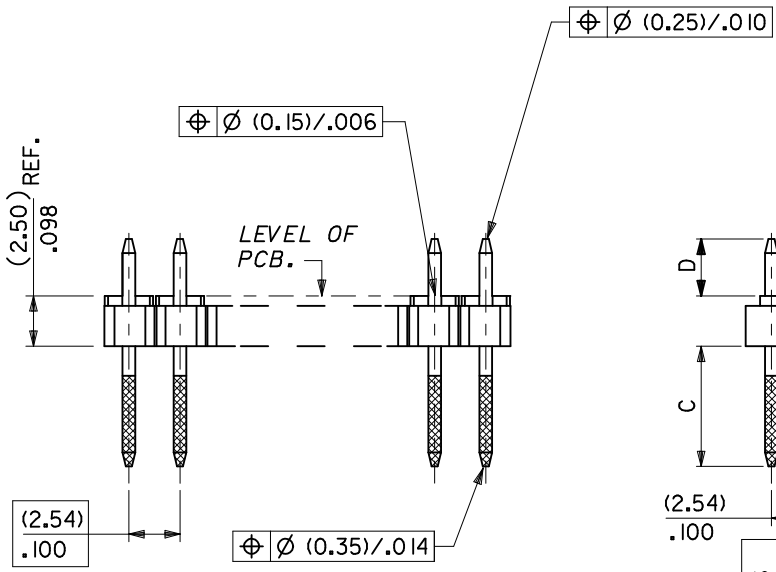
STANDARD PRODUCTS

CHANGE DOC. NO EC NO: S2012-0490 DRW:ATSEE 2011/12/21 CHKD:SKANG 2011/12/28 APPR:MLONG 2012/02/24	QUALITY SYMBOLS ▽=0 ▽=0 ▽=0	GENERAL TOLERANCES (UNLESS SPECIFIED)		DIMENSION STYLE MM ONLY		SCALE NTS	DESIGN UNITS METRIC	THIRD ANGLE PROJECTION	
			mm	INCH	DRAWN BY	DATE	TITLE C GRID III DUAL ROW STRAIGHT PIN HEADER		
		4 PLACES	± ---	± ---	DB	1987/07/16			
		3 PLACES	± ---	± ---	CHECKED BY	DATE	MOLEX INCORPORATED DOCUMENT NO. SD-90131-001		
2 PLACES	± 0.20	± ---	DB	1987/07/16					
1 PLACE	± ---	± ---	APPROVED BY	DATE	SHEET NO. 8 OF 8				
ANGULAR ± 3 °		MATERIAL NO.	MLONG	2012/02/24					
DRAFT WHERE APPLICABLE MUST REMAIN WITHIN DIMENSIONS		SEE TABLE		THIS DRAWING CONTAINS INFORMATION THAT IS PROPRIETARY TO MOLEX INCORPORATED AND SHOULD NOT BE USED WITHOUT WRITTEN PERMISSION					

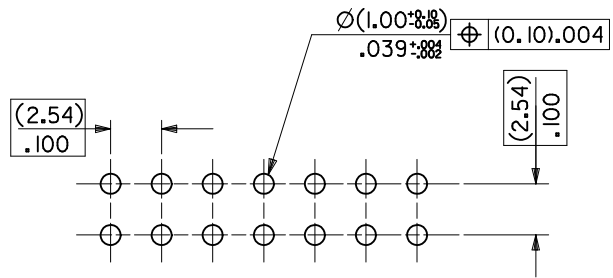
9 8 7 6 5 4 3 2 1



CKT SIZE	DIM." A"	DIM." B" ^(+0.20) _{±.008}	CKT SIZE	DIM." A"	DIM." B" ^(+0.20) _{±.008}
2X 1		(2.54)	2X21	(50.80)	2.000
2X 2	(2.54)	.100	2X22	(53.34)	2.100
2X 3	(5.08)	.200	2X23	(55.88)	2.200
2X 4	(7.62)	.300	2X24	(58.42)	2.300
2X 5	(10.16)	.400	2X25	(60.96)	2.400
2X 6	(12.70)	.500	2X26	(63.50)	2.500
2X 7	(15.24)	.600	2X27	(66.04)	2.600
2X 8	(17.78)	.700	2X28	(68.58)	2.700
2X 9	(20.32)	.800	2X29	(71.12)	2.800
2X10	(22.86)	.900	2X30	(73.66)	2.900
2X11	(25.40)	1.000	2X31	(76.20)	3.000
2X12	(27.94)	1.100	2X32	(78.74)	3.100
2X13	(30.48)	1.200	2X33	(81.28)	3.200
2X14	(33.02)	1.300	2X34	(83.82)	3.300
2X15	(35.56)	1.400	2X35	(86.36)	3.400
2X16	(38.10)	1.500	2X36	(88.90)	3.500
2X17	(40.64)	1.600	2X37	(91.44)	3.600
2X18	(43.18)	1.700	2X38	(93.98)	3.700
2X19	(45.72)	1.800	2X39	(96.52)	3.800
2X20	(48.26)	1.900	2X40	(99.06)	3.900
				(101.60)	4.000



NOTES
 1. FOR ASSY NUMBERS WITH FINISH OPTIONS AND DIM'S C & D SEE SHEETS 2 TO 7.



7	C
6	H
5	H
4	H
3	H
2	H
1	M

RECOMMENDED P.C. BOARD HOLE PATTERN

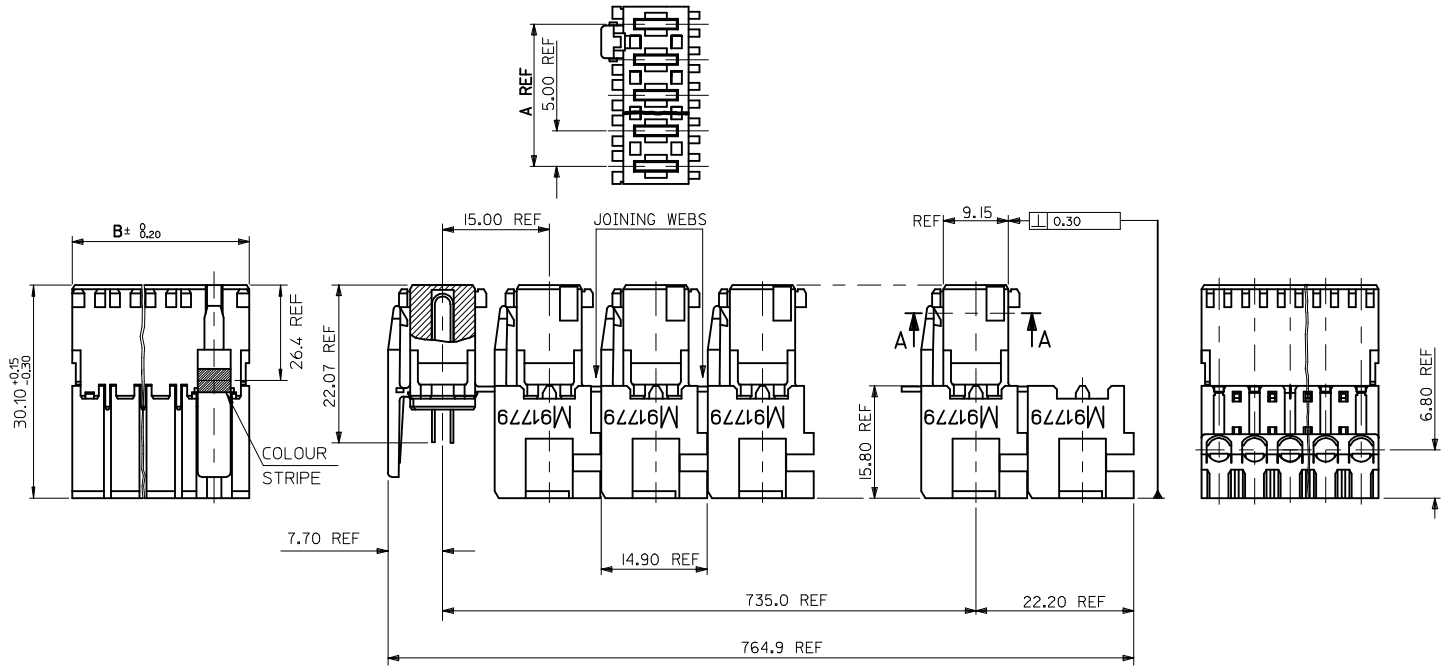
NOTES
 2. RECOMMENDED PCB THICKNESS 1.6MM
 3. PRODUCT SPECIFICATION: PS-99020-0001

ADDED NOTES	QUALITY SYMBOLS
EC NO: E2008-0337	▽ =
DRWN: K IERMAN 2008/02/14	◁ =
CHKD: 2008/02/15	
APPR: BMAGUIRE 2008/02/15	
REV	DESCRIPTION
N	

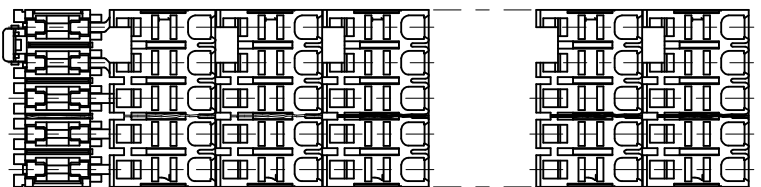
GENERAL TOLERANCES (UNLESS SPECIFIED)	DIMENSION STYLE	
	mm	INCH
4 PLACES	± ---	± ---
3 PLACES	± ---	± ---
2 PLACES	± ---	± ---
1 PLACE	± ---	± ---
ANGULAR ± ---°		

DIMENSION STYLE		SCALE	DESIGN UNITS	THIRD ANGLE PROJECTION
MM ONLY		4:1	METRIC	☉
DRAWN BY	DATE	TITLE		
DB	16/7/87	C GRID III DUAL ROW STRAIGHT PIN HEADER		
CHECKED BY	DATE	MOLEX INCORPORATED		
APPROVED BY	DATE	MATERIAL NO. SEE CHART		
MATERIAL NO.		DOCUMENT NO.	SHEET NO.	
		SDA-90131	1 OF 7	

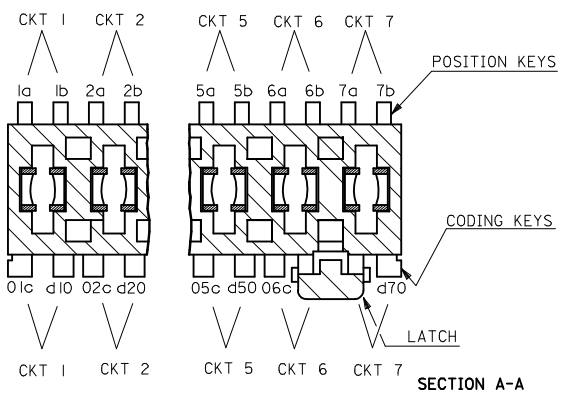
DRAFT WHERE APPLICABLE MUST REMAIN WITHIN DIMENSIONS		THIS DRAWING CONTAINS INFORMATION THAT IS PROPRIETARY TO MOLEX INCORPORATED AND SHOULD NOT BE USED WITHOUT WRITTEN PERMISSION	
SIZE	A3		



CKT SIZE	A	B
2	5.00	9.90
3	10.00	14.90
4	15.00	19.90



- NOTES:
- MATERIALS:
HOUSING: PA 6, UL94 V-2
COLOUR: SEE SHEET 2
TERMINAL: PHOSPHOR BRONZE, (0.50)/.020 THICK REF
PLATING: (2 µm)/79 µm MIN SILVER IN CONTACT AREA
(0.10 µm)/.004 µm MIN SILVER FLASH ALLOWER
 - PRODUCT CONFORMS TO SPECIFICATION PS-99020-0037
 - ACCEPTS CABLE, PER ES-99036-0010
 - SEE SUBSEQUENT SHEETS FOR PART NUMBERS SHOWING THE VARIOUS CODING, KEYING AND LATCHING OPTIONS.
 - PACKAGING SPECIFICATION PK-90833-001
 - APPLICATION SPECIFICATION AS-99033-0004

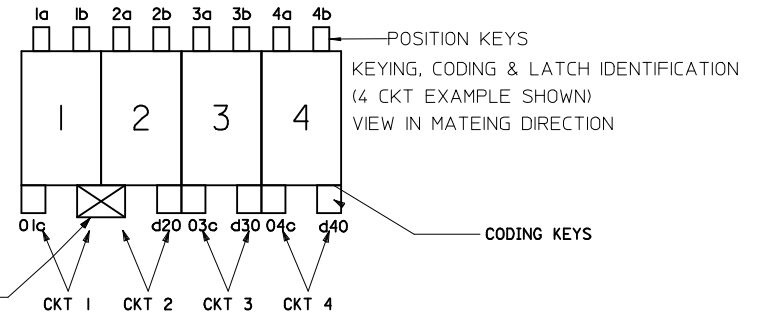


KEYING, CODING, & LATCH IDENTIFICATION
(7 CKT EXAMPLE SHOWN)

ADDED PART NUMBERS EC NO: IFC2014-4233 DRWN: MONAHAN 2014/01/06 CHKD: APPR: STIGLITZ 2014/01/20	QUALITY SYMBOLS 	GENERAL TOLERANCES (UNLESS SPECIFIED)		DIMENSION STYLE MM ONLY	SCALE 1:1	DESIGN UNITS METRIC	THIRD ANGLE PROJECTION
		4 PLACES ± --- ± --- 3 PLACES ± --- ± --- 2 PLACES ± 0.05 ± --- 1 PLACE ± 0.1 ± --- ANGULAR ± ---°	mm INCH ± --- ± --- ± 0.05 ± --- ± 0.1 ± --- ± ---°	DRAWN BY GMCSWEEN 2004/10/14 CHECKED BY BMAGUIE 2005/01/07 APPROVED BY BMAGUIRE 2010/10/20 MATERIAL NO.	DATE 2004/10/14 DATE 2005/01/07 DATE 2010/10/20	TITLE RAST 5 INDIRECT FEMALE ASSEMBLY 16 AMPS MOLEX INCORPORATED DOCUMENT NO. SD-91779-001 SHEET NO. 1 OF 5	
AC	DESCRIPTION RAST 5 INDIRECT FEMALE ASSEMBLY	DRAFT WHERE APPLICABLE MUST REMAIN WITHIN DIMENSIONS		SEE FOLLOWING SHEETS THIS DRAWING CONTAINS INFORMATION THAT IS PROPRIETARY TO MOLEX INCORPORATED AND SHOULD NOT BE USED WITHOUT WRITTEN PERMISSION			

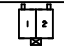
MOLEX PART NO.	HOUSING NO.	CIRCUIT SIZE	COLOUR	POSITION KEYS	CODING KEYS	LATCH POSITION	CONFIGURATION	COLOUR STRIP	REF.
91779-0001	91779-9001	2	NATURAL	1a, 1b 2a, 2b	01c, d20	1/2		NONE	K00
91779-0002	91779-9001	2	NATURAL	1b, 2a	01c, d20	1/2		NONE	K01
91779-0003	91779-9001	2	NATURAL	1a, 2b	d20	1/2		NONE	K05
91779-0004	91779-9001	2	NATURAL	1a	01c, d20	1/2		NONE	K12
91779-0005	91779-9001	2	NATURAL	1a, 2b	01c, d20	1/2		BLUE	K48
91779-0006	91779-9004	2	RED	1a, 1b 2a, 2b	NONE	1/2		NONE	K41
91779-0007	91779-9001	2	NATURAL	2a	01c	1/2		NONE	K42
91779-0008	91779-9004	2	RED	1a, 1b 2a, 2b	d20	1/2		NONE	K34
91779-0009	PART NUMBER OBSOLETE, REPLACED WITH 91779-0006.								
91779-0010	91779-9003	2	BLACK	1a, 1b 2a, 2b	NONE	1/2		NONE	K41
91779-0011	91779-9001	2	NATURAL	1a	d20	1/2		NONE	K66
91779-0012	91779-9001	2	NATURAL	1b	01c, d20	1/2		NONE	K16
91779-0013	91779-9001	2	NATURAL	1a	NONE	1/2		NONE	K70
91779-0014	91779-9001	2	NATURAL	1b 2a 2b	d20	1/2		NONE	K--
91779-0015	91779-9001	2	NATURAL	1a, 1b 2a, 2b	d20	1/2		NONE	K34
91779-0016	91779-9001	2	NATURAL	1a, 1b 2a, 2b	01c	1/2		NONE	K33
91779-0017	91779-9004	2	RED	1a 1b 2b	NONE	1/2		NONE	K43
91779-0018	91779-9001	2	NATURAL	1b 2b	01c	1/2		NONE	K09
91779-0019	91779-9001	2	NATURAL	1b 2b	01c	1/2		GREEN	K--
91779-0020	91779-9001	2	NATURAL	1a 2b	d20	1/2		GREEN	K--
91779-0021	91779-9001	2	NATURAL	2a	01c, d20	1/2		BLACK	K--
91779-0022	91779-9001	2	NATURAL	1b	d20	1/2		RED	K--
91779-0023	91779-9001	2	NATURAL	1b 2b	01c	1/2		BLUE	K--

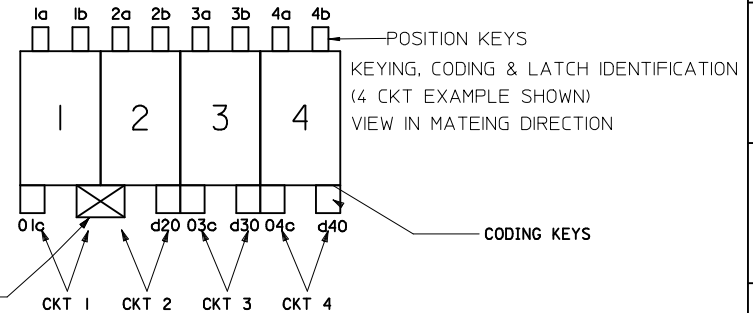
MOLEX PART NO.	HOUSING NO.	CIRCUIT SIZE	COLOUR	POSITION KEYS	CODING KEYS	LATCH POSITION	CONFIGURATION	colour stripe	REF.
91779-0024	91779-9001	2	NATURAL	1b 2b	01c	1/2		ORANGE	K--
91779-0025	91779-9001	2	NATURAL	1a 1b	d20	1/2		NONE	K--
91779-0026	91779-9001	2	NATURAL	1a 2b	01c	1/2		NONE	K--
91779-0027	91779-9003	2	BLACK	1a 2b	NONE	1/2		NONE	K06
91779-0028	91779-9004	2	RED	2a 2b	NONE	1/2		NONE	K31
91779-0029	91779-9001	2	NATURAL	NONE	01c, d20	1/2		NONE	K--
91779-0030	91779-9001	2	NATURAL	1a 2a 2b	01c, d20	1/2		NONE	K62
91779-0031	91779-9001	2	NATURAL	1a 2a	01c, d20	1/2		NONE	K--
91779-0032	91779-9001	2	NATURAL	1b 2b	01c, d20	1/2		NONE	K--
91779-0033	91779-9001	2	NATURAL	1a, 1b 2a, 2b	01c, d20	1/2		RED	K09
91779-0034	91779-9001	2	NATURAL	1a, 1b 2a, 2b	01c, d20	1/2		GREEN	K--
91779-0035	91779-9001	2	NATURAL	2b	NONE	1/2		NONE	K--
91779-0036	91779-9001	2	NATURAL	1a, 1b 2a, 2b	NONE	1/2		NONE	K41
91779-0038	91779-9001	2	NATURAL	1b	NONE	1/2		NONE	K--



SEE SHEET 1 EC NO: IPG2014-4233 DRAWN: MONAHAN 2014/01/06 CHKD: APPR: STIGLITZ 2014/01/20 AC	QUALITY SYMBOLS ▽=0 ▽=0	GENERAL TOLERANCES (UNLESS SPECIFIED) <table border="1"> <tr><th colspan="2">mm</th><th colspan="2">INCH</th></tr> <tr><td>4 PLACES ±</td><td>---</td><td>±</td><td>---</td></tr> <tr><td>3 PLACES ±</td><td>---</td><td>±</td><td>---</td></tr> <tr><td>2 PLACES ±</td><td>0.05</td><td>±</td><td>---</td></tr> <tr><td>1 PLACE ±</td><td>0.1</td><td>±</td><td>---</td></tr> <tr><td colspan="2">ANGULAR ±</td><td colspan="2">---</td></tr> </table>	mm		INCH		4 PLACES ±	---	±	---	3 PLACES ±	---	±	---	2 PLACES ±	0.05	±	---	1 PLACE ±	0.1	±	---	ANGULAR ±		---		DIMENSION STYLE MM ONLY DRAWN BY: GMCSWEEN 2004/10/14 DATE: 2005/01/07 CHECKED BY: BMAGUIRE APPROVED BY: BMAGUIRE 2010/10/20 MATERIAL NO.	SCALE: 2:1 DESIGN UNITS: METRIC THIRD ANGLE PROJECTION	TITLE: RAST 5 INDIRECT FEMALE ASSEMBLY 16 AMPS MOLEX INCORPORATED DOCUMENT NO.: SD-91779-001	SHEET NO.: 2 OF 5
	mm		INCH																											
	4 PLACES ±	---	±	---																										
	3 PLACES ±	---	±	---																										
2 PLACES ±	0.05	±	---																											
1 PLACE ±	0.1	±	---																											
ANGULAR ±		---																												
DRAFT WHERE APPLICABLE MUST REMAIN WITHIN DIMENSIONS		SEE TABLES SIZE: A2 THIS DRAWING CONTAINS INFORMATION THAT IS PROPRIETARY TO MOLEX INCORPORATED AND SHOULD NOT BE USED WITHOUT WRITTEN PERMISSION																												

CIRCUIT 2 CONTIN'D

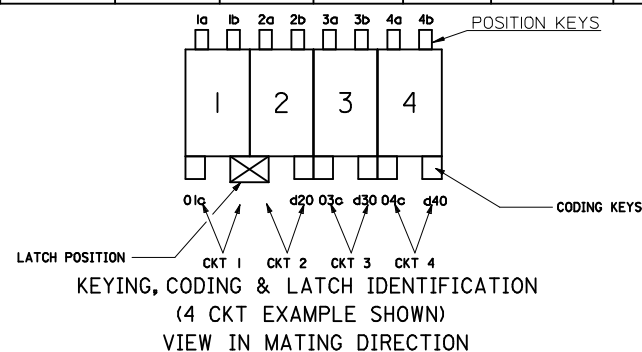
MOLEX PART NO.	HOUSING NO.	CIRCUIT SIZE	COLOUR	POSITION KEYS	CODING KEYS	LATCH POSITION	CONFIGURATION	COLOUR STRIPE	REF.
91779-0039	91779-9001	2	NATURAL	1a 2b	NONE	1/2		NONE	K06



SEE SHEET 1 EC NO: IFC2014-4233 DRAWN: MONAHAN 2014/01/06 CHKD: APPR: STURIFFIN 2014/01/20	QUALITY SYMBOLS	GENERAL TOLERANCES (UNLESS SPECIFIED)	DIMENSION STYLE MM ONLY		SCALE 1:1	DESIGN UNITS METRIC	THIRD ANGLE PROJECTION																		
	$\nabla=0$ $\nabla=0$	<table border="1"> <thead> <tr> <th></th> <th>mm</th> <th>INCH</th> </tr> </thead> <tbody> <tr> <td>4 PLACES</td> <td>± .005</td> <td>± .0004</td> </tr> <tr> <td>3 PLACES</td> <td>± .005</td> <td>± .0004</td> </tr> <tr> <td>2 PLACES</td> <td>± 0.05</td> <td>± .002</td> </tr> <tr> <td>1 PLACE</td> <td>± 0.1</td> <td>± .004</td> </tr> <tr> <td>0 PLACE</td> <td>±</td> <td>±</td> </tr> </tbody> </table>		mm	INCH	4 PLACES	± .005	± .0004	3 PLACES	± .005	± .0004	2 PLACES	± 0.05	± .002	1 PLACE	± 0.1	± .004	0 PLACE	±	±	DRAWN BY: GMCSWEEN DATE: 2004/10/14 CHECKED BY: BMAGUIE DATE: 2005/01/07 APPROVED BY: BMAGUIE DATE: 2010/10/20	TITLE		RAST 5 INDIRECT FEMALE ASSEMBLY 16 AMPS molex	
		mm	INCH																						
	4 PLACES	± .005	± .0004																						
3 PLACES	± .005	± .0004																							
2 PLACES	± 0.05	± .002																							
1 PLACE	± 0.1	± .004																							
0 PLACE	±	±																							
DRAFT WHERE APPLICABLE MUST REMAIN WITHIN DIMENSIONS	MATERIAL NO.	DOCUMENT NO. SD-91779-001	SHEET NO. 3 OF 5																						
SEE TABLES	THIS DRAWING CONTAINS INFORMATION THAT IS PROPRIETARY TO MOLEX INCORPORATED AND SHOULD NOT BE USED WITHOUT WRITTEN PERMISSION																								

10	9	8	7	6	5	4	3	2	1
MOLEX PART NO.	HOUSING NO.	CIRCUIT SIZE	COLOUR	POSITION KEYS	CODING KEYS	LATCH POSITION	CONFIGURATION	COLOUR STRIP	REF.
91779-0101	91779-9101	3	NATURAL	1a 1b 2a 2b 3a 3b	01c d20 03c d30	1/2		NONE	K00
91779-0102	91779-9102	3	NATURAL	1a 1b 2a 2b 3a 3b	01c d10 02c d30	2/3		NONE	K90
91779-0103	91779-9101	3	NATURAL	1b	01c d20	1/2		NONE	K01
91779-0104	91779-9102	3	NATURAL	2a	d10 d30	2/3		NONE	K44
91779-0105	91779-9102	3	NATURAL	3b	02c d30	2/3		NONE	K--
91779-0106	91779-9101	3	NATURAL	NONE	NONE	1/2		NONE	k59
91779-0107	91779-9101	3	NATURAL	1b	01c d20	1/2		RED	k01
91779-0108	91779-9101	3	NATURAL	1a	01c d20	1/2		NONE	K154
91779-0109	91779-9103	3	RED	1a 1b 2a 2b 3a 3b	NONE	2/3		NONE	K39
91779-0110	91779-9103	3	RED	2b 3b	d10	2/3		NONE	K84
91779-0111	91779-9102	3	NATURAL	2b 3a	d10, d30	2/3		NONE	K--
91779-0112	PART NUMBER OBSOLETE, REPLACED WITH 91779-0109.								
91779-0113	91779-9103	3	RED	1a 1b 2a 2b 3a 3b	d10	2/3		NONE	K41
91779-0114	91779-9102	3	NATURAL	1a 1b 2a 2b 3a 3b	d10	2/3		NONE	K41
91779-0115	91779-9101	3	NATURAL	NONE	03c	1/2		NONE	K72
91779-0116	91779-9101	3	NATURAL	1a 1b	d30	1/2		NONE	K05
91779-0117	91779-9102	3	NATURAL	2a	d10 02c d30	2/3		NONE	K--
91779-0118	91779-9102	3	NATURAL	2a	d10	2/3		NONE	K--
91779-0119	91779-9101	3	NATURAL	2a	01c d30	1/2		NONE	K--

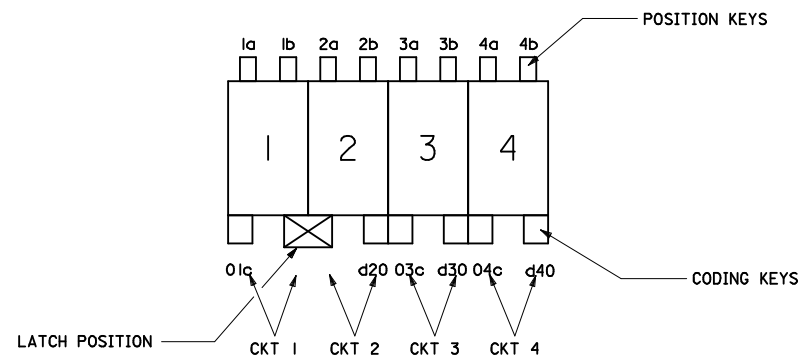
10	9	8	7	6	5	4	3	2	1	
MOLEX PART NO.	HOUSING NO.	CIRCUIT SIZE	COLOUR	VOID CIRCUIT	POSITION KEYS	CODING KEYS	LATCH POSITION	CONFIGURATION	COLOUR STRIP	REF.
91779-0120	91779-9102	3	NATURAL	NONE	2b 3b	d30	2/3		NONE	K--
91779-0121	91779-9101	3	NATURAL	NONE	NONE	01c d30	1/2		NONE	K--
91779-0122	91779-9103	3	RED	NONE	1b 2a 2b 3b	NONE	2/3		NONE	k124
91779-0123	91779-9103	3	RED	2	2b 3b	d10	2/3		NONE	k84
91779-0124	91779-9102	3	NATURAL	NONE	NONE	d10 02c d30	2/3		NONE	K--
91779-0126	91779-9101	3	NATURAL	NONE	3b	01c d30	1/2		NONE	K--
91779-0127	91779-9102	3	NATURAL	NONE	1a 2a 3b	d10 d30	2/3		NONE	k170
91779-0128	91779-9102	3	NATURAL	NONE	1a 2b	NONE	2/3		NONE	K--
91779-0129	91779-9102	3	NATURAL	NONE	1a 1b 2a 2b 3a 3b	01c d30	2/3		NONE	K--
91779-0130	91779-9101	3	NATURAL	NONE	1a 3b	01c	1/2		NONE	K--



SEE SHEET 1 EC NO: IPG2014-4233 DRAWN: MONAHAN 2014/01/06 CHKD: APPR: STGRUFFIN 2014/01/20 AC	QUALITY SYMBOLS	GENERAL TOLERANCES (UNLESS SPECIFIED)	DIMENSION STYLE	SCALE	DESIGN UNITS	THIRD ANGLE PROJECTION	
	▽=0 ▽=0	mm INCH	MM ONLY	2:1	METRIC		
		4 PLACES ± --- ± --- 3 PLACES ± --- ± --- 2 PLACES ± 0.05 ± --- 1 PLACE ± 0.1 ± ---	DRAWN BY DATE GMCSWEEN 2004/10/14	TITLE	RAST 5 INDIRECT FEMALE ASSEMBLY 16 AMPS		
		ANGULAR ± ---°	CHECKED BY DATE BMAGUIE 2005/01/07	APPROVED BY DATE BMAGUIE 2010/10/20	MOLEX INCORPORATED		
	DRAFT WHERE APPLICABLE MUST REMAIN WITHIN DIMENSIONS	MATERIAL NO.	SEE TABLES	DOCUMENT NO.	SD-91779-001		
		SIZE	THIS DRAWING CONTAINS INFORMATION THAT IS PROPRIETARY TO MOLEX INCORPORATED AND SHOULD NOT BE USED WITHOUT WRITTEN PERMISSION				

MOLEX PART NO.	HOUSING NO.	CIRCUIT SIZE	COLOUR	POSITION KEYS	CODING KEYS	LATCH POSITION	CONFIGURATION	COLOUR STRIP	REF.
91779-0201	91779-9201	4	NATURAL	1a 1b 2a 2b 3a 3b 4a 4b	01c d20 03c d40	1/2, 3/4		NONE	K00
91779-0202	91779-9201	4	NATURAL	1b	03c d40	1/2, 3/4		NONE	K01
91779-0203	91779-9201	4	NATURAL	1a 3a 3b	01c d20 d40	1/2, 3/4		NONE	K32
91779-0204	91779-9202	4	NATURAL	NONE	d20	1/2		NONE	K127
91779-0205	91779-9201	4	NATURAL	2a, 4b	d20	1/2, 3/4		NONE	K--
91779-0206	91779-9201	4	NATURAL	2b	d20	1/2, 3/4		NONE	K--
91779-0207	91779-9207	4	NATURAL	3a	01c d20 03c d40	3/4		NONE	K--
91779-0208	91779-9201	4	NATURAL	3a	01c d20 03c d40	1/2 3/4		NONE	K--
91779-0209	91779-9208	4	NATURAL	1a 2b 3b 4b	01c d10 02c d30 04c d40	2/3		NONE	K--
91779-0210	91779-9201	4	NATURAL	1a 1b 2b 3a 3b 4b	d20 d40	1/2 3/4		NONE	K--
91779-0211	91779-9201	4	NATURAL	2a 2b 3b 4b	01c d20 03c d40	1/2 3/4		NONE	K--
91779-0212	91779-9201	4	NATURAL	2a 3a 4b	01c	1/2 3/4		NONE	K--
91779-0213	91779-9202	4	NATURAL	2a 4b	01c d30	1/2		NONE	K--
91779-0214	91779-9202	4	NATURAL	1a 1b 2a 2b 3a 3b 4a 4b	01c d20 03c d30 04c d40	1/2		NONE	K--
91779-0215	91779-9201	4	NATURAL	1a 2b 3b	d40	1/2 3/4		NONE	K--

MOLEX PART NO.	HOUSING NO.	CIRCUIT SIZE	COLOUR	POSITION KEYS	CODING KEYS	LATCH POSITION	CONFIGURATION	COLOUR STRIP	REF.
91779-0216	91779-9201	4	NATURAL	1b 2a 3a 4b	01c d40	1/2, 3/4		NONE	K--
91779-0217	PART NUMBER OBSOLETE. REPLACED WITH 91779-0205								
91779-0218	91779-9201	4	NATURAL	1a 1b 3a 3b	03c d40	1/2, 3/4		NONE	K--
91779-0219	91779-9201	4	NATURAL	1b 2a 3a 4a	01c d20 03c	1/2, 3/4		NONE	K--



KEYING, CODING & LATCH IDENTIFICATION
(4 CKT EXAMPLE SHOWN)
VIEW IN MATING DIRECTION

SEE SHEET 1 EC NO: IPG2014-4233 DRAWN: MONAHAN 2014/10/16 CHKD: APPR: STGRLEFFIN 2014/10/17/20	QUALITY SYMBOLS	GENERAL TOLERANCES (UNLESS SPECIFIED)	DIMENSION STYLE	SCALE	DESIGN UNITS	THIRD ANGLE PROJECTION																																				
	$\nabla=0$ $\nabla=0$	<table border="1"> <thead> <tr> <th></th> <th>mm</th> <th>INCH</th> </tr> </thead> <tbody> <tr> <td>4 PLACES</td> <td>±---</td> <td>±---</td> </tr> <tr> <td>3 PLACES</td> <td>±---</td> <td>±---</td> </tr> <tr> <td>2 PLACES</td> <td>±0.05</td> <td>±---</td> </tr> <tr> <td>1 PLACE</td> <td>±0.1</td> <td>±---</td> </tr> <tr> <td>ANGULAR</td> <td colspan="2">±---°</td> </tr> </tbody> </table>		mm	INCH	4 PLACES	±---	±---	3 PLACES	±---	±---	2 PLACES	±0.05	±---	1 PLACE	±0.1	±---	ANGULAR	±---°		<table border="1"> <thead> <tr> <th>MM ONLY</th> <th>DATE</th> <th>TITLE</th> </tr> </thead> <tbody> <tr> <td>DRAWN BY</td> <td>2004/10/14</td> <td rowspan="2">RAST 5 INDIRECT FEMALE ASSEMBLY 16 AMPS</td> </tr> <tr> <td>GMCSWEEN</td> <td></td> </tr> <tr> <td>CHECKED BY</td> <td>2005/01/07</td> <td rowspan="2">MOLEX INCORPORATED</td> </tr> <tr> <td>BMAGUIE</td> <td></td> </tr> <tr> <td>APPROVED BY</td> <td>2010/10/20</td> <td>SD-91779-001</td> </tr> <tr> <td>BMAGUIE</td> <td></td> <td></td> </tr> </tbody> </table>	MM ONLY	DATE	TITLE	DRAWN BY	2004/10/14	RAST 5 INDIRECT FEMALE ASSEMBLY 16 AMPS	GMCSWEEN		CHECKED BY	2005/01/07	MOLEX INCORPORATED	BMAGUIE		APPROVED BY	2010/10/20	SD-91779-001	BMAGUIE			2:1	METRIC
	mm	INCH																																								
4 PLACES	±---	±---																																								
3 PLACES	±---	±---																																								
2 PLACES	±0.05	±---																																								
1 PLACE	±0.1	±---																																								
ANGULAR	±---°																																									
MM ONLY	DATE	TITLE																																								
DRAWN BY	2004/10/14	RAST 5 INDIRECT FEMALE ASSEMBLY 16 AMPS																																								
GMCSWEEN																																										
CHECKED BY	2005/01/07	MOLEX INCORPORATED																																								
BMAGUIE																																										
APPROVED BY	2010/10/20	SD-91779-001																																								
BMAGUIE																																										
DESCRIPTION	DRAFT WHERE APPLICABLE MUST REMAIN WITHIN DIMENSIONS	SIZE	THIS DRAWING CONTAINS INFORMATION THAT IS PROPRIETARY TO MOLEX INCORPORATED AND SHOULD NOT BE USED WITHOUT WRITTEN PERMISSION																																							
REV	AC	A2	SHEET NO. 5 OF 5																																							