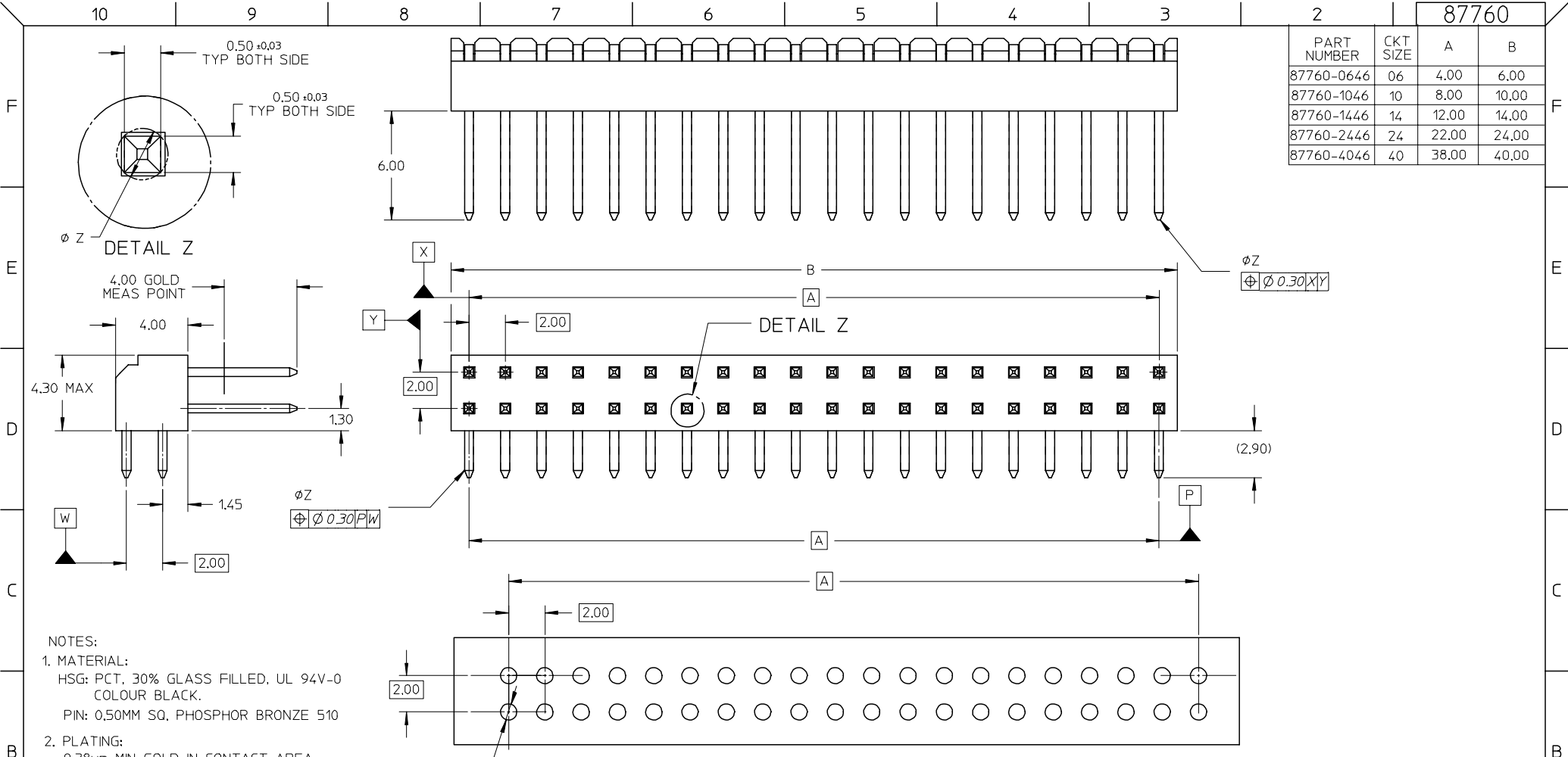


		87760	
PART NUMBER	CKT SIZE	A	B
87760-0646	06	4.00	6.00
87760-1046	10	8.00	10.00
87760-1446	14	12.00	14.00
87760-2446	24	22.00	24.00
87760-4046	40	38.00	40.00



- NOTES:
- MATERIAL:  
HSG: PCT, 30% GLASS FILLED, UL 94V-0 COLOUR BLACK.  
PIN: 0.50MM SQ. PHOSPHOR BRONZE 510
  - PLATING:  
0.38µm MIN GOLD IN CONTACT AREA,  
TIN IN SOLDER TAIL AREA, BOTH OVER NICKEL OVERALL
  - PARTS TO BE PACKED IN TRAY.
  - PRODUCT SPEC PS-87761-100 APPLIES.
  - RECOMMENDED PCB BOARD THK 1.60±0.10 MM.
  - 40 CKT USED FOR ILLUSTRATION ONLY

EC NO: S2004-088Z DRWN:KSEE 2004/09/28 CHKD:PTLM 2004/09/28 APPR:SKTOH 2004/09/28	QUALITY SYMBOLS ▽ = 0 ◁ = 0	GENERAL TOLERANCES (UNLESS SPECIFIED)		SCALE NTS	DESIGN UNITS METRIC	THIRD ANGLE PROJECTION	REVISE ON CAD ONLY			
			mm	INCH	DIMENSION STYLE MM ONLY		TITLE			
		4 PLACES	± ---	± ---	DRAWN BY KSEE	DATE 2003/10/17	SALES DRAWING MGRID, 2MM DUAL ROW HDR. R/A			
		3 PLACES	± ---	± ---	CHECKED BY KCLING	DATE 2003/12/02	MOLEX INCORPORATED			
			2 PLACES	± 0.2	± ---	APPROVED BY SKTOH	DATE 2003/12/11	MATERIAL NO. SEE TABLE	DOCUMENT NO. SD-87760-133	SHEET NO. 1 OF 1
			1 PLACE	± ---	± ---	THIS DRAWING CONTAINS INFORMATION THAT IS PROPRIETARY TO MOLEX INCORPORATED AND SHOULD NOT BE USED WITHOUT WRITTEN PERMISSION				
			ANGULAR ± 3 °							
			DRAFT WHERE APPLICABLE							
			MUST REMAIN WITHIN DIMENSIONS							