

10 9 8 7 6 5 4 3 2 1

F

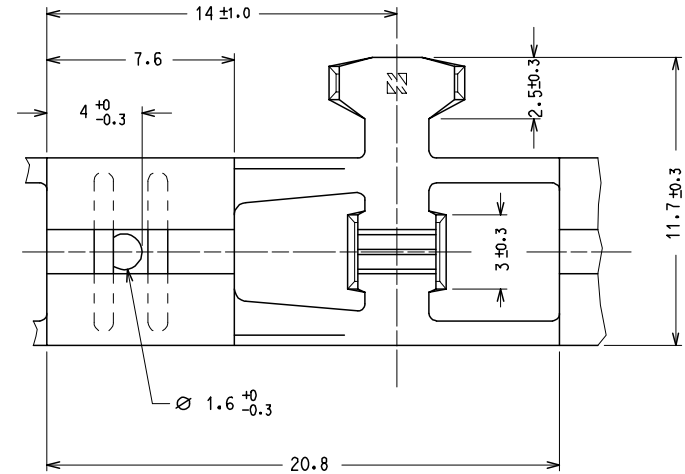
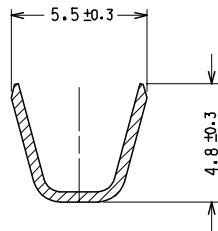
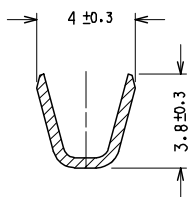
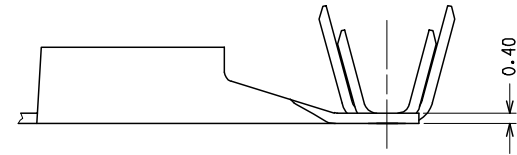
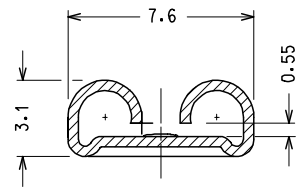
E

D

C

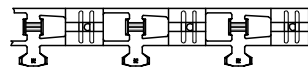
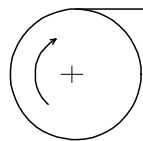
B

A



CARATTERISTICHE PRODOTTO SECONDO PS-94030-001
 PRODUCT CHARACTERISTICS ACCORDING TO PS-94030-002

SENSO DI AVANZAMENTO PER MINI APPLICATORE
 DIRECTION OFF TOP OF REEL



CODICE P/N	MATERIALE MATERIAL	FINITURA PLATING	NOTE NOTE	CONFEZIONE STANDARD STANDARD PACKING QUANTITY
94030-5010	OTTONE BRASS	GREGGIO/ UNPL*	---	15.000 pz. in 3 bobine per scatola 15.000 pcs. per box in 3 reels
94030-5011		STAGNATO/ TIN*	---	
94030-5018		STAGNATO/ TIN*	AVVOLTO CON CARTA INTERMEDIA WOUND WITH INTERLEAF PAPER	

SPQ : 15000 pcs.

Std descr.: FEM TERM 6.3/0.8 RA BRS (insert plating *) 1-2.5

EC NO: Z2005-0030 DRWN:FGOTTARD 2004/09/23 CHKD:RSANDANO 2004/09/23 APPR:GZUIN 2004/09/23	QUALITY SYMBOLS	GENERAL TOLERANCES (UNLESS SPECIFIED)	DIMENSION STYLE	SCALE	DESIGN UNITS	FIRST ANGLE PROJECTION
	▼=0 ▽=0	mm INCH 4 PLACES ± --- ± --- 3 PLACES ± --- ± --- 2 PLACES ± 0.1 ± --- 1 PLACE ± 0.2 ± --- ANGULAR ± 2 °	MM ONLY	5:1	METRIC	
			DRAWN BY DATE	TITLE	MOLEX INCORPORATED	
			CHECKED BY DATE	SD-94030-037	SHEET NO. 1 OF 1	
		DRAFT WHERE APPLICABLE MUST REMAIN WITHIN DIMENSIONS	APPROVED BY DATE	THIS DRAWING CONTAINS INFORMATION THAT IS PROPRIETARY TO MOLEX INCORPORATED AND SHOULD NOT BE USED WITHOUT WRITTEN PERMISSION		
			MPREVIAT 1990/01/17			
			MATERIAL NO.			
			SIZE A3			

9 8 7 6 5 4 3 2 1