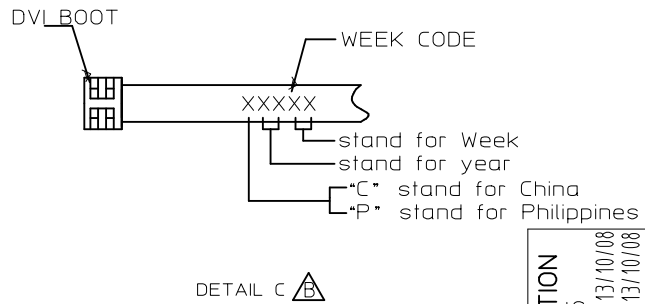
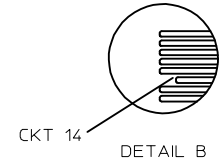
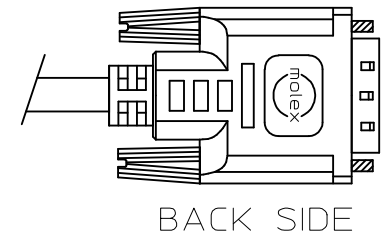
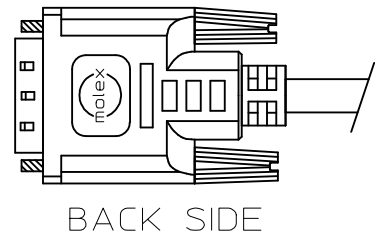
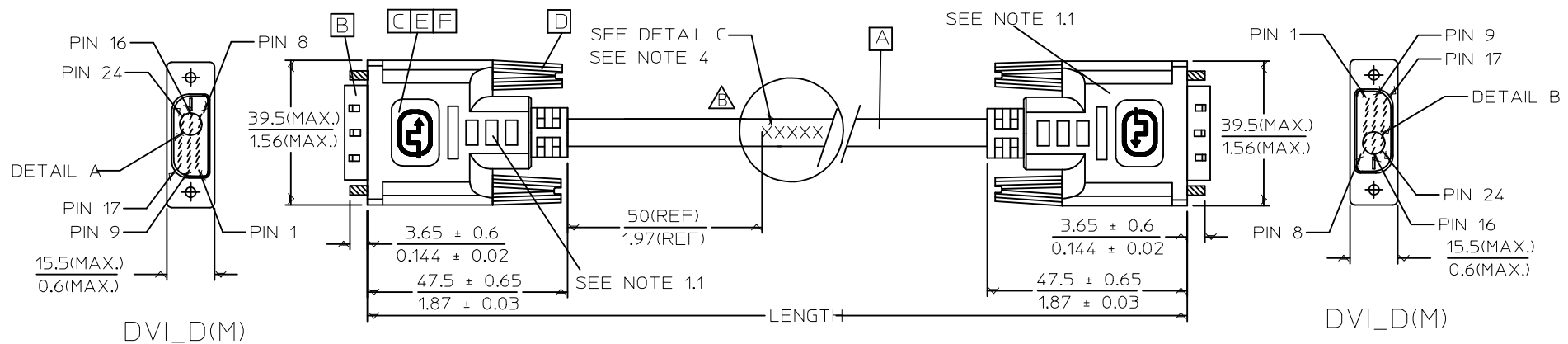


REVISIONS				
EC NO	DATE	REV	DESCRIPTION	CHANGER
CY14-5301	2013/09/12	B	CHANGE THE LABELING CONTENT FOR PRODUCTS TRANSFER TO PHILIPPINES	AHOU
CY14-5360	2013/09/25	C	CHANGE THE DATE PRINTING METHOD AND ADD LASER MARKING REQUIREMENT	AHOU



68802-0012	DVI Cable - DVI_D(M) to DVI_D(M) DLink L=6ft Black	1829 ± 60 / 72 ± 2.4	BLACK	887808368
MX P/N	DESCRIPTION	LENGTH	CABLE COLOR	CABLE P/N

ENTER DESCRIPTION EC NO: CPG2014-1015 DRWN: XJGU001 CHKD: AHOU APPR: XAWANG 2013/10/08 2013/10/08 2013/10/08	QUALITY SYMBOLS $F_A=0$ $F_C=0$ $F_P=0$	GENERAL TOLERANCES (UNLESS SPECIFIED)		DIMENSION STYLE MM/IN		SCALE	DESIGN UNITS METRIC	THIRD ANGLE PROJECTION	
			mm	INCH	DRAWN BY	DATE	DVI-D(M) TO DVI-D(M) DL L=6FT BLACK moLEX DOCUMENT NO. SD-68802-012 SHEET NO. 1 OF 2		
		4 PLACES	± ---	± ---	XJGU001	2013/09/17			
		3 PLACES	± ---	± ---	CHECKED BY	DATE			
		2 PLACES	± ---	± ---	PDAI	2013/09/17			
1 PLACE	± ---	± ---	APPROVED BY	DATE					
0 PLACE	± ---	± ---	XAWANG	2013/09/24	MATERIAL NO.	688020012			
DRAFT WHERE APPLICABLE MUST REMAIN WITHIN DIMENSIONS				SIZE $A/4$	THIS DRAWING CONTAINS INFORMATION THAT IS PROPRIETARY TO MOLEX INCORPORATED AND SHOULD NOT BE USED WITHOUT WRITTEN PERMISSION				

7

6

5

4

3

2

1

NOTE:1. OVERMOLD SPECIFICATION

1.1 DVI BOOT MOLDED WITH SNOW WHITE PVC RESIN P/N IS 887800076.

1.2 UL94V-0, COLOR: MAD432

1.3 HARDNESS (DUROMETER): SHORE A 90-95

2. MECHANICAL SPECIFICATION

2.1 CABLE SHOULD STAND THE PULL FORCE 89-111N FOR 30 SECONDS WITH NO VISIBLE TERMINATION DAMAGE.

2.2 CABLE SHOULD PASS THE FLEX TEST IN 100 CYCLES AT EACH OF PLANES, PER EIA 364-41, CONDITION 1.

3. DVI CONNECTOR SPECIFICATION(DVI:

3.1 REFER TO PRODUCT SPEC. PS74320-001.

3.2 CONTACT PLATING: AU FLASH.

4. THE CODE PLEASE BE PRINTED ON THE SPACE BY LASER MACHINE.

LASER MARKING REQUIREMENT: FONT: ARIAL HIGH: 3.3~4.0mm

5. SHORTCIRCUIT AMONG DRAIN WIRES IS ACCEPTABLE

6. THIS PRODUCT MUST MEET MX RoHS COMPLIANCE.

SHIELD	SHIELD	GROUND	GROUND
PIN 24	PIN 24	WHITE	TMDS CLOCK-
PIN 23	PIN 23	BROWN	TMDS CLOCK+
PIN 22	PIN 22	BRAID	TMDS CLOCK SHIELD
PIN 21	PIN 21	ORANGE	TMDS DATA 5+
PIN 20	PIN 20	PINK	TMDS DATA 5-
PIN 19	PIN 19	0,5 DRAIN	TMDS DATA 0/5 SHIELD
PIN 18	PIN 18	BLUE	TMDS DATA 0+
PIN 17	PIN 17	WHITE	TMDS DATA 0-
PIN 16	PIN 16	WHITE	HOT PLUG DETECT
PIN 15	PIN 15	ORANGE	GROUND(+5V & HV SYNC)
PIN 14	PIN 14	YELLOW	POWER +5V
PIN 13	PIN 13	BLACK	TMDS DATA 3+
PIN 12	PIN 12	GREY	TMDS DATA 3-
PIN 11	PIN 11	1,3 DRAIN	TMDS DATA 1/3 SHIELD
PIN 10	PIN 10	GREEN	TMDS DATA 1+
PIN 9	PIN 9	WHITE	TMDS DATA 1-
PIN 7	PIN 7	RED	DDC DATA
PIN 6	PIN 6	VIOLET	DDC CLOCK
PIN 5	PIN 5	VIOLET	TMDS DATA 4+
PIN 4	PIN 4	LIGHT BLUE	TMDS DATA 4-
PIN 3	PIN 3	2,4DRAIN	TMDS DATA 2 /4 SHIELD
PIN 2	PIN 2	RED	TMDS DATA 2+
PIN 1	PIN 1	WHITE	TMDS DATA 2-
DVI_D	DVI_D	COLOR	CABLE FUNCTION

F	ACETATE CLOTH 887804785	55(Ref.)	2
E	PCB 887899931/887899932		2
D	DVI THUMB SCREW 887806077		2
C	ONE BODY CAN 887899395		2
B	DVI_D DUAL CHANNEL G/F CONNECTOR 743230003		2
A	DVI DUAL LINK CABLE (SEE TABLE)	1829(Ref.)	1
ITEM	DESCRIPTION	L	QTY.

ENTER DESCRIPTION EC NO: CPG2014-1015 DRW: XJGU001 CHKD: AHO APPR: XAWANG	QUALITY SYMBOLS $\nabla_F = 0$ $\nabla_F = 0$ $\nabla_F = 0$	GENERAL TOLERANCES (UNLESS SPECIFIED)		DIMENSION STYLE MM/IN		SCALE ----	DESIGN UNITS METRIC	THIRD ANGLE PROJECTION		
				mm	INCH	DRAWN BY XJGU001	DATE 2013/09/17	TITLE DVI-D(M) TO DVI-D(M) DL L=6FT BLACK		
						CHECKED BY PDAI	DATE 2013/09/17			
				ANGULAR \pm ----		APPROVED BY XAWANG	DATE 2013/09/24	DOCUMENT NO. SD-68802-012		
		DRAFT WHERE APPLICABLE MUST REMAIN WITHIN DIMENSIONS		MATERIAL NO. 688020012	SHEET NO. 2 OF 2					
C	REV	SIZE ∇_4 THIS DRAWING CONTAINS INFORMATION THAT IS PROPRIETARY TO MOLEX INCORPORATED AND SHOULD NOT BE USED WITHOUT WRITTEN PERMISSION								

6

5

4

3

2

1

7 6 5 4 3 2 1

NOTE:1. OVERMOLD SPECIFICATION
 1.1 DVI BOOT MOLDED WITH SNOW WHITE PVC RESIN P/N IS 887800076.
 1.2 UL94V-0, COLOR: MAD432
 1.3 HARDNESS (DUROMETER): SHORE A 90-95
 2. MECHANICAL SPECIFICATION
 2.1 CABLE SHOULD STAND THE PULL FORCE 89-111N FOR 30 SECONDS WITH NO VISIBLE TERMINATION DAMAGE.

2.2 CABLE SHOULD PASS THE FLEX TEST IN 100 CYCLES AT EACH OF PLANES, PER EIA 364-41, CONDITION 1.

3. DVI CONNECTOR SPECIFICATION(DVI:
 3.1 REFER TO PRODUCT SPEC. PS74320-001.
 3.2 CONTACT PLATING: AU FLASH.
 4. THE CODE PLEASE BE PRINTED ON THE SPACE.
 5. SHORTCIRCUIT AMONG DRAIN WIRES IS ACCEPTABLE
 6. THIS PRODUCT MUST MEET MX RoHS COMPLIANCE.

SHIELD	SHIELD	GROUND	GROUND
PIN 24	PIN 24	WHITE	TMDS CLOCK-
PIN 23	PIN 23	BROWN	TMDS CLOCK+
PIN 22	PIN 22	BRAID	TMDS CLOCK SHIELD
PIN 21	PIN 21	ORANGE	TMDS DATA 5+
PIN 20	PIN 20	PINK	TMDS DATA 5-
PIN 19	PIN 19	0,5 DRAIN	TMDS DATA 0/5 SHIELD
PIN 18	PIN 18	BLUE	TMDS DATA 0+
PIN 17	PIN 17	WHITE	TMDS DATA 0-
PIN 16	PIN 16	WHITE	HOT PLUG DETECT
PIN 15	PIN 15	ORANGE	GROUND(+5V & HV SYNC)
PIN 14	PIN 14	YELLOW	POWER +5V
PIN 13	PIN 13	BLACK	TMDS DATA 3+
PIN 12	PIN 12	GREY	TMDS DATA 3-
PIN 11	PIN 11	1,3 DRAIN	TMDS DATA 1/3 SHIELD
PIN 10	PIN 10	GREEN	TMDS DATA 1+
PIN 9	PIN 9	WHITE	TMDS DATA 1-
PIN 7	PIN 7	RED	DDC DATA
PIN 6	PIN 6	VIOLET	DDC CLOCK
PIN 5	PIN 5	VIOLET	TMDS DATA 4+
PIN 4	PIN 4	LIGHT BLUE	TMDS DATA 4-
PIN 3	PIN 3	2,4DRAIN	TMDS DATA 2 /4 SHIELD
PIN 2	PIN 2	RED	TMDS DATA 2+
PIN 1	PIN 1	WHITE	TMDS DATA 2-
DVI_D	DVI_D	COLOR	CABLE FUNCTION

ITEM	DESCRIPTION	L	QTY.
F	ACETATE CLOTH 887804785	55(Ref.)	2
E	PCB 887899931/887899932		2
D	DVI THUMB SCREW 887806077		2
C	ONE BODY CAN 887899395		2
B	DVI_D DUAL CHANNEL G/F CONNECTOR 743230003		2
A	DVI DUAL LINK CABLE (SEE TABLE)	1829(Ref.)	1

EC NO: DG2006-0096 DRWN:PDAI CHKD: APPR:TKAN 2005/10/19 2005/10/19 2005/10/20	QUALITY SYMBOLS 	GENERAL TOLERANCES (UNLESS SPECIFIED)		DIMENSION STYLE MM/IN		SCALE ---	DESIGN UNITS METRIC	THIRD ANGLE PROJECTION		
		4 PLACES	± ---	± ---	DRAWN BY	DATE	TITLE			
		3 PLACES	± ---	± ---	PDAI	2005/10/19	DVI-D(M) TO DVI-D(M) DL L=6FT BLACK			
2 PLACES	± ---	± ---	CHECKED BY	DATE	MOLEX INCORPORATED					
1 PLACE	± ---	± ---	PDAI	2005/10/19	MATERIAL NO. 68802-0012					
ANGULAR ± ---°		APPROVED BY		DATE	DOCUMENT NO. SD-68802-012					
DRAFT WHERE APPLICABLE MUST REMAIN WITHIN DIMENSIONS		ZXDENG		2005/10/19	SHEET NO. 2 OF 2					
SIZE		THIS DRAWING CONTAINS INFORMATION THAT IS PROPRIETARY TO MOLEX INCORPORATED AND SHOULD NOT BE USED WITHOUT WRITTEN PERMISSION								

6 5 4 3 2 1