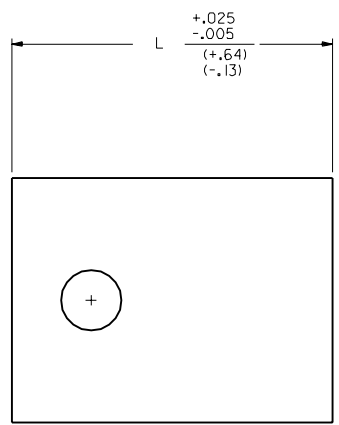
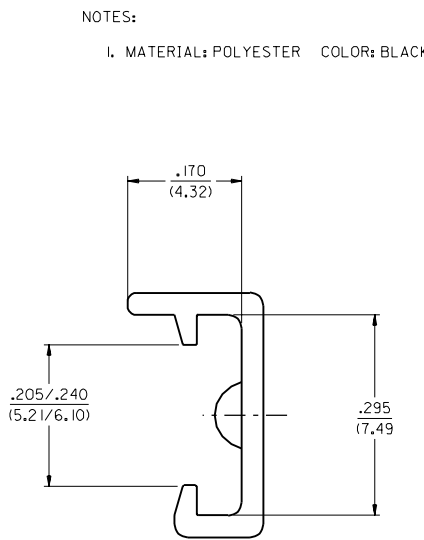


	13	12	11	10	9	8	7	6	5	4	3	2	1									
	CONNECTOR € .098/(2.49)			CONNECTOR € .100/(2.54)			NOTES: I. MATERIAL: POLYESTER COLOR: BLACK															
J	ENG NO. EDP NO.	CKTS	DIM L	ENG NO. EDP NO.	CKTS	DIM L									J							
	7841-B04B 015-05-8048	04	.419 (10.64)	7841-B04A 015-05-8047	04	.420 (10.67)																
I	7841-B05B 015-05-8058	05	.518 (13.16)	7841-B05A 015-05-8057	05	.520 (13.21)																
	7841-B06B 015-05-8068	06	.617 (15.67)	7841-B06A 015-05-8067	06	.620 (15.75)																
H	7841-B07B 015-05-8078	07	.715 (18.16)	7841-B07A 015-05-8077	07	.720 (18.29)																
	7841-B08B 015-05-8088	08	.813 (20.65)	7841-B08A 015-05-8087	08	.820 (20.83)																
G	7841-B09B 015-05-8098	09	.912 (23.16)	7841-B09A 015-05-8097	09	.920 (23.37)																
	7841-B10B 015-05-8108	10	1.010 (25.65)	7841-B10A 015-05-8107	10	1.020 (25.91)																
F	7841-B11B 015-05-8118	11	1.108 (28.14)	7841-B11A 015-05-8117	11	1.120 (28.45)																
	7841-B12B 015-05-8128	12	1.207 (30.66)	7841-B12A 015-05-8127	12	1.220 (30.99)																
E	7841-B13B 015-05-8138	13	1.305 (33.15)	7841-B13A 015-05-8137	13	1.320 (33.53)																
	7841-B14B 015-05-8148	14	1.404 (35.66)	7841-B14A 015-05-8147	14	1.420 (36.07)																
D	7841-B15B 015-05-8158	15	1.502 (38.15)	7841-B15A 015-05-8157	15	1.520 (38.61)																
	7841-B16B 015-05-8168	16	1.601 (40.67)	7841-B16A 015-05-8167	16	1.620 (41.15)																
C	7841-B17B 015-05-8178	17	1.699 (43.15)	7841-B17A 015-05-8177	17	1.720 (43.69)																
	7841-B18B 015-05-8188	18	1.797 (45.64)	7841-B18A 015-05-8187	18	1.820 (46.23)																
B	7841-B19B 015-05-8198	19	1.896 (48.16)	7841-B19A 015-05-8197	19	1.920 (48.77)																
	7841-B20B 015-05-8208	20	1.994 (50.65)	7841-B20A 015-05-8207	20	2.020 (51.31)																
A	7841-B21B 015-05-8218	21	2.093 (53.16)	7841-B21A 015-05-8217	21	2.120 (53.85)																
	7841-B22B 015-05-8228	22	2.191 (55.65)	7841-B22A 015-05-8227	22	2.220 (56.39)																
	7841-B23B 015-05-8238	23	2.289 (58.14)	7841-B23A 015-05-8237	23	2.320 (58.93)																
	7841-B24B 015-05-8248	24	2.388 (60.66)	7841-B24A 015-05-8247	24	2.420 (61.47)																
	7841-B25B 015-05-8258	25	2.486 (63.14)	7841-B25A 015-05-8257	25	2.520 (64.01)																
	7841-B26B 015-05-8268	26	2.585 (65.66)	7841-B26A 015-05-8267	26	2.620 (66.55)																
	7841-B27B 015-05-8278	27	2.684 (68.17)	7841-B27A 015-05-8277	27	2.720 (69.09)																
	7841-B28B 015-05-8288	28	2.782 (70.66)	7841-B28A 015-05-8287	28	2.820 (71.63)																
	13	12	11	10	9	8									7	6	5	4	3	2	1	



DIMENSIONS SHOWN (METRIC) INCH		▽ = 0 ▼ = 0		REVISE ONLY ON CAD SYSTEM	
UNLESS OTHERWISE SPECIFIED TOLERANCES: ANGULAR ± 1/2°					
INCH		METRIC			
3 PLACE	± .014	---	---		
2 PLACE	±	0.13	±		
1 PLACE	---	±	---		
DRAFT WHERE APPLICABLE MUST REMAIN WITHIN DIMENSIONS					
DRG. BY: KSAMIEC	CHK'D. BY: REDDLEY				
APP'D. BY: BLENZ	SCALE: 1:1				
LTR.	REVISIONS	LTR.	REVISIONS		
		Q	SEE SHEET 1		
MOLEX INCORPORATED		SHEET NO. 2		DATE 08/28/95	
SEE CHART		SD-7841-****			
THIS DRAWING CONTAINS INFORMATION THAT IS PROPRIETARY TO MOLEX INC. AND SHOULD NOT BE USED WITHOUT WRITTEN PERMISSION.					