



FEATURES

- UL 60950 recognized
- RoHS compliant
- Typical efficiency from 83%
- Power density 2.68W/cm³
- Wide temperature performance at full 3 Watt load, -40°C to 85°C³
- UL 94V-0 package material
- No heatsink required
- Industry standard pinout
- 5V & 12V input
- 5V, 9V, 12V, & 15V output
- Fully encapsulated with toroidal magnetics
- No external components required
- No electrolytic or tantalum capacitors

PRODUCT OVERVIEW

The MEE3 series is a new range of high performance 3W DC/DC converters, offering 3W of available output power in a previously rated 2W package capable of operation over the full industrial temperature range of -40°C to 85°C³. Available in an industry standard SIP package, with a pin compatible power upgrade path from the 1W NME/NKE and 2W NML series¹, they are ideally suited for providing local supplies on control system boards with the added benefit of 1kVDC galvanic isolation.



SELECTION GUIDE

| Order Code | Nominal Input Voltage | Output Voltage | Output Current | Input Current at Rated Load | Load Regulation (Typ) | Load Regulation (Max) | Ripple & Noise (Typ) ¹ | Ripple & Noise (Max) ¹ | Efficiency (Min.) | Efficiency (Typ.) | Isolation Capacitance | MTTF ² |
|-------------|-----------------------|----------------|----------------|-----------------------------|-----------------------|-----------------------|-----------------------------------|-----------------------------------|-------------------|-------------------|-----------------------|-------------------|
| | V | V | mA | mA | % | % | mVp-p | mVp-p | % | % | pF | MHrs |
| MEE3S0505SC | 5 | 5 | 600 | 703 | 6.3 | 8 | 46 | 70 | 80 | 83 | 32 | 3.9 |
| MEE3S0509SC | 5 | 9 | 333 | 677 | 5.2 | 6.5 | 28 | 45 | 84 | 87 | 50 | 2.9 |
| MEE3S0512SC | 5 | 12 | 250 | 691 | 4.7 | 6 | 26 | 45 | 83 | 86 | 41 | 4.2 |
| MEE3S0515SC | 5 | 15 | 200 | 679 | 4.7 | 6.5 | 24 | 45 | 85 | 88 | 51 | 2.5 |
| MEE3S1205SC | 12 | 5 | 600 | 290 | 4.3 | 6 | 41 | 60 | 82 | 85 | 42 | 3.6 |
| MEE3S1209SC | 12 | 9 | 333 | 280 | 3.5 | 5 | 21 | 40 | 84 | 88 | 66 | 3.7 |
| MEE3S1212SC | 12 | 12 | 250 | 280 | 3 | 4.5 | 19 | 40 | 84 | 88 | 77 | 3.4 |
| MEE3S1215SC | 12 | 15 | 200 | 277 | 2.7 | 4 | 21 | 40 | 85 | 89 | 91 | 3.4 |

INPUT CHARACTERISTICS

| Parameter | Conditions | Min. | Typ. | Max. | Units |
|--------------------------|---------------------------------------|------|------|------|--------|
| Voltage range | Continuous operation, 5V input types | 4.5 | 5 | 5.5 | V |
| | Continuous operation, 12V input types | 10.8 | 12 | 13.2 | |
| Reflected ripple current | 5V input types | | 5 | 15 | mA p-p |
| | 12V input types | | 5 | 15 | |

OUTPUT CHARACTERISTICS

| Parameter | Conditions | Min. | Typ. | Max. | Units |
|----------------------------|---|------|------|------|-------|
| Rated Power | T _A = -40°C to 85°C | | | 3 | W |
| Voltage Set Point Accuracy | See tolerance envelope | | | | |
| Line regulation | High V _{IN} to low V _{IN} | | 1.01 | 1.1 | %/% |

ISOLATION CHARACTERISTICS

| Parameter | Conditions | Min. | Typ. | Max. | Units |
|------------------------|---------------------------|------|------|------|-------|
| Isolation test voltage | Flash tested for 1 second | 1000 | | | VDC |
| Resistance | Viso = 1000VDC | 10 | | | GΩ |

GENERAL CHARACTERISTICS

| Parameter | Conditions | Min. | Typ. | Max. | Units |
|---------------------|------------|------|------|------|-------|
| Switching frequency | | | 60 | | kHz |

TEMPERATURE CHARACTERISTICS

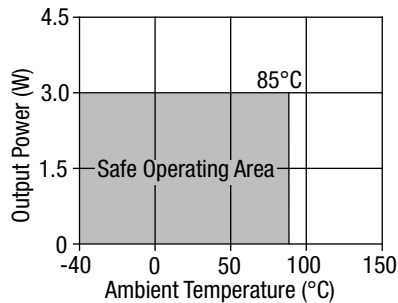
| Parameter | Conditions | Min. | Typ. | Max. | Units |
|-------------------------------------|------------------------------------|------|------|------|-------|
| Specification | All output types | -40 | | 85 | °C |
| Storage | | -50 | | 125 | |
| Case Temperature rise above ambient | MEE3Sxx05SC, MEE3S0512C | | | 40 | |
| | MEE3S0515C, MEE3S1209C, MEE3S1212C | | | 35 | |
| | MEE3S1215C, MEE3S0509C | | | 30 | |
| Cooling | Free air convection | | | | |

ABSOLUTE MAXIMUM RATINGS

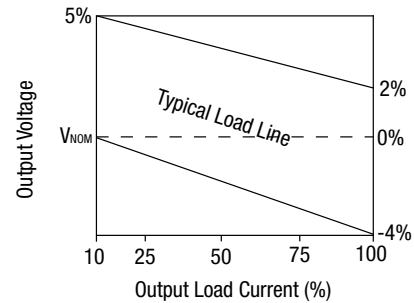
| | |
|---|-------|
| Lead temperature 1mm from case for 10 seconds | 260°C |
| Input voltage V _{IN} , MEE3S05 types | 7V |
| Input voltage V _{IN} , MEE3S12 types | 15V |

1. See Ripple & Noise characterisation method.
 2. Calculated using MIL-HDBK-217F FN2 with nominal input voltage at full load.
 3. See safety approval section on page 2.
- All specifications typical at T_A = 25°C, nominal input voltage and rated output current unless otherwise specified.

TEMPERATURE DERATING GRAPH



OUTPUT VOLTAGE TOLERANCE ENVELOPE



The voltage tolerance envelope shows typical load regulation characteristics for this product series. The tolerance envelope is the maximum output voltage variation due to changes in output loading.

TECHNICAL NOTES

ISOLATION VOLTAGE

'Hi Pot Test', 'Flash Tested', 'Withstand Voltage', 'Proof Voltage', 'Dielectric Withstand Voltage' & 'Isolation Test Voltage' are all terms that relate to the same thing, a test voltage, applied for a specified time, across a component designed to provide electrical isolation, to verify the integrity of that isolation.

Murata Power Solutions MEE3 series of DC/DC converters are all 100% production tested at their stated isolation voltage. This is 1kVDC for 1 second.

A question commonly asked is, "What is the continuous voltage that can be applied across the part in normal operation?"

The MEE3 series has been recognized by Underwriters Laboratory for functional isolation. Both input and output should normally be maintained within SELV limits i.e. less than 42.4V peak, or 60VDC. The isolation test voltage represents a measure of immunity to transient voltages and the part should never be used as an element of a safety isolation system. The part could be expected to function correctly with several hundred volts offset applied continuously across the isolation barrier; but then the circuitry on both sides of the barrier must be regarded as operating at an unsafe voltage and further isolation/insulation systems must form a barrier between these circuits and any user-accessible circuitry according to safety standard requirements.

REPEATED HIGH-VOLTAGE ISOLATION TESTING

It is well known that repeated high-voltage isolation testing of a barrier component can actually degrade isolation capability, to a lesser or greater degree depending on materials, construction and environment. The MEE3 series has toroidal isolation transformers, with no additional insulation between primary and secondary windings of enameled wire. While parts can be expected to withstand several times the stated test voltage, the isolation capability does depend on the wire insulation. Any material, including this enamel (typically polyurethane) is susceptible to eventual chemical degradation when subject to very high applied voltages thus implying that the number of tests should be strictly limited. We therefore strongly advise against repeated high voltage isolation testing, but if it is absolutely required, that the voltage be reduced by 20% from specified test voltage.

This consideration equally applies to agency recognized parts rated for better than functional isolation where the wire enamel insulation is always supplemented by a further insulation system of physical spacing or barriers.

RoHS COMPLIANT INFORMATION



This series is compatible with RoHS soldering systems with a peak wave solder temperature of 260°C for 10 seconds. The pin termination finish on the SIP package type is Tin Plate, Hot Dipped over Matte Tin with Nickel Preplate. They are backward compatible with Sn/Pb soldering systems. For further information, please visit www.murata-ps.com/rohs

SAFETY APPROVAL

The MEE3 series has been recognized by Underwriters Laboratory (UL) to UL 60950 for functional isolation in a maximum still air ambient temperature of 63°C and/or case temperature limit of 91°C. Case temperature measured on the face opposite the pins. File number E179522 applies.

The MEE3 series of converters are not internally fused so to meet the requirement of UL 60950, an input line fuse should always be used. An anti-surge 2.5A should be used for MEE3S05xxSC models, and an anti-surge 1A should be used for MEE3S12xxSC models. All fuses should be UL approved and rated to at least the maximum allowable DC input voltage.

APPLICATION NOTES (continued)

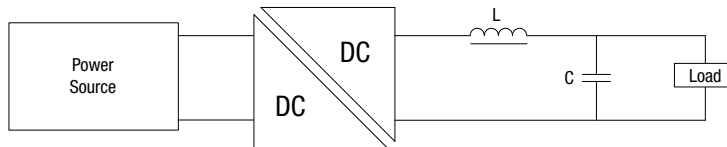
Output Ripple Reduction

By using the values of inductance and capacitance stated, the output ripple at the rated load is lowered to 5mV p-p max.

Component selection

Capacitor: It is required that the ESR (Equivalent Series Resistance) should be as low as possible, ceramic types are recommended. The voltage rating should be at least twice (except for 15V output), the rated output voltage of the DC/DC converter.

Inductor: The rated current of the inductor should not be less than that of the output of the DC/DC converter. At the rated current, the DC resistance of the inductor should be such that the voltage drop across the inductor is <2% of the rated voltage of the DC/DC converter. The SRF (Self Resonant Frequency) should be >20MHz.



| | Inductor | | | Capacitor |
|-------------|------------|--------|--------------|------------|
| | L, μ H | SMD | Through Hole | C, μ F |
| MEE3S0505SC | 10 | 84103C | 11R103C | 4.7 |
| MEE3S0509SC | 22 | 84223C | 11R223C | 2.2 |
| MEE3S0512SC | 47 | 84473C | 11R473C | 1 |
| MEE3S0515SC | 47 | 84473C | 11R473C | 1 |
| MEE3S1205SC | 10 | 84103C | 11R103C | 4.7 |
| MEE3S1209SC | 22 | 84223C | 11R223C | 2.2 |
| MEE3S1212SC | 47 | 84473C | 11R473C | 1 |
| MEE3S1215SC | 47 | 84473C | 11R473C | 1 |

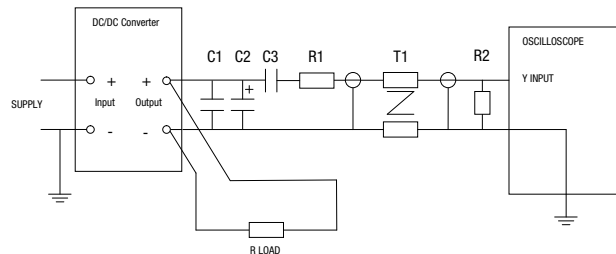
Ripple & Noise Characterisation Method

Ripple and noise measurements are performed with the following test configuration.

| | |
|-------|--|
| C1 | 1 μ F X7R multilayer ceramic capacitor, voltage rating to be a minimum of 3 times the output voltage of the DC/DC converter |
| C2 | 10 μ F tantalum capacitor, voltage rating to be a minimum of 1.5 times the output voltage of the DC/DC converter with an ESR of less |
| C3 | 100nF multilayer ceramic capacitor, general purpose |
| R1 | 450 Ω resistor, carbon film, \pm 1% tolerance |
| R2 | 50 Ω BNC termination |
| T1 | 3T of the coax cable through a ferrite toroid |
| RLOAD | Resistive load to the maximum power rating of the DC/DC converter. Connections should be made via twisted wires |

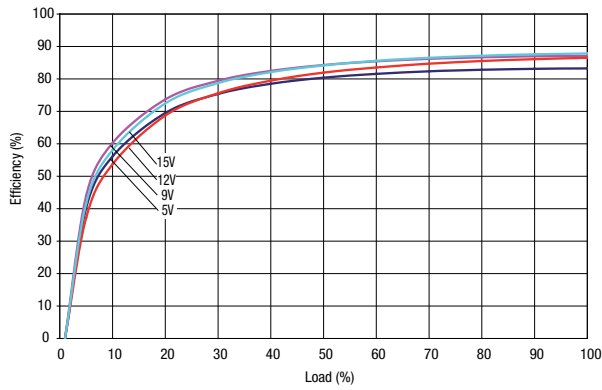
Measured values are multiplied by 10 to obtain the specified values.

Differential Mode Noise Test Schematic

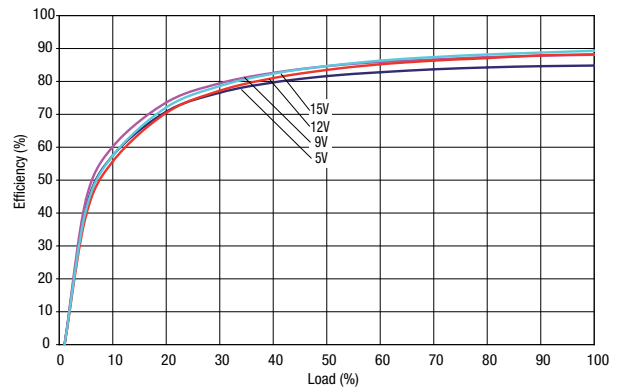


EFFICIENCY VS LOAD

MEE3S05xxSC Input Voltage



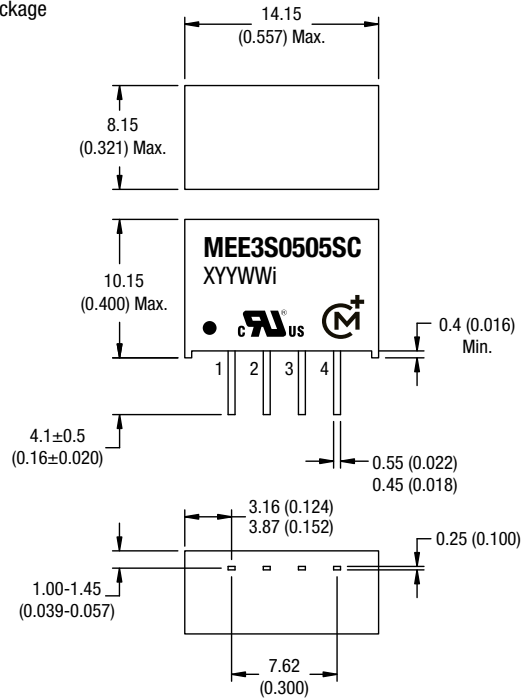
MEE3S12xxSC Input Voltage



PACKAGE SPECIFICATIONS

MECHANICAL DIMENSIONS

SIP Package



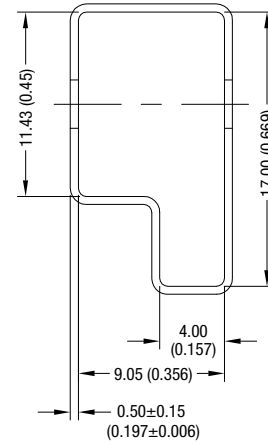
All dimensions in mm ± 0.1 mm (inches ± 0.004). All pins on a 2.54 (0.1) pitch and within ± 0.25 (0.01) of true position.

Weight: 2.3 g

PIN CONNECTIONS - 4 PIN SIP

| Pin | Function |
|-----|----------|
| 1 | -VIN |
| 2 | +VIN |
| 3 | -VOUT |
| 4 | +VOUT |

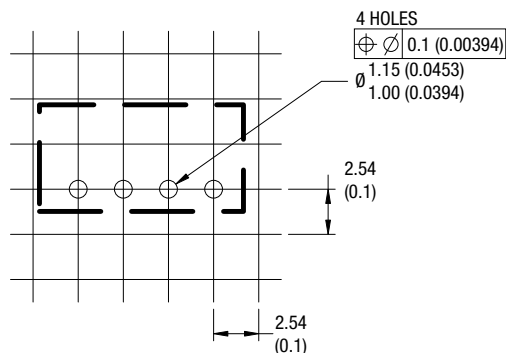
TUBE OUTLINE DIMENSIONS



Unless otherwise stated all dimensions in mm (inches) ± 0.5 mm.
Tube length: 520mm ± 2 mm (20.47).

Tube Quantity: 35

RECOMMENDED FOOTPRINT DETAILS



Unless otherwise stated all dimensions in mm (inches) ± 0.5 mm.