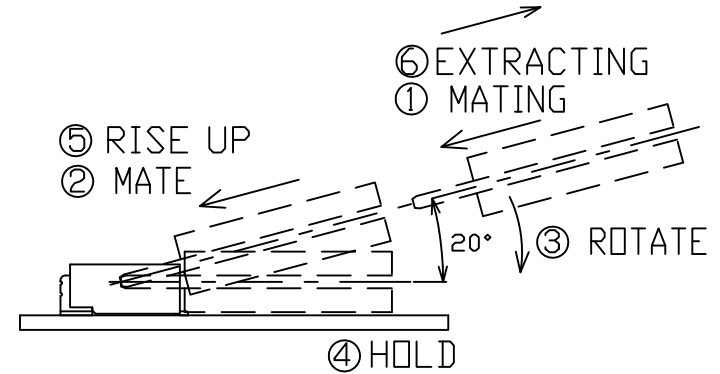
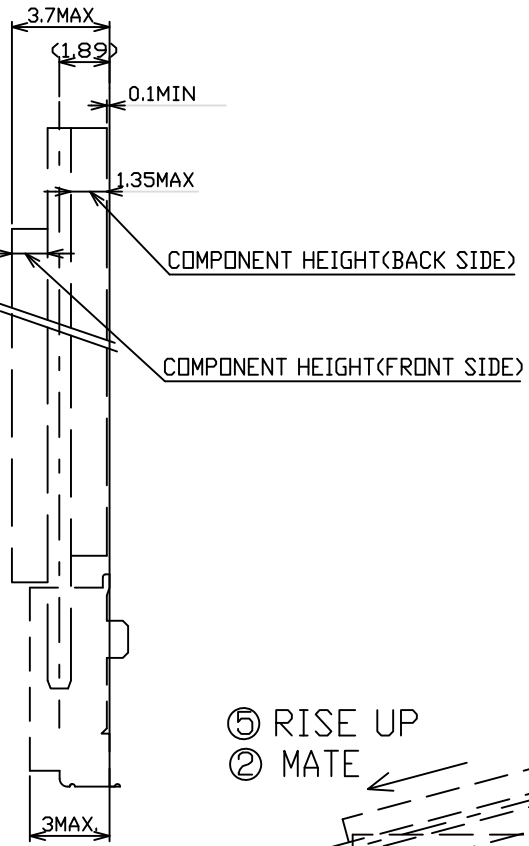


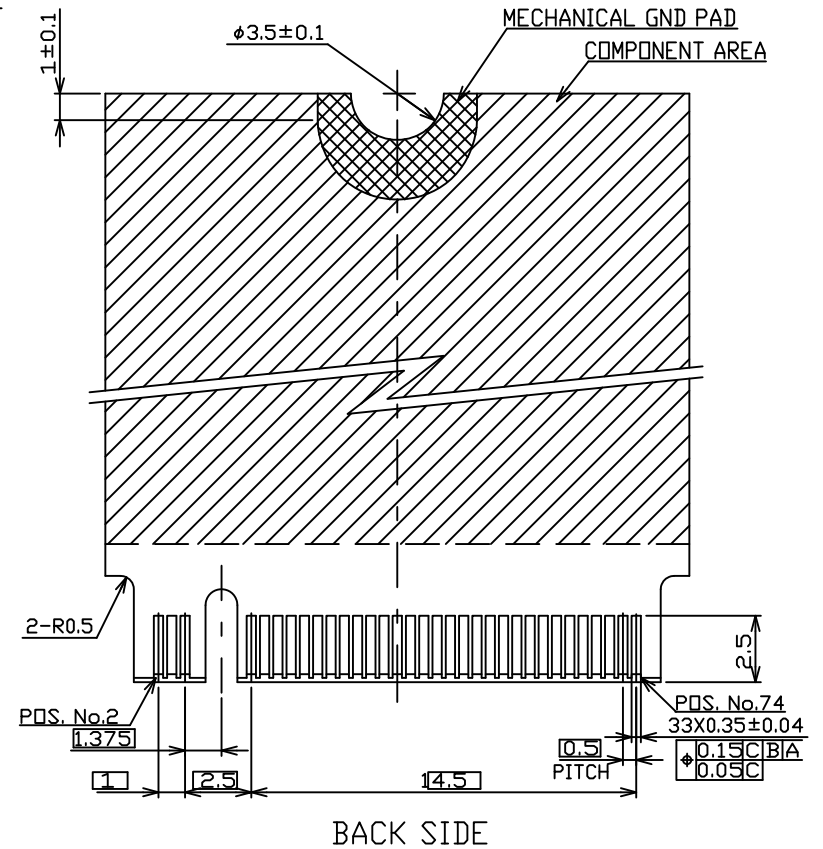
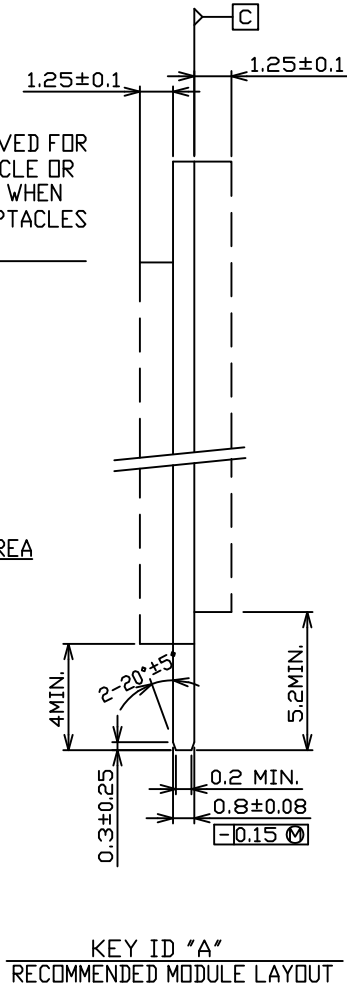
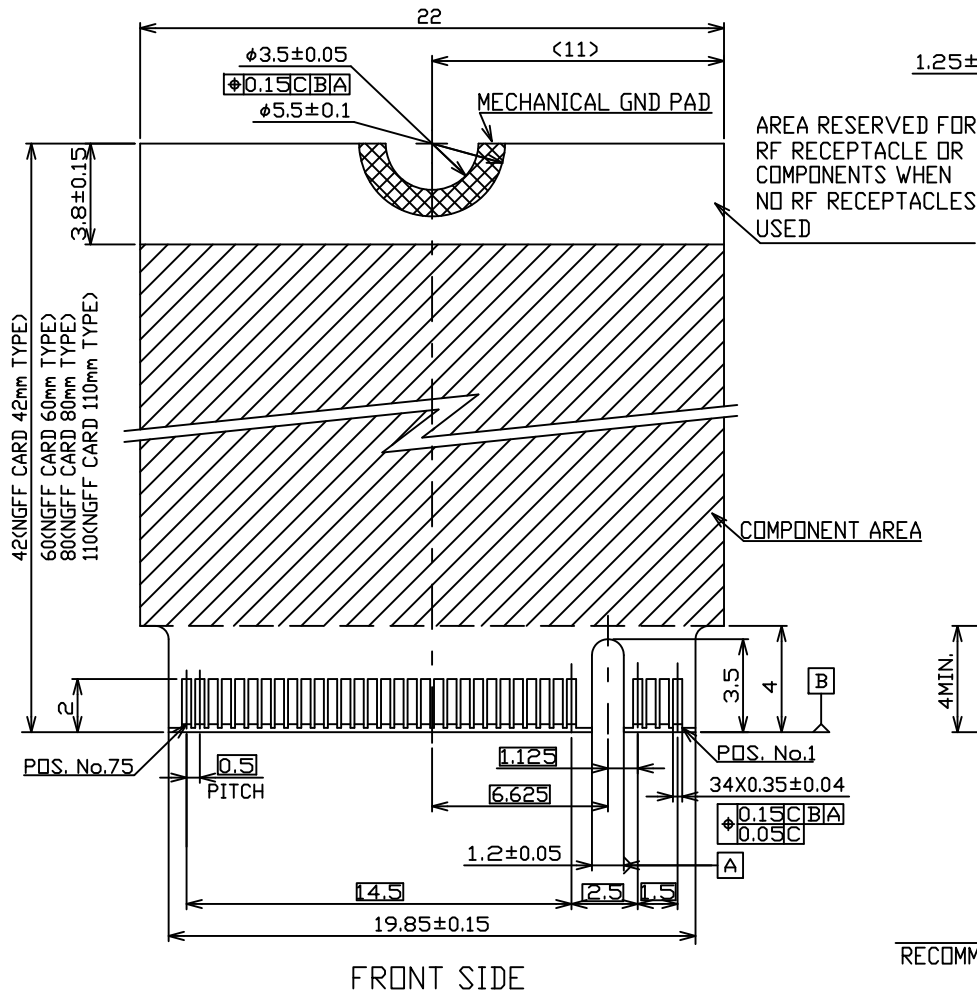
42(NGFF CARD 42mm TYPE)
 60(NGFF CARD 60mm TYPE)
 80(NGFF CARD 80mm TYPE)
 110(NGFF CARD 110mm TYPE)



KEY ID "A"
 RECOMMENDED P.C.BOARD LAYOUT

				UNLESS OTHERWISE SPECIFIED TOLERANCE			www.attend.com.tw			
				ANGLES	ANG.	±5°				
				LINEAR	0.	±0.3				
					0.0	±0.25				
				0.00	±0.20					
				SCALE	AS SHOWN	UNIT: mm				
				DRAWN	Willis	2013/12/09	DRAWN NAME:			
				CHECKED	Angel	2013/12/09	M.2 Connector Key A H:3.2mm			
				APPROVED	Ken	2013/12/09	PRODUCT NO.	123A-32AA0-R01		
REV.	DESCRIPTION	DATE	REV.	DESCRIPTION	DATE	SIZE	A4	REV. 1.0	FILE NAME	123A-32AA0-R01_B_1
3	Revise:									
2	Revise:									
1	Revise:									





REV.	DESCRIPTION	DATE	REV.	DESCRIPTION	DATE	SIZE	REV.	FILE NAME
1						A4	1.0	123A-32AA0-R01_B_1
2								
3								
4								
5								
6								
7								
8								
9								
10								

UNLESS OTHERWISE SPECIFIED TOLERANCE		
ANGLES	ANG.	±5°
	0.	±0.3
LINEAR	0.0	±0.25
	0.00	±0.20
SCALE	AS SHOWN	UNIT: mm
DRAWN	Willis	2013/12/09
CHECKED	Angel	2013/12/09
APPROVED	Ken	2013/12/09

		www.attend.com.tw	
		DRAWN NAME: M.2 Connector Key A H:3.2mm	
PRODUCT NO.	123A-32AA0-R01	FILE NAME	123A-32AA0-R01_B_1

A

△

△

△

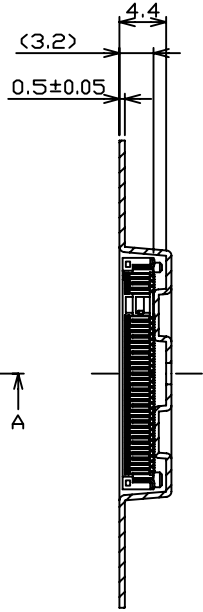
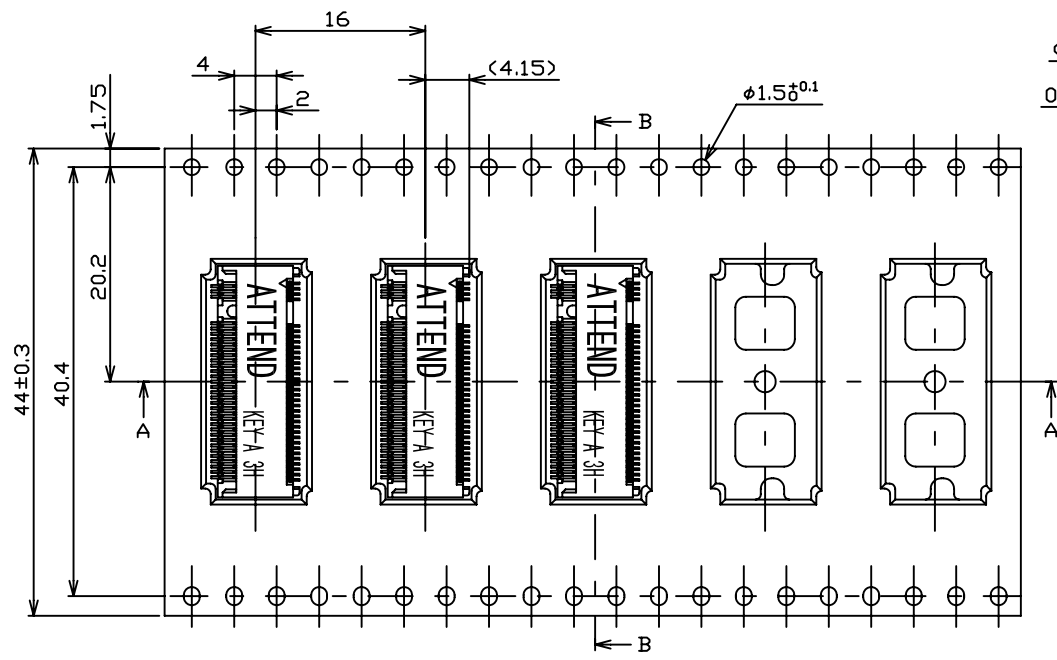
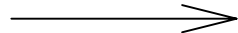
A

△

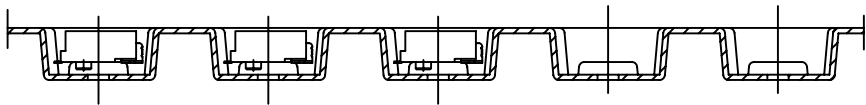
△

△

DIRECTION OFF TOP OF REEL



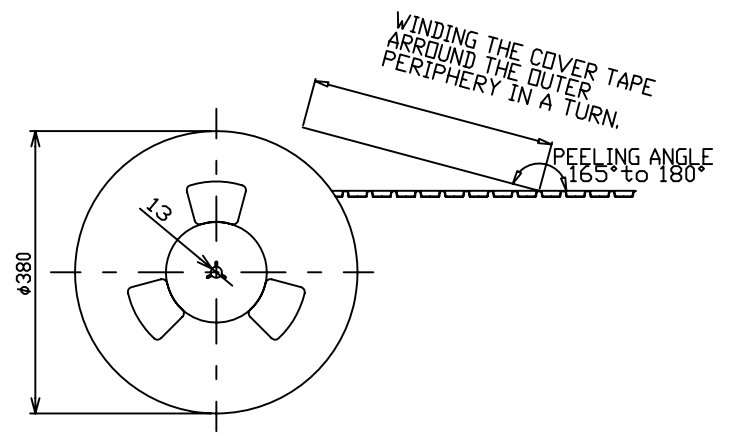
SECT B-B



SECT A-A

NOTES:

1. THE DIRECTION OF EACH CONNECTOR ON A EMBOSS IS REFERED TO THIS DRAWING.
2. GENERAL TOLERANCE : ±0.5 , ±3°
3. PACKAGED IN EMBOSS TAPE AND PLASTIC REEL 1200 PCS PRE REEL.



UNLESS OTHERWISE SPECIFIED TOLERANCE		
ANGLES	ANG.	±5°
LINEAR	0.	±0.3
	0.0	±0.25
	0.00	±0.20
SCALE	AS SHOWN	UNIT: mm
DRAWN	Willis	2013/12/09
CHECKED	Angel	2013/12/09
APPROVED	Ken	2013/12/09



www.attend.com.tw

DRAWN NAME:
M.2 Connector Key A H:3.2mm

PRODUCT NO. 123A-32AA0-R01

FILE NAME 123A-32AA0-R01_D_1

REV.	DESCRIPTION	DATE	REV.	DESCRIPTION	DATE
1			2		
2			3		
3			4		
4			5		
5			6		
6			7		



SIZE A4 REV. 1.0