

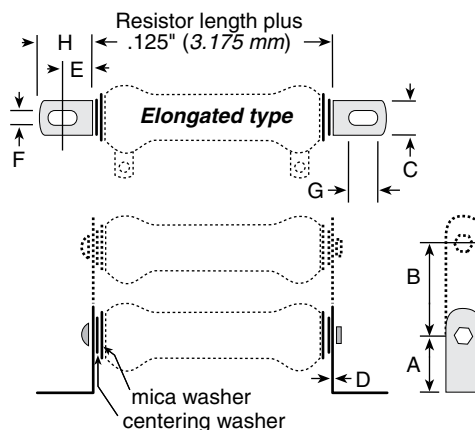
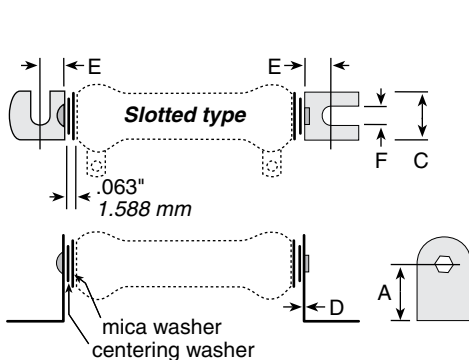
Mounting Hardware

For 200, 210, 270 and 280 Series

THRU-BOLTS AND MOUNTING BRACKETS

Sturdy plated steel brackets, along with thru-bolts, centering washers and insulating washers (included), allow for secure mounting of 210 type and 270 type resistors. Mounting brackets are available in either slotted (one with end-slot/one with side-slot) or elongated styles.

Type	Slotted	Dimensions								Std. Core Length	Bolt Length
		A	B	C	D	E	F	G	H		
6101	E	0.781"	—	0.75"	0.031"	0.438"	0.25"	—	—	1 ³ / ₄ "	2 ¹ / ₄ "
6104	E	0.781"	—	0.75"	0.031"	0.438"	0.25"	—	—	2"	2 ¹ / ₂ "
6110	E	1"	—	1.125"	0.063"	0.813"	0.313"	—	—	2 ¹ / ₄ "	2 ³ / ₄ "
Elongated											
6120	E	1"	—	0.5"	0.031"	0.422"	0.219"	.438	.750	4"	4 ³ / ₄ "
6126	E	1.5"	—	1.25"	0.063"	0.438"	0.281"	.563	.875	6"	6 ⁵ / ₈ "
6127	E	1.5"	2"	1.25"	0.063"	0.438"	0.281"	.563	.875	6 ¹ / ₂ "	7"
6128	E	1.5"	2"	1.25"	0.063"	0.438"	0.281"	.563	.875	8 ¹ / ₂ "	9 ¹ / ₈ "
6129	E	1.5"	2"	1.25"	0.063"	0.438"	0.281"	.563	.875	10 ¹ / ₂ "	11 ¹ / ₈ "



ORDERING INFORMATION

Slotted		Euro lug		RoHS Compliant	
No. of Resistors	Bracket	Core Code	Std. Core Length in.	Std. Core Length mm	
1	6101		2		
2	6102	K	4		
3	6103		6		
1	6104		2	119	
2	6105	M	4	119	
3	6106		6 ¹ / ₂	119	
1	6110A		4	170	
2	6111A	N	6	170	
3	6112A		6	170	
1	6110		8 ¹ / ₂	252	
2	6111	P	10 ¹ / ₂	252	
3	6112		10 ¹ / ₂	252	
1	6113B		8 ¹ / ₂	375	
		R	10 ¹ / ₂		
			11 ³ / ₄		
1	6114	S	12		
			15		
			20		

Elongated		RoHS Compliant	
No. of Resistors	Bracket	Core Code	Standard Core Length (in)
1	6120		1
2	6121	D	1 ⁹ / ₄
		H	2
		K	2 ¹ / ₄
			4
1	6122		2
2	6123	M	4
3	6124	N	6 ¹ / ₂
4	6125		170
1	6126		8 ¹ / ₂
2	6127	P	10 ¹ / ₂
3	6128		
4	6129		

More detailed information at <http://www.ohmite.com/techdata/lug-mounting.php>

⊕ = Most popular Standard values

✓ = Standard values

⊕ = Non-Standard values subject to minimum handling charge per item

(continued)

Mounting Hardware

For 200, 210, 270 and 280 Series

MOUNTING BRACKETS

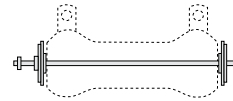
Brackets fit inside cores of 200, 210 and 270 type resistors and remain in place by spring tension. Standard brackets are plated steel and have no suffix to part number. Spring steel brackets are indicated with an "S" suffix following part number.



Standard	Part number	Spring steel	Mtg screw size (max.)	For resistors (power ratings)
+	5E	5SE	6	8, 12 watt
✓	7E	7SE	6	20 watt
+	9E	9SE	6	25, 50, 75 watt
+	12E	12SE	10	100 watt
+	18E	18SE	10	175, 225 watt

THRU BOLTS

Thru-Bolts, with centering washers and mica insulating washers, permit perpendicular mounting of 200, 210 and 270 type resistors to panels up to 0.25" thick.



Part No.	Bolt size Length	No.	For resistors (power rating)
✚ 7PA5E	1.75"	8	8 watt
✚ 7PA10E	2.5"	8	12 watt
✚ 7PA20E	2.75"	8	20 watt
✚ 7PA25E	2.75"	10	25 watt
✚ 7PA50E	4.75"	10	50 watt
✚ 7PA75E	6.75"	10	75 watt
✚ 7PA100E	7.313"	10	100 watt
✚ 7PA160E	9.5"	0.25"	175 watt
✚ 7PA200E	11.5"	0.25"	225 watt

WASHERS

Metal Centering

Part No.	Diameter Outer	Diameter Inner	For max. screw size	For resistors (power ratings)	
+	6000E	0.563"	0.313	#10	25, 50, 75 watt
+	6001E	0.75"	0.5	#10	100 watt
+	6003E	1.125"	0.75	0.25"	175, 225 watt

Mica insulating

Part No.	Diameter Outer	Diameter Inner	For resistors (power ratings)	
+	6010E	0.75"	0.625"	25, 50, 75 watt
+	6011E*	0.75"	0.313"	25, 50, 75 watt
✚	6012E	1"	0.625"	100 watt
✓	6013E*	1"	0.5"	100 watt
✚	6014E	1.25"	0.625"	core 1" O.D. x 0.625" I.D.
+	6015E*	1.25"	0.625"	core 1" O.D. x 0.625" I.D.
✓	6016E	1.5"	0.625"	175, 225 watt
+	6017E*	1.5"	0.75"	175, 225 watt

* Use with centering washers.

ADJUSTABLE LUGS

FOR 210 SERIES

One standard screwdriver type adjustable lug is supplied with each unit.

Two types of lugs can be ordered separately: standard or with a silver contact button; both types are available with a screwdriver type lug.

Resistor core diam. (O.D., in. / mm)	Standard part numbers	
	Standard	Silver
0.313 / 7.94	✚ 2115E	✚ 2116E
0.563 / 14.3	✚ 2121E	✓ 2123E
0.750 / 19.05	✚ 2125E	✚ 2127E
1.125 / 28.58	✓ 2133E	✚ 2135E

Double thumb screw Lug (Part Number 2160E)

The double thumb screw adjustable lug permits easier adjustment and less chance of damage to resistance wire. Available for 1.125" cores only.

More detailed information at <http://www.ohmite.com/techdata/lug-mounting.php>

- ✚ = Most popular Standard values
- ✓ = Standard values
- ✚ = Non-Standard values subject to minimum handling charge per item