

G Series

Capacitor Discharge & Symmetry



FEATURES

- High Power Dissipation up to 13W @25°C
- Specially Designed to meet Repetitive Pulse Loading
- Corrosion Resistant Terminals for long life
- Superior Vibration Resistance
- IEC 115-1 Reference Standard

SERIES SPECIFICATIONS

| Series | Wattage @25°C | Wattage @70°C | Limiting Voltage | Critical Value | Ohmic Range |
|--------|---------------|---------------|------------------|----------------|-------------|
| GW10 | 10 | 8.5 | 685 | 47KΩ | 1Ω-82K |
| GW13 | 13 | 11 | 940 | 68KΩ | 1Ω-120K |

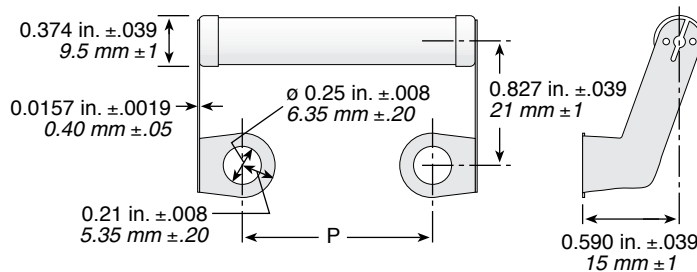
CHARACTERISTICS

| | |
|--------------------------|-------------------------|
| Temperature Range | -55°C to 200°C |
| Terminal Strength | >25N |
| Derating | 25°C to 350°C, Linearly |
| TCR | ±100 ppm/°C |
| Tolerance | 1%, ±2%, ±5%, ±10% |

PERFORMANCE DATA

| | | |
|---------------------------------------|---|------------------|
| Endurance at Rated Temperature | Full Rated Power for 1000hrs, (1.5hrs ON, 0.5hrs OFF) at 25°C | ΔR < 5% + 0R05 |
| Short Term Overload | 10 x Rated Power for 5 secs, IEC115-1, Clause 4.1.3 | ΔR < 2% + 0R05 |
| Damp Heat | 90-95% RH, 40°C, 56 Days, | ΔR < 5% + 0R05 |
| Steady State | IEC 115-1, Clause 4.17.3 | |
| Climatic Sequence | As per IEC 115-1, Clause 4.23 | ΔR < 5% + 0R05 |
| Solderability | Not Applicable-Resistor is Designed for Screw Mounting Only | |
| Terminal Strength | 25 N Pull Test for 10 Seconds, IEC 115-1, Clause 4.16 | ΔR < 0.5% + 0R05 |

DIMENSIONS



| Series | Length P (in. ±.039 / mm±1) | |
|--------|--------------------------------|--------------|
| | GW10 | 0.866 / 22.0 |
| GW13 | 1.252 / 31.8 | |

(continued)

G Series

Capacitor Discharge & Symmetry

COMPATIBILITY

BHC

| GW10 Series | Case Sizes | GW13 Series | Case Sizes |
|-------------|------------|-------------|----------------------------|
| ALS30/31 | KE, KF | ALS30/31 | ND, NF, NP, NT, RD, RH, RP |

Cornell Dubilier

| GW10 Series | Case Sizes | GW13 Series | Case Sizes |
|-------------|--------------------------------|-------------|--|
| 3186 | EA, EB, EC, ED, EE, EF, EG, EH | 3186 | GC, GD, GE, GF, GG, GH, GJ, DN |
| 3188 | EA, EB, EC, ED, EE, EF, EG, EH | 3188 | GC, GD, GE, GF, GG, GH, GJ, DN |
| 520C | BA, BH, BB, BJ, BC, BD, BE, BF | 520C | DB, DJ, DC, DD, DE, DF, DP, DN, DG, FC, FD, FE, FF, FP, FN, FG |
| DCMC | BA, BH, BB, BJ, BC, BD, BE, BF | DCMC | DB, DJ, DC, DD, DE, DF, DP, DN, DG, FC, FD, FE, FF, FP, FN, FG |
| FG | All | | |
| OTB | All | | |
| MPF | All | | |
| PF | BA, BH, BB, BJ, BC, BD, BE, BF | | |
| SCR | A | | |
| SF | All | | |
| T | A | | |

Epcos

| GW10 Series | Case Sizes | GW13 Series | Case Sizes |
|-------------|------------|-------------|------------|
| B41456 | 51.6 | B41456 | 76.9 |
| B41458 | 51.6 | B41458 | 76.9 |
| B43456 | 51.6 | B43456 | 76.9, 91 |
| B43458 | 51.6 | B43458 | 76.9, 91 |

ILL Capacitor

| GW10 Series | Case Sizes | GW13 Series | Case Sizes |
|-------------|------------|-------------|------------|
| LKP | 51 | LKP | 77, 90 |
| LRP | 51 | | |

Nichicon UK

| GW10 Series | Case Sizes | GW13 Series | Case Sizes |
|-------------|------------|-------------|------------|
| NR | 51 | NR | 76.2, 90 |
| NT | 51 | NT | 76.2, 90 |
| NW | 51 | NW | 76.2, 90 |
| NX | 51 | NX | 76.2, 90 |
| QR | 51 | QR | 76.2, 90 |

Panasonic

| GW10 Series | Case Sizes | GW13 Series | Case Sizes |
|-------------|------------------------------------|-------------|----------------------------|
| G | FB, FC, FE, FG, FH, FK, FL, FN, FP | G | HG, HH, HK, HL, HN, HP, HW |

United Chemi-Con

| GW10 Series | Case Sizes | GW13 Series | Case Sizes |
|-------------|------------|-------------|------------|
| KMH | 50 | LXA | 76, 89 |
| LXA | 50 | LXR | 76, 89 |
| RWE | 50 | KMH | 76, 89 |
| RWF | 50 | RWE | 76, 89 |
| RWY | 50 | RWF | 76, 89 |
| SME | 50 | RWL | 76, 89 |
| | | RWY | 76, 89 |
| | | SME | 76, 89 |
| | | UTOR | 76 |

Vishay

| GW10 Series | Case Sizes | GW13 Series | Case Sizes |
|-----------------|------------------------------------|-----------------|------------------------|
| 36D, 36DE, 36DX | BY, BA, BM, BB, BL, BC, BD, BE, BF | 36D, 36DE, 36DX | DB, DJ, DC, DD, DE, DF |

ORDERING INFORMATION

G Series — **GW10J5K00E** — E = RoHS compliant

| Component Modifier | Wattage | Tolerance | Resistance Value | Examples: |
|--------------------|----------------------|---------------------------------------|--------------------------|--|
| W = wirewound | 10 watts 13 watts | K = 10% J = 5% G = 2% F = 1% | R = Decimal K = 1,000 | 1K00 = 1,000Ω 10K0 = 10,000Ω 82K0 = 82,000Ω 120K = 120,000Ω |

Standard part numbers

| Ohms | 10 watt | 13 watt |
|------|------------|------------|
| 1K | GW10J1K00E | GW13J1K00E |
| 2.5K | GW10J2K50E | GW13J2K50E |
| 5K | GW10J5K00E | GW13J5K00E |
| 7.5K | GW10J7K50E | GW13J7K50E |
| 10K | GW10J10K0E | GW13J10K0E |
| 15K | GW10J15K0E | GW13J15K0E |
| 20K | GW10J20K0E | GW13J20K0E |
| 25K | GW10J25K0E | GW13J25K0E |
| 40K | GW10J40K0E | GW13J40K0E |
| 50K | GW10J50K0E | GW13J50K0E |
| 75K | GW10J75K0E | GW13J75K0E |