

# Control Knobs

## INSTRUMENT KNOBS

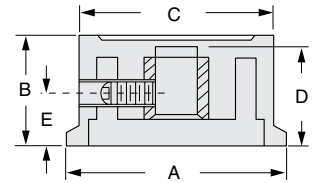


### FEATURES

- Phenolic material provides heat and impact resistance for durability
- Can be customized with decorative inlays, indicator lines, or slots
- Engraving, hot stamping, and pad printing available for a distinct appearance

| Ohmite Part | Dimensions (inches) |        |       |       |       | Set screw | Shaft hole* | Finish** |
|-------------|---------------------|--------|-------|-------|-------|-----------|-------------|----------|
|             | A                   | B      | C     | D     | E     |           |             |          |
| 5200E       | 25/32               | 15/32  | 21/32 | 13/32 | 7/32  | M3 x 0.5  | BB          | SDL      |
| 5205E       | 1                   | 27/32  | 29/32 | 1/2   | 37/64 | M4 x 0.7  | BB          | SDL      |
| 5210E       | 19/32               | 11/32  | 15/32 | 33/64 | 21/32 | M4 x 0.7  | BB          | SDL      |
| 5220E       | 13/4                | 115/32 | 11/2  | 45/64 | 13/16 | M4 x 0.7  | BB          | SDL      |
| 5240E       | 19/32               | 35/64  | 31/64 | 27/64 | 23/64 | M3 x 0.5  | BB          | L        |
| 5250E       | 15/16               | 25/32  | 3/4   | 19/32 | 19/32 | M4 x 0.7  | BB          | L        |
| 5300E       | 17/32               | 5/8    | 3/8   | 7/32  | 7/16  | 6-32      | PH          | SCL      |
| 5302E       | 25/32               | 5/8    | 17/32 | 17/32 | 9/32  | 8-32      | PH          | SCL      |
| 5304E       | 11/32               | 11/16  | 7/8   | 17/32 | 9/32  | 8-32      | PH          | SCL      |
| 5450E       | 11/16               | 13/32  | 5/8   | 11/32 | 3/16  | 8-32      | PH          | -        |
| 5475E       | 1                   | 1/2    | 15/16 | 7/16  | 9/32  | 8-32      | PH          | -        |

\*PH=Plain Hole BB=Brass Bushing \*\*SDL=Silver Disc Lined; L=Lined; SCL=Silver Cap Lined



Material type: Thermoset  
Inset diam.: 1/4 in.

## POINTER KNOBS

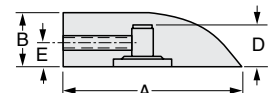


### FEATURES

- Phenolic material provides heat and impact resistance for durability
- Terrific range of styles and sizes
- Indicator line available on several of the pointer knobs for precise settings
- Samples available

| Ohmite Part | Dimensions (inches) |       |       |      | Set screw | Insert diam. | Shaft hole* | Finish** |
|-------------|---------------------|-------|-------|------|-----------|--------------|-------------|----------|
|             | A                   | B     | D     | E    |           |              |             |          |
| 5400E       | 27/32               | 13/32 | 11/32 | 3/16 | 8-32      | 1/4          | PH          | -        |
| 5470E       | 1                   | 1/2   | 7/16  | 9/32 | 8-32      | 1/4          | PH          | L        |
| 5500E       | 1 1/8               | 9/16  | 9/32  | 9/32 | 8-32      | 1/4          | PH          | L        |
| 5510E       | 3/4                 | 9/16  | 13/32 | 7/32 | 8-32      | 1/4          | PH          | L        |
| 5511E       | 3/4                 | 9/16  | 7/16  | -    | -         | 1/4***       | Spring      | L        |
| 5520E       | 1 1/2               | 3/4   | 5/8   | 5/16 | 8-32      | 1/4          | PH          | L        |
| 5521E       | 1 1/2               | 3/4   | 7/16  | 5/16 | 8-32      | 1/4          | BB          | L        |
| 5522E       | 1 1/8               | 5/8   | 7/16  | 9/32 | 8-32      | 1/4          | PH          | L        |
| 5600E       | 1 7/32              | 5/8   | 1/2   | 9/32 | 8-32      | 1/4          | PH          | -        |
| 5601E       | 1 7/32              | 5/8   | 1/2   | 9/32 | 8-32      | 1/4          | PH          | L        |
| 5602E       | 1 7/32              | 5/8   | 9/32  | 9/32 | 8-32      | 1/4          | BB          | L        |
| 5610E       | 1 3/16              | 1/2   | 7/16  | 7/32 | 8-32      | 1/4          | PH          | -        |

\*PH=Plain Hole BB=Brass Bushing \*\*L=Lined \*\*\*1/4" flatted to 5/32"



Material type: Thermoset

# Control Knobs

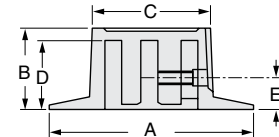
## SKIRTED KNOBS

### FEATURES

- Available in phenolic to provide appearance, strength, and heat resistance for a variety of applications
- Sizes, shapes, decorative inlays, and graphics to enhance your products
- Engraving, hot stamping, and pad printing available
- Skirt adds level of decoration
- Samples available



| Ohmite Part | Dimensions (inches) |        |        |       |      | Set screw | Shaft hole* | Finish** |
|-------------|---------------------|--------|--------|-------|------|-----------|-------------|----------|
|             | A                   | B      | C      | D     | E    |           |             |          |
| 5700E       | 1/2                 | 5/8    | 15/32  | 1/2   | 3/16 | 6-32      | PH          | -        |
| 5701E       | 1/2                 | 5/8    | 15/32  | 1/2   | 3/16 | 6-32      | PH          | L        |
| 5710E       | 3/4                 | 1/2    | 17/32  | 13/32 | 7/32 | 8-32      | PH          | L        |
| 5713E       | 1 1/8               | 5/8    | 13/16  | 1/2   | 9/32 | 8-32      | PH          | L        |
| 5719E       | 1 1/8               | 5/8    | 1 1/4  | 1/2   | 9/32 | 8-32      | BB          | L        |
| 5730E       | 1 1/2               | 7/8    | 1 1/64 | 3/4   | 9/32 | 8-32      | PH          | SDL      |
| 5740E       | 2 1/32              | 15/16  | 1 3/8  | 13/16 | 5/16 | 8-32 (2)  | PH          | SDL      |
| 5800E       | 1 1/2               | 1 1/16 | 5/8    | 9/16  | 9/32 | 8-32      | PH          | L        |



**Material type:** Thermoset  
**Inset diam.:** 1/4 in.

\*PH=Plain Hole BB=Brass Bushing  
\*\*L=Lined SD=Silver Disc SDL=Silver Disc Lined

## TRANSILLUMINATED/SOFT TOUCH KNOBS

### FEATURES

- Soft thermoplastic elastomer
- Two shot molding process enables multiple materials to be embedded into one part
- Available in black TPE over white or clear indicator to provide comfort and style to your application
- Call for any other color or combination
- Matte finish



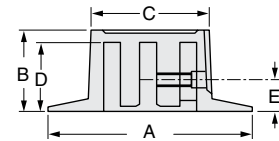
5940E, 5920E, 5930E

| Part                    | Dimensions (inches) |       |       |      |
|-------------------------|---------------------|-------|-------|------|
|                         | A                   | B     | D     | E    |
| <b>Soft Touch Knobs</b> |                     |       |       |      |
| 5940E                   | 1 3/8               | 27/32 | 23/32 | 1/4  |
| 5920E                   | 1 5/8               | 61/64 | 7/8   | 9/32 |
| 5930E                   | 1 57/64             | 1     | 7/8   | 5/16 |



5941E, 5921E, 5931E

| Part                          | Dimensions (inches) |       |       |      |
|-------------------------------|---------------------|-------|-------|------|
|                               | A                   | B     | D     | E    |
| <b>Transilluminated Knobs</b> |                     |       |       |      |
| 5941E                         | 1 3/8               | 27/32 | 23/32 | 1/4  |
| 5921E                         | 1 5/8               | 61/64 | 7/8   | 1/4  |
| 5931E                         | 1 57/64             | 1     | 7/8   | 9/32 |



**Material type:** Thermoplastic overmold  
**Inset diam.:** 1/4 in.  
**Set screw:** 8-32  
**Shaft hole:** Brass bushing  
**Finish:** Matte

## CUSTOMIZATION



In order to save you time and money, Ohmite offers a wide array of secondary operations and finishing services. Most of our parts can be customized to your specific need. Our secondary operations and finishing services include:

- Hot Stamping
- Drilling
- Pad Printing
- Engraving
- Ultrasonic Welding
- Branding
- Paint Fill
- Decorative Pointers
- Machining
- Turning
- Tapping
- Bagging
- Buff and Polish
- Sand Blasting
- 3-D CAD Imaging
- Assembly
- Packaging
- Custom Color
- Matching
- Kitting
- Silk Screen
- Decorative Inlays
- Plating
- Vacuum Metalizing
- Paint Coatings