

Rotary Backlock Connector (0.5-mm Pitch, Dual Contact)

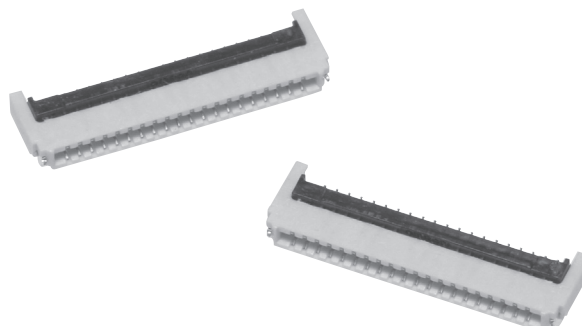
XF2U

Rotary Backlock Mechanism with a Depth of 3.5 mm and Low Profile of 0.9 mm

- Dual contact reduces the number of parts.
- Wide molding wall on the rear bottom of the connector allows greater freedom in board design.
- Gold plated with an applicable FPC thickness of 0.2 mm.
- Halogen Free (See note)

Note: OMRON uses the following standard to determine halogen-free construction: 900 ppm max. for Br, 900 ppm max. for Cl, and 1,500 ppm max. for Br+Cl.

- RoHS Compliant



Ordering Information

Pins	Model	Quantity per reel (unit) (See Note)
4	XF2U-0415-3A	3,000
6	XF2U-0615-3A	
8	XF2U-0815-3A	
11	XF2U-1115-3A	
14	XF2U-1415-3A	
18	XF2U-1815-3A	
20	XF2U-2015-3A	
24	XF2U-2415-3A	
27	XF2U-2715-3A	
30	XF2U-3015-3A	
32	XF2U-3215-3A	
40	XF2U-4015-3A	

Note: Please order by integer multiple of the quantity per reel.

Ratings and Specifications

■ Characteristics

Rated current	0.5 A AC/DC
Rated voltage	50 V AC/DC
Contact resistance	60 mΩ max. (at 20 mV max., 100 mA max.)
Insulation resistance	100 MΩ min. (at 250 VDC)
Withstand voltage	250 VAC for 1 min. (leakage current: 1 mA max.)
Insertion tolerance	20 times
Ambient operating temperature	-30 to 85°C (with no icing or condensation)

■ Materials and Finish

Housing	LCP resin (UL94V-0)/natural
Slider	LCP resin (UL94V-0)/black
Contacts	Spring copper alloy/nickel substrate (2 μm), Gold-plated contacts (0.15 μm)
Hold-down	Spring copper alloy/fused-tin plating (2 μm)

Dimensions

Unit: mm

XF2U-□□15-3A

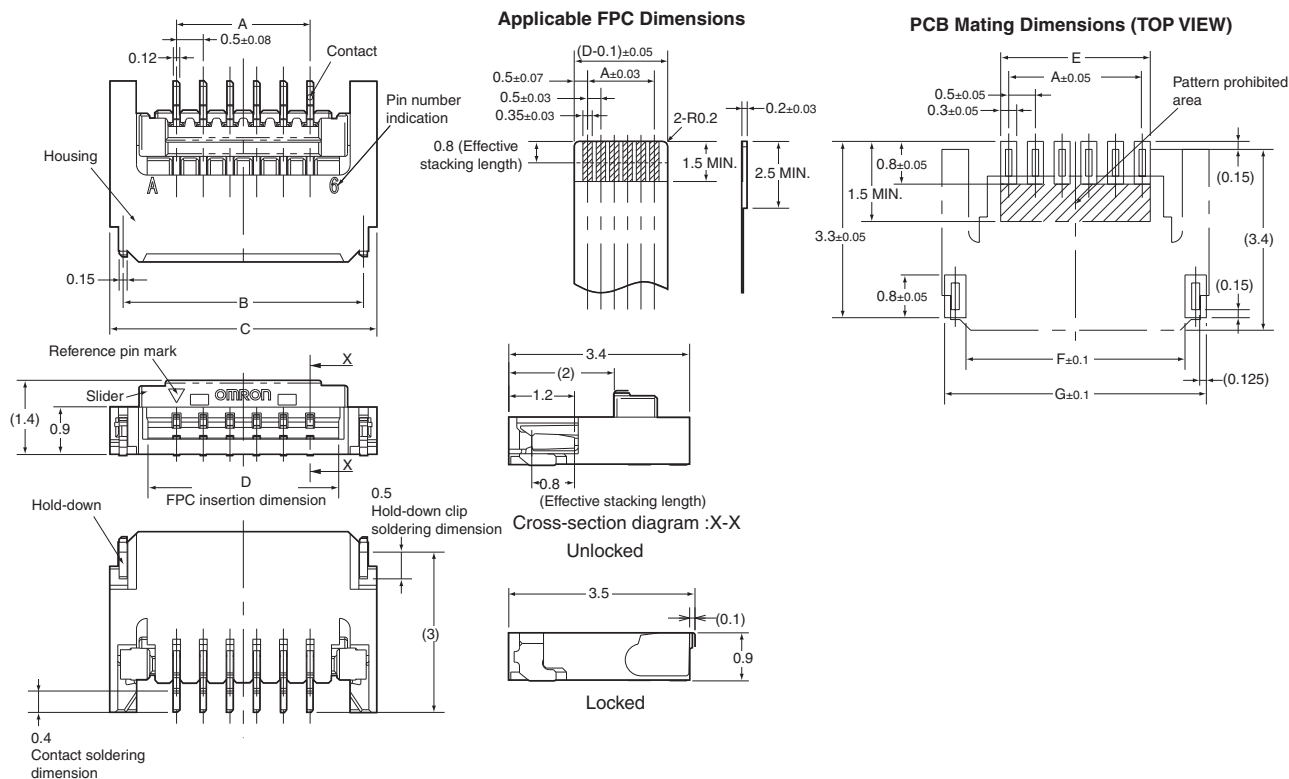
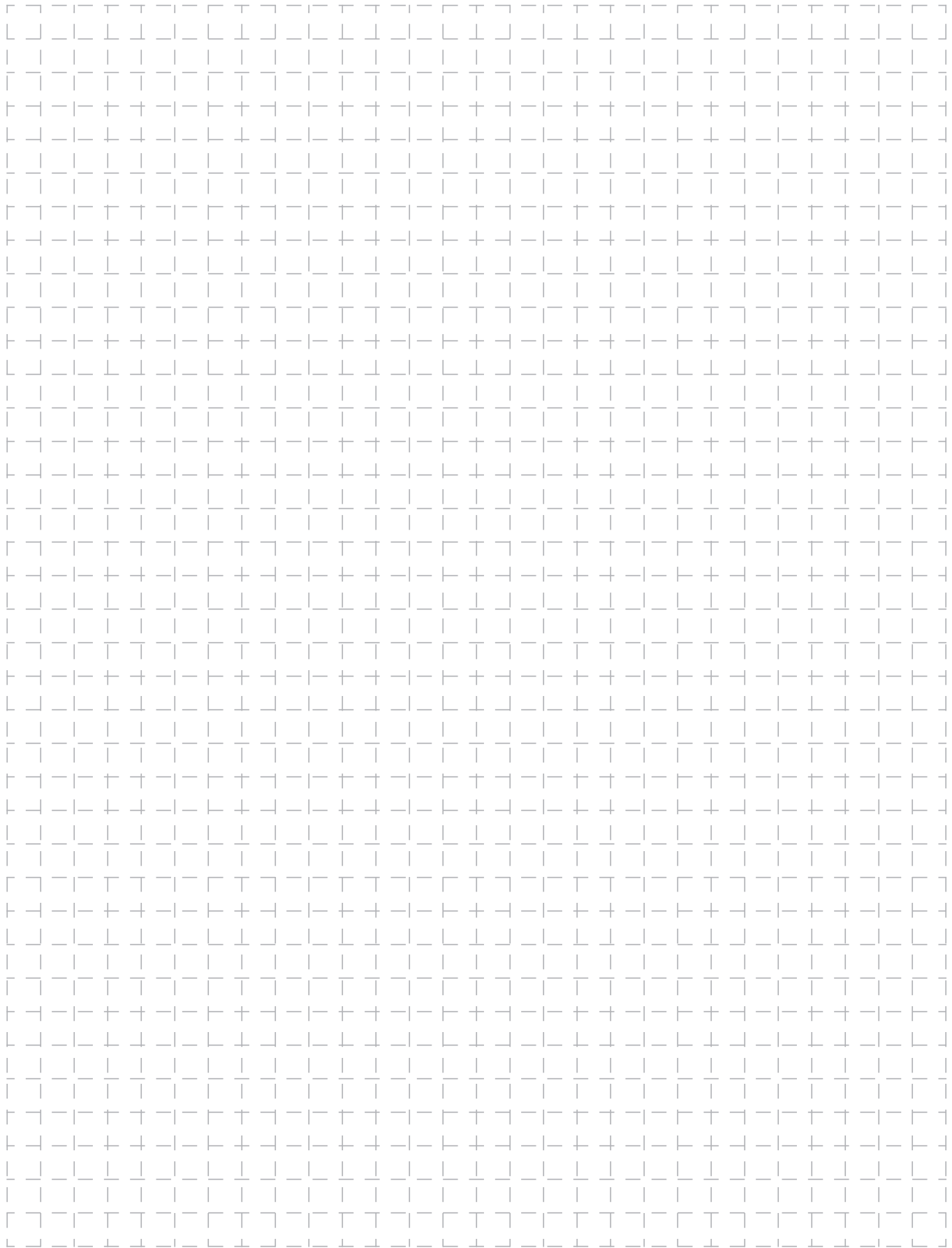


Table of Dimensions

Pins	Model	A	B	C	D	E	F	G
4	XF2U-0415-3A	1.5	3.5	4.0	2.6	1.8	3.1	3.9
6	XF2U-0615-3A	2.5	4.5	5.0	3.6	2.8	4.1	4.9
8	XF2U-0815-3A	3.5	5.5	6.0	4.6	3.8	5.1	5.9
11	XF2U-1115-3A	5.0	7.0	7.5	6.1	5.3	6.6	7.4
14	XF2U-1415-3A	6.5	8.5	9.0	7.6	6.8	8.1	8.9
18	XF2U-1815-3A	8.5	10.5	11.0	9.6	8.8	10.1	10.9
20	XF2U-2015-3A	9.5	11.5	12.0	10.6	9.8	11.1	11.9
24	XF2U-2415-3A	11.5	13.5	14.0	12.6	11.8	13.1	13.9
27	XF2U-2715-3A	13.0	15.0	15.5	14.1	13.3	14.6	15.4
30	XF2U-3015-3A	14.5	16.5	17.0	15.6	14.8	16.1	16.9
32	XF2U-3215-3A	15.5	17.5	18.0	16.6	15.8	17.1	17.9
40	XF2U-4015-3A	19.5	21.5	22.0	20.6	19.8	21.1	21.9



All sales are subject to Omron Electronic Components LLC standard terms and conditions of sale, which can be found at http://www.components.omron.com/components/web/webfiles.nsf/sales_terms.html

ALL DIMENSIONS SHOWN ARE IN MILLIMETERS.
To convert millimeters into inches, multiply by 0.03937. To convert grams into ounces, multiply by 0.03527.

OMRON[®]

**OMRON ELECTRONIC
COMPONENTS LLC**

55 E. Commerce Drive, Suite B
Schaumburg, IL 60173

847-882-2288

OMRON ON-LINE

Global - <http://www.omron.com>

USA - <http://www.components.omron.com>