



**Load for solar inverter,  
Compact size,  
1 Form A 22A/33A  
power relays**

LF-G RELAYS (ALFG)



**RoHS compliant**

Protective construction: Flux-resistant type

### FEATURES

#### 1. High capacity

High capacity control possible at 22A/33A (High capacity type) 250V AC rating in compact size (L: 15.7 × W: 30.1 × H: 23.3 mm L: .618 × W: 1.185 × H: .917 inch)

#### 2. Contact gap: 1.5 mm .059 inch and 1.8 mm\*\*\* .071 inch

Compliant with European photovoltaic standard (IEC62109\* and VDE0126\*\*).

\* Safety standard of PV power inverter  
 \*\* German safety standard of PV power inverter  
 \*\*\* Due to addition of altitude stipulation (2,000 m 6,561.68 ft or more) to IEC62109.

EN61810-1 certified: 2.5 kV surge breakdown voltage (between contacts)

#### 3. Long insulation distance

Creepage distance between contact and coil terminal: Min. 9.5 mm .354 inch  
 Clearance distance between contact and coil terminal: Min. 6.5 mm .256 inch  
 Surge breakdown voltage: 6 kV

#### 4. Coil holding voltage contributes to saving energy of equipment

The coil holding voltage can be reduced up to 35%V of the nominal coil voltage (Ambient temperature: 20°C 68°F).  
 Power consumption at the lowest coil holding voltage: 170 mW equivalent

\*Coil holding voltage is the coil voltage after 100 ms from the applied nominal coil voltage.

\*When the ambient temperature during use is 85°C 185°F, make the coil holding voltage between 45% and 80%V of the nominal coil voltage.

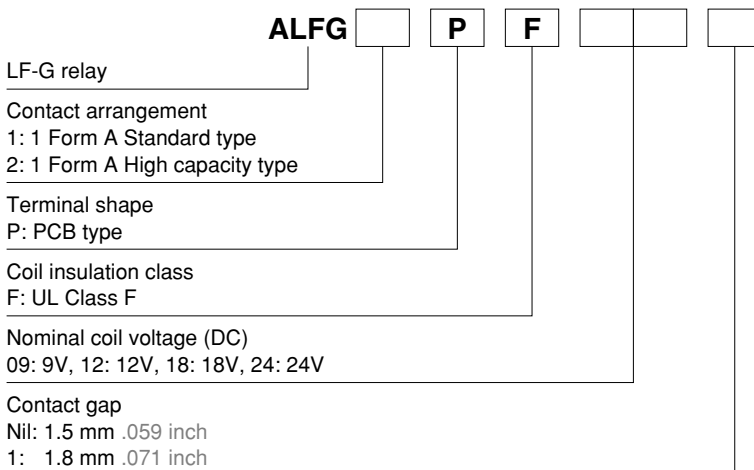
#### 5. Conforms to various safety standards

UL/C-UL and VDE approved

### TYPICAL APPLICATIONS

1. Photovoltaic power generation systems (Solar inverter)
2. Uninterruptible Power Supplies (UPS)
3. Home appliances
4. Office equipment

### ORDERING INFORMATION



Note: Certified by UL/C-UL and VDE

### TYPES

Contact arrangement	Nominal coil voltage	Part No.			
		Contact Gap 1.5 mm .059 inch type		Contact Gap 1.8 mm .071 inch type	
		Standard type	High capacity type	Standard type	High capacity type
1 Form A	9V DC	ALFG1PF09	ALFG2PF09	ALFG1PF091	ALFG2PF091
	12V DC	ALFG1PF12	ALFG2PF12	ALFG1PF121	ALFG2PF121
	18V DC	ALFG1PF18	ALFG2PF18	ALFG1PF181	ALFG2PF181
	24V DC	ALFG1PF24	ALFG2PF24	ALFG1PF241	ALFG2PF241

Standard packing: Carton: 50 pcs.; Case: 200 pcs.

# RATING

## 1. Coil data

Nominal coil voltage	Pick-up voltage (at 20°C 68°F) (Initial)	Drop-out voltage (at 20°C 68°F) (Initial)	Nominal operating current [±10%] (at 20°C 68°F)	Coil resistance [±10%] (at 20°C 68°F)	Nominal operating power	Max. applied voltage (at 20°C 68°F)
9V DC	70%V or less of nominal voltage	10%V or more of nominal voltage	155mA	58Ω	1,400mW	120%V of nominal voltage
12V DC			117mA	103Ω		
18V DC			78mA	230Ω		
24V DC			59mA	410Ω		

## 2. Specifications

Characteristics	Item	Specifications		
		Standard type		High capacity type
		Contact Gap 1.5 mm .059 inch type Contact Gap 1.8 mm .071 inch type	Contact Gap 1.5 mm .059 inch type	Contact Gap 1.8 mm .071 inch type
Contact	Arrangement	1 Form A		
	Contact resistance (Initial)	Max. 100 mΩ (By voltage drop 6 V DC 1A)		
	Contact material	AgSnO <sub>2</sub> type		
Rating	Nominal switching capacity	22A 250V AC	31A 250V AC	33A 250V AC
	Max. switching power	5,500VA	7,750VA	8,250VA
	Max. switching voltage	250V AC		
	Max. switching current	22A (AC)	31A (AC)	33A (AC)
	Nominal operating power	1,400mW		
	Min. switching capacity (Reference value)*1	100mA 5V DC		
Electrical characteristics	Insulation resistance (Initial)	Min. 1,000MΩ (at 500V DC) Measurement at same location as "Breakdown voltage" section.		
	Breakdown voltage (Initial)	Between open contacts	2,500 Vrms for 1 min. (Detection current: 10 mA)	
		Between contact and coil	4,000 Vrms for 1 min. (Detection current: 10 mA)	
	Surge breakdown voltage*2 (Between contact and coil) (Initial)	6,000 V		
	Coil holding voltage*3	35 to 120%V (contact carrying current: 22A, at 20°C 68°F) 45 to 80%V (contact carrying current: 22A, at 85°C 185°F)	35 to 120%V (contact carrying current: 31A, at 20°C 68°F) 45 to 80%V (contact carrying current: 31A, at 85°C 185°F)	35 to 120%V (contact carrying current: 33A, at 20°C 68°F) 45 to 80%V (contact carrying current: 33A, at 85°C 185°F)
	Operate time (at 20°C 68°F) (Initial)	Max. 20 ms (at nominal coil voltage excluding contact bounce time.)		
Release time (at 20°C 68°F) (Initial)	Max. 10 ms (at nominal coil voltage excluding contact bounce time, without diode)			
Mechanical characteristics	Shock resistance	Functional	Min. 100 m/s <sup>2</sup> (Half-wave pulse of sine wave: 11 ms; detection time: 10μs.)	
		Destructive	Min. 1,000 m/s <sup>2</sup> (Half-wave pulse of sine wave: 6 ms.)	
	Vibration resistance	Functional	10 to 55 Hz at double amplitude of 1.5 mm (Detection time: 10μs.)	
		Destructive	10 to 55 Hz at double amplitude of 1.5 mm	
Expected life	Mechanical	Contact Gap 1.5 mm .059 inch type: Min. 10 <sup>6</sup> (at 180 times/min.) Contact Gap 1.8 mm .071 inch type: Min. 5×10 <sup>5</sup> (at 180 times/min.)		
	Electrical	Resistive load	22A 250V AC, Min. 3×10 <sup>4</sup> (at 20 times/min.)	—
		Inductive load	Destructive: 22A 250V AC (cosφ = 0.8), Min. 3×10 <sup>4</sup> (on:off = 0.1s:10s) Over load: 35A 250V AC (cosφ = 0.8), Min. 50 (on:off = 0.1s:10s)	Destructive: 31A 250V AC (cosφ = 0.8), Min. 3×10 <sup>4</sup> (on:off = 0.1s:10s) Over load: 47A 250V AC (cosφ = 0.8), Min. 50 (on:off = 0.1s:10s)
Conditions	Conditions for operation, transport and storage*4	Ambient temperature: -40°C to +60°C -40°F to +140°F (When nominal coil voltage applied) -40°C to +85°C -40°F to +185°F (Coil holding voltage is when 45 to 80%V of nominal coil voltage is applied.) Humidity: 5 to 85% R.H. (Not freezing and condensing at low temperature) Air pressure: 86 to 106 kPa		
Unit weight	Approx. 23 g .81 oz			

Notes: \*1. This value can change due to the switching frequency, environmental conditions, and desired reliability level, therefore it is recommended to check this with the actual load.

\*2. Wave is standard shock voltage of ±1.2×50μs according to JEC-212-1981

\*3. Coil holding voltage is the coil voltage after 100 ms from the applied nominal coil voltage.

\*4. The upper limit of the ambient temperature is the maximum temperature that can satisfy the coil temperature rise value. Refer to Usage, transport and storage conditions in NOTES.

# REFERENCE DATA

## 1. Standard type (Contact Gap 1.5 mm .059 inch type) (Contact Gap 1.8 mm .071 inch type)

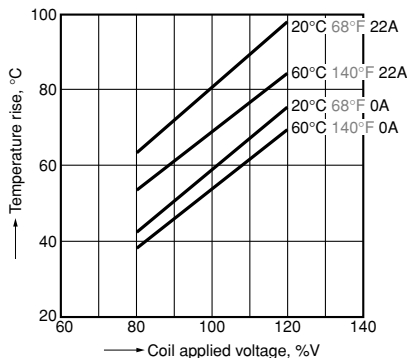
### 1. Coil temperature rise

Sample: ALFG1PF09, ALFG1PF091, 6 pcs.

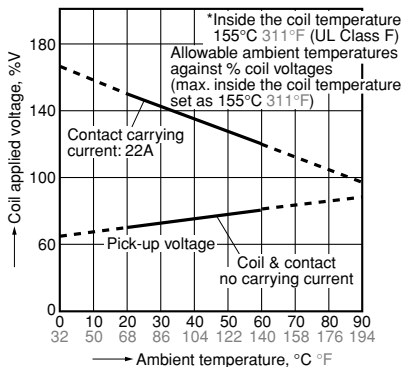
Point measured: coil inside

Ambient temperature: 20°C 68°F, 60°C 140°F

Contact carrying current: 22A



### 2. Ambient temperature characteristics and coil applied voltage



### 3. Electrical life test

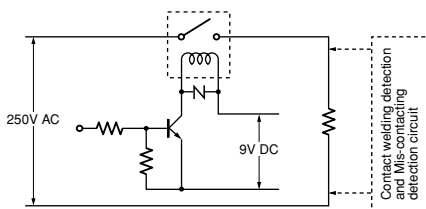
(22A 250V AC Resistive load)

Sample: ALFG1PF09, ALFG1PF091, 6 pcs.

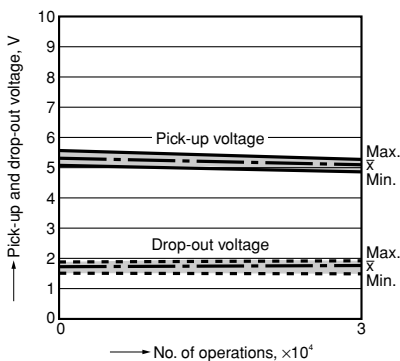
Operation frequency: ON:OFF = 1.5s:1.5s

Ambient temperature: 85°C 185°F

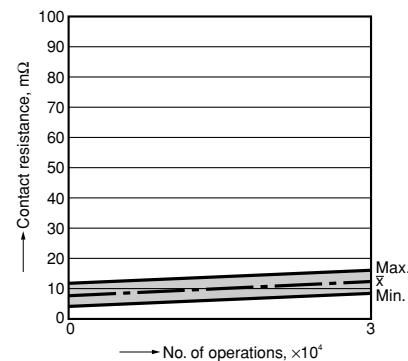
Circuit:



#### Change of pick-up and drop-out voltage



#### Change of contact resistance



### 4. Electrical life test

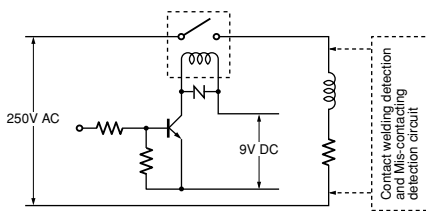
(22A 250V AC cosφ = 0.8 Inductive load)

Sample: ALFG1PF09, ALFG1PF091, 6 pcs.

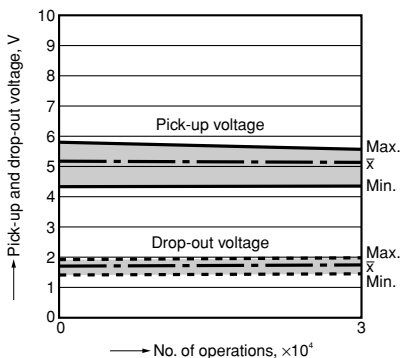
Operation frequency: ON:OFF = 0.1s:10s

Ambient temperature: 85°C 185°F

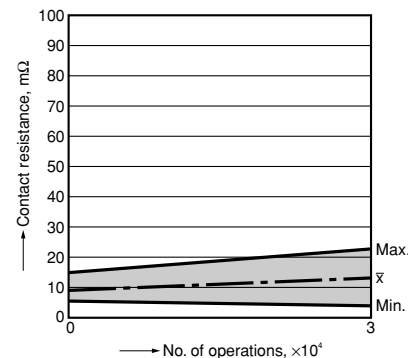
Circuit:



#### Change of pick-up and drop-out voltage



#### Change of contact resistance

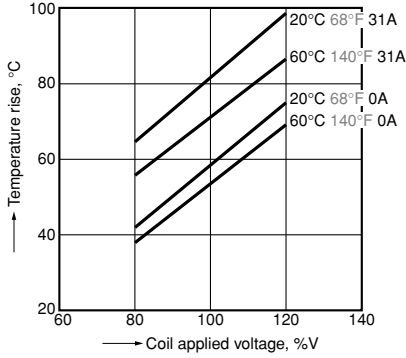


# LF-G (ALFG)

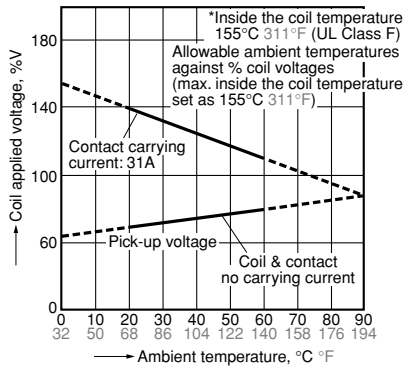
## 2. High capacity type (Contact Gap 1.5 mm .059 inch type)

### 1. Coil temperature rise

Sample: ALFG2PF09, 6 pcs.  
 Point measured: coil inside  
 Ambient temperature: 20°C 68°F, 60°C 140°F  
 Contact carrying current: 31A



### 2. Ambient temperature characteristics and coil applied voltage

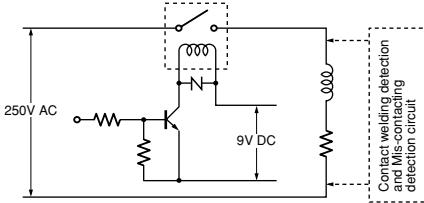


### 3. Electrical life test

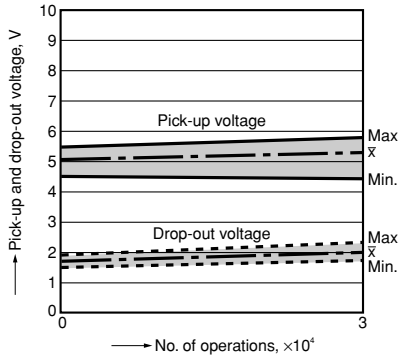
(31A 250V AC  $\cos\phi = 0.8$  Inductive load)

Sample: ALFG2PF09, 6 pcs.  
 Operation frequency: ON:OFF = 0.1s:10s  
 Ambient temperature: 85°C 185°F

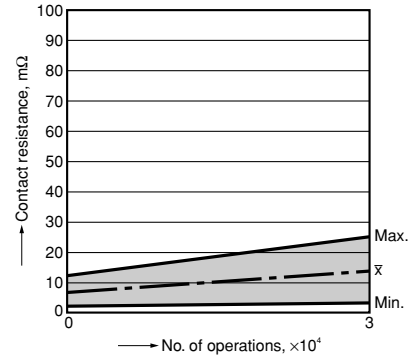
Circuit:



### Change of pick-up and drop-out voltage



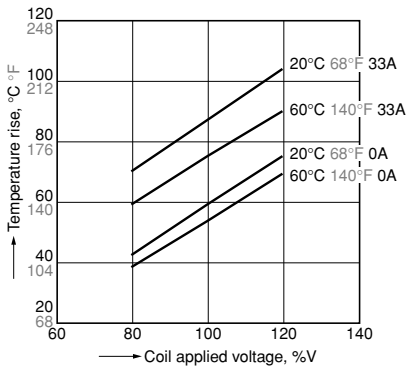
### Change of contact resistance



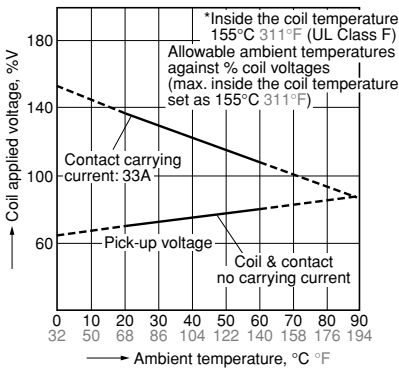
## 3. High capacity type (Contact Gap 1.8 mm .071 inch type)

### 1. Coil temperature rise

Sample: ALFG2PF091, 6 pcs.  
 Point measured: coil inside  
 Ambient temperature: 20°C 68°F, 60°C 140°F  
 Contact carrying current: 33A



### 2. Ambient temperature characteristics and coil applied voltage

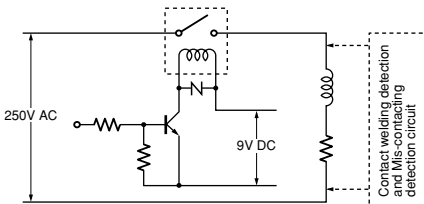


### 3. Electrical life test

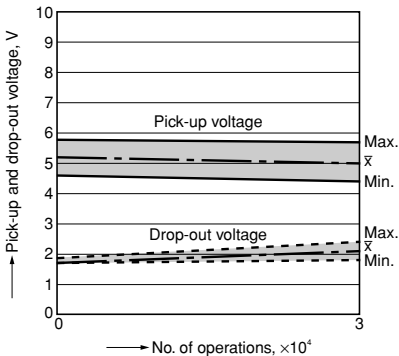
(33A 250V AC  $\cos\phi = 0.8$  Inductive load)

Sample: ALFG2PF091, 6 pcs.  
 Operation frequency: ON:OFF = 0.1s:10s  
 Ambient temperature: 85°C 185°F

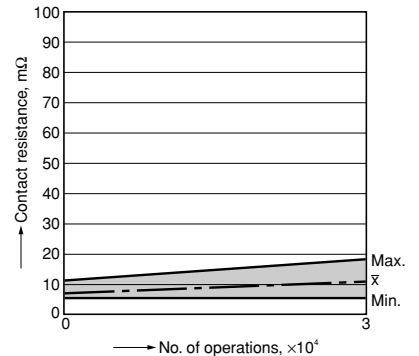
Circuit:



### Change of pick-up and drop-out voltage



### Change of contact resistance



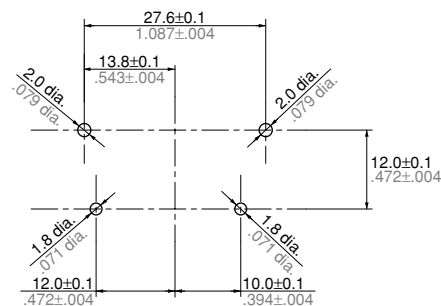
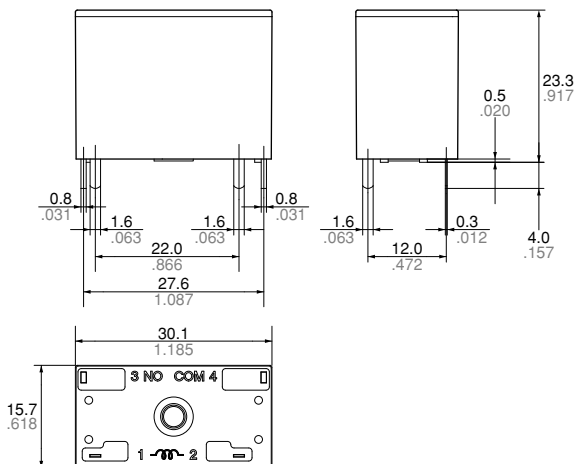
# DIMENSIONS (mm inch)

The CAD data of the products with a **CAD Data** mark can be downloaded from: <http://industrial.panasonic.com/ac/e/>

**CAD Data**

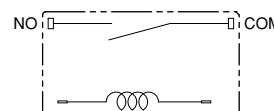
### External dimensions

### PC board pattern (Bottom view)



Tolerance: ±0.1 ±0.04

### Schematic (Bottom view)



**Dimension:**  
 Less than 1mm .039inch:  
 Min. 1mm .039inch less than 3mm .118 inch: ±0.2 ±0.08  
 Min. 3mm .118 inch: ±0.3 ±0.12

**General tolerance**  
 ±0.1 ±0.04  
 ±0.2 ±0.08  
 ±0.3 ±0.12

## SAFETY STANDARDS

Item	UL/C-UL (Recognized)				VDE (VDE0435) (Certified)				
	File No.	Contact rating	Temp.	Cycles	File No.	Contact rating	Temp.	Cycles	
Standard type (Contact GAP 1.5 mm/1.8 mm .059 inch/.071 inch)	E43028	22A 277V AC General Use	85°C 185°F	3 × 10 <sup>4</sup>	40023067	22A 250V AC (cosφ=0.8)	85°C 185°F	3 × 10 <sup>4</sup>	
		22A 277V AC Resistive	85°C 185°F	3 × 10 <sup>4</sup>	—	—	—	—	
		22A 30V DC Resistive	40°C 104°F	3 × 10 <sup>4</sup>	—	—	—	—	
High capacity type	1.5 mm .059 inch	E43028	31A 277V AC General Use	85°C 185°F	3 × 10 <sup>4</sup>	40023067	31A 250V AC (cosφ=0.8)	85°C 185°F	3 × 10 <sup>4</sup>
	1.8 mm .071 inch	E43028	33A 277V AC General Use 33A 30V DC Resistive	85°C 185°F 40°C 104°F	3 × 10 <sup>4</sup> 3 × 10 <sup>4</sup>	40023067	33A 250V AC (cosφ=0.8)	85°C 185°F	3 × 10 <sup>4</sup>

## EN/IEC VDE Certified INSULATION CHARACTERISTIC (IEC61810-1)

Item	Characteristic
Clearance/Creepage distance (IEC61810-1)	Min. 5.5mm/5.5mm
Category of protection (IEC61810-1)	RT II
Tracking resistance (IEC60112)	PTI 175
Insulation material group	III a
Over voltage category	III
Rated voltage	250V
Pollution degree	2
Type of insulation (Between contact and coil)	Reinforced insulation
Type of insulation (Between open contacts)	Full disconnection

**NOTES**

1. For cautions for use, please read "GENERAL APPLICATION GUIDELINES".

**2. Usage, transport and storage conditions**

1) Temperature:

–40 to +60°C –40 to +140°F (When nominal coil voltage applied)

–40 to +85°C –40 to +185°F (When coil holding voltage is 45% to 80% of the nominal coil voltage)

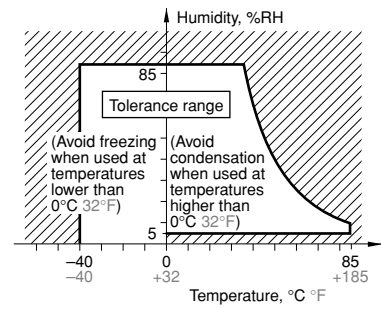
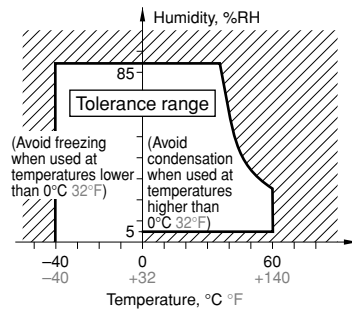
2) Humidity: 5 to 85% RH

(Avoid freezing and condensation.)

The humidity range varies with the temperature. Use within the range indicated in the graph below.

3) Atmospheric pressure: 86 to 106 kPa

Temperature and humidity range for usage, transport, and storage



\* –40 to +85°C –40 to +185°F (When 45% to 80%V of coil holding voltage)

---

Please contact .....

**Panasonic Corporation**

Electromechanical Control Business Division

■ 1006, Oaza Kadoma, Kadoma-shi, Osaka 571-8506, Japan  
[industrial.panasonic.com/ac/e/](http://industrial.panasonic.com/ac/e/)

**Panasonic**<sup>®</sup>

©Panasonic Corporation 2016