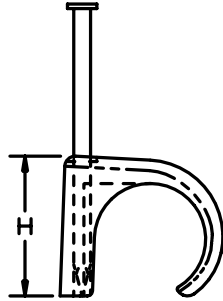
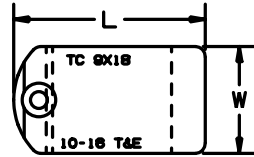
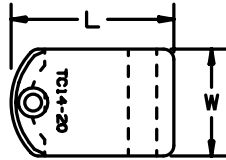
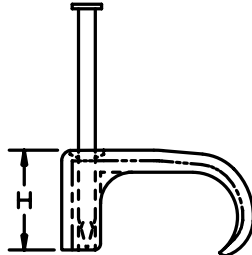


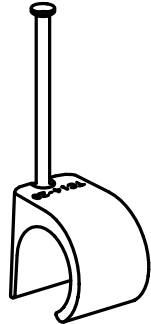
THIS COPY IS PROVIDED ON A RESTRICTED BASIS AND IS NOT TO BE USED IN ANY WAY DETRIMENTAL TO THE INTERESTS OF PANDUIT CORP.



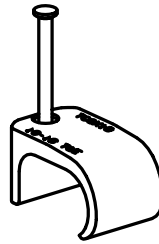
SINGLE



DOUBLE



FULL SCALE
TC14-20



FULL SCALE
TC9X18

PANDUIT PART NO. *	TYPE	CABLE DIA. in./ (mm)	DIMENSIONS - in./ (mm)			NAIL LENGTH in./ (mm)	WEIGHT lbs / 100 (g) / pcs.
			H	L	W		
TC3-5	S	0.13 (3.3)	0.20 (5.1)	0.29 (7.4)	0.23 (5.8)	0.79 (20.1)	.06 (28)
TC4-6	S						
TC5-7	S	0.21 (5.3)	0.31 (7.9)	0.39 (9.9)	0.23 (5.8)	0.79 (20.1)	.08 (36)
TC7-10	S	0.27 (6.9)	0.38 (9.7)	0.49 (12.5)	0.35 (8.9)	1.00 (25.4)	.18 (80)
TC10-14	S	0.35 (8.9)	0.51 (13.0)	0.59 (14.9)	0.45 (11.4)	1.18 (30.0)	.30 (137)
TC14-20	S	0.52 (13.2)	0.67 (17.0)	0.79 (20.6)	0.54 (13.7)	1.39 (35.1)	.51 (230)
TC3X5	D						
TC4X6	D						
TC5X8	D	0.20 X 0.31 (5.1) (7.9)	0.30 (7.6)	0.54 (13.7)	0.27 (6.8)	1.00 (25.4)	.20 (80)
TC6X9	D						
TC6X10	D	0.23 X 0.38 (5.3) (9.7)	0.34 (8.6)	0.62 (15.7)	0.34 (8.6)	1.00 (25.4)	.23 (105)
TC7X14	D	0.25 X 0.48 (6.4) (11.7)	0.36 (9.1)	0.70 (17.8)	0.43 (10.9)	1.00 (25.4)	.28 (127)
TC8X15	D						
TC9X18	D	0.37 X 0.65 (9.4) (16.5)	0.50 (12.7)	0.89 (22.6)	0.52 (13.2)	1.18 (30.0)	.41 (184)

NOTES:

1. SEE CURRENT PRICE SHEET FOR PART NUMBER SUFFIX DESIGNATION FOR PACKAGE SIZE AND PART COLOR.
2. CLIP: WEATHER RESISTANT POLYPROPYLENE;
NAIL: ZINC PLATED, HARDENED STEEL.

(DIMENSIONS IN PARENTHESES ARE METRIC.)

CPD FILENAME/LAYER G00239JQ_PB_TACKCLIPS_00

PANDUIT

CORP. TINLEY PARK, ILLINOIS

TACK CLIPS

UNLESS OTHERWISE SPECIFIED,
DIMENSIONAL TOLERANCES ARE:
(.X) ± 0.1 (2.5) (.XXX) ± 0.020 (.5)
(.XX) ± 0.05 (1.3) ANGLES ± 5°

UNLESS OTHERWISE SPECIFIED,
ALL DIMENSIONS ARE GIVEN
IN INCHES, THIRD ANGLE PROJECTION.

DRAWN BY LGG

MAT'L:

SCALE 1.25:1

DATE 9/4/02

SEE NOTE 2

DRAWING NO.

G00239JQ

CPD

A

SIZE

REV	DATE	BY	CHK	DESCRIPTION	ECN - R	CUST	SUP
R	9-4-02	LGG		INITIAL RELEASE. REPLACE G-02269	G00239JQ	R	