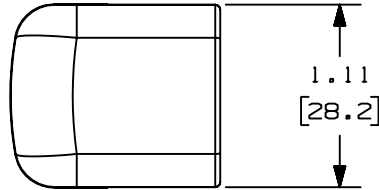


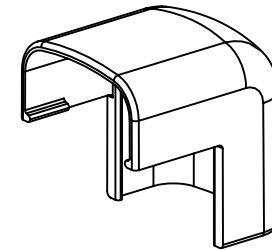
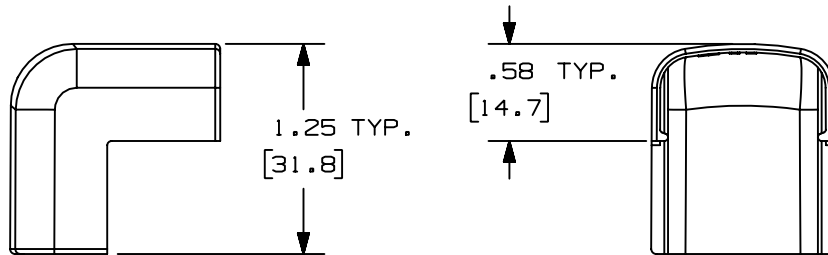
THIS COPY IS PROVIDED ON A RESTRICTED BASIS AND IS NOT TO BE USED IN ANY WAY DETRIMENTAL TO THE INTERESTS OF PANDUIT CORP.



$\triangle B$	PANDUIT P/N	WEIGHT
$\triangle C$	OCF5	0.96 LB/100 PCS. (437g/100 PCS.)

$\triangle D$ NOTES:

1. SEE CURRENT CATALOG FOR ADDITIONAL PART NUMBER SUFFIXES TO INDICATE COLOR AND OR PACKAGE QUANTITY.
2. DIMENSIONS IN PARENTHESIS ARE IN METRIC.



$\triangle E$

CAD FILENAME/LAYERS D34474BB_DC_OCF5_01.prt

								PANDUIT CORP. TINLEY PARK, ILLINOIS	
6	7-3-02	JHNR	MHI	F. REVISED MATERIAL IN DRAWING TITLE BLOCK.	16866	RGRD	RGRD	OUTSIDE CORNER FITTING (OCF5) CUSTOMER DRAWING	
5	8-28-00	MSO	HIW	E. REVISED AND REDRAWN ON CAD.	16866	HIW	HIW	UNLESS OTHERWISE SPECIFIED, DIMENSIONAL TOLERANCES ARE: (.X) ± (.XXX) ± (.XX) ± .03(.8) ANGLES ±	
4	10-3-91	DW	CF	D. REVISED NOTE AND REMOVED COLOR FROM DRAWING.	16866		CF	UNLESS OTHERWISE SPECIFIED, ALL DIMENSIONS ARE GIVEN IN INCHES, THIRD ANGLE PROJECTION.	
3	2-28-91	DW	CF	C. REVISED COLORS: OMIT BG, LI, LG. ADDED INT. WHITE AND INT. GRAY.	16866		WJB	SCALE FULL	
2	12-2-87	LDB	WJB	B. ADDED PART NUMBERS OCF5E1 AND OCF5L1.	16866		WJB	DRAWING NO. SS-16866	
1	5-14-82	KJS	JK	A. POLYSTYRENE WAS ABS.			JAK	DWB A	
R	9-14-81	KJS	HP	DRAWING RELEASED			HP	SIZE	
REV	DATE	BY	CHK	DESCRIPTION	ECN - R	CUST	SUP		

DRAWN BY: KJS MAT'L: ABS $\triangle F$

DATE: 9-10-81

CHK'D: JK $\triangle A$