




MTRTH and MTRTLS TOOL CHANGEOVER KITS INSTALLATION INSTRUCTIONS

© Panduit Corp. 2007

CHANGEOVER KITS:

KMTRTH	Changeover kit allows for installation of heavy (H) cross-section MRT and MRS style ties in MTRTLS tool. Kit comes complete with one setshear finger (H), one anvil (H), three screws, thread-lock tube and installation instructions.
KMTRTLS	Changeover kit allows for installation of standard (S) and light-heavy (LH) cross-section MRT and MRS style ties in MTRTH tool. Kit comes complete with one setshear finger (LS), two anvils (LH and S), three screws, thread-lock tube and installation instructions.

SAFETY PRACTICES

	ALWAYS wear safety glasses when using this tool.
	DO NOT place fingers near cutting blade during tool actuation. Fingers may be pinched or injured by cutter blade.
	DO NOT use tool on live electrical sources.

TO REPLACE ANVIL

Remove two screws holding Anvil onto the tool. A 3/32" Allen Wrench will be required. The screws may be very tight as they have been installed with Loctite®. Once the screws are removed, slide the Anvil towards the front of the tool and downward away from the tool. Set aside old Anvil. ** Place new Anvil onto bottom of the tool. The Anvil must straddle the two plates and have the slots toward the rear. When the Anvil is slid backwards, the slots must engage the pins. If done correctly, the hole on each side of the Anvil will align with a tapped mounting hole below. Replace the screws applying a drop of Loctite® to each screw. See pictures below.

**** IF SETSHEAR FINGER IS TO BE REPLACED AS WELL, NOW IS THE TIME TO REPLACE PER THE INSTRUCTIONS BELOW.**

TO REPLACE SETSHEAR FINGER

Remove a single screw holding the Setshear Finger up onto the Sliding Detent Assembly. Use a 1/16" Allen Wrench to remove the screw. The screw may be tight as it has been installed with Loctite®. Once the screw is removed, slide the Setshear Finger toward the front of the tool. This should disengage it from the Sliding Detent Assembly. Pull the Finger down out of the bottom of the tool. Installation is the reverse of these steps. When replacing the Setshear Finger, the notch on the flat surface of the finger must engage the retaining tab on the Sliding Detent Assembly. See pictures below.

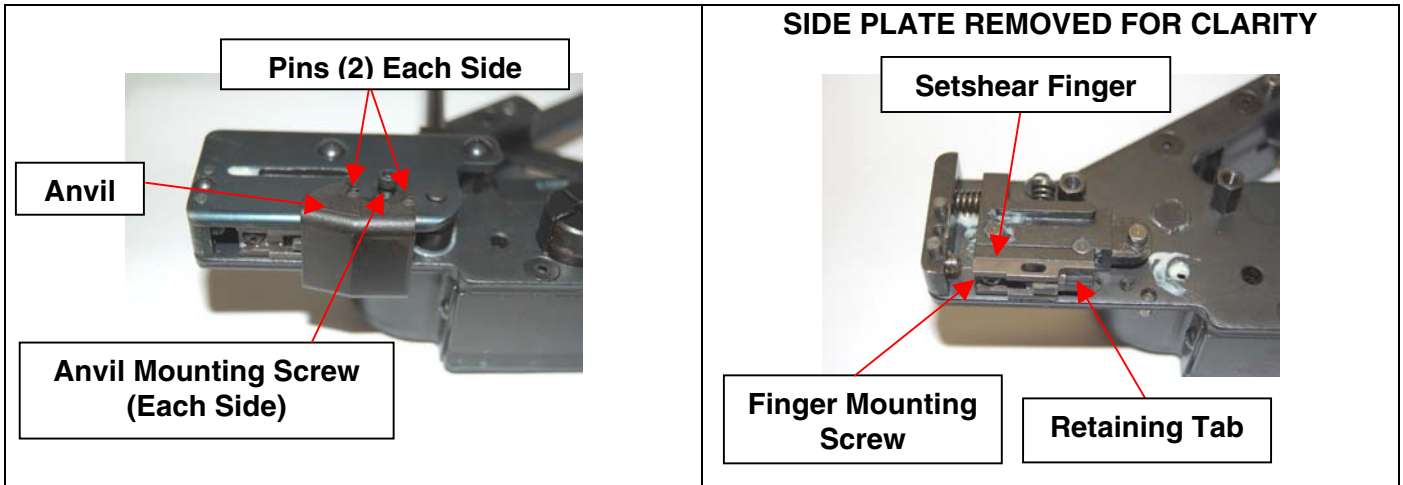
WHEN COMPLETE, THE LOCATING SET SCREW ON THE FRONT OF THE TOOL WILL NEED TO BE ADJUSTED PRIOR TO TOOL USE.

® The above names and products are the registered trademarks of their respective corporations.

Website: www.panduit.com
E-mail: cs@panduit.com



Technical Support:
See Page 4 for contact
information.



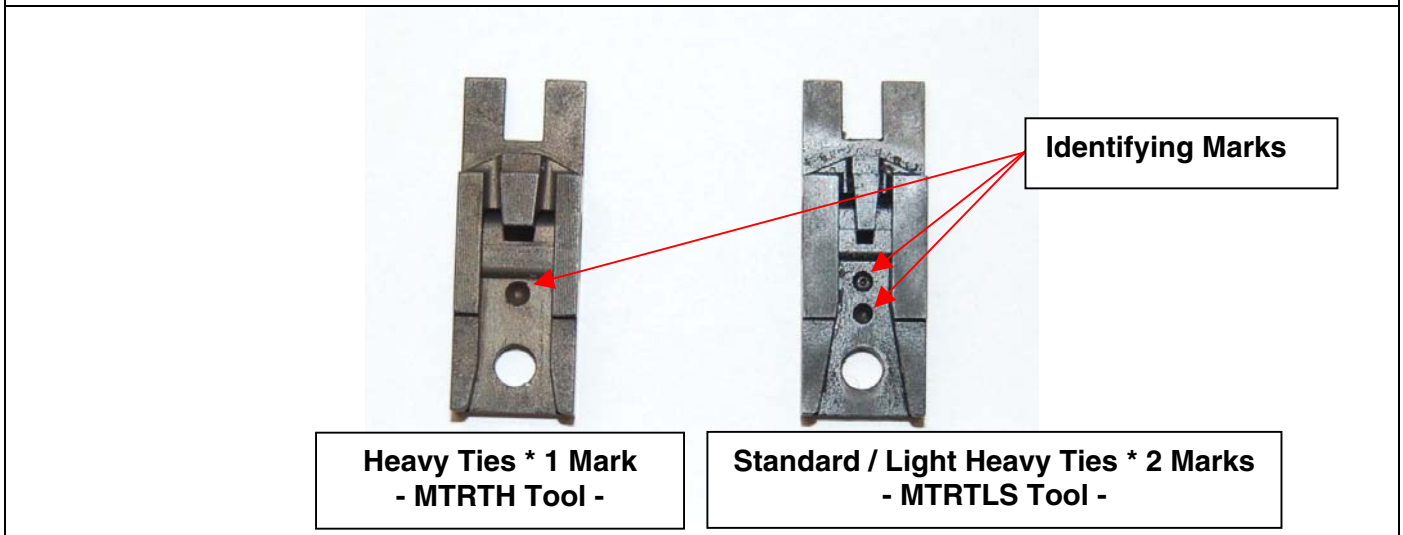
INSTALLATION OF ANVIL OR SETSHEAR FINGER

TO REPLACE ANVIL OR SETSHEAR FINGER:

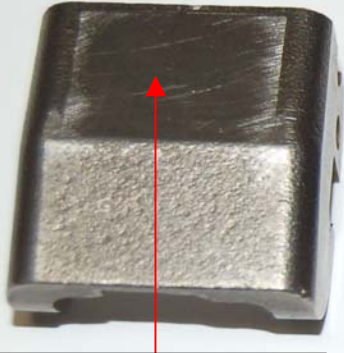
NOTE: Replace or install Anvil or Setshear Finger per table below.

	MTRTH TOOL		MTRTLS TOOL	
	HEAVY	STANDARD	LIGHT HEAVY	
ANVIL MARKS	0	1	2	
SETSHEAR FINGER MARKS	1	2	2	

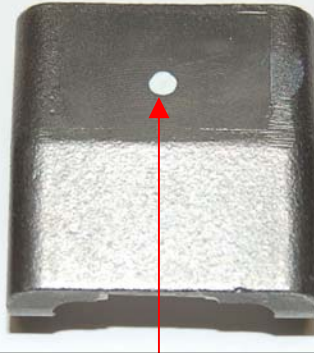
SETSHEAR FINGER DIFFERENTIATION



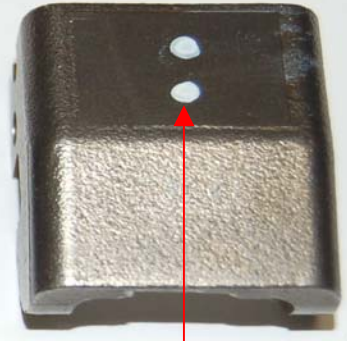
ANVIL DIFFERENTIATION



**Heavy Ties * No Mark
- MTRTH Tool -**

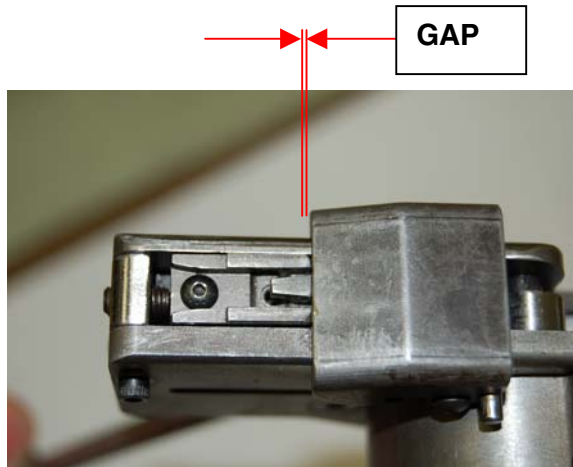
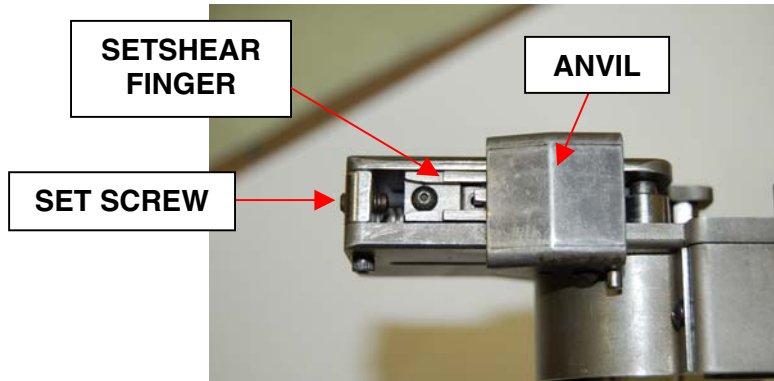


**Standard Ties * 1 Mark
- MTRTLS Tool -**



**Light Heavy Ties * 2 Marks
- MTRTLS Tool -**

SETSHEAR FINGER STOP ADJUSTMENT



After each Anvil change, it may be necessary to adjust the Set Screw Stop in the front of the tool. This stop is used for setting how closely the tie tail is cut off. With Cut-Off Handle moved forward, the Set Screw is turned inward or outward to adjust gap between Setshear Finger and Anvil. (CW from tool front moves Finger backwards, CCW moves Finger forward to front of tool.) To set the Set Screw, have Cut-Off Handle all the way forward. Turn the Set Screw CW until the Setshear Finger just touches the Anvil. Back the Set Screw out 1/4 turn by turning CCW. Recheck clearance. The Setshear Finger must not hit or scrape the Anvil. A gap that is too large will cause poor, or no tie cut-offs.

NOTE: SETSHEAR FINGER MUST CLEAR ANVIL.

CONTACT INFORMATION • For Technical Support:

PANDUIT USA, Tinley Park, IL
USA Tel: 888-506-5400, ext. 3255 • Fax: 630-759-7532
Website: www.panduit.com • E-mail: cs@panduit.com

PANDUIT Latino America, Guadalajara, Jalisco, Mexico
Latino America Tel.: 52 (333) 666 2501 • Fax.: 52 (333) 666 2510
Website: www.panduit.com • E-mail: cs-la@panduit.com

PANDUIT Europe, EMEA Headquarters
West World, Westgate, London
England Tel: 44 208 601 7200 • Fax: 44 208 601 7209
Website: www.panduit.com/emea • E-mail: cs-emea@panduit.com
Deutsch Tel: 069 9509 6129 • Fax: 069 9509 6130
Français Tel: 01 4191 8572 • Fax: 01 4191 8573
Spain Tel: 91 377 8107 • Fax: 91 377 8108

PANDUIT Australia, Melbourne (Head Office)
Dandenong, VIC
Aus. Tel: 1-800-PANDUIT / 1-800-726-384 • Fax: 1-800-637-889
Email: cs-us@panduit.com

PANDUIT United Arab Emirates
Dubai Internet City, Dubai
Tel: +971 4 3625435 /6 • Fax: +971 4 3908830
E-mail: cs-uae@panduit.com

PANDUIT China, Beijing
Xuanwumen Xidajie Xicheng District
Beijing, China
Tel: 8610 6641 0371 • Fax: 8610 6641 0375
Toll Free Customer Service - North China: 10800 6500 211 • South China: 10800 2650 211
E-mail: cs-ap@panduit.com

PANDUIT Singapore – Sales Office
Singapore, Republic of Singapore
Tel: 65 6379 6700 • Fax: 65 6379 6759
E-mail: cs-ap@panduit.com