

THIS COPY IS PROVIDED ON A RESTRICTED BASIS AND IS NOT TO BE USED IN ANY WAY DETRIMENTAL TO THE INTERESTS OF PANDUIT CORP.

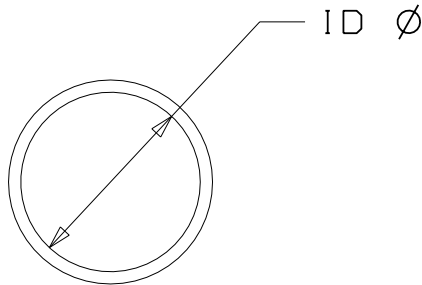
HSTTP 12 - M

PANDUIT NUMBERING SYSTEM

LENGTH M = 1000' MIN.
 D = 500' MIN.
 TL = 250' MIN.
 C = 100' MIN.

EXPANDED I.D. TUBING SIZE.

PVC THIN WALL HEAT SHRINK TUBING.



PANDUIT PART NUMBER	Min. RECOVERED ID	Max. RECOVERED ID	NOMINAL REC WALL THICKNESS [in. (mm)]
HSTTP05-M	.046 (1.2)	.023 (.6)	.020 (0.5)
HSTTP06-M	.063 (1.6)	.031 (.8)	.020 (0.5)
HSTTP09-M	.093 (2.4)	.046 (1.2)	.025 (0.6)
HSTTP12-M	.125 (3.2)	.062 (1.6)	.025 (0.6)
HSTTP19-M	.187 (4.8)	.093 (2.4)	.025 (0.6)
HSTTP25-M	.250 (6.4)	.125 (3.2)	.025 (0.6)
HSTTP38-D	.375 (9.5)	.187 (4.8)	.030 (0.8)
HSTTP50-D	.500 (12.7)	.250 (6.4)	.030 (0.8)
HSTTP75-C	.750 (19.0)	.375 (9.5)	.035 (0.9)
HSTTP100-TL	1.000 (25.4)	.500 (12.7)	.040 (1.0)
HSTTP150-C	1.500 (38.1)	.750 (19.0)	.045 (1.1)
HSTTP200-C	2.000 (50.8)	1.000 (25.4)	.050 (1.3)

NOTES:

1. MATERIAL: CROSS-LINKED, FLEXIBLE, HIGHLY FLAME RETARDANT.
2. COLOR: BLACK
3. SHRINK RATIO: 2:1
4. SHRINK RATIOS ARE APPROXIMATIONS; PLEASE REFER TO DIMENSIONAL TABLE FOR THE EXACT MINIMUM EXPANDED AND MAXIMUM RECOVERED I.D.'S
5. "ALL WARRANTIES, INCLUDING MERCHANTABILITY AND FITNESS FOR A PARTICULAR PURPOSE, ARE EXCLUDED. (USER IS RESPONSIBLE TO DETERMINE SUITABILITY OF PRODUCT FOR INTENDED USE.)"

DIMENSIONS IN BRACKETS ARE METRIC [mm]	
CAD FILENAME/LAYERS G00239K1_PB_HSTTP_01	
HSTTP PVC THIN WALL HEAT SHRINK	
UNLESS OTHERWISE SPECIFIED, DIMENSIONAL TOLERANCES ARE: (.X) ±0.05 (1.3) (.XXX) ±0.010 (0.25) (.XX) ±0.02 (0.5) ANGLES ± 5°	UNLESS OTHERWISE SPECIFIED, ALL DIMENSIONS ARE GIVEN IN INCHES, THIRD ANGLE PROJECTION.
DRAWN BY LGRAVITT	MAT'L: NONE
DATE 5/12/03	SEE NOTES
CHK'D	DWG SIZE A
DRAWING NO. G00239K1	

REV	DATE	BY	CHK	DESCRIPTION	ECN	R	CJST	SUP
1	2/23/06	JAD		HSTTP75-C WAS HSTTP75-TL	GB0239K1	1		