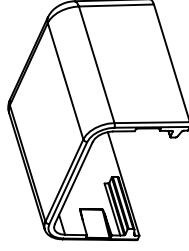
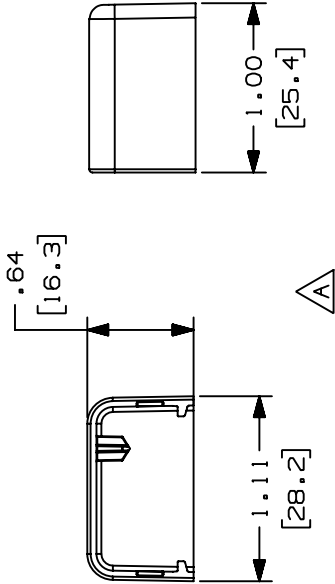


THIS COPY IS PROVIDED ON A RESTRICTED BASIS AND IS NOT TO BE USED IN ANY WAY DETRIMENTAL TO THE INTERESTS OF PANDUIT CORP.

PANDUIT PART NO.	WEIGHT
ECFX5	.66 LB/100 PCS 302 g/100 PCS

- NOTES:
- SEE CURRENT CATALOG FOR ADDITIONAL PART NUMBER SUFFIXES TO INDICATE COLOR AND OR PACKAGE QUANTITY.
 - THIS PRODUCT IS INTENDED TO BE USED WITH PANDUIT TYPE LD5, LDP5 AND LDS5 RACEWAY. NOMINAL WALL THICKNESSES: .055(1.4).
 - NOMINAL WALL THICKNESSES: .055(1.4).
 - DIMENSIONS IN PARENTHESIS ARE IN METRIC.



CAD FILENAME/LAYERS D35541BR_LD_ECFX5_C_02.PRT

PANDUIT

CORP. TINLEY PARK, ILLINOIS

END CAP FITTING COVER
(ECFX5)
CUSTOMER DRAWING

UNLESS OTHERWISE SPECIFIED, DIMENSIONAL TOLERANCES ARE:
(.X) ± (.XXX) ±.015 (1.4)
(.XX) ±.03 (.8) ANGLES ±

UNLESS OTHERWISE SPECIFIED, ALL DIMENSIONS ARE GIVEN IN INCHES, THIRD ANGLE PROJECTION.

SCALE	NONE
DRAWING NO.	35541-19
DWG SIZE	A

MAT'L: ABS/PC

DRAWN BY JBA
DATE 09-19-96
CHECKED BY CEF

REV	DATE	BY	CHK	DESCRIPTION	ECN	CHK	CUST	SUP
2	03-10-04	JHEP	RGRO	B. REMOVED CD5 FROM NOTE 2	35541-19	RGRO	RGRO	
1	05-17-99	DW	H1W	A. NOTE 2 WAS LD2P5 RACEWAY. REVISED GEOMETRY TO SHOW 2D VIEWS.	35541-19	H1W	H1W	
R	09-19-96	JBA	CEF	RELEASED TO PRODUCTION	35541-19	CEF	CEF	