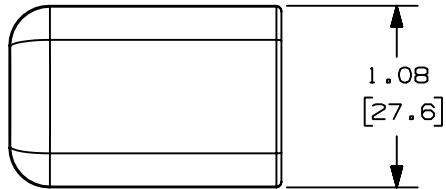


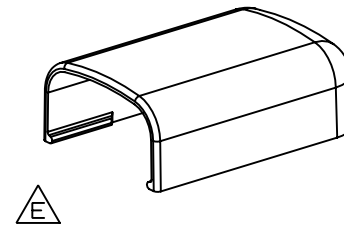
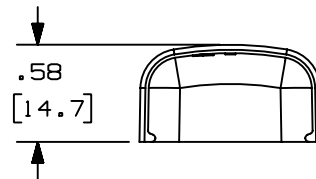
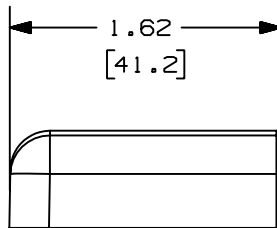
THIS COPY IS PROVIDED ON A RESTRICTED BASIS AND IS NOT TO BE USED IN ANY WAY DETRIMENTAL TO THE INTERESTS OF PANDUIT CORP.

$\triangle B$	PANDUIT P/N	WEIGHT
$\triangle C$	ECF5	0.79 LB/100 PCS. (358g/100 PCS.)



$\triangle D$ NOTES:

1. SEE CURRENT CATALOG FOR ADDITIONAL PART NUMBER SUFFIXES TO INDICATE COLOR AND OR PACKAGE QUANTITY.
2. DIMENSIONS IN PARENTHESIS ARE IN METRIC.



CAD FILENAME/LAYERS D34474BF_DC_ECF5_01.prt

REV	DATE	BY	CHK	DESCRIPTION	ECN	R	CUST	SUP					
6	7-2-02	JHN	RMHI	F. REVISED MATERIAL IN DRAWING TITLE BLOCK.	19159	RGRO	RGRO						
5	8-28-00	MSO	HIW	E. REVISED AND REDRAWN ON CAD.	19159	HIW	HIW						
4	10-3-91	DW	CF	D. REVISED NOTE AND REMOVED COLOR FROM DRAWING.	19159		CF						
3	2-28-91	DW	CF	C. REVISED COLORS: OMIT BG, LI, LG. ADDED INT. WHITE AND INT. GRAY.	19159		WJB						
2	12-2-87	LDB	WJB	B. ADDED PART NUMBERS ECF5E1 AND ECF5L1.	19159		WJB						
1	10-1-84	CEW	HP	A. POLYSTYRENE WAS ABS.	19159		AJC						
R	8-14-84	RS	HP	DRAWING RELEASED	19159								
										UNLESS OTHERWISE SPECIFIED, DIMENSIONAL TOLERANCES ARE: (.X) ± (.XXX) ± (.XX) ± .03 (.8) ANGLES ±		UNLESS OTHERWISE SPECIFIED, ALL DIMENSIONS ARE GIVEN IN INCHES, THIRD ANGLE PROJECTION.	
										DRAWN BY RS		SCALE FULL	
										DATE 8-8-84		DRAWING NO. SS-19159	
										CHK'D HP		DWG SIZE A	
										MAT'L: ABS $\triangle F$			

PANDUIT CORP. TINLEY PARK, ILLINOIS
END CAP FITTING
(ECF5)
CUSTOMER DRAWING

DRAWN BY RS

DATE 8-8-84

CHK'D HP

MAT'L:

ABS $\triangle F$

SCALE FULL

DRAWING NO. SS-19159

DWG SIZE A