

UL LISTED Mini-Com® Inserts

- Compatible with classic and executive faceplate frames
- Front releasable
- Accept Mini-Com® Modules for STP and UTP, fiber optic, and audio/video, which snap in and out for easy moves, adds, and changes



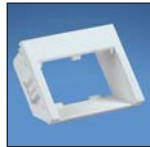
CHS2IW-X



CHS2SIW-X



CHF2IW-X



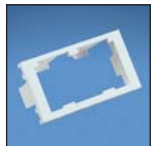
CHSRE2IW-X



CHS1SIW-X



CHB2IW-X



CHF2MIW-X



CHB2MIW-X



CHLS2SIW-X

Part Number	Part Description	Color‡	Std. Pkg. Qty.	Std. Ctn. Qty.
CHS2IW-X	Two module space, 1/2 size, sloped insert accepts two Mini-Com® Modules.	Off White	10	50
CHS2SIW-X	Two module space, 1/2 size, sloped shuttered insert accepts two Mini-Com® Modules. Shutters are spring loaded and rotate out of the way for cable connections. Not suitable for use with any audio/video or fiber connector module that protrudes beyond the face of the insert.	Off White	10	50
CHF2IW-X	Two module space, 1/2 size, flat insert accepts two Mini-Com® Modules.	Off White	10	50
CHSRE2IW-X	Two module space, 1/2 size, 30° sloped recessed insert accepts two Mini-Com® Modules.	Off White	10	50
CHS1SIW-X	One module space, 1/2 size, sloped shuttered insert accepts one Mini-Com® Module. Not suitable for use with any audio/video or fiber connector module that protrudes beyond the face of the insert.	Off White	10	50
CHB2IW-X	1/2 blank insert. Reserves space for future upgrades.	Off White	10	50
CHF2MIW-X	Two module space, 1/3 size, flat insert accepts two Mini-Com® Modules.	Off White	10	50
CHB2MIW-X	1/3 blank insert. Reserves space for future upgrades.	Off White	10	50
CHLS2SIW-X	Sloped module insert with protective shutters and label/label cover accepts up to two Mini-Com® Modules and accommodates up to 1/2 of a single gang bezel. Shutters are spring loaded and rotate out of the way for cable connections. Depth to rear modules: 16.5mm. Not suitable for use with any audio/video or fiber connector module that protrudes beyond the face of the insert.	Off White	10	50

‡For other colors replace suffix IW (Off White) with EI (Electric Ivory), WH (White), IG (International Gray), or BL (Black).

Component Labels for Mini-Com® Inserts



Suggested Label Solutions for TIA/EIA-606-A Compliance				
Insert Part Number	Laser/Ink Jet Desktop Printer Label	TDP43ME Thermal Transfer Desktop Printer Label	PanTher™ LS8E Hand-Held Printer Label	Cougar™ LS9 Hand-Held Printer Label
CHS2	C125X030FJJ	C125X030YPT	C125X030FJC	T031X000FJC-BK
CHS2S				
CHSRE2				
CHS1S	C061X030FJJ	C061X030YPT	C061X030FJC	T031X000FJC-BK
CHF2	C125X030FJJ	C125X030YPT	C125X030FJC	T031X000FJC-BK

For complete labeling solutions and product information, reference charts on pages O.1 – O.22 of SA-NCCB51.