

P2110-EVAL-01



Lifetime Power[®] Energy Harvesting Development Kit for Wireless Sensors

User's Manual

- featuring PIC[®] MCU with eXtreme Low Power (XLP) Technology

Overview

The Lifetime Power[®] Energy Harvesting Development Kit for Wireless Sensors is a complete demonstration and development platform for creating battery-free wireless sensor applications powered by RF energy (radio waves). It is designed and configured for extremely low power operation, and the firmware is pre-installed for out-of-the-box operation.

The wireless sensor boards are powered by the P2110 Powerharvester Receiver, which converts RF energy into DC power. In this kit, the TX91501 transmitter is the source of RF energy at 915MHz, but other sources from 850-950 MHz can also be used for power. The communications from the sensor boards to the access point is 2.4GHz using 802.15.4-compliant radios.

No batteries are needed to power the wireless sensor board. RF energy is converted into DC and stored in a capacitor. When sufficient charge is stored the regulated output of the P2110 provides power to the wireless sensor board until the operation is completed by the node or until the power is turned off at the low-voltage threshold on the capacitor. The included wireless sensors measure temperature, humidity and light, and have an interface for an external sensor.

Contents

The contents of the kit are shown in the image and table below. The kit includes an RF transmitter, RF energy harvesting receiver boards and antennas, wireless sensor boards, a PIC[®] MCU-based development board and radio, and a programming tool.



Qty	Item	Description
1	Power and Data Transmitter (TX91501-3W-ID)	3-watt, 915 MHz transmitter for power and data with integrated 8dBi antenna and two power jacks. Sends a pre-programmed transmitter ID that is received by the P2110 Powerharvester component and is decoded by the MCU on the Wireless Sensor Board
2	P2110 Evaluation Board (P2110-EVB)	Evaluation board (Rev. B) for P2110 Powerharvester Receiver. This board has an SMA connector to connect the antennas and a 10-pin connector for the Wireless Sensor Board
2	Patch antenna	915MHz directional antenna with 120-degree reception pattern (included with the P2110 evaluation board)
2	Dipole antenna	915MHz omni-directional antenna with 360-degree reception (included with the P2110 evaluation board)
2	Wireless Sensor Board (WSN-EVAL-01)	Sensor for Temp/Humidity/Light and an external input. Plugs into P2110 evaluation board, and sends data to the access point (Microchip 16-bit XLP Development Board)
1	Microchip 16-bit XLP Development Board (DM240311)	Development platform featuring Microchip's PIC24F MCU that is pre-programmed to operate as an access point for receiving data from the Wireless Sensor Boards. USB cable included in box.
1	Microchip MRF24J40 PICtail/PICtail Plus Daughter Board (AC164134-1)	2.4GHz, IEEE 802.15.4 radio that plugs into the 16-bit XLP Development Board for receiving data from the Wireless Sensor Boards
1	PICkit™ 3 programmer / debugger (PG164130)	Programming tool for updating code on the Wireless Sensor Boards and the 16-bit XLP Development Board. USB cable included in package.

Set-up and Operation

Installation Overview

The following basis steps are required to operate the kit and are provided as an overview. Detailed installation instructions are provided immediately after this summary.

1. Install HyperTerminal (already installed with Windows XP) or equivalent terminal emulator program.
2. Install the USB Serial Driver for the Microchip 16-bit XLP Development Board.
3. Configure HyperTerminal or equivalent terminal emulator program.
4. Connect antennas and sensor boards to P2110 evaluation board.
5. Turn on the transmitter and point toward receivers.

Note:

The required software for steps 1 and 2 above is available for download from <http://www.powercastco.com/resources/> or the direct links provided in the next section.

Step-by-Step Installation

1. Install a terminal emulator program on your PC.

HyperTerminal is included with Windows XP and earlier versions and no installation is required. Windows Vista and Windows 7 users can download HyperTerminal from the following link <http://www.powercastco.com/zip/HyperTerminal.zip>

The download file is also found on the following page: <http://www.powercastco.com/resources/>

There are only two files in this ZIP package:

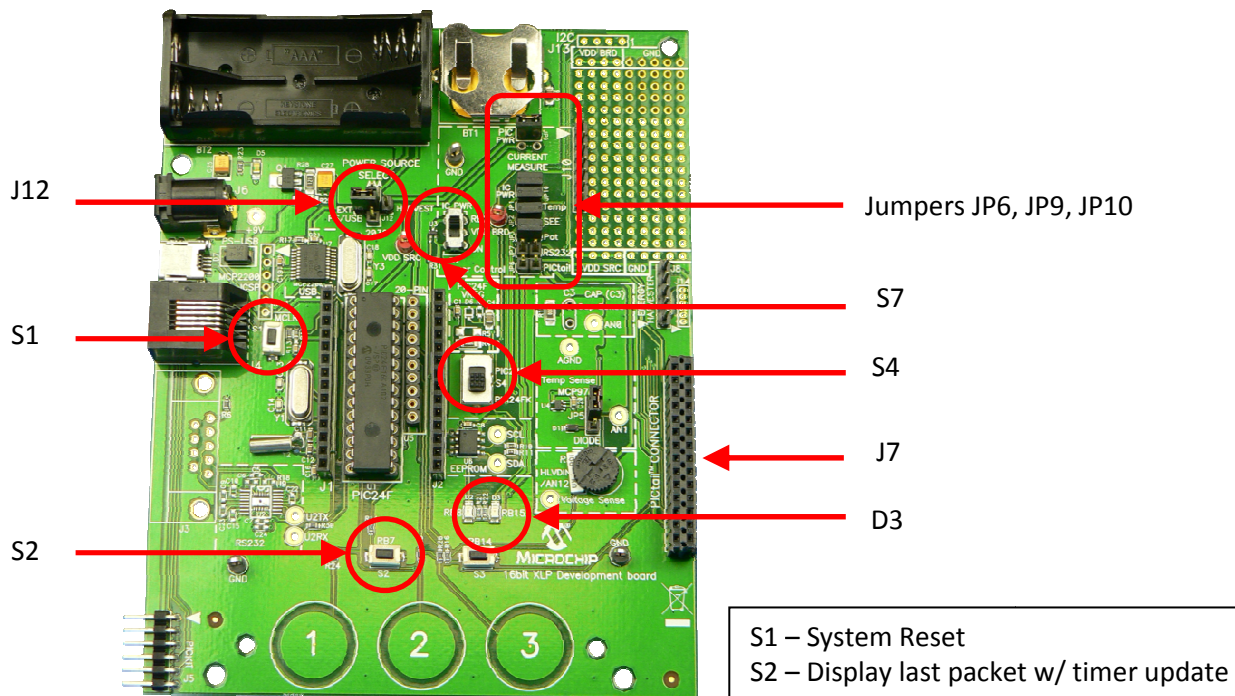
hyperterm.dll
hyperterm.exe

Unzip the files to a location of your choice and click on **hyperterm.exe** when you are ready to operate the program (not yet). Be sure to keep these files in the same directory.

2. Verify the settings on the Microchip 16-bit XLP Development Board as follows:

S4: PIC24FK
S7: ON
J12 Jumper set to EXT PS/USB
JP6 Jumper on
JP9 Jumper on
JP10 Jumper on

Plug the Microchip MRF24J40 daughter board into the PICtail™ Connector, J7, of the XLP board. The daughter board should hang off the side of the XLP board, with the components facing inward/toward the XLP board, as shown in the picture on page 1.



3. Download and install the USB-to-Serial driver file

The following driver file is needed to communicate with the Microchip 16-bit Development Board:
<http://www.powercastco.com/zip/USB-Serial-Driver.zip>

The file is also found on the following page:
<http://www.powercastco.com/resources/>

USB-to-Serial driver file installation

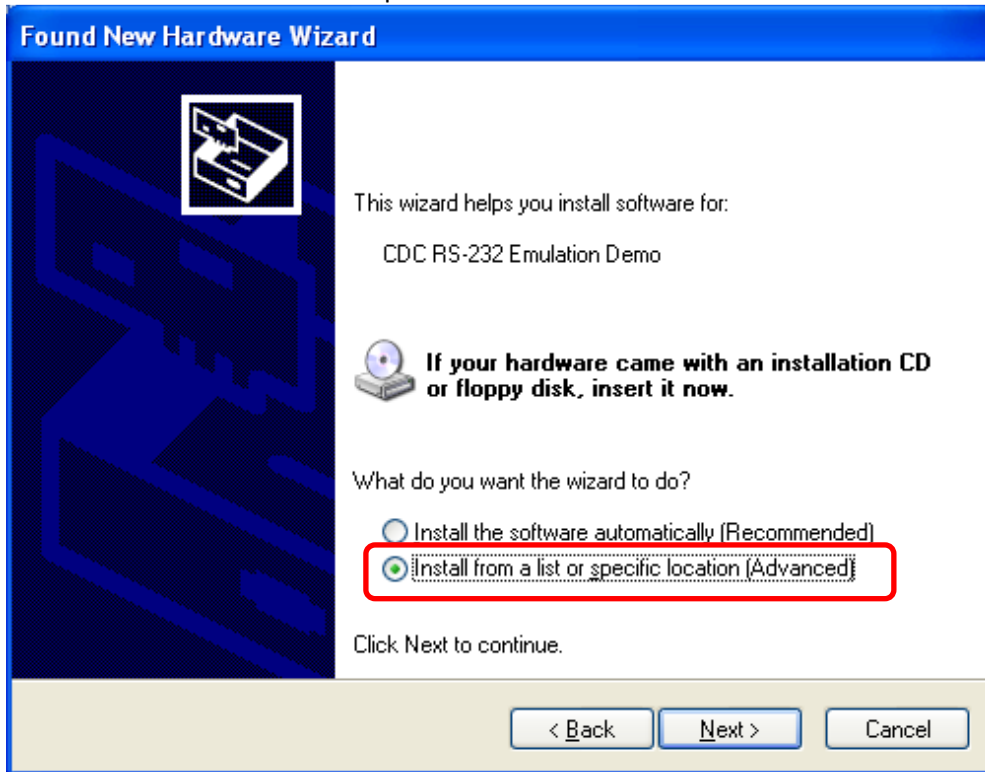
- a. Download the file and unzip to a preferred location.
- b. Connect the Microchip 16-bit Development Board to the PC using the USB cable
- c. **Manually** install the driver as shown below. DO NOT use Windows automatic driver search.

Note – the installation example below is based on Windows XP

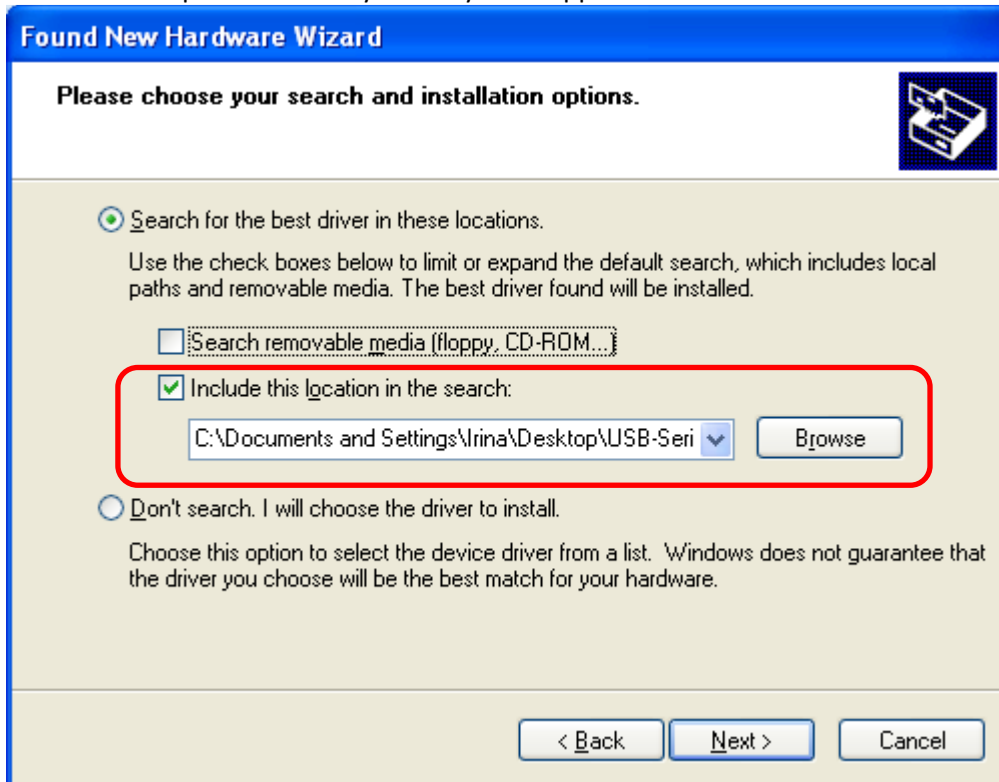
3.1 Connect the USB cable to the Microchip 16-bit XLP Development Board using min-USB connector J9. When the following screen appears select “No, not at this time” and then click “Next”.



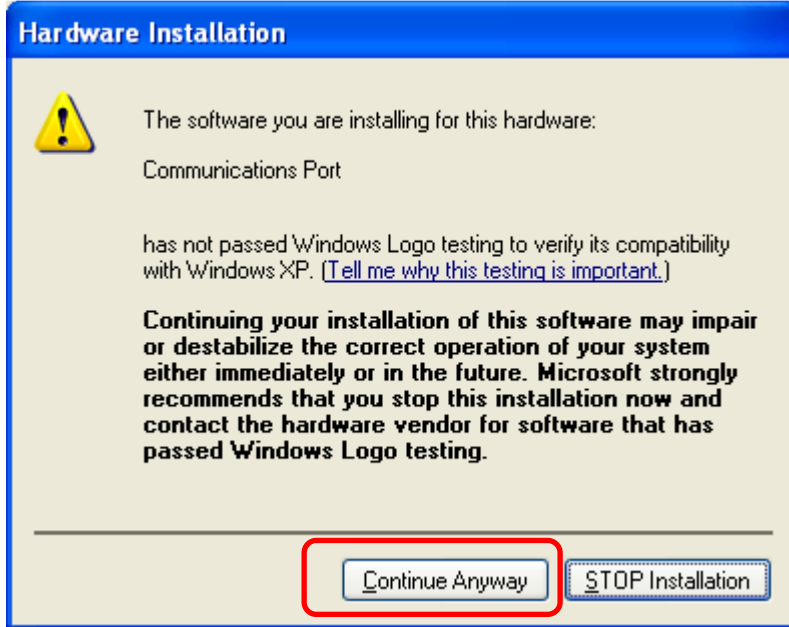
3.2 Select “Install from a list of specific location” and then click “Next” to continue.



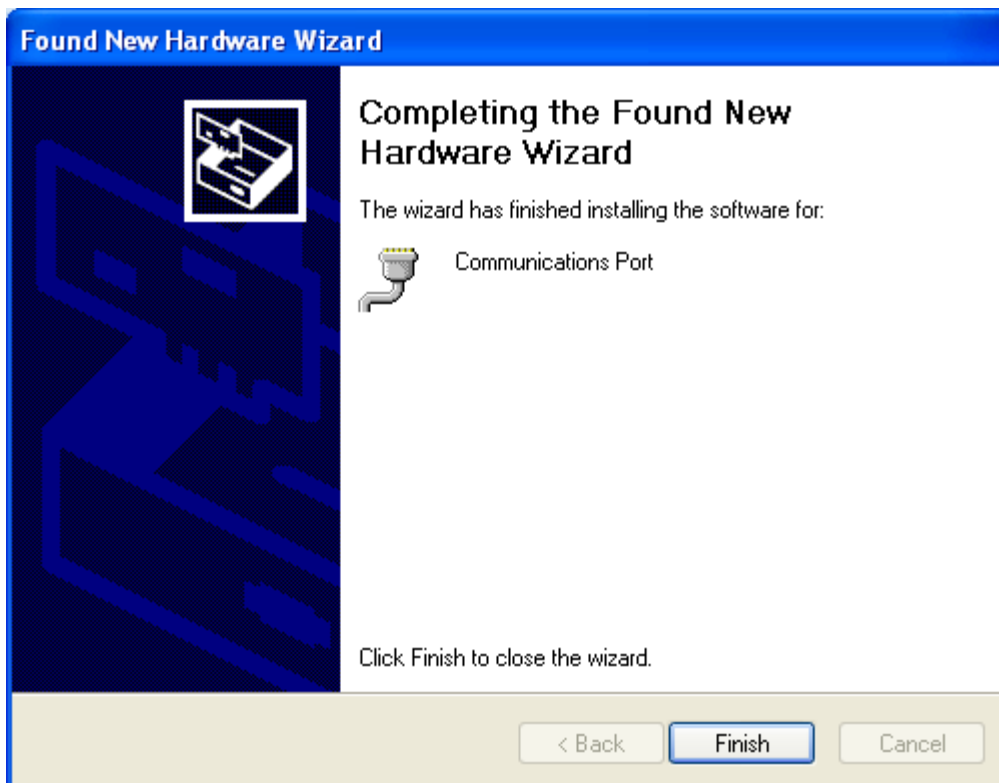
3.3 Select the specific directory where you unzipped the USB-to-Serial driver files and then click “Next”.



3.4 Click “Continue Anyway” to proceed.



3.5 When completed you should see this screen. Click “Finish” to proceed.



4. Configure HyperTerminal to see data on the PC

The data can be displayed through a PC using any terminal emulator program. This manual will show how to configure HyperTerminal, but the following settings are needed with any terminal emulator that is used:

Baud rate: 19200 bps
Data bits: 8 bits
Parity: None
Stop bits: 1 bit
Emulation: ANSI or Auto Detect

Windows XP or Windows 2000

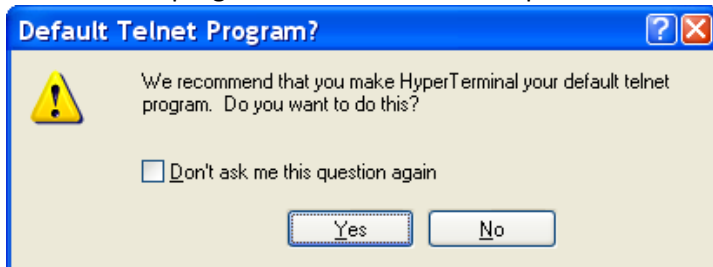
HyperTerminal is provided with Windows XP and earlier versions. To access the program use the following menu options:

Start Menu > All Programs > Accessories > Communications > HyperTerminal

Windows Vista or Windows 7

Go to the directory where HyperTerminal was installed from Step 1 and double click on **hypertrm.exe** to launch the program.

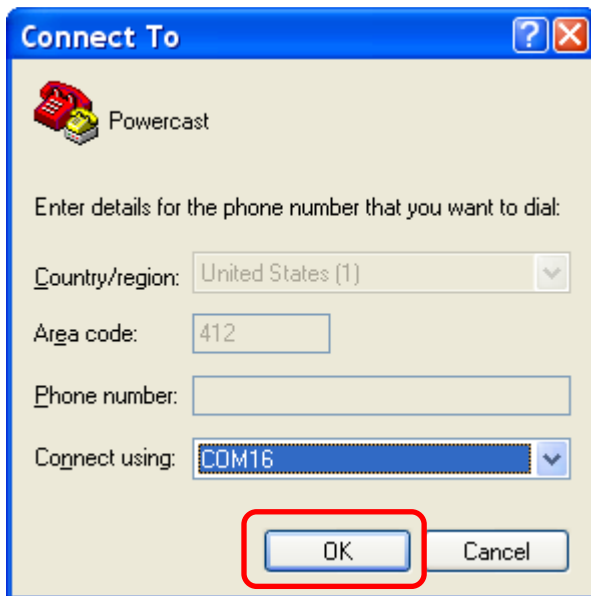
4.1 Upon starting the program the dialog box may ask you if you would like to make HyperTerminal your default telnet program. Select Yes or No to proceed.



4.2 Next, you will be shown the following dialog box in which to enter a name for the connection. You can choose any name, "Powercast" is used in this manual. Enter "Powercast" into the dialog box and select "OK" to continue



4.3 The following dialog box will appear. Select the COM port which is being used for the access point and click "OK". (COM16 is used in this example).

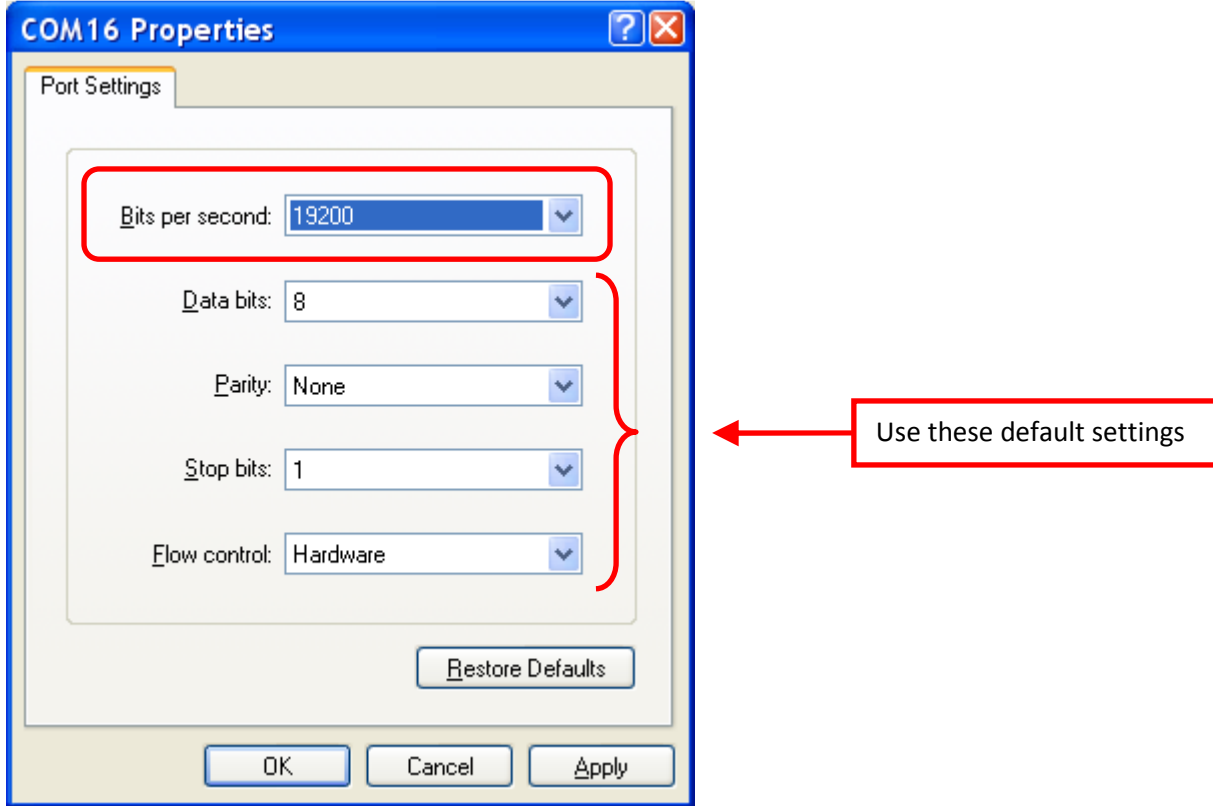


Note:

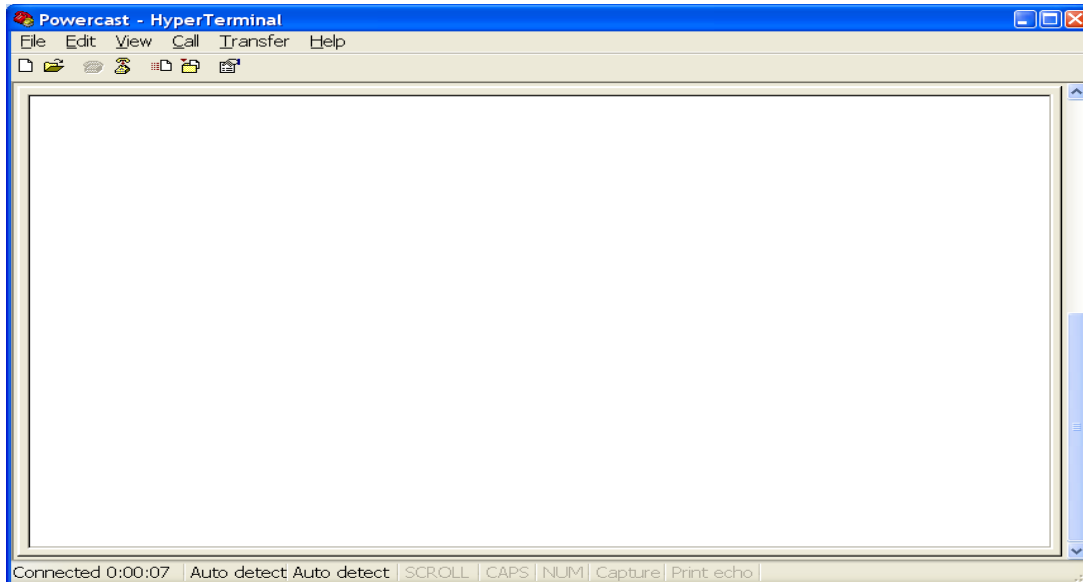
If more than one COM port is shown you may need to use System Properties through Windows Control Panel to determine which is the correct COM port. To access System Properties on your PC (using Windows XP) select the following menu options:

1. Start Menu > Control Panel > System
2. Click on the "Hardware" tab and then "Device Manager"
3. Scroll down until you see "Ports (COM & LPT)" and click the "+" sign to expand the list.

4.4 Set the baud rate (Bits per second) to 19200 (19.2kbps) and click “OK”.



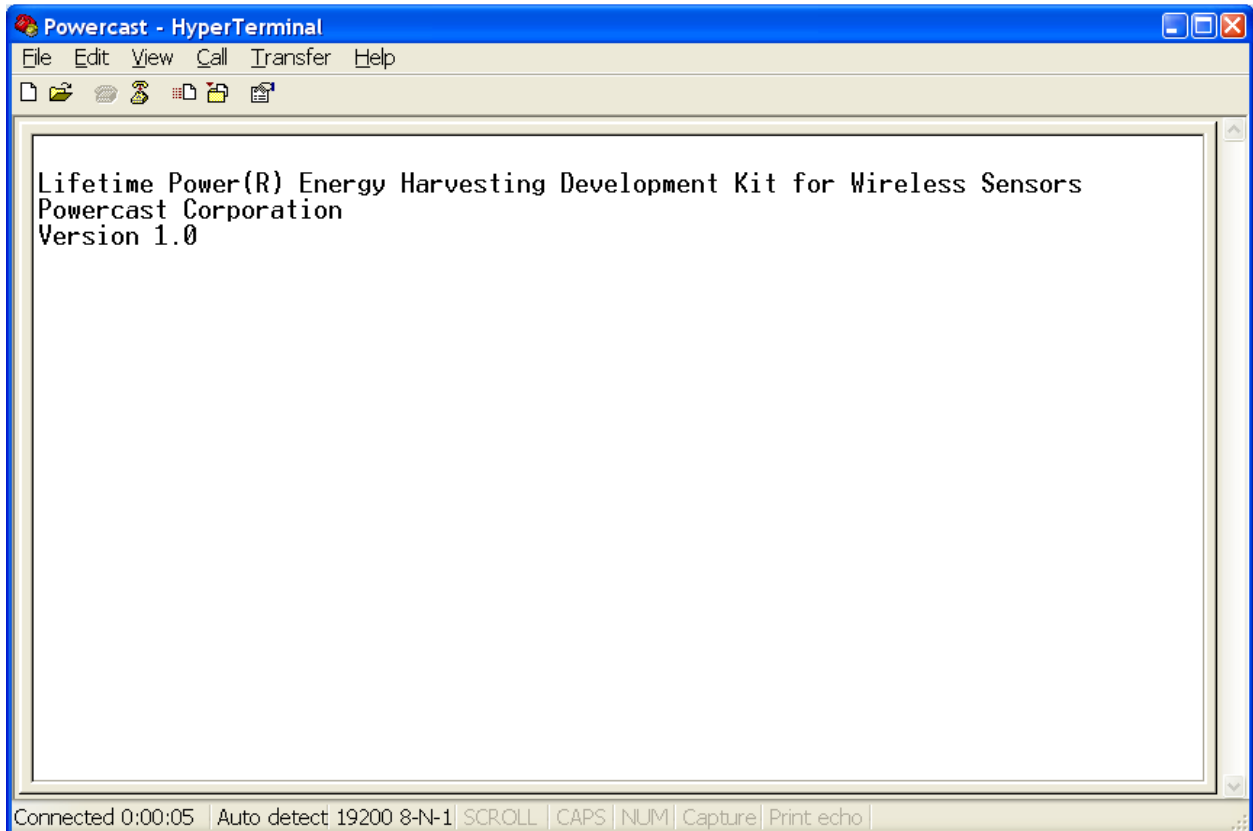
4.5 The following blank screen will appear.



Packets are displayed automatically when the TX91501 transmitter or other RF energy source is providing power to a P2110 evaluation board with the sensor board attached.

4.6 Press switch S1 (see page 3) on the Microchip 16-bit XLP Development Board to reset the system software and validate proper installation. If everything has been installed properly you will see the following message displayed on the screen:

“Lifetime Power(R) Energy Harvesting Development Kit for Wireless Sensors”
“Powercast Corporation”
“Version X.X”



Switch Functions

Switches S1 and S2 on the Microchip 16-bit XLP Development Board function as defined below:

Switch S1

Resets the system software and all data buffers, including time counter and dT counter. Pressing S1 is not required to start receiving packets and displaying sensor data.

Switch S2

Outputs data to the screen from the last packet received with an updated elapsed time and time differential (dT).

5. Configure the P2110 evaluation board

5.1 Attach an antenna to each P2110 evaluation board using SMA connector J1. The line-of-sight range when using the included patch antennas is around 40 feet and around 20 for the dipole antenna.

Note: Operating the evaluation board on a ground plane such as an anti-static protection mat on a lab bench may cause significant signal attenuation.

Note: Optional testing of P2110 Evaluation Board only (also requires Step 6).

To test the proper function of the P2110 Evaluation Board use the following settings or see the instructions for the P2110-EVB at <http://www.powercastco.com/PDF/P2110-EVB.pdf>

J1: Antenna connected

JP1: C3 connected

S2: LED

The LED will blink when sufficient power is available. The blinking rate is faster when closer to the transmitter and slower when further from the transmitter.

5.2 Verify the configuration of the P2110 evaluation boards as follows:

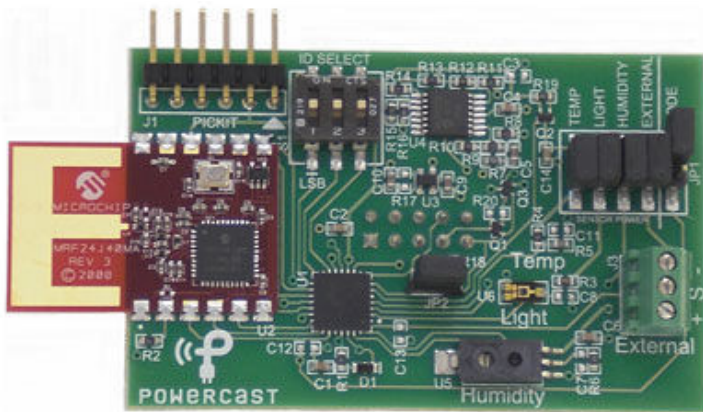
JP1: C5 connected (can also use C4 with a properly sized user-installed capacitor)

S2: doesn't matter

S3: doesn't matter

S4: doesn't matter

5.3 Attach the wireless sensor boards to the P2110 evaluation boards using the keyed connector and set the sensor board node IDs (values of 0-7) as desired using the 3 position DIP switch (S1). Set the jumpers on JP1 as appropriate for TEMP, LIGHT, HUMIDITY, EXTERNAL, and MODE. They should all be connected for the default mode of operation.



WSN-EVAL-01 wireless sensor board

Note: JP2 can be used to measure current being used by the sensor board. It should be connected for normal operation. This is explained in greater detail on page 14.

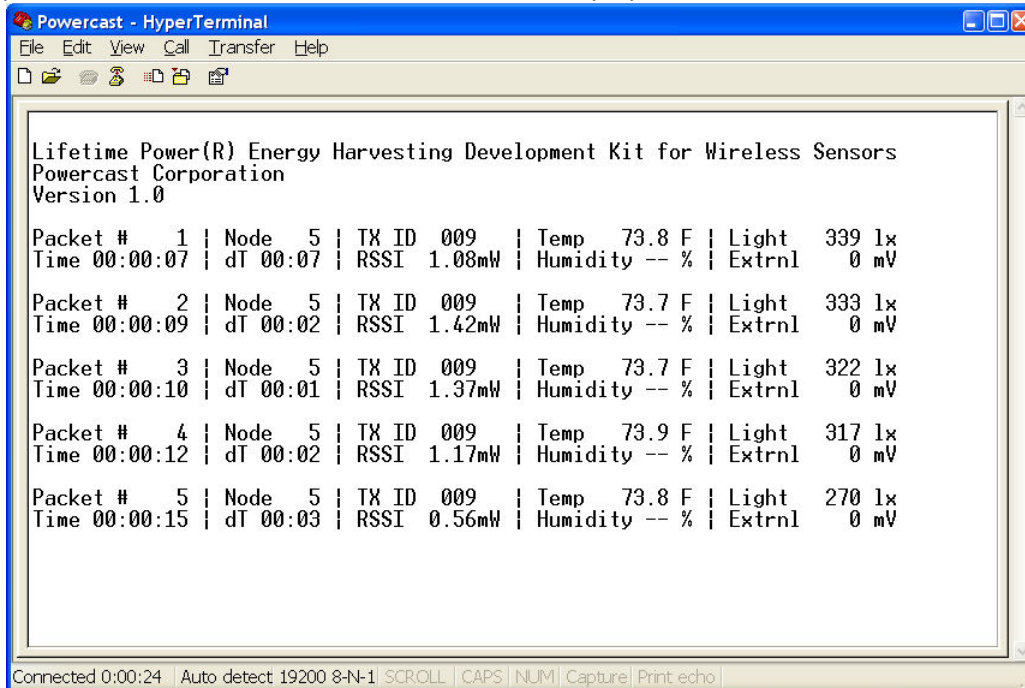
6. Plug in the Transmitter

Plug in the TX91501 Powercaster Transmitter and point it toward the P2110 evaluation boards with the wireless sensor nodes. The line-of-sight range when using the included patch antennas is around 40-45 feet, and less for the dipole antenna.

Note – As a precaution, do not operate the transmitter within 12 inches of the evaluation board when the patch antennas are attached. Please see the transmitter user's manual for operating details.

7. Verify Packet Reception

The sensor modules will transmit data when Vout of the P2110 is activated. Confirm packet reception on the Microchip 16-bit Development Board by watching the LED D3. This LED will flash every time a packet is received. The received data will also display on the PC as shown below.

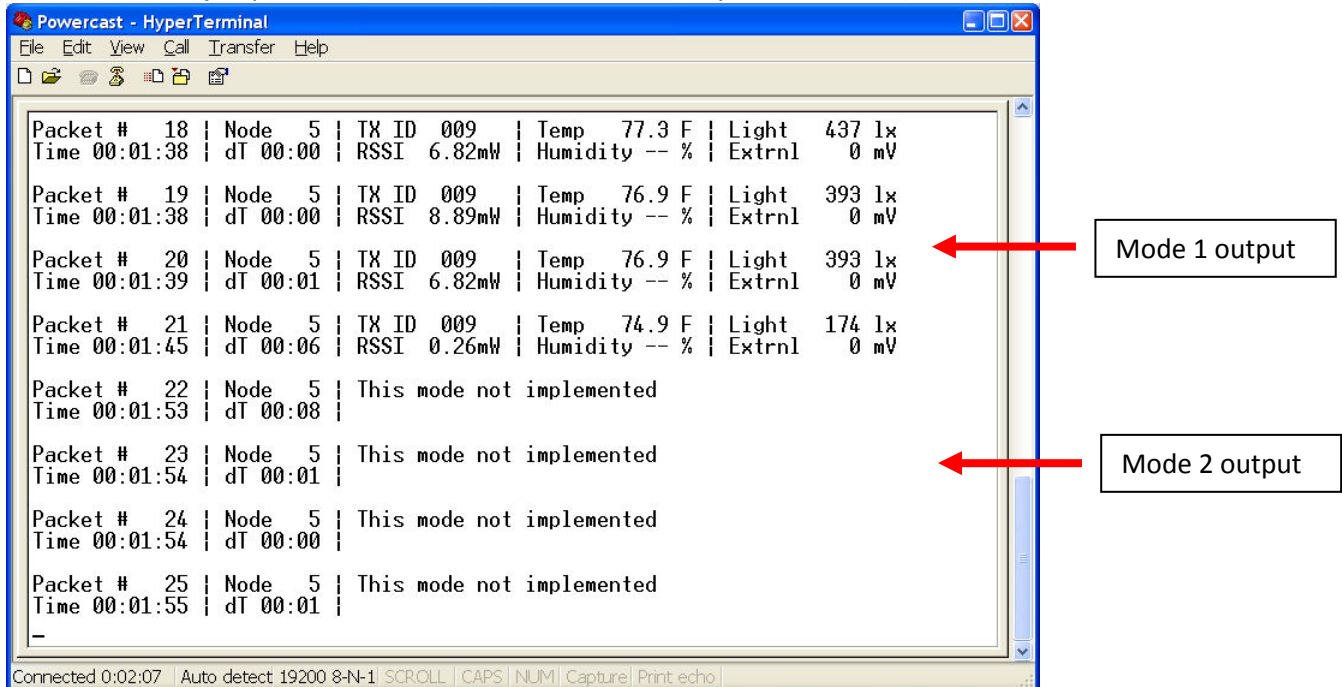


```
Powercast - HyperTerminal
File Edit View Call Transfer Help
LifETIME Power(R) Energy Harvesting Development Kit for Wireless Sensors
Powercast Corporation
Version 1.0
Packet # 1 | Node 5 | TX ID 009 | Temp 73.8 F | Light 339 lx
Time 00:00:07 | dT 00:07 | RSSI 1.08mW | Humidity -- % | Extrnl 0 mV
Packet # 2 | Node 5 | TX ID 009 | Temp 73.7 F | Light 333 lx
Time 00:00:09 | dT 00:02 | RSSI 1.42mW | Humidity -- % | Extrnl 0 mV
Packet # 3 | Node 5 | TX ID 009 | Temp 73.7 F | Light 322 lx
Time 00:00:10 | dT 00:01 | RSSI 1.37mW | Humidity -- % | Extrnl 0 mV
Packet # 4 | Node 5 | TX ID 009 | Temp 73.9 F | Light 317 lx
Time 00:00:12 | dT 00:02 | RSSI 1.17mW | Humidity -- % | Extrnl 0 mV
Packet # 5 | Node 5 | TX ID 009 | Temp 73.8 F | Light 270 lx
Time 00:00:15 | dT 00:03 | RSSI 0.56mW | Humidity -- % | Extrnl 0 mV
Connected 0:00:24 | Auto detect 19200 8-N-1 | SCROLL | CAPS | NUM | Capture | Print echo
```

The screen output for the two different modes of operation is shown below.

Mode 1 – MODE jumper is connected (default)

Mode 2 – MODE jumper is disconnected (future functionality or user’s code)



```
Powercast - HyperTerminal
File Edit View Call Transfer Help
Packet # 18 | Node 5 | TX ID 009 | Temp 77.3 F | Light 437 lx
Time 00:01:38 | dT 00:00 | RSSI 6.82mW | Humidity -- % | Extrnl 0 mV
Packet # 19 | Node 5 | TX ID 009 | Temp 76.9 F | Light 393 lx
Time 00:01:38 | dT 00:00 | RSSI 8.89mW | Humidity -- % | Extrnl 0 mV
Packet # 20 | Node 5 | TX ID 009 | Temp 76.9 F | Light 393 lx
Time 00:01:39 | dT 00:01 | RSSI 6.82mW | Humidity -- % | Extrnl 0 mV
Packet # 21 | Node 5 | TX ID 009 | Temp 74.9 F | Light 174 lx
Time 00:01:45 | dT 00:06 | RSSI 0.26mW | Humidity -- % | Extrnl 0 mV
Packet # 22 | Node 5 | This mode not implemented
Time 00:01:53 | dT 00:08 |
Packet # 23 | Node 5 | This mode not implemented
Time 00:01:54 | dT 00:01 |
Packet # 24 | Node 5 | This mode not implemented
Time 00:01:54 | dT 00:00 |
Packet # 25 | Node 5 | This mode not implemented
Time 00:01:55 | dT 00:01 |
-
Connected 0:02:07 | Auto detect 19200 8-N-1 | SCROLL | CAPS | NUM | Capture | Print echo
```

Mode 1 output

Mode 2 output

Data Output Ranges

The following table explains each item displayed on the screen and the valid range of data.

Parameter	Description	Range
Packet#	Packet counter (reset when S1 is pressed)	1 to 99999 – number is incremented with each packet received
Time	Relative time counter (reset when S1 is pressed)	00:00:00 (HH:MM:SS) up to 99:59:59
dT	Time differential between received packets. A separate counter is used for each node	00:00 (MM:SS) up to 99:59
TX ID	The ID number broadcasted by the TX91501 transmitter (factory programmed).	1 – 254 “---“ otherwise (error)
Node	Wireless Sensor Board identifier*	0 – 7 (configured by DIP switches)
RSSI	Received Signal Strength Indicator – the received signal strength from an RF power source	0.04 – 50 mW “---“ otherwise
Temp	Temperature (Fahrenheit)	25 - 125°F “---“ otherwise
Humidity	Relative Humidity	15 – 85 % rh “---“ otherwise
Light	Ambient Illuminance (Lux)	10 – 99999 lux “---“ otherwise
Extrnl	External sensor reading	0 – 3000mV

* If both wireless sensor boards are set to the same ID then the Time and dT values will be based on packets received from either node. It is recommended that each wireless sensor board is assigned a unique ID.

Wireless Sensor Board Voltage

The wireless sensor boards are regulated to operate at 3V. This voltage can't be adjusted.

Transmitter Identification (TXID)

The TX91501 sends a unique identifier code along with the power that it outputs. This code can be used for wireless sensor location tracking if devices are mobile. The wireless sensor board contains a circuit for decoding this ID. If the wireless sensor board for some reason can't read the ID, or there is no ID, it sends an error code, and “---“ is displayed on the terminal.

Receiver Signal Strength Indicator (RSSI)

RSSI shows the actual power level that is being received at the antenna. This number is accurate from 0.04mW to 50mW. If the value is outside of the range, “---“ is displayed, denoting an RSSI read error. Movement and reflections from various objects will affect the RSSI reading.

Temperature Sensor

A Murata NCP18XH103F03RB thermistor is used to measure temperature in the range of 25°F to 125°F. A reading outside this range will constitute an error and “---“ is displayed. Also, if power is removed from this sensor by removing the TEMP jumper on JP1, “---“ is displayed.

Humidity Sensor

A Honeywell HIH-5030 humidity sensor is used to measure humidity in the range of 15% to 85%, with 3% accuracy. A reading outside this range will constitute an error and “---” is displayed. Also, if power is removed from this sensor by removing the HUMIDITY jumper on JP1, “---” is displayed.

Light Sensor

A Vishay TEMA6000X01 ambient light sensor is used to measure illuminance in the range of 10 lux to 99999 lux. A reading outside this range will constitute an error and “---” is displayed. Also, if power is removed from this sensor by removing the LIGHT jumper on JP1, “---” is displayed.

External Sensor Port

The wireless sensor board has a terminal block (J3) for using external sensors. This port can supply power to an external sensor, but the more power that the sensor uses, the longer the time period between packets transmitted.

1. Connect the sensor wires to J3 as follows: (+) power, (S) sensor output, (-) ground.
2. Enable reading of the sensor port by connecting the EXTERNAL jumper pins on JP1.

WARNING: this port can only supply 3V to external sensors; do not apply more than 3V to EXTERNAL port, as this will cause damage to the Wireless Sensor Board.

Current Measuring

JP2 is provided to allow for current usage measurements of the Wireless Sensor Board. The running time of the board is too short (approx. 10ms) to allow for average current monitoring using a digital multi-meter. An oscilloscope is required to witness the current usage. To measure current using a current probe, remove JP2 and connect a test lead with hooks on either side from one pin to the other. Attach the current probe to the test lead. If a current probe is not available, R18 is provided as a current sensing resistor. R18 is a 10Ω resistor in parallel with JP2. With JP2 disconnected, the voltage across R18 can be witnessed on the oscilloscope by connecting a voltage probe across JP2. The current can then be calculated.

Software

Firmware source code

The source code for the Wireless Sensor Board and Access Point (Microchip XLP 16-bit Development Board) is available for download from the Powercast website

<http://www.powercastco.com/resources/>

Software for Microchip's MiWi™ protocol is included as part of Powercast's code and is subject to accepting Microchip's MiWi™ Software License Agreement before download.

All software pre-loaded in the kit components or available for download is subject to Powercast's Limited Warranty for Development Systems.

Modifying the firmware on the Wireless Sensor Boards or Access Point

The software on the Wireless Sensor Boards and the Access Point can be modified using Microchip's free MPLAB® Integrated Development Environment (IDE). Programming is done using the C programming language.

Download MPLAB IDE from Microchip Technology Inc.

Use the link below and follow Microchip's instructions for installation and operation.

<http://www.microchip.com/mplab>

PICKit 3 Programmer/Debugger

The PICKit 3 programming tool is included to re-program the wireless sensors boards and the access point.

Wireless sensor board: use header J1, enable "Power target circuit from PICKit 3" checkbox (found under **Programmer** menu → **Settings...** → **Power** tab)

16-bit XLP board: use header J5, disable "Power target circuit from PICKit 3" checkbox

HyperTerminal

HyperTerminal is available for download at the following link:

<http://www.powercastco.com/zip/HyperTerminal.zip>

USB-to-Serial Driver

The USB-to-Serial driver for the Microchip 16-bit XLD Development Board is available at the following link:

<http://www.powercastco.com/zip/USB-Serial-Driver.zip>

Documentation

Powercast

P2110-EVAL-01 Overview

<http://www.powercastco.com/PDF/P2110-EVAL-01-overview.pdf>

P2110-EVAL-01 User's Manual (this document)

<http://www.powercastco.com/PDF/P2110-EVAL-01-manual.pdf>

P2110 Powerharvester Receiver – datasheet

<http://www.powercastco.com/PDF/P2110-datasheet.pdf>

P2110 Evaluation Board – instructions

<http://www.powercastco.com/PDF/P2110-EVB.pdf>

TX91501 Powercaster Transmitter – user's manual

<http://www.powercastco.com/PDF/TX91501-manual.pdf>

All documentation and software can be obtained through the following page:

<http://www.powercastco.com/resources/>

Microchip Technology

nanoWatt XLP Technology – eXtreme Low Power PIC® Microcontrollers

<http://www.microchip.com/XLP>

XLP 16-bit Development Board – for low power PIC® MCU prototyping

<http://www.microchip.com/xlp16bitboard>

Wireless Design Center – Complete hardware & software solutions including sub-GHz, 2.4GHz, & WiFi

<http://www.microchip.com/rf>

MPLAB IDE

<http://www.microchip.com/mplab>

The Microchip name and logo, PIC, and MPLAB are registered trademarks of Microchip Technology Incorporated in the U.S.A and other countries. MiWi, and PICKit are trademarks of Microchip Technology Inc. All other trademarks mentioned herein are the property of their respective companies.